



SPEARS
SCHOOL OF BUSINESS

Oklahoma Economic Outlook 2016

Dan Rickman

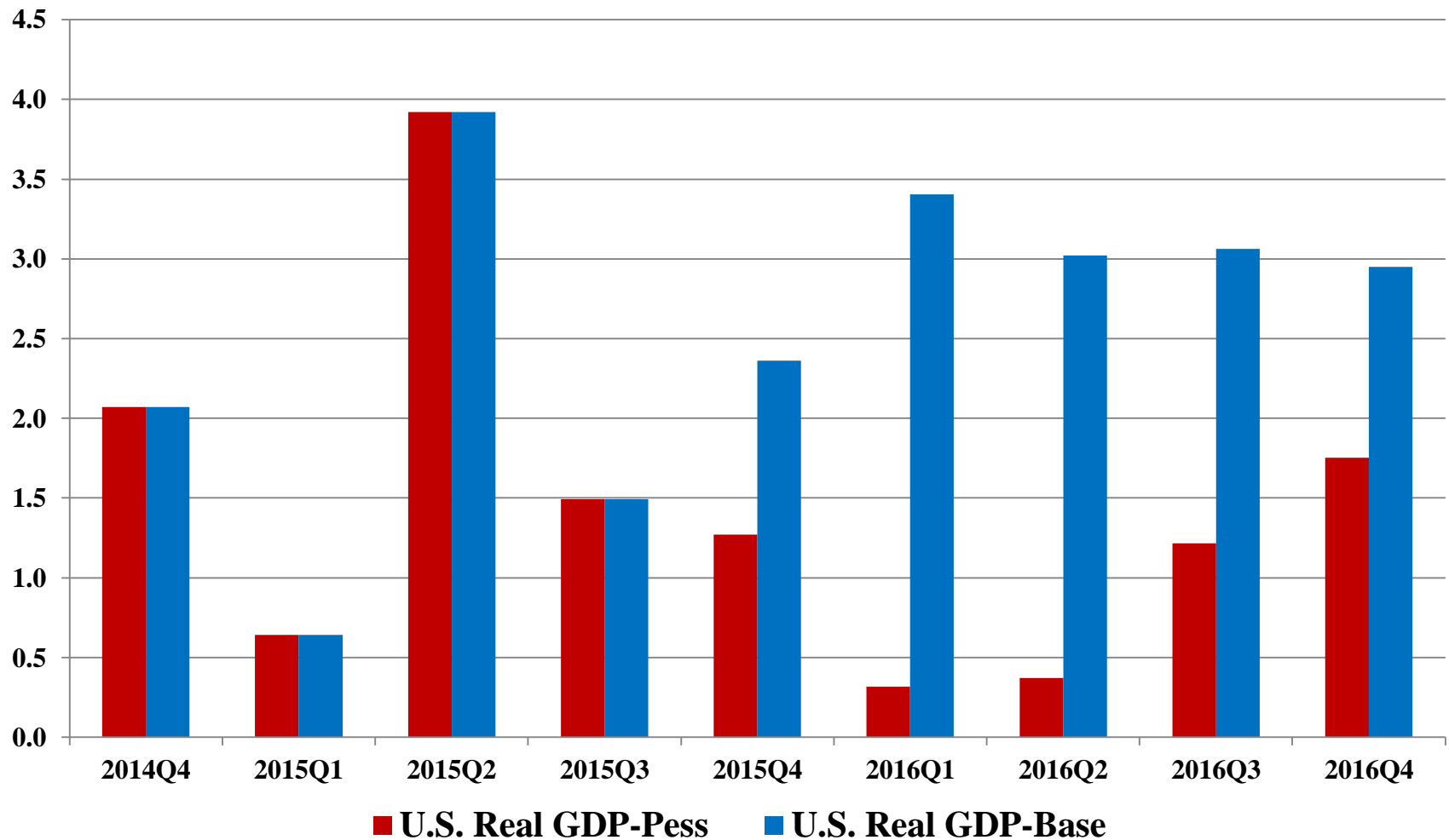
Regents Professor of Economics and
Oklahoma Gas and Electric Services
Chair in Regional Economic Analysis
Oklahoma State University

<http://economy.okstate.edu/>

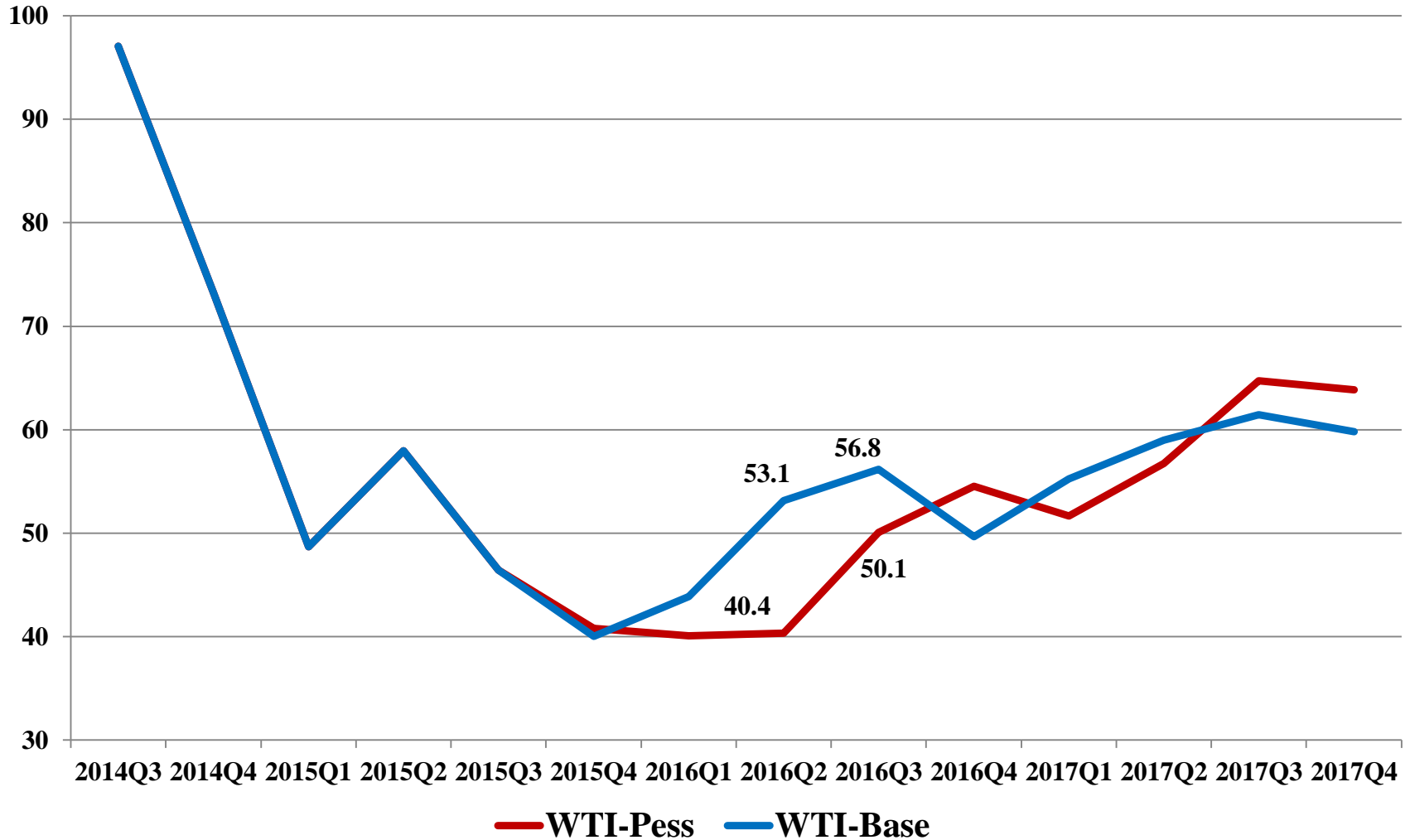


Spears School
OF BUSINESS
Center for Applied
Economic Research

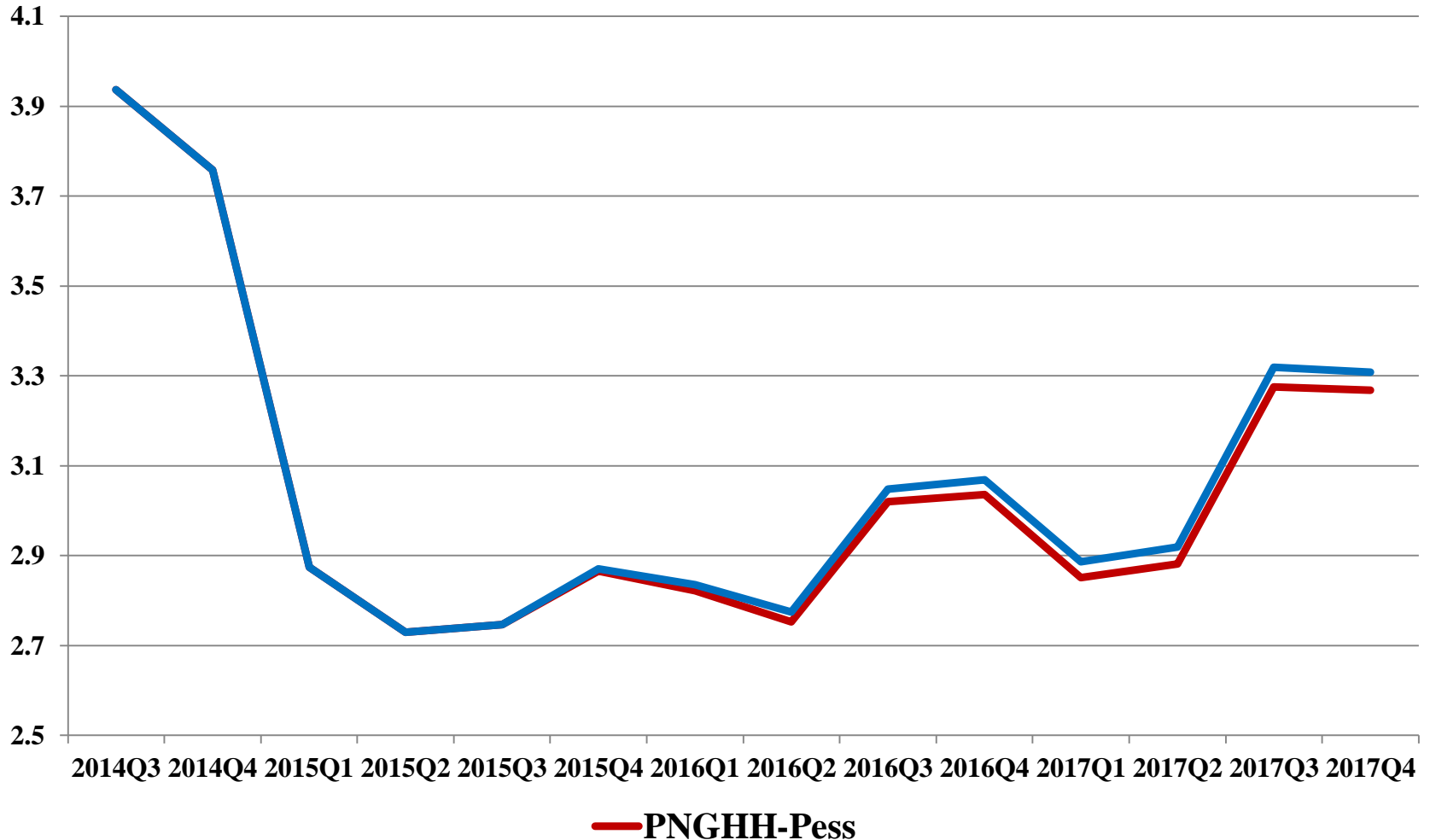
U.S. Real Gross Domestic Product Growth (%): IHS Global Insight Forecast



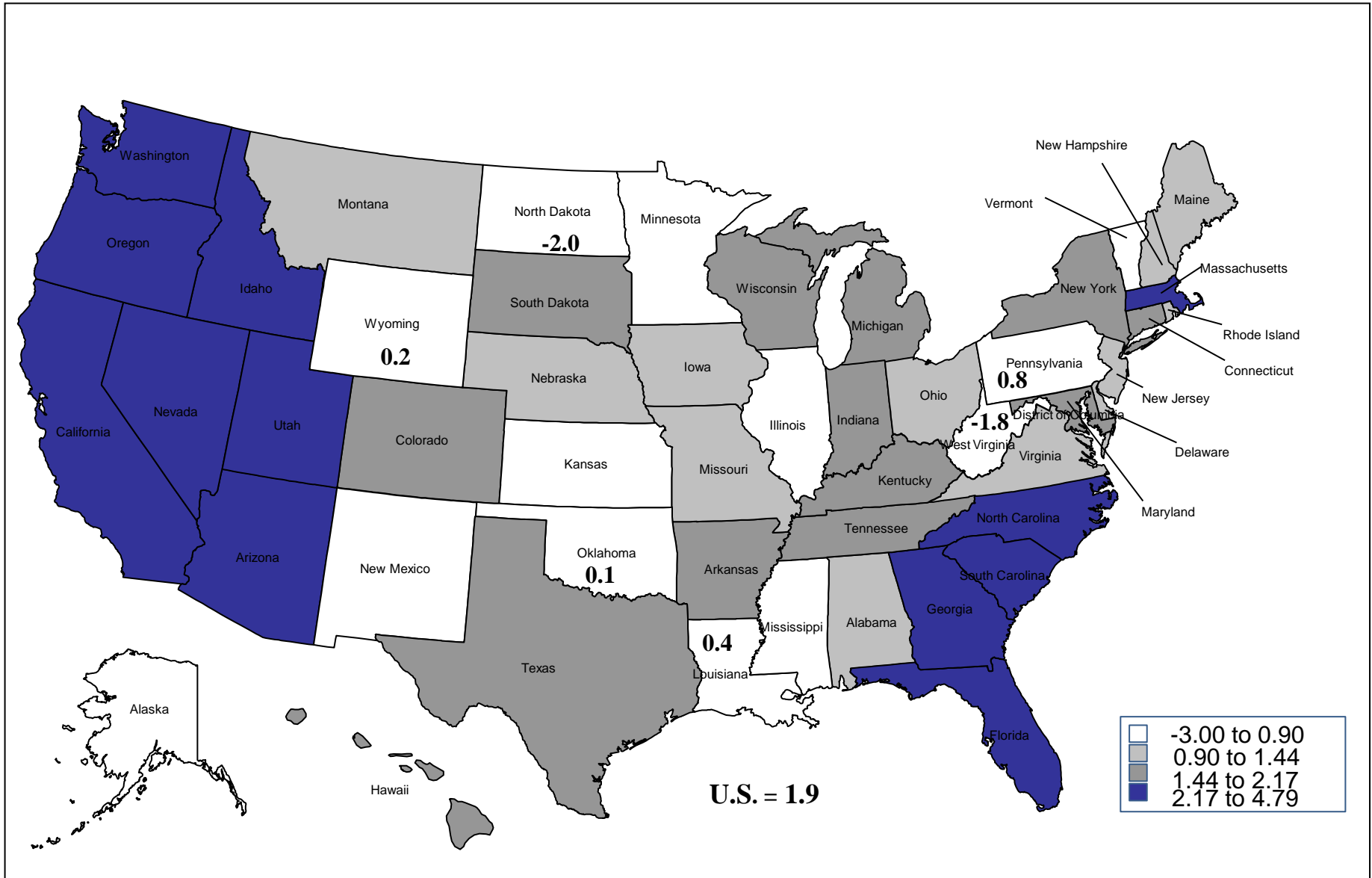
Oil Prices (IHS Global Insight, Inc.): West Texas Intermediate Oil (\$/bbl)



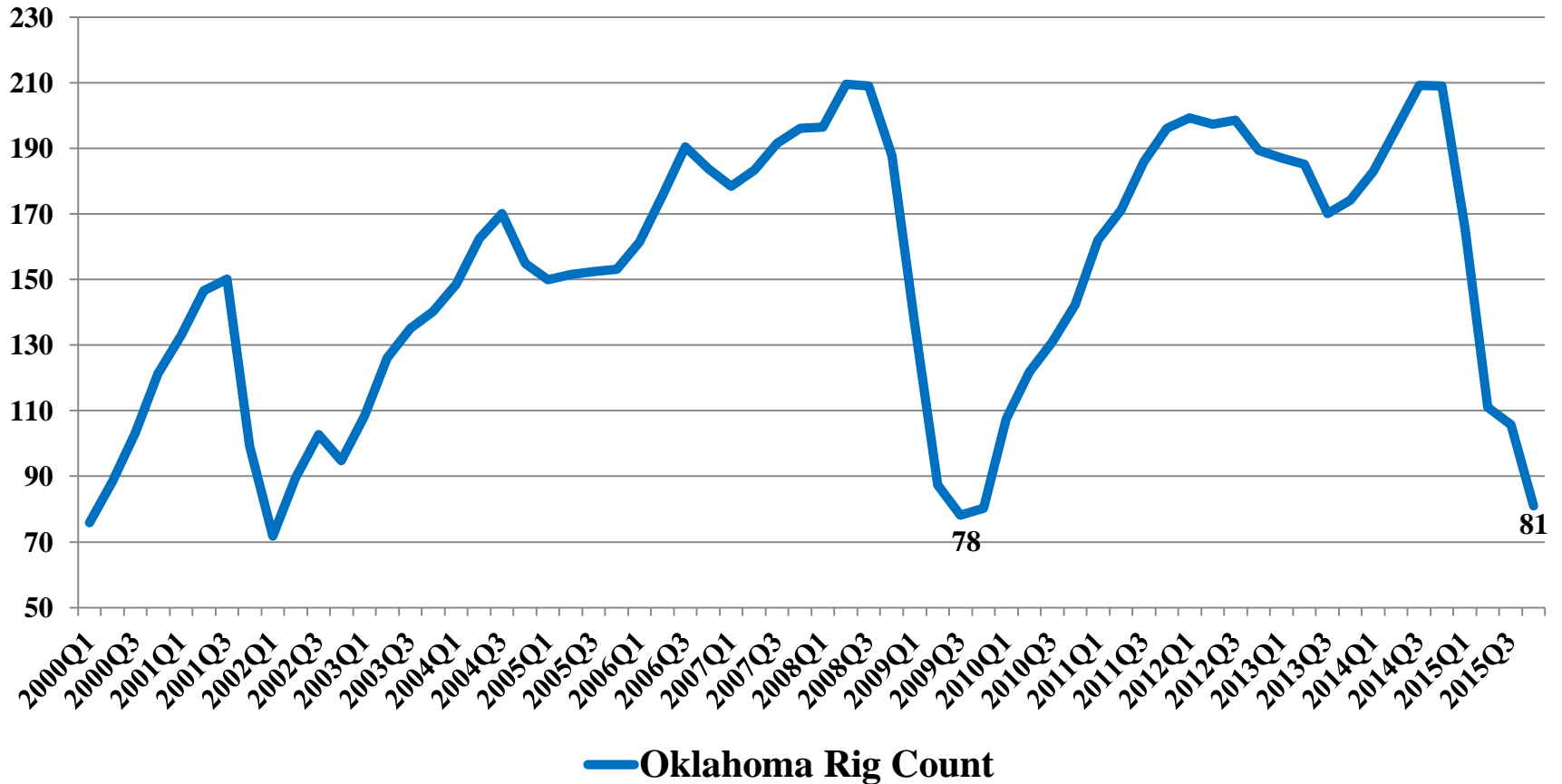
Natural Gas Prices (IHS Global Insight, Inc.): Henry Hub Natural Gas (\$/mmBtu)



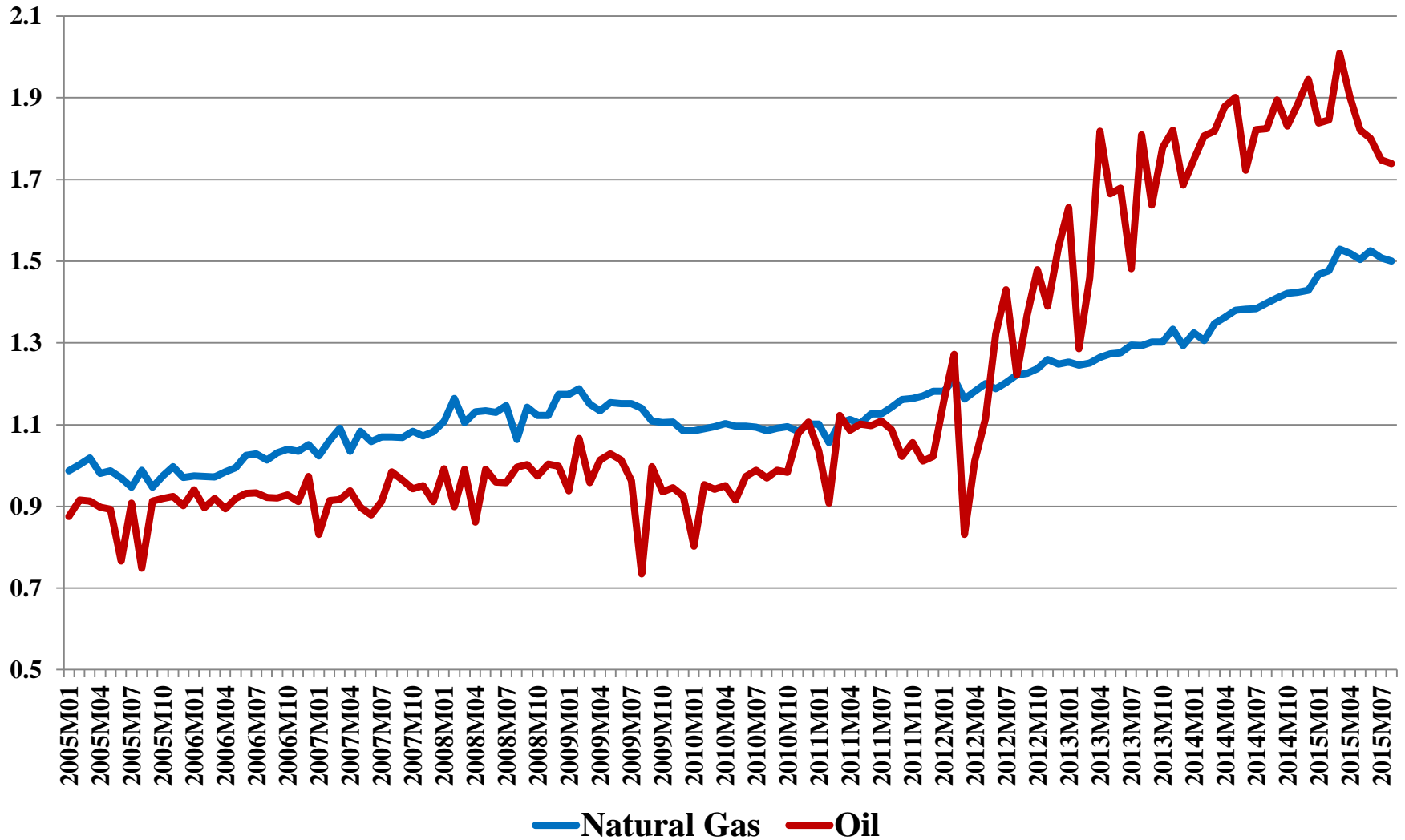
October 2014-2015 BLS Nonfarm Employment Growth Rates (%)



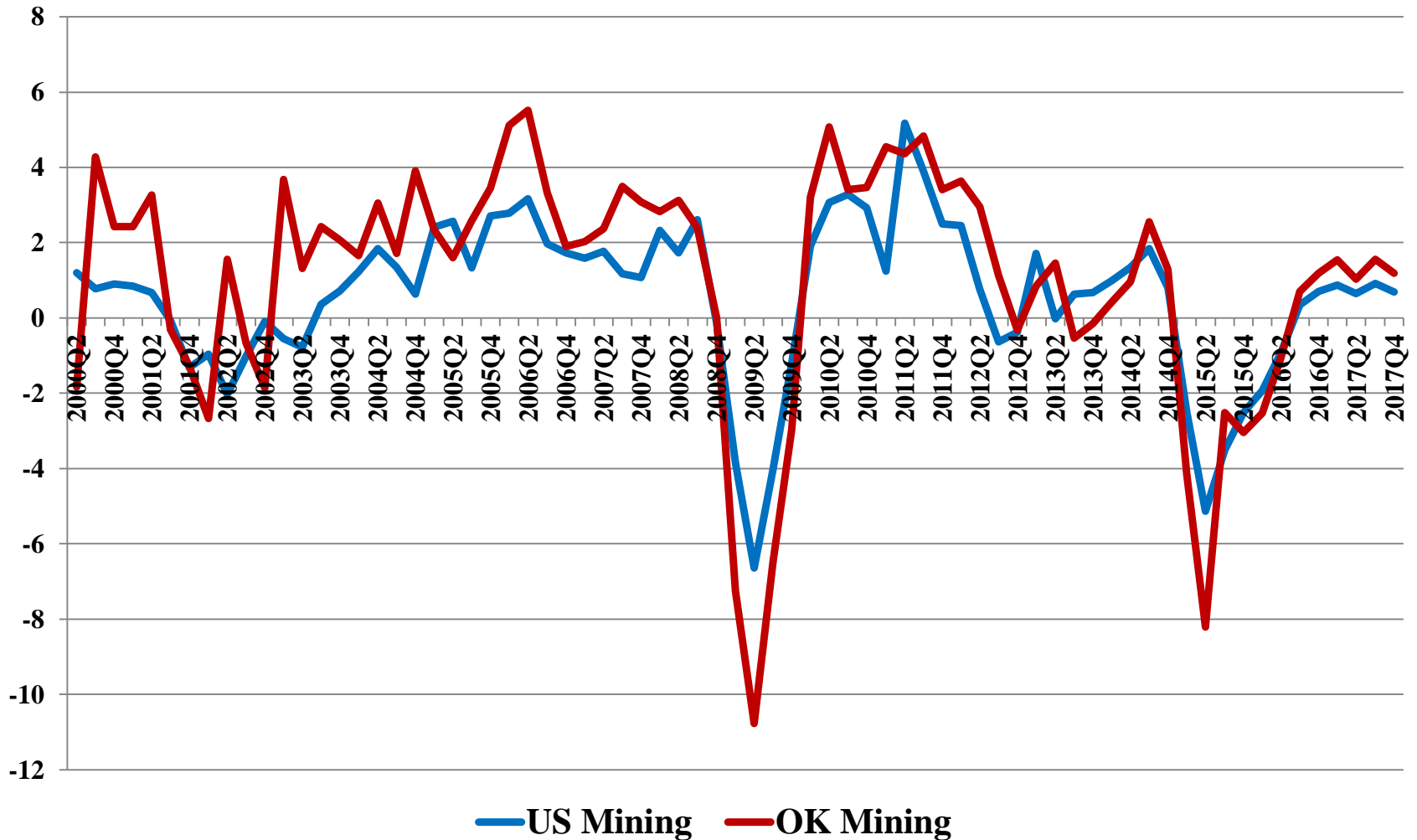
Oklahoma Rotary Rig Count (Baker Hughes)



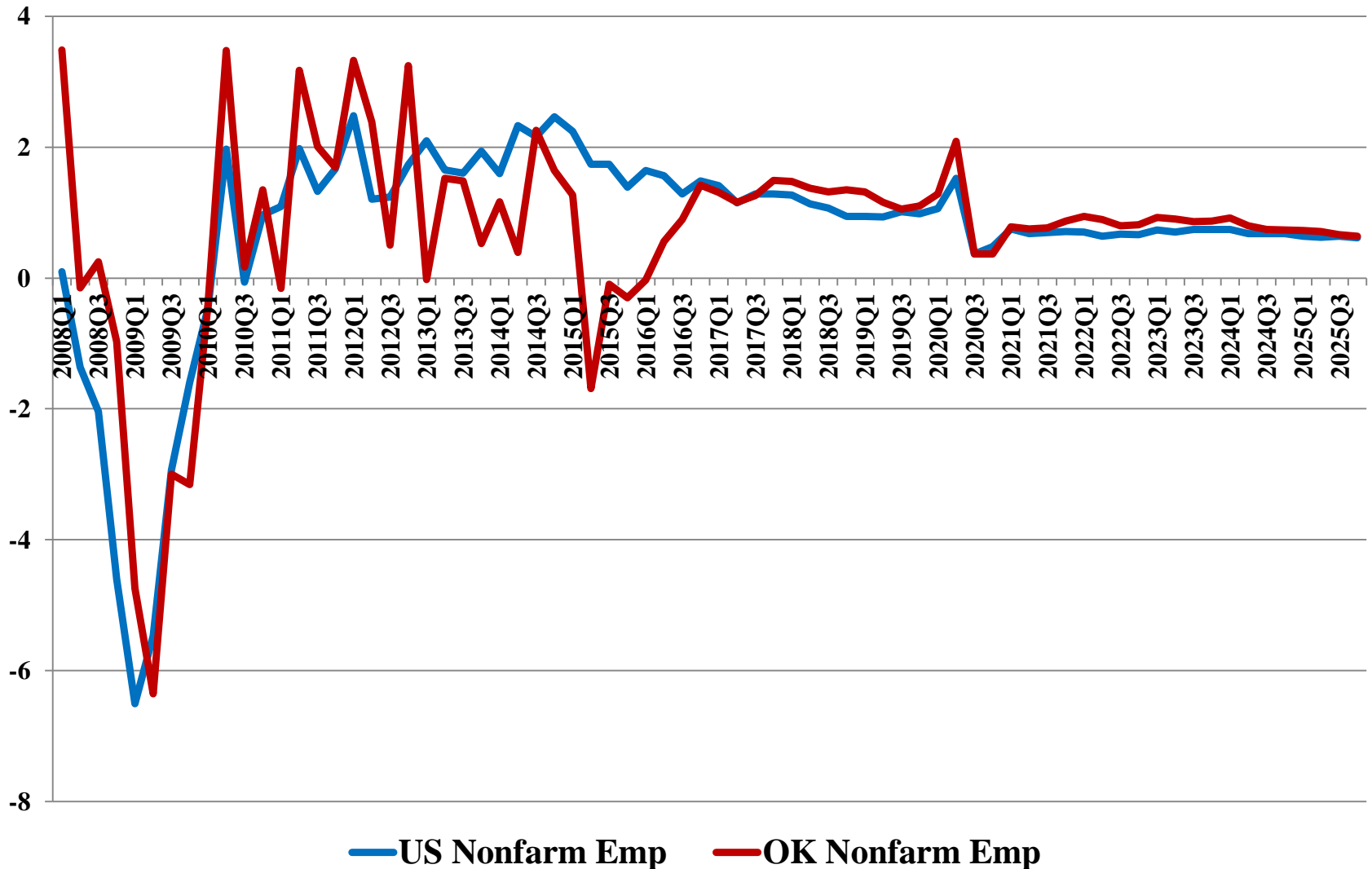
Oklahoma Energy Production: Deseasonalized (2000:1=1)



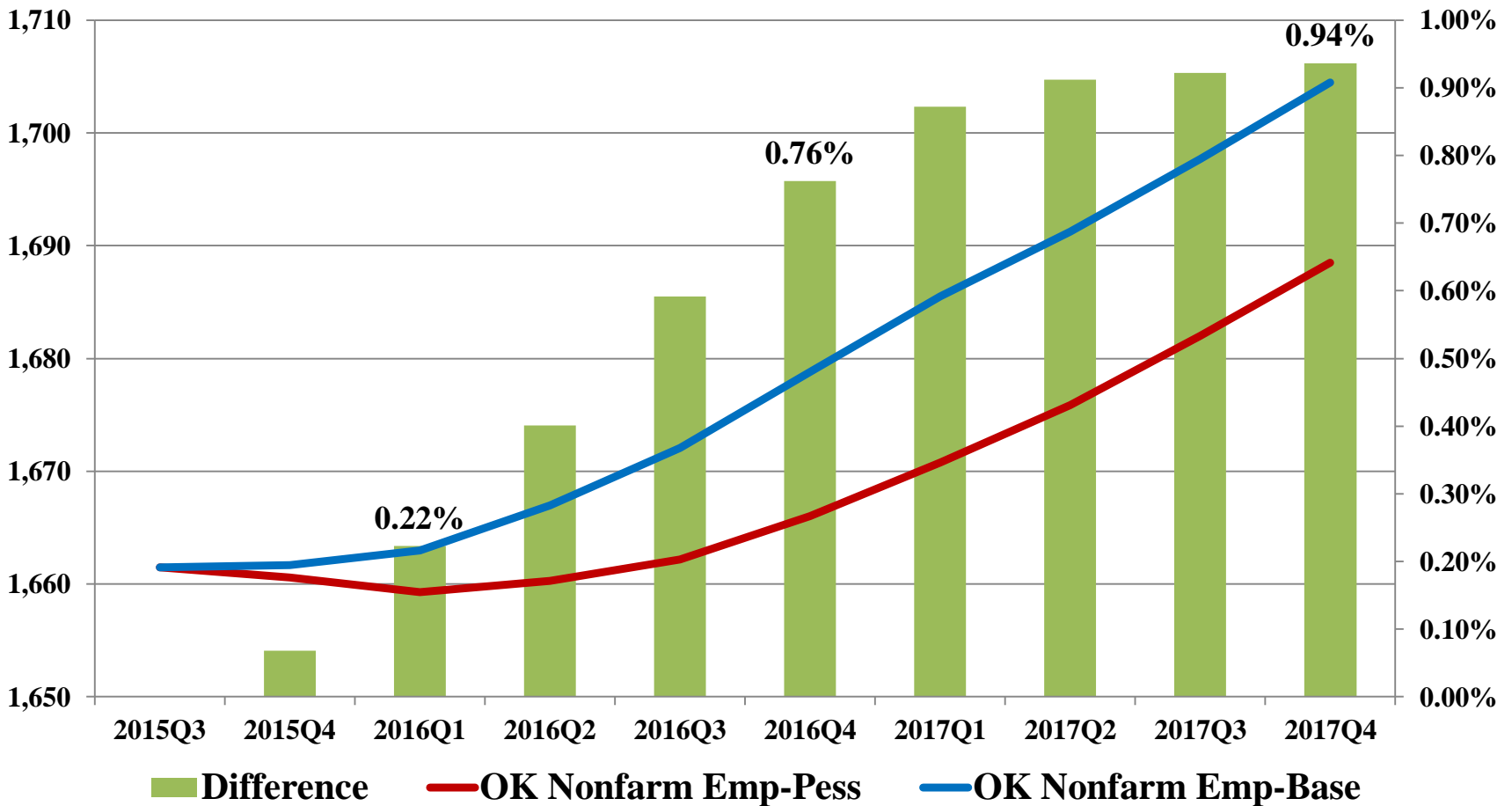
U.S. and Oklahoma Mining Employment (Annualized % Change)



US and Oklahoma Nonfarm Employment Growth Rates (Deseasonalized Annualized % change)



Pessimistic Scenario: Oklahoma Nonfarm Employment



THANK YOU!

Contact us for programs to be offered on-site at your organization

Web: www.cepd.okstate.edu

Twitter: @OSUCEPD

Facebook: OSUCEPD

Phone: 405-744-5208



CENTER FOR

**EXECUTIVE &
PROFESSIONAL
DEVELOPMENT**