



Spears School  
OF BUSINESS

# 2012 ECONOMIC OUTLOOK: NATIONAL, STATE AND LOCAL FORECASTS

Dan Rickman

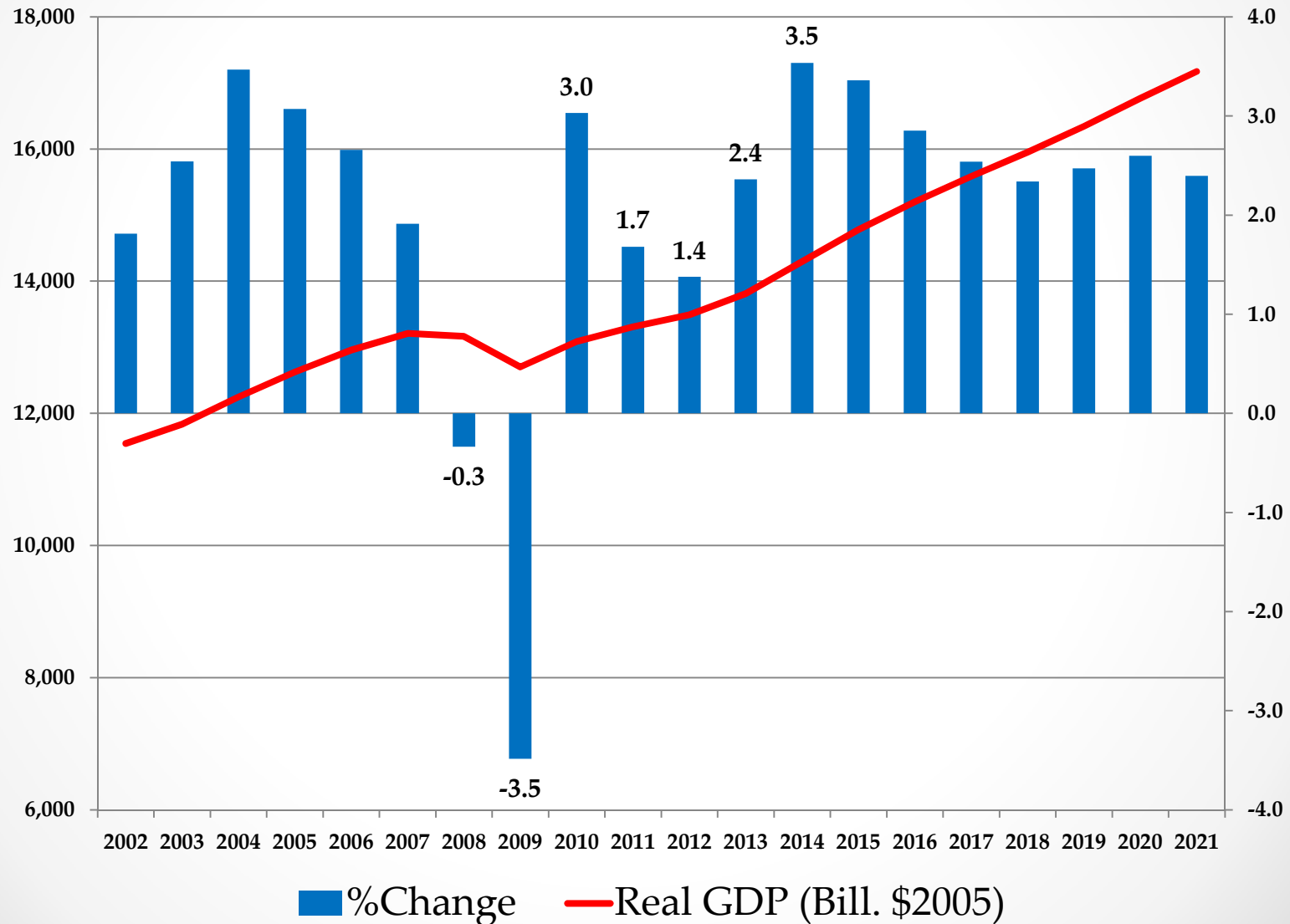
Regents Professor of Economics and Oklahoma Gas and  
Electric Services Chair in Regional Economic Analysis



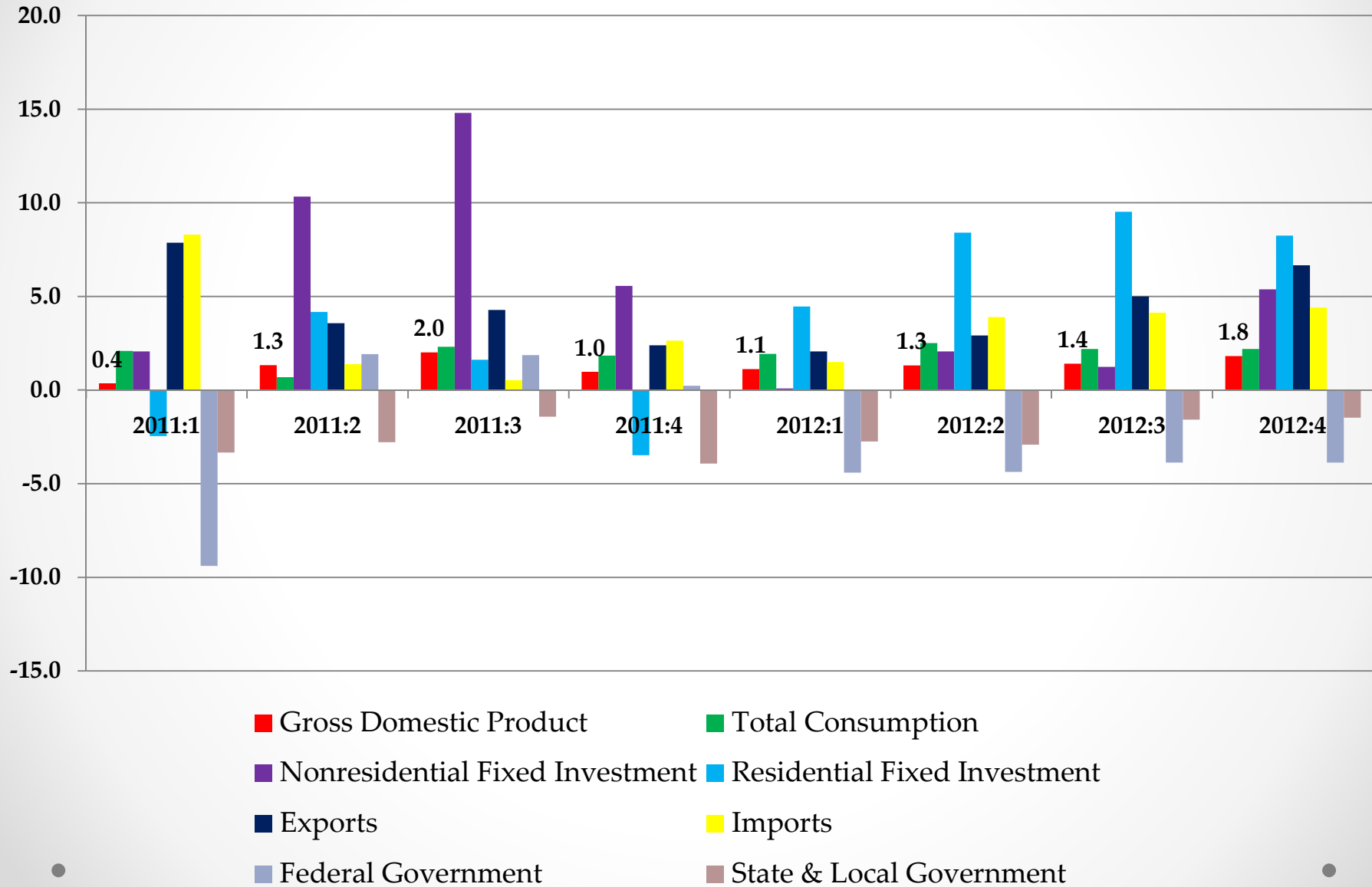
Spears School  
OF BUSINESS

Center for Applied  
Economic Research

# U.S. Real Gross Domestic Product: IHS Global Insight Forecast

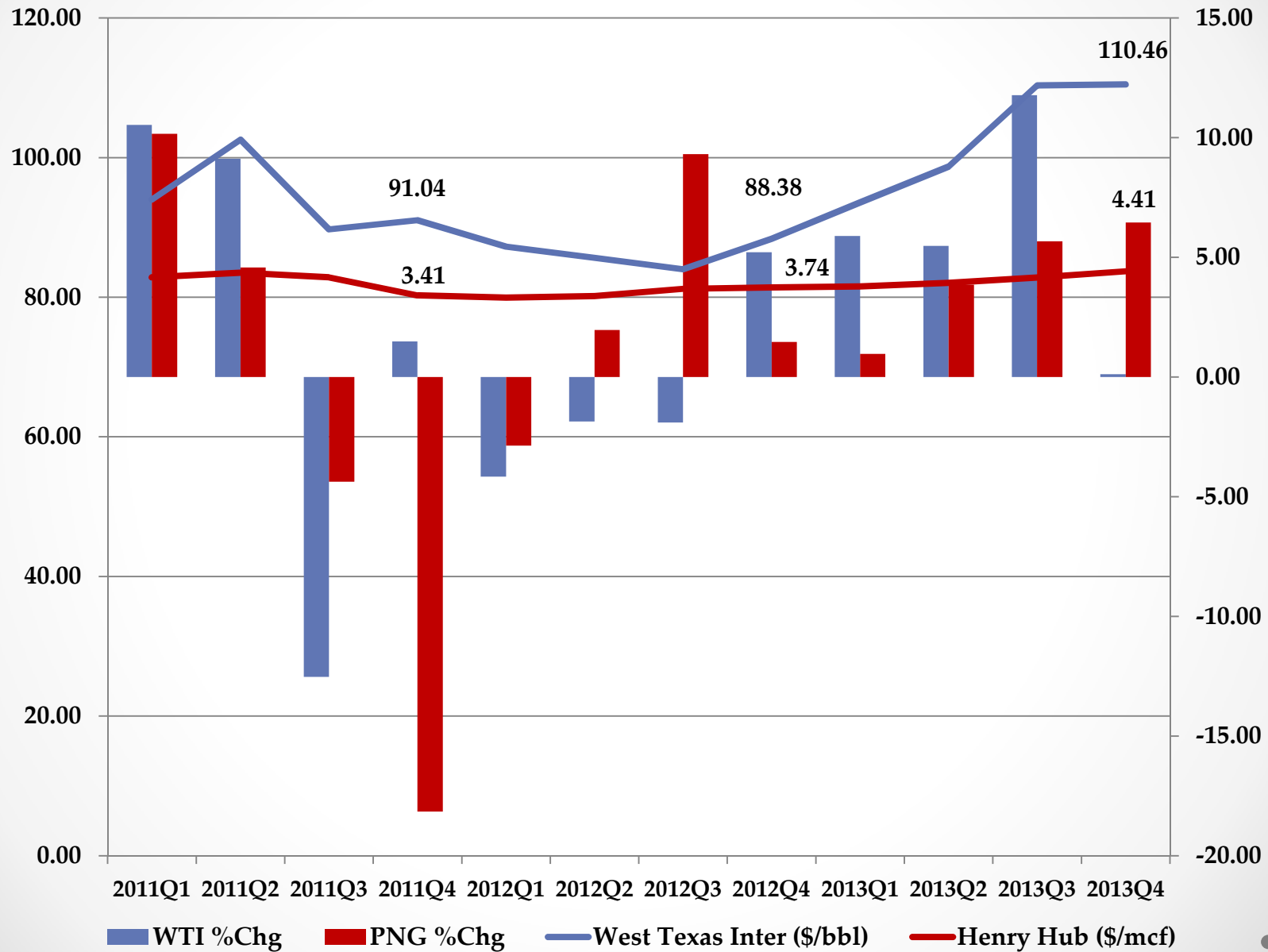


## Quarterly U.S. Real GDP Component Growth (% Annualized Growth Rates)

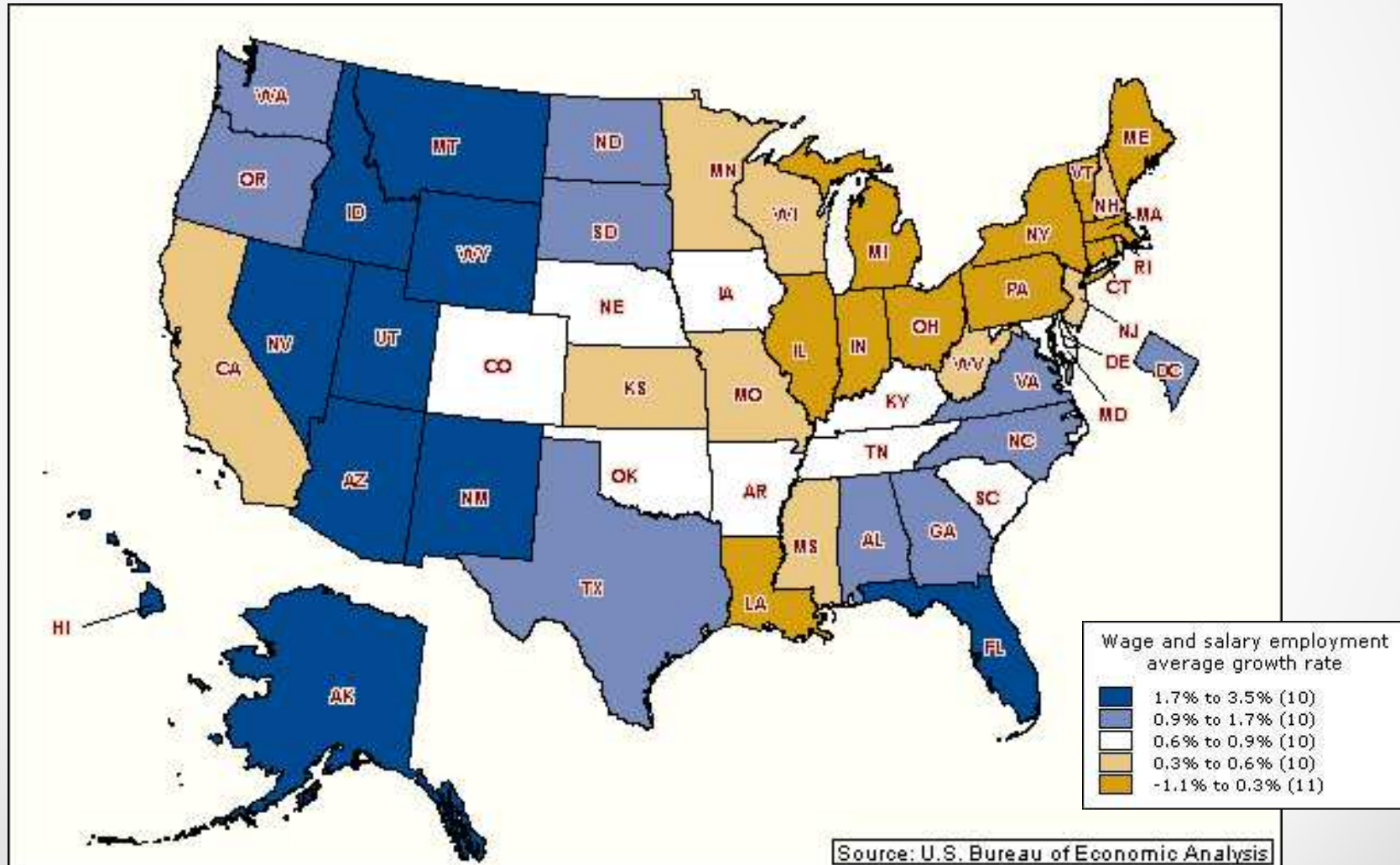




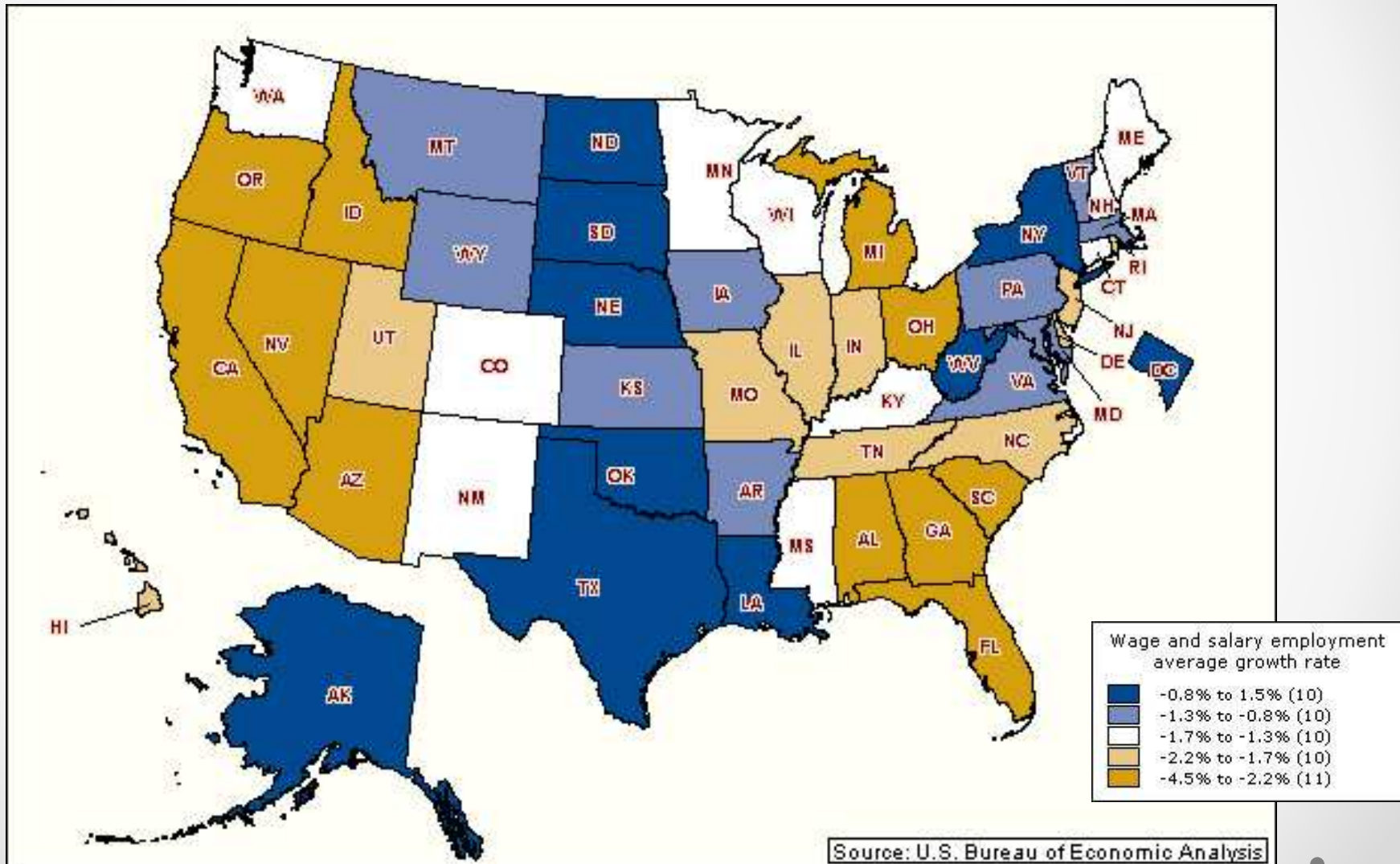
## Energy Prices: West Texas Intermediate Oil and Henry Hub NG



## Employment Growth (Wage and Salary): 2001-2007



## Employment Growth (Wage and Salary): 2007-2010



## Wage and Salary Employment Growth (BEA)

		2001-2007 (%chg)		2007-2010 (%chg)	
1	<b>Nevada</b>	23.3	1	North Dakota	4.6
2	<b>Arizona</b>	18.2	2	Alaska	1.7
3	Wyoming	16.2	3	South Dakota	0.0
4	Utah	15.9	4	Texas	-0.4
5	<b>Idaho</b>	14.9	5	Louisiana	-1.3
<b>23</b>	<b>Oklahoma</b>	<b>4.6</b>	<b>8</b>	<b>Oklahoma</b>	<b>-2.2</b>
46	Louisiana	0.1	46	<b>Idaho</b>	-8.0
47	Illinois	-0.1	47	<b>Michigan</b>	-9.6
48	Massachusetts	-1.5	48	Florida	-9.9
49	Ohio	-1.9	49	<b>Arizona</b>	-10.6
50	<b>Michigan</b>	-6.3	50	<b>Nevada</b>	-13.0



## Explaining State Employment Growth Differences

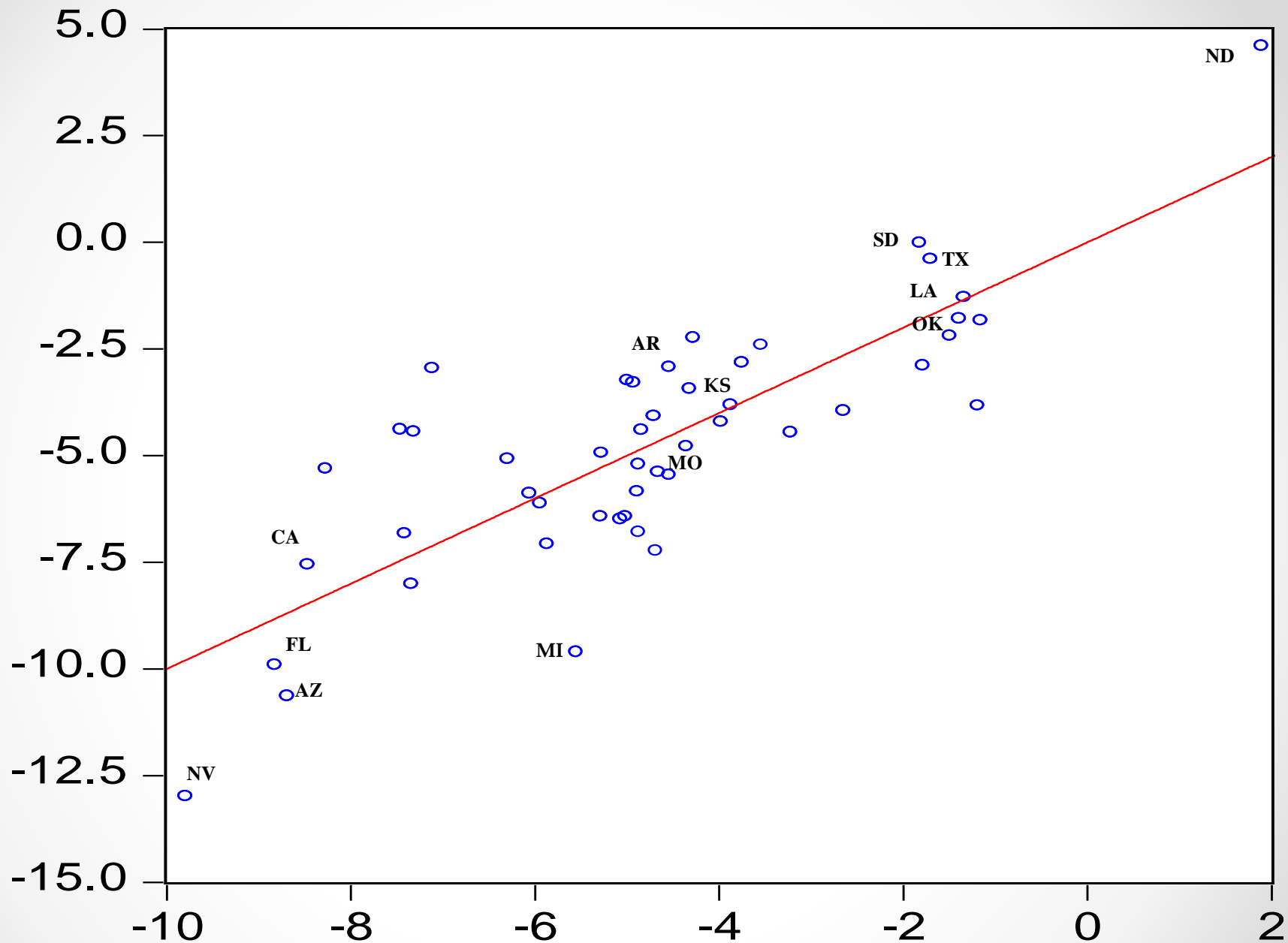
	REGRESSIONS	
	2001-2007	2007-2010
<b>Natural Amenity Ranking</b>	Sig. positive (+3.7%)	<b>Sig. negative (-1.0%)</b>
<b>Energy State</b>	0	Sig. positive (+3.4%)
<b>Farm State</b>	Sig. positive (+4.9%)	Sig. positive (+2.6%)
<b>Manufacturing State</b>	0	<b>Sig. negative (-2.8%)</b>
<b>Construction Employment 2002-2006 (%chg)</b>	NA	<b>Sig. negative [+0.7,-3.1]</b>
<b>R-Squared</b>	0.51	0.66

**Energy:** AK, CO, LA, MT, ND, OK, TX, WV, WY

**Farm:** IA, MT, NE, ND, SD

**Manufacturing:** IL, IN, MI, OH, PA, WI

**% Actual  
Growth  
07-10**

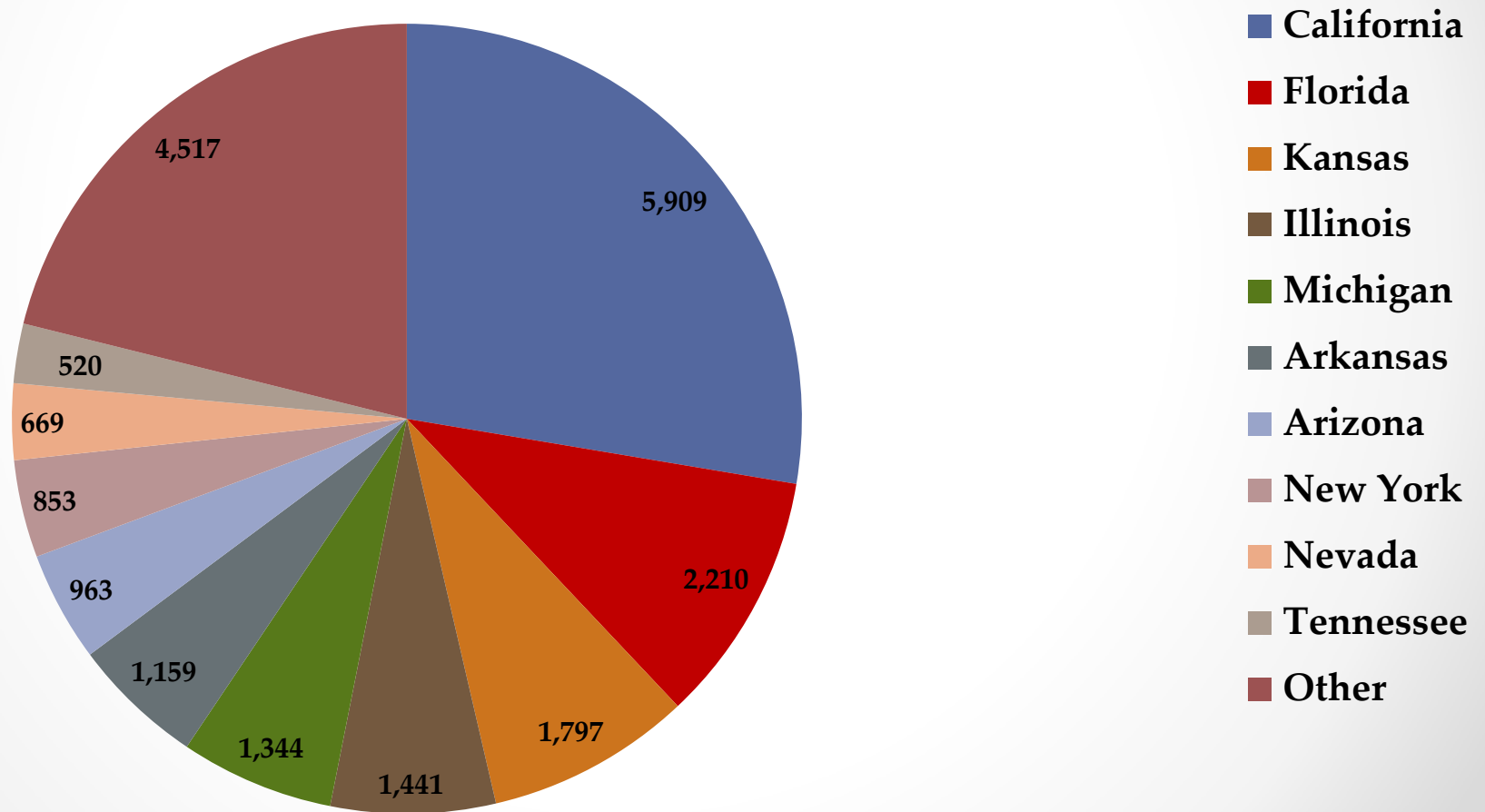


**% Predicted  
Growth: 07-10**

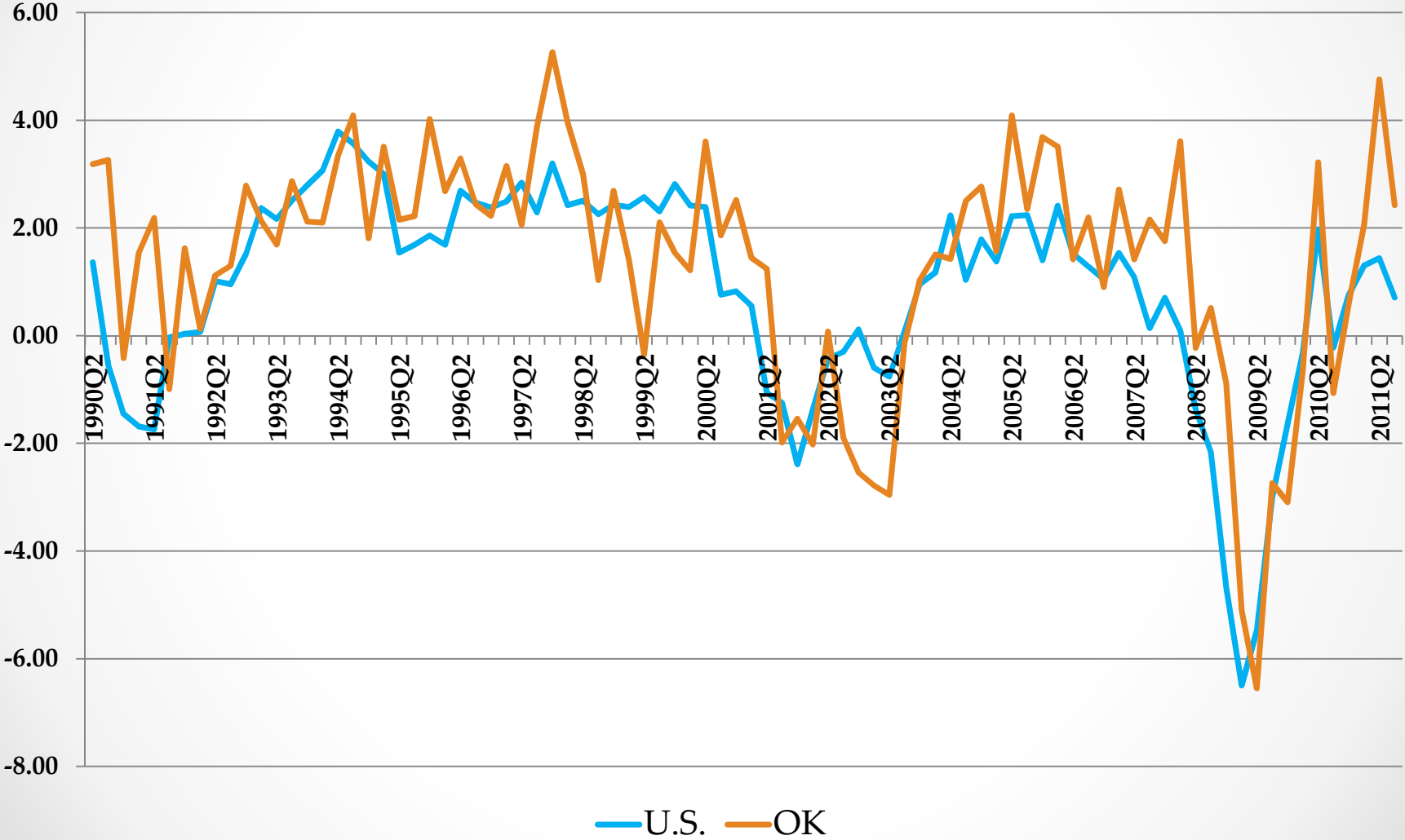
# Net Migration to Oklahoma 2007-2009: Contributing States

(Source: IRS Statistics on Income, Exemptions)

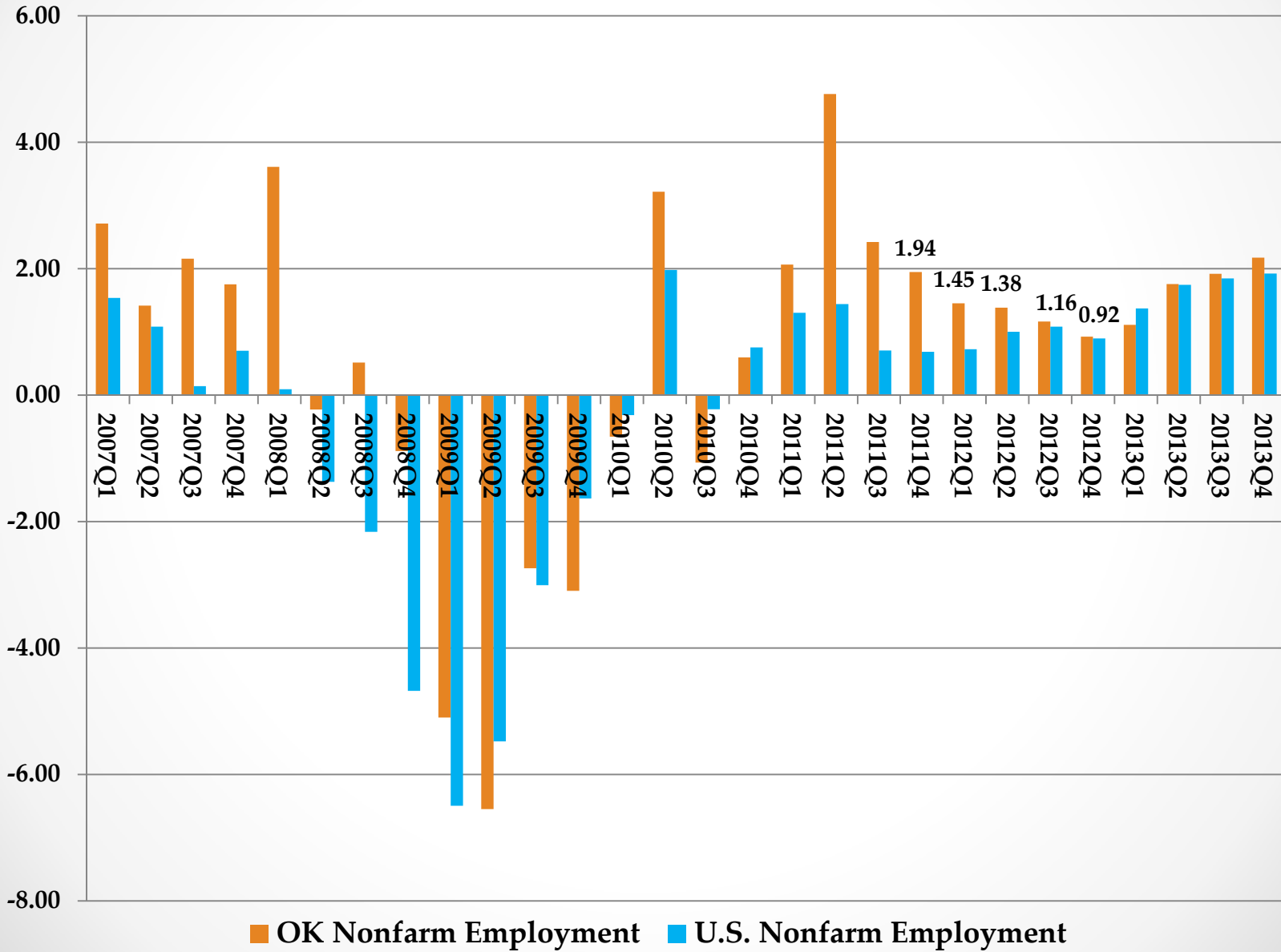
Net Migration (from all states): 21,891



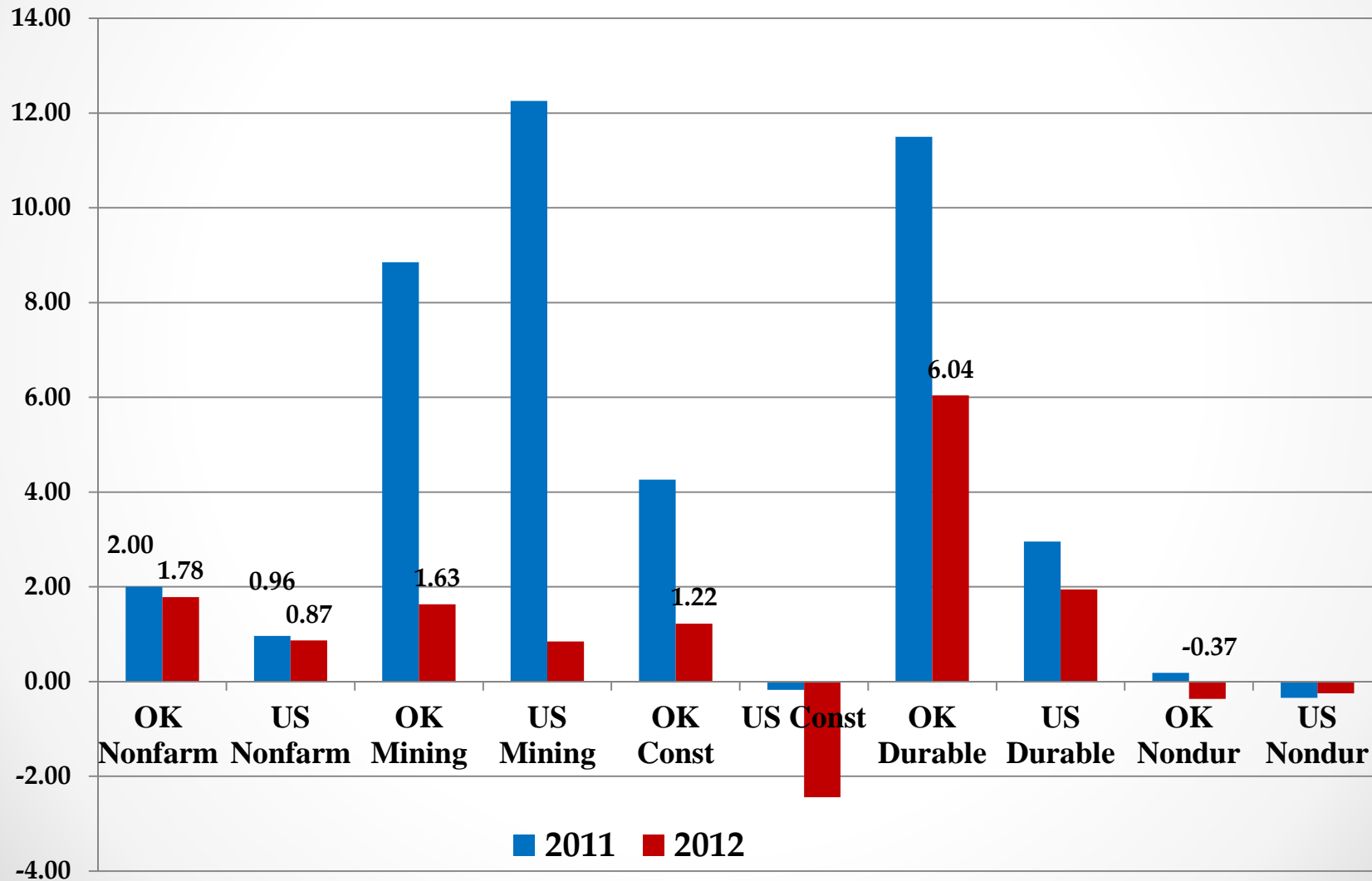
Quarterly U.S. and Oklahoma Nonfarm Employment Growth  
1990Q1-2011Q3: (Seasonally-Adjusted Annualized Percent Change)



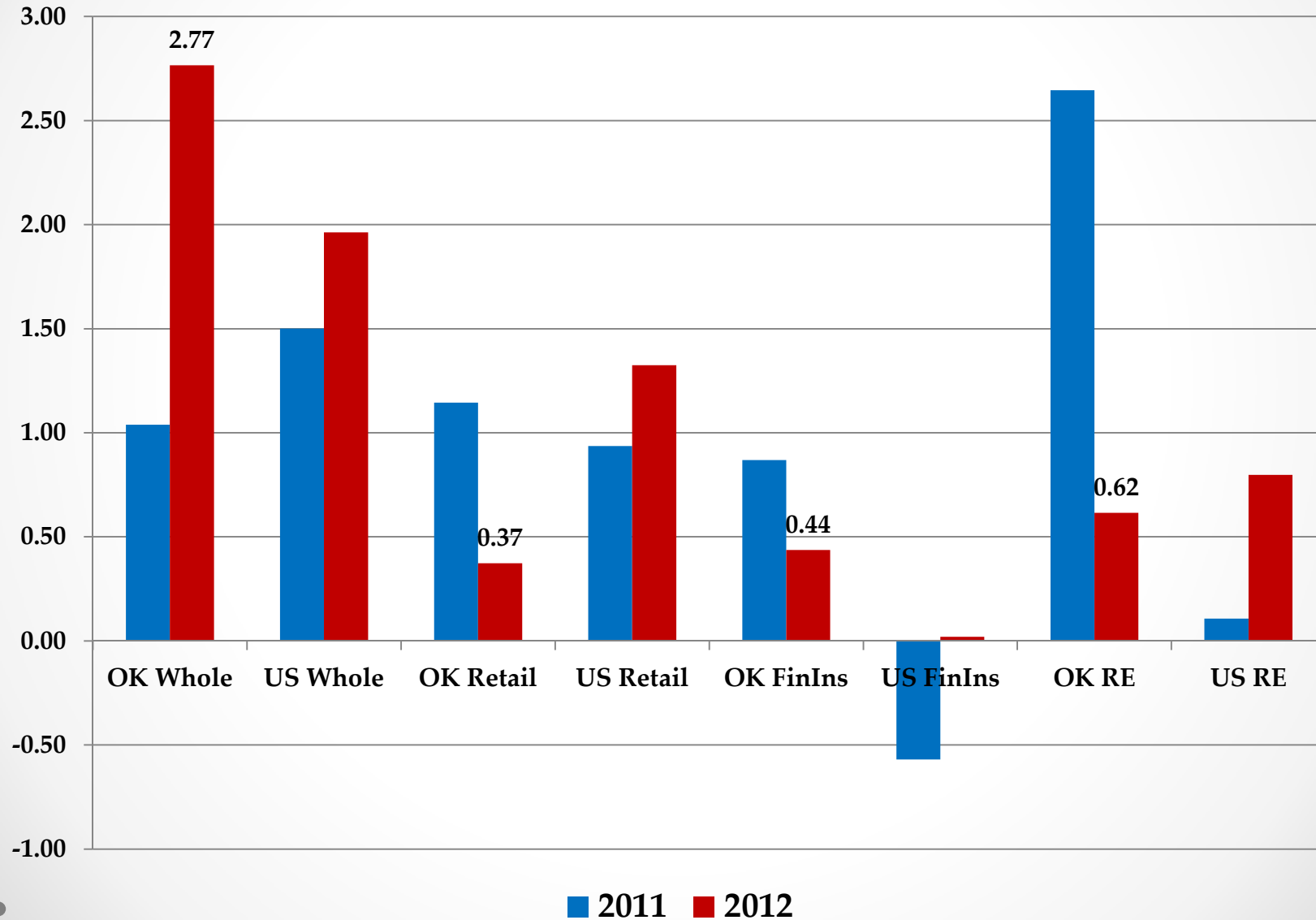
## Quarterly U.S. and Oklahoma Nonfarm Employment Growth (Seasonally-Adjusted Annualized Percent Change)



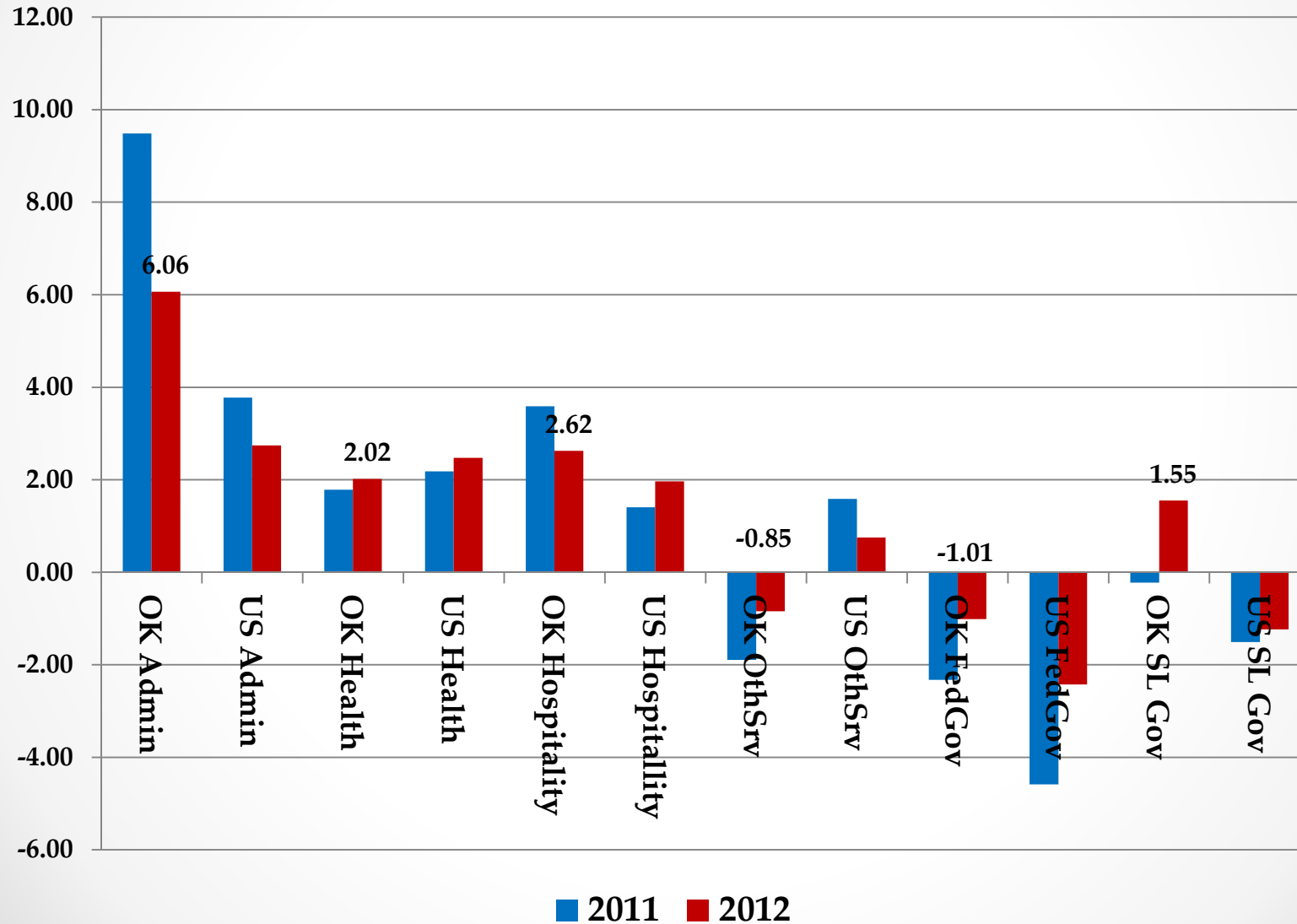
## Nonfarm and Key Sector Annual Employment Growth Rates: U.S. and Oklahoma (Percent Change)



## Key Sector Annual Employment Growth Rates: U.S. and Oklahoma (Percent Change)

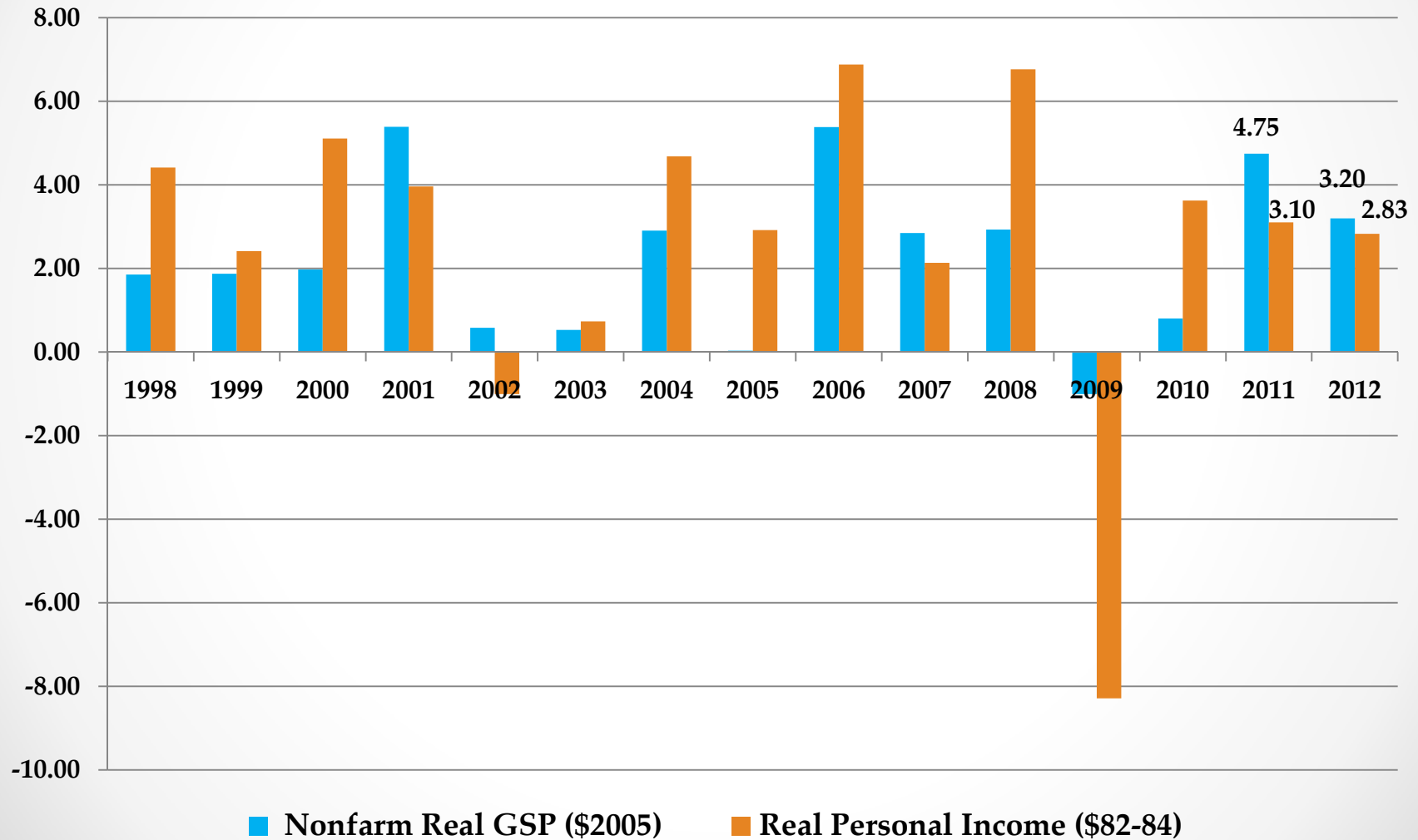


## Key Sector Annual Employment Growth Rates: U.S. and Oklahoma (Percent Change)

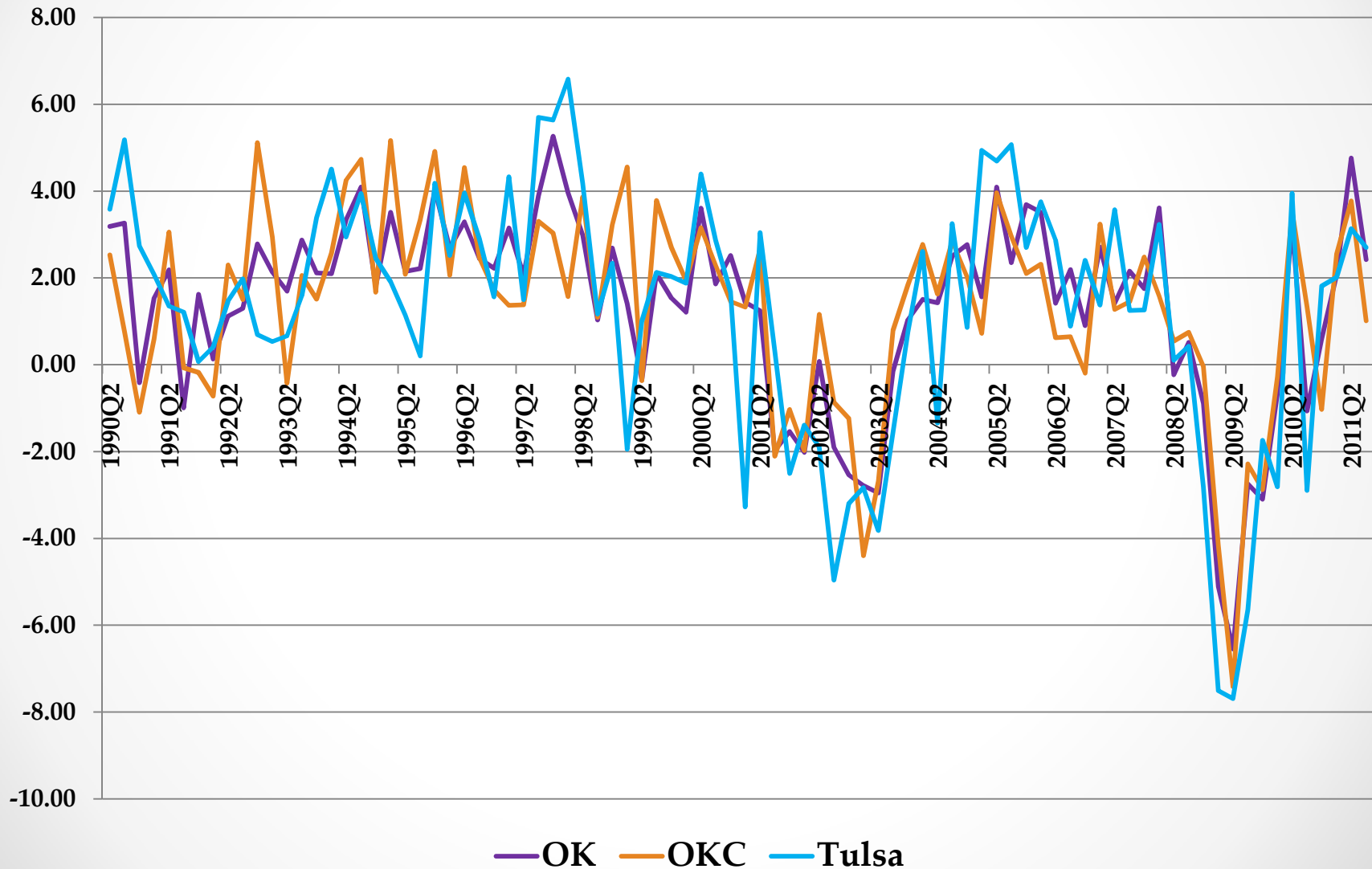




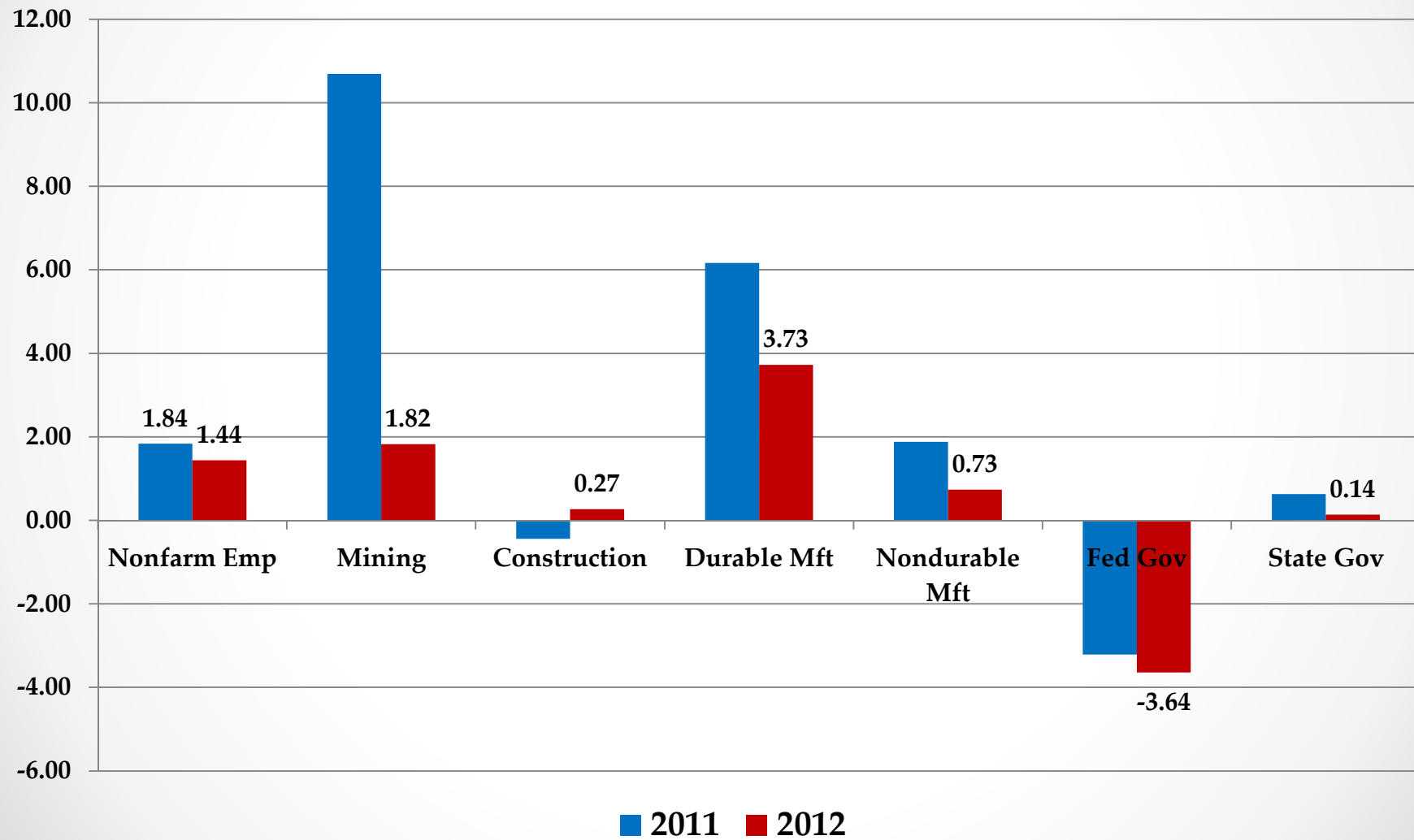
## Annual Growth of OK Real GSP and Real Personal Income (Percent Change)



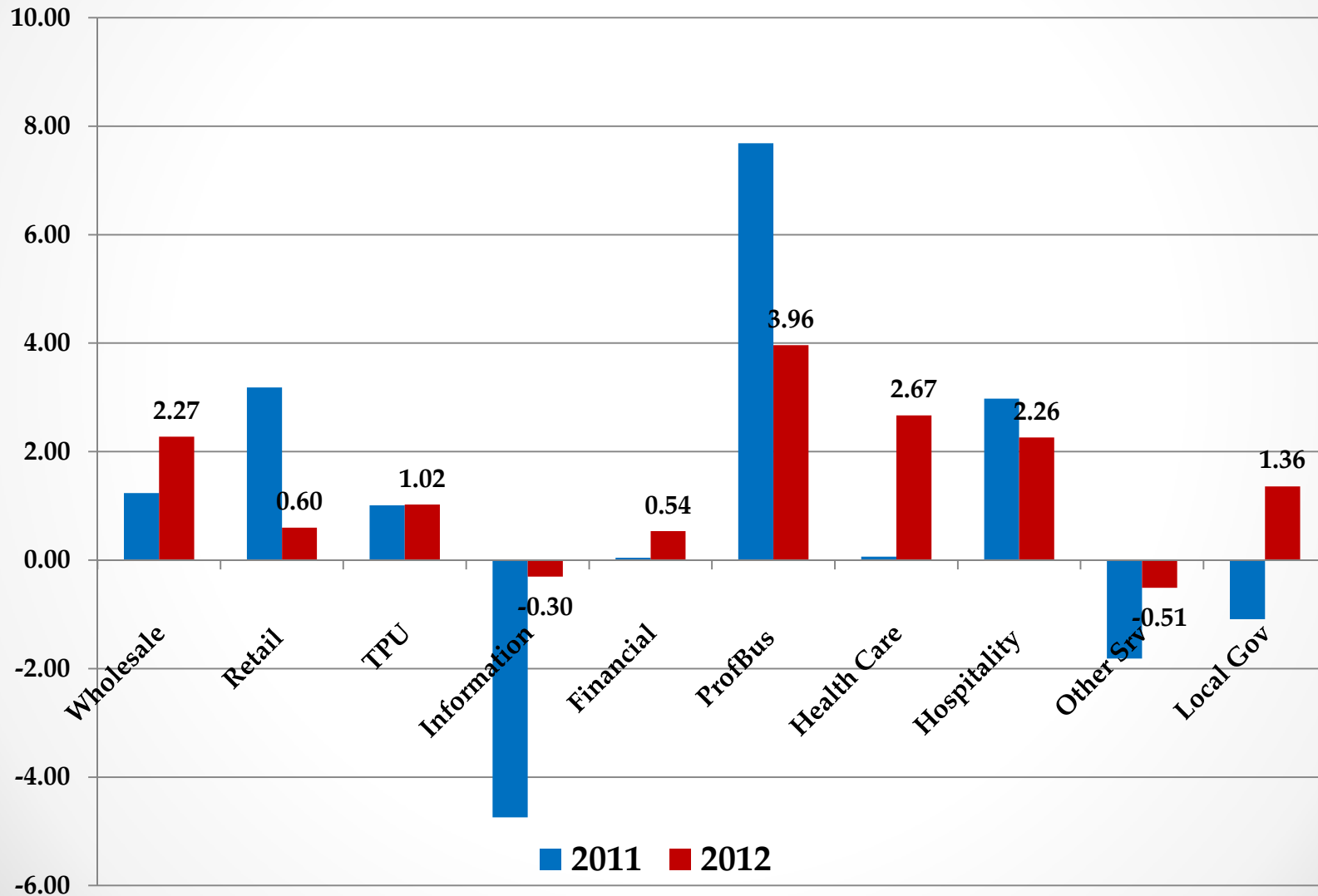
# Quarterly Oklahoma, OKC and Tulsa Nonfarm Employment Growth (Seasonally-Adjusted Annualized Percent Growth)



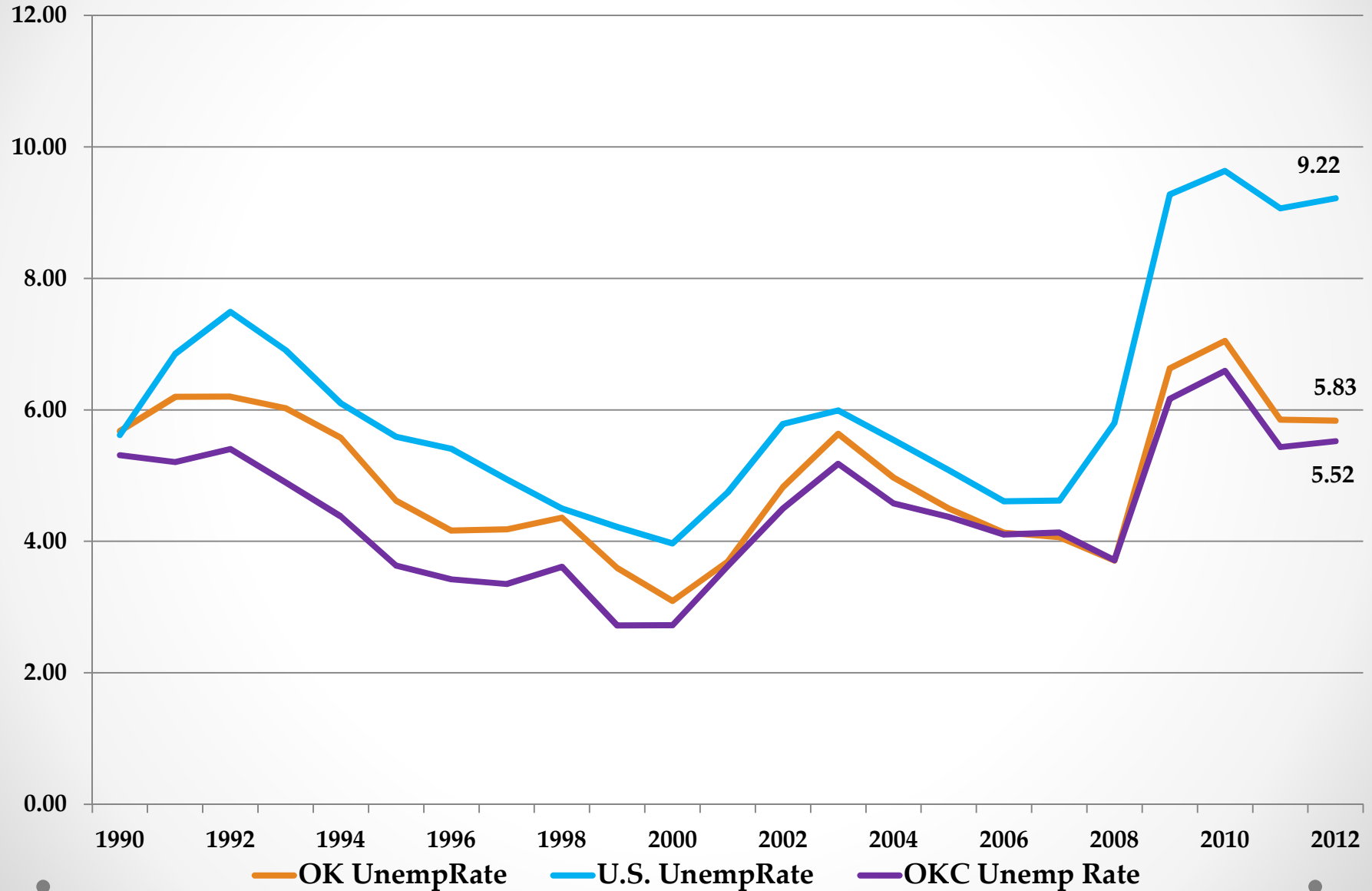
# OKC Nonfarm and Key Sector Annual Employment Growth Rates: (Percent Change)



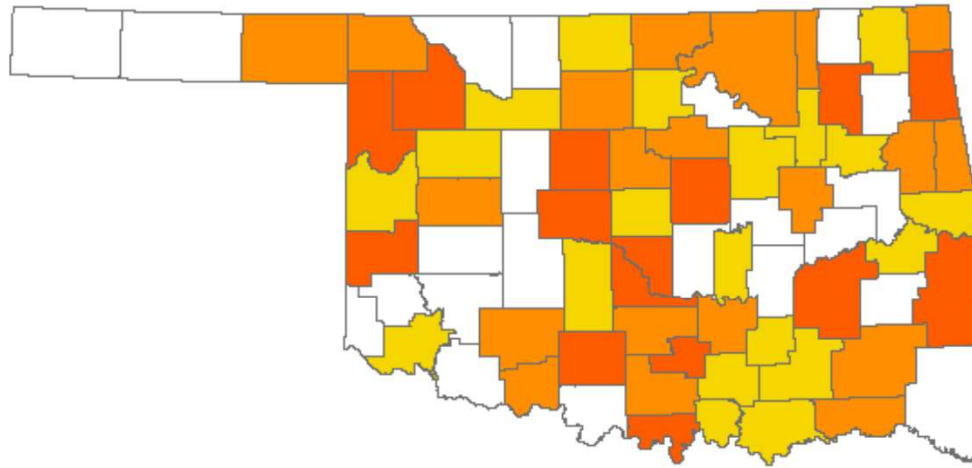
# OKC Key Sector Annual Employment Growth Rates: (Percent Change)



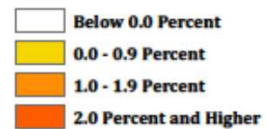
Annual Average Unemployment Rates (Percent)



## 2012 Oklahoma QCEW Forecasted Employment Growth Rates by County

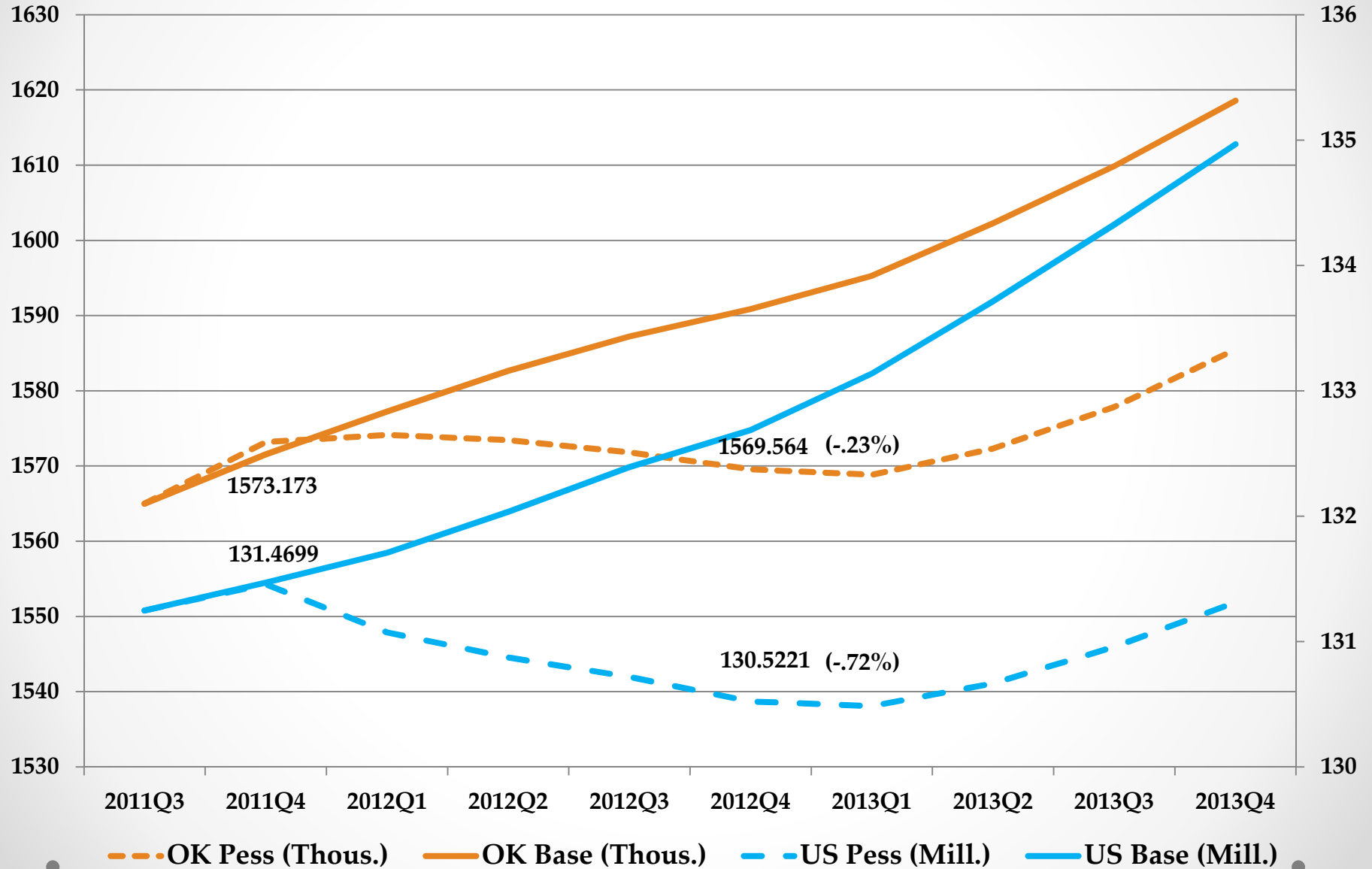


### Forecasted Employment Growth Rate



Farm Counties (15): -1.78%  
Rural County, Pop. < 2,500 (13): +1.21%  
Persistent Child Poverty (27): -1.56%

# IHS Global Insight Pessimistic Scenario



Thank you for your attention