



**Spears School
OF BUSINESS**

Oklahoma Economic Outlook 2016

by Dan Rickman

Regents Professor of Economics and Oklahoma Gas and
Electric Services Chair in Regional Economic Analysis

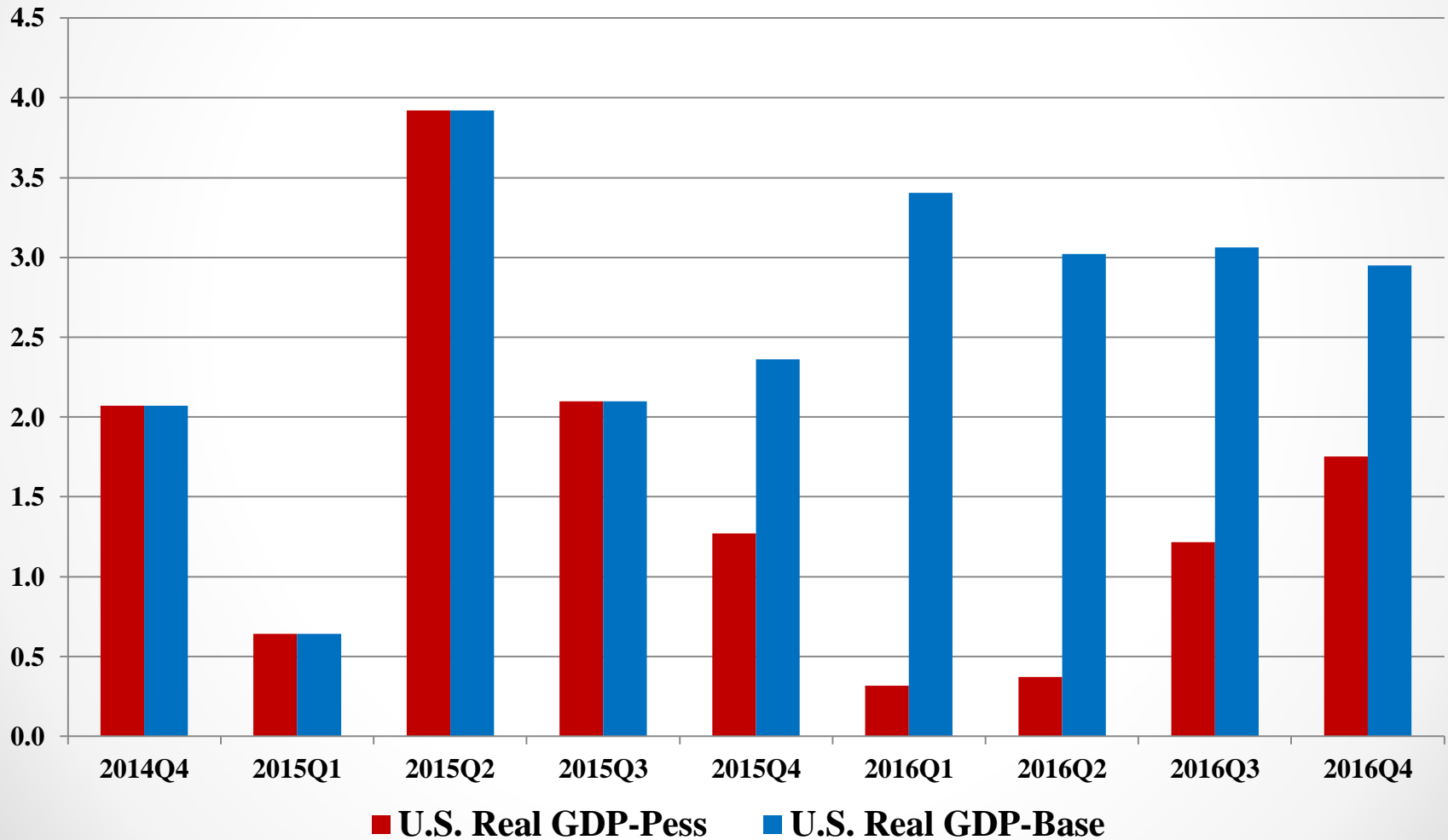


**Spears School
OF BUSINESS**

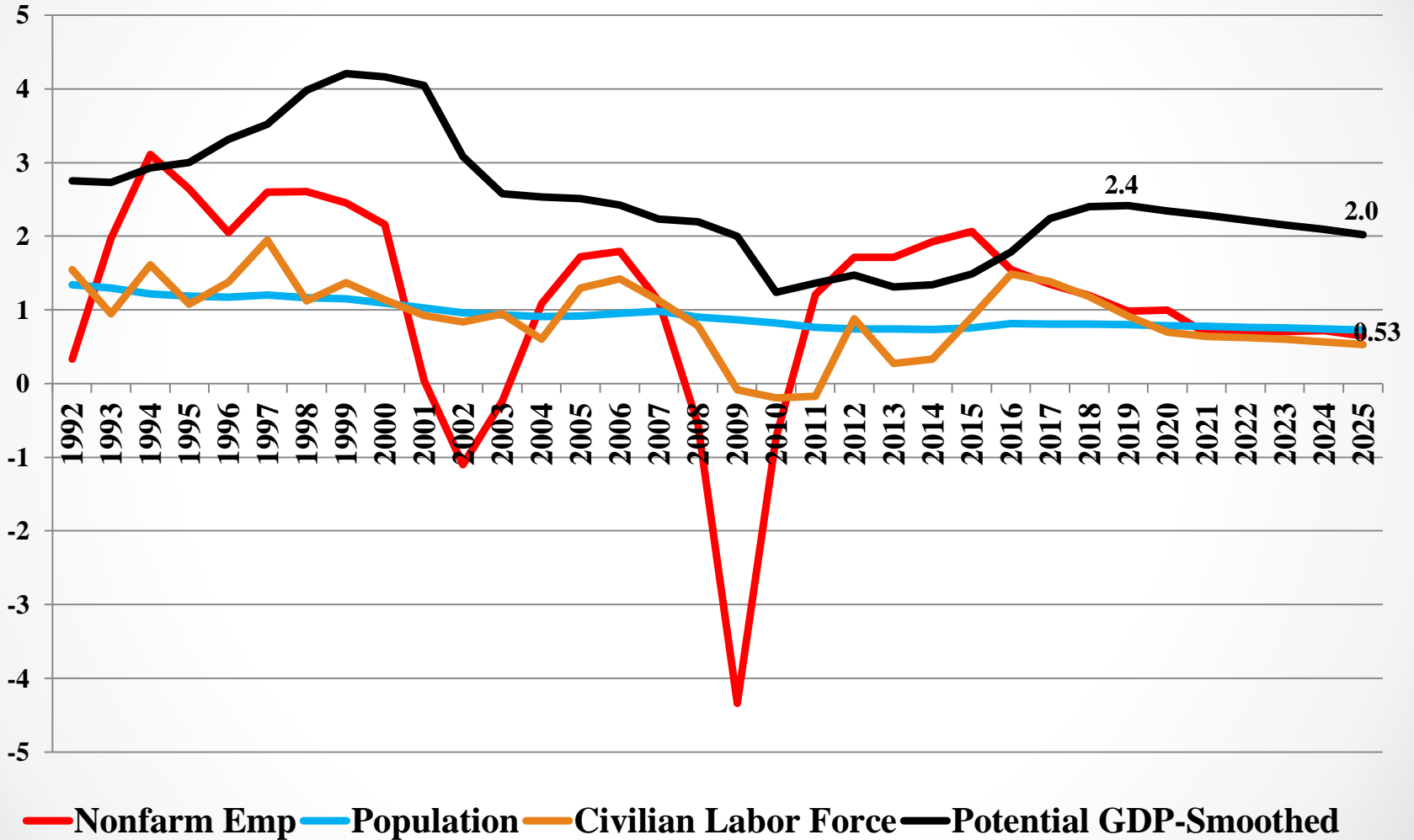
**Center for Applied
Economic Research**

<http://economy.okstate.edu/>

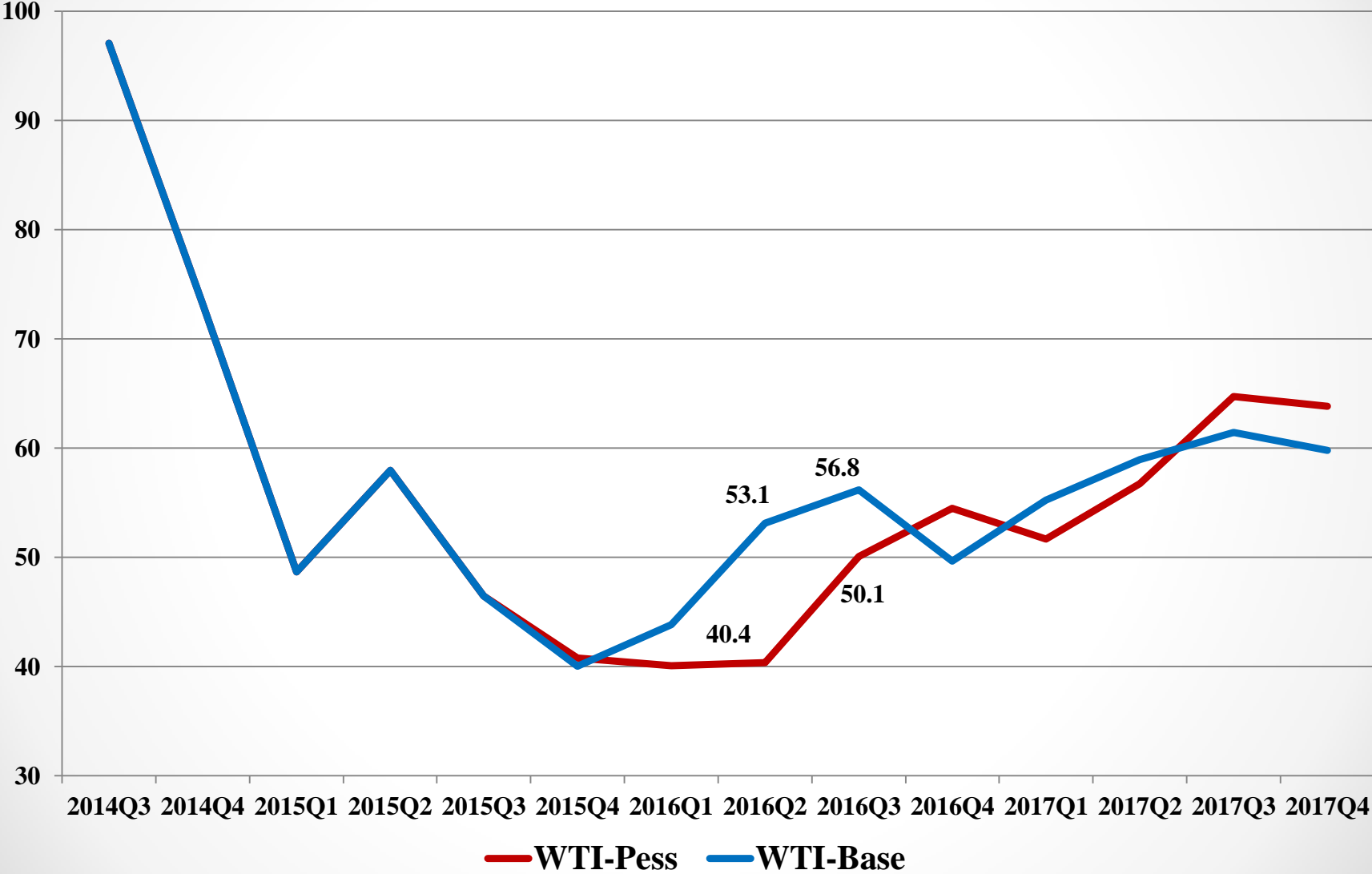
U.S. Real Gross Domestic Product Growth (%): IHS Global Insight Forecast



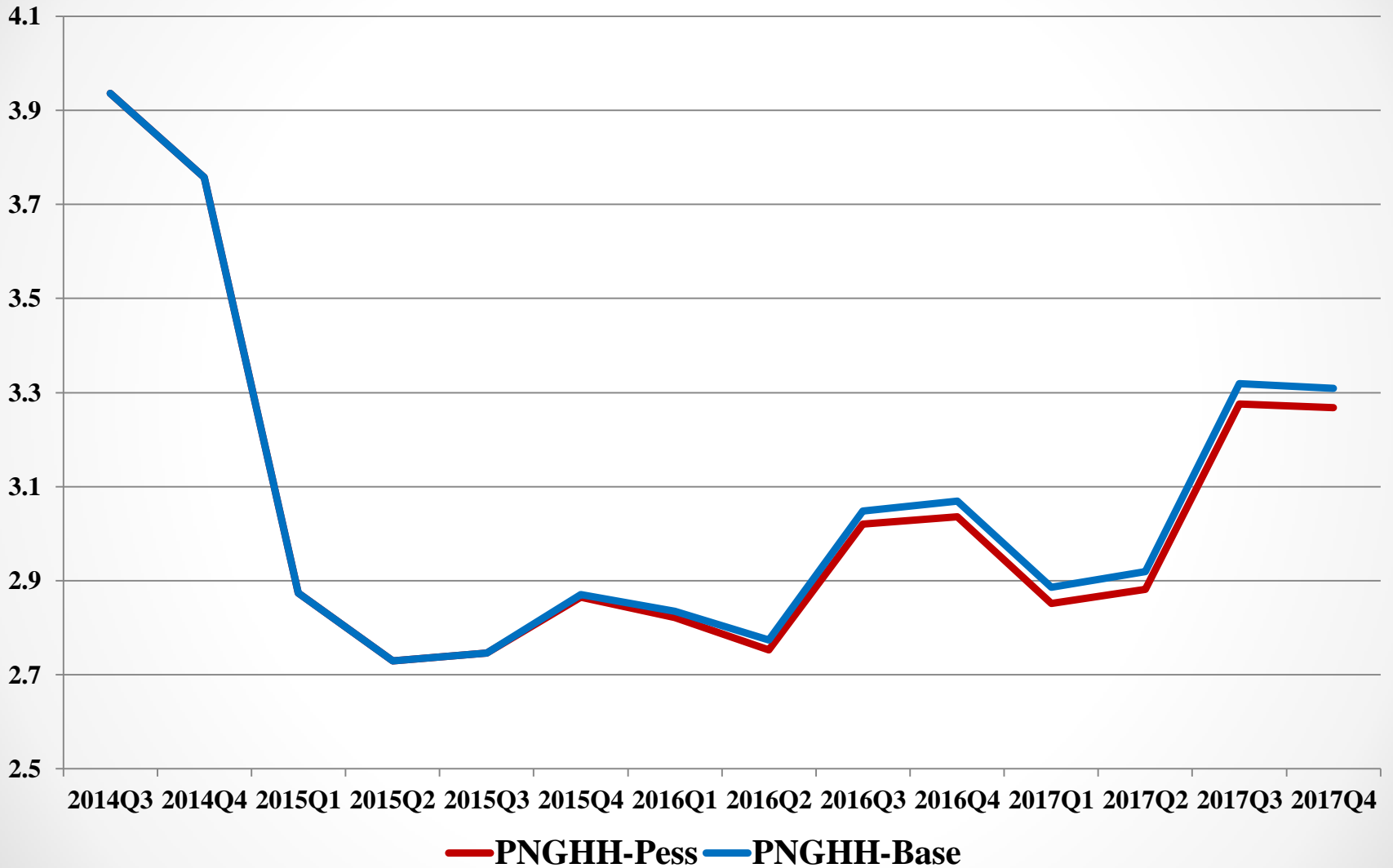
U.S. Potential GDP Growth (%): Population and Labor Force Growth Constraints (IHS Global Insight, Inc.)



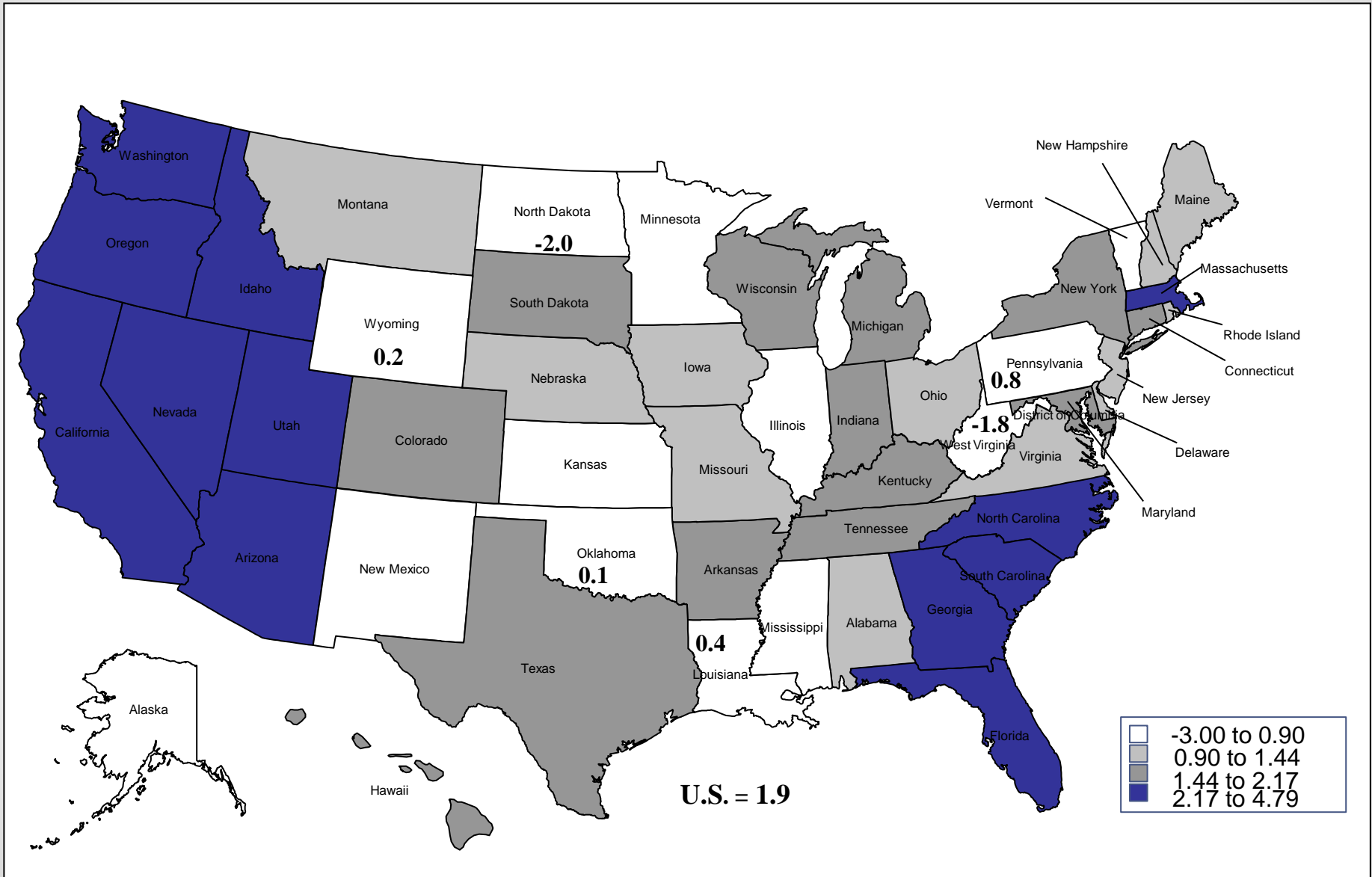
Oil Prices (IHS Global Insight, Inc.): West Texas Intermediate Oil (\$/bbl)



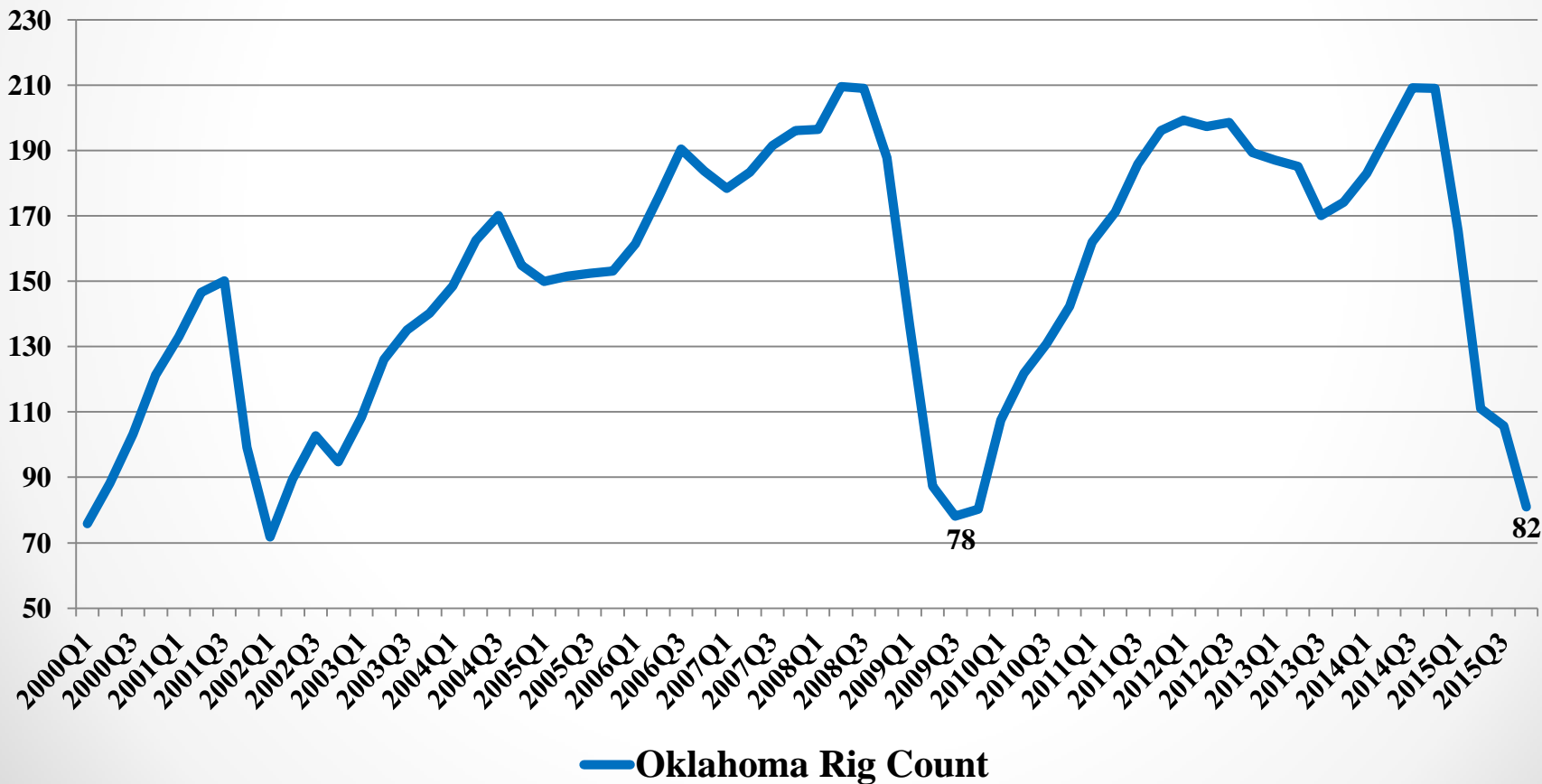
Natural Gas Prices (IHS Global Insight, Inc.): Henry Hub Natural Gas (\$/mmBtu)



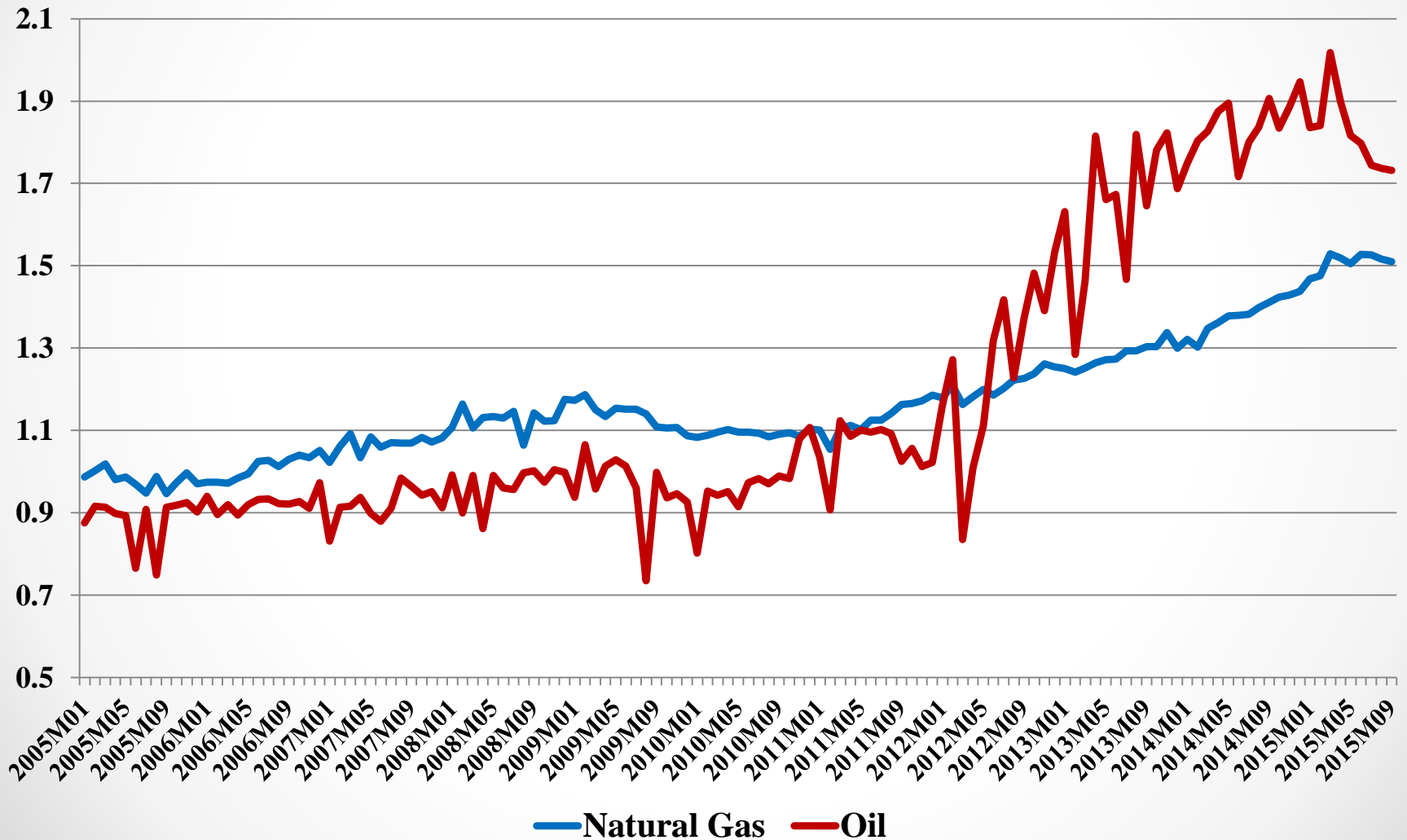
October 2014-2015 BLS Nonfarm Employment Growth Rates (%)



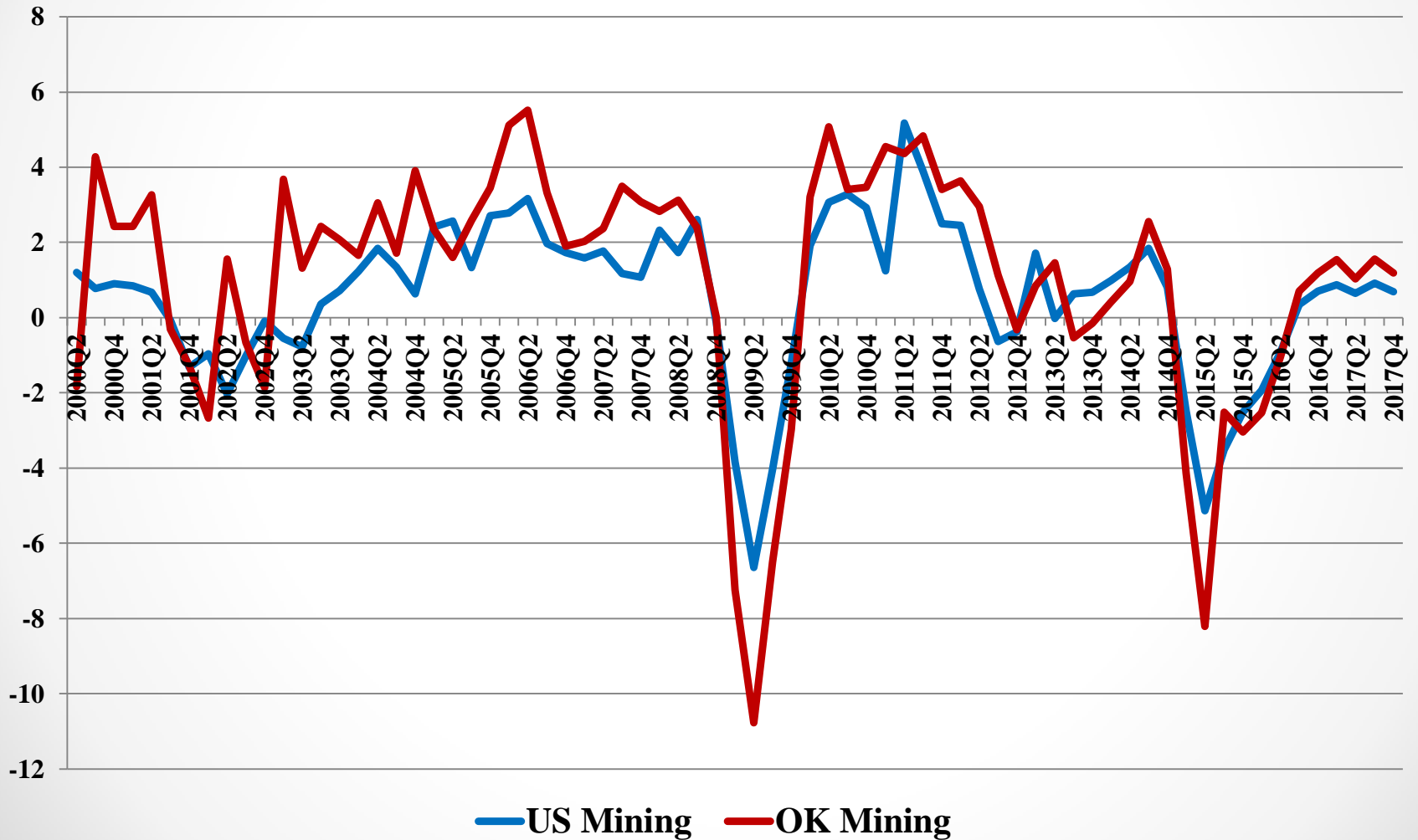
Oklahoma Rotary Rig Count (Baker Hughes)



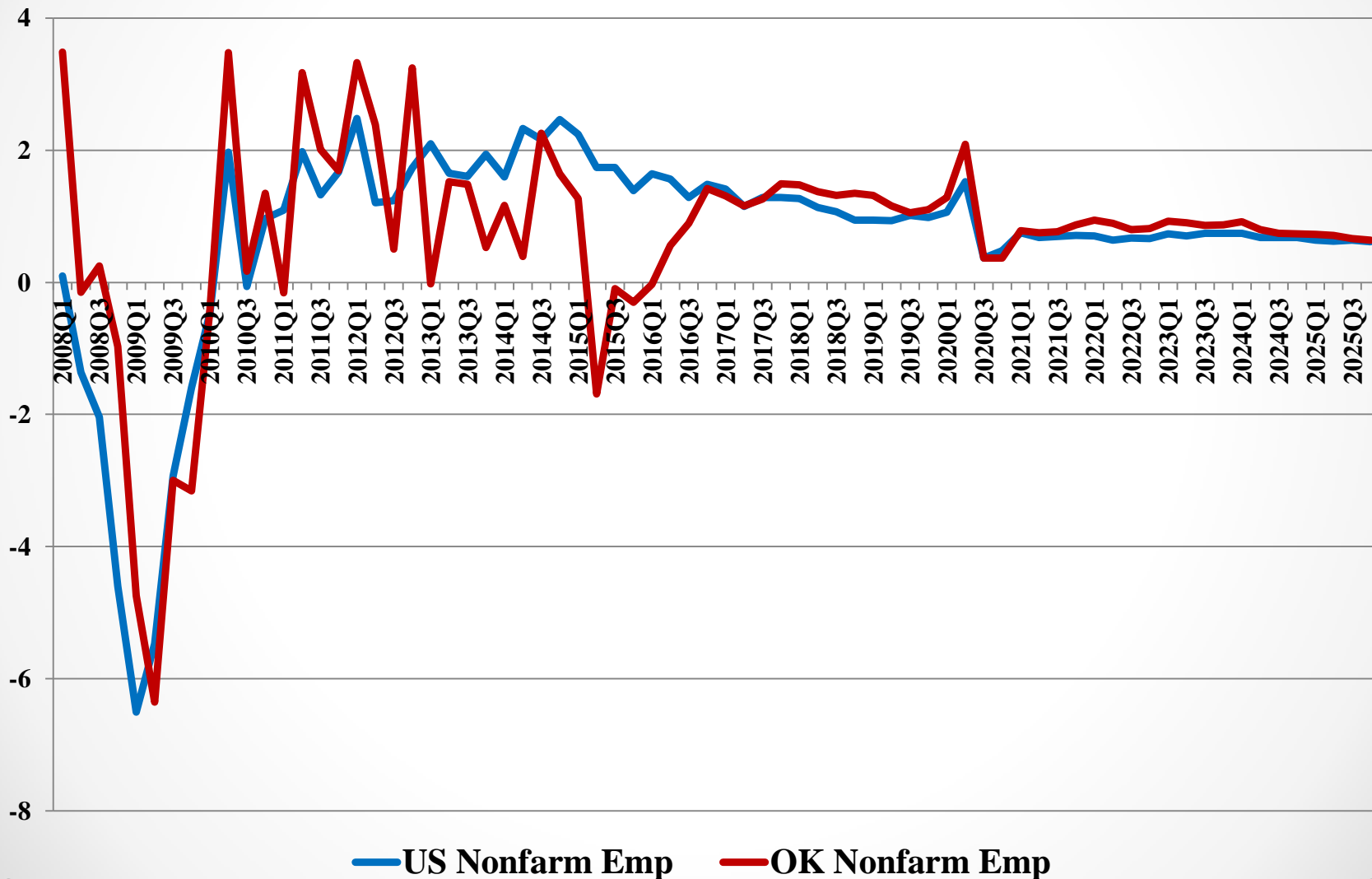
Oklahoma Energy Production: Deseasonalized (2000:1=1)



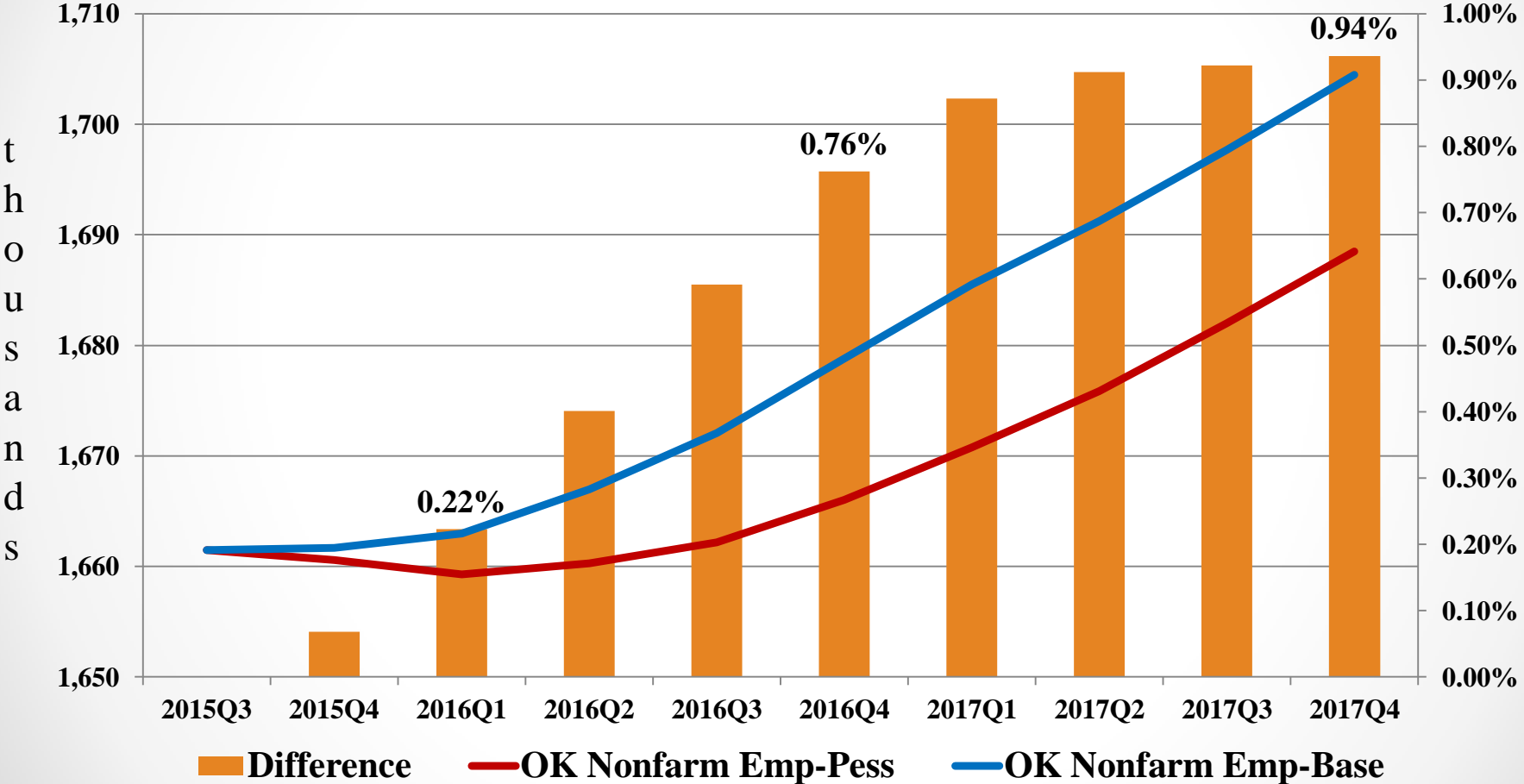
U.S. and Oklahoma Mining Employment (Annualized % Change)



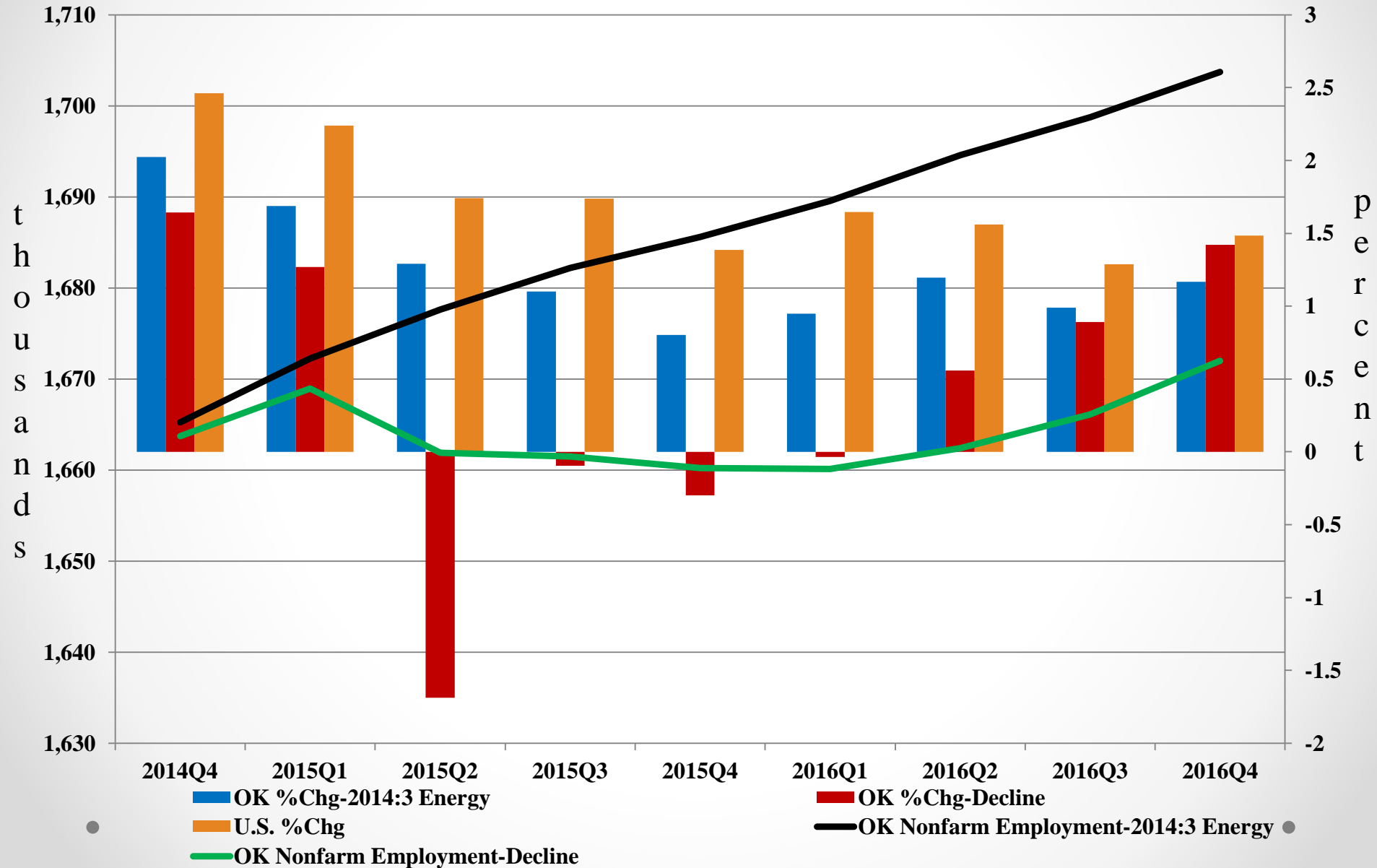
US and Oklahoma Nonfarm Employment Growth Rates (Deseasonalized Annualized % change)



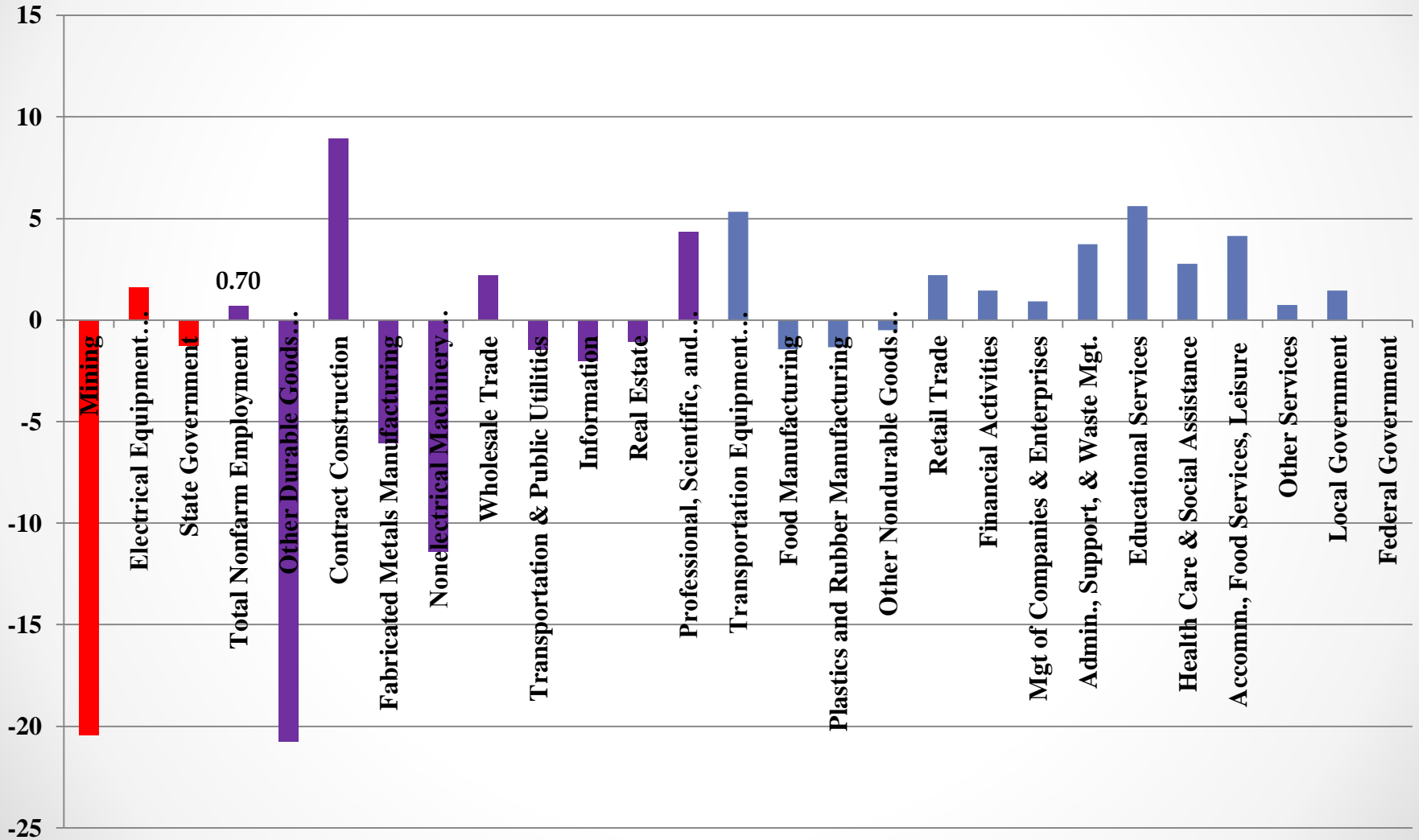
Pessimistic Scenario: Oklahoma Nonfarm Employment



Oklahoma Nonfarm Employment Growth Rate Comparison: No Decline in Energy Prices

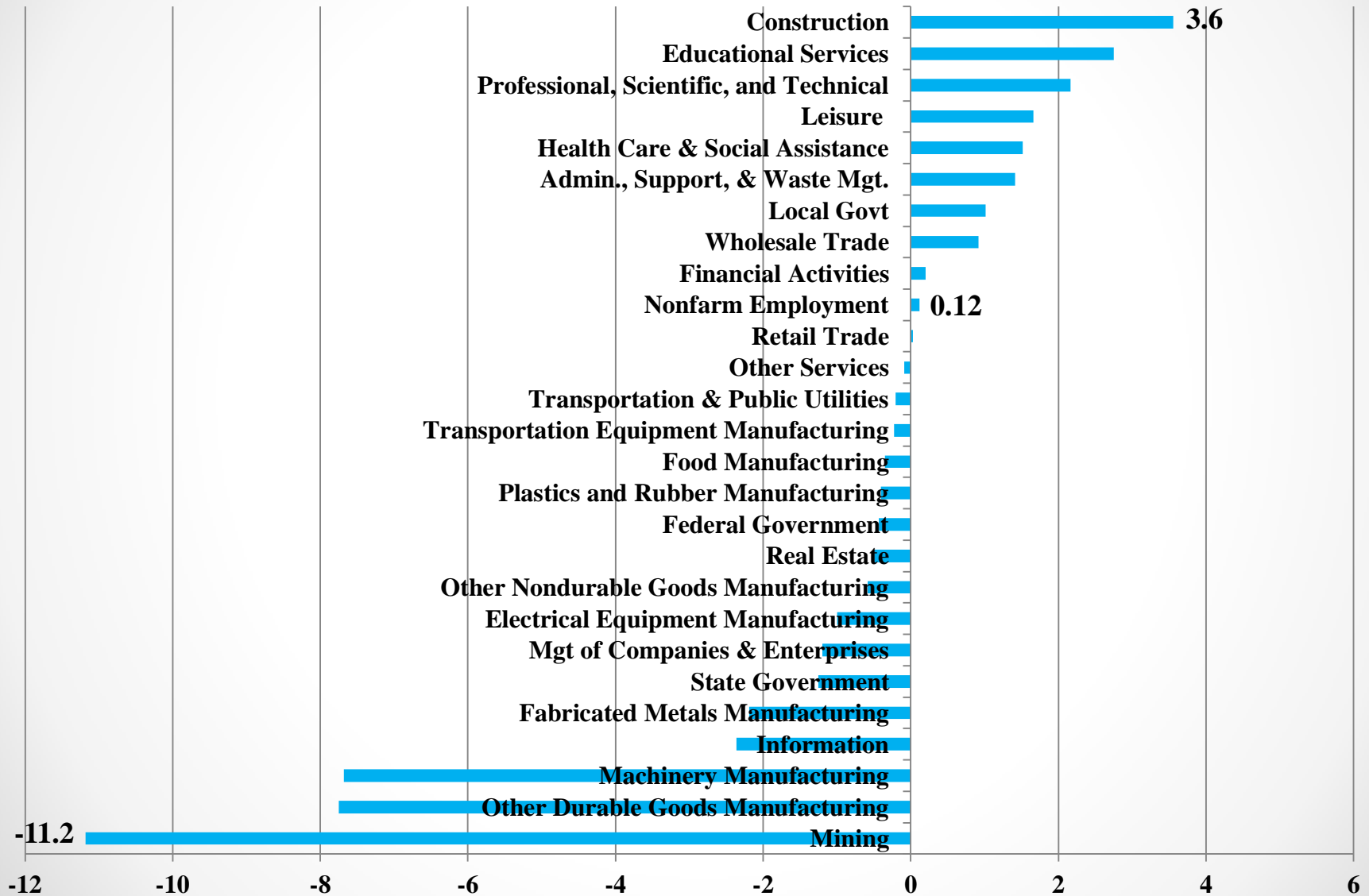


2014-2016 % Growth Oklahoma Sector Employment

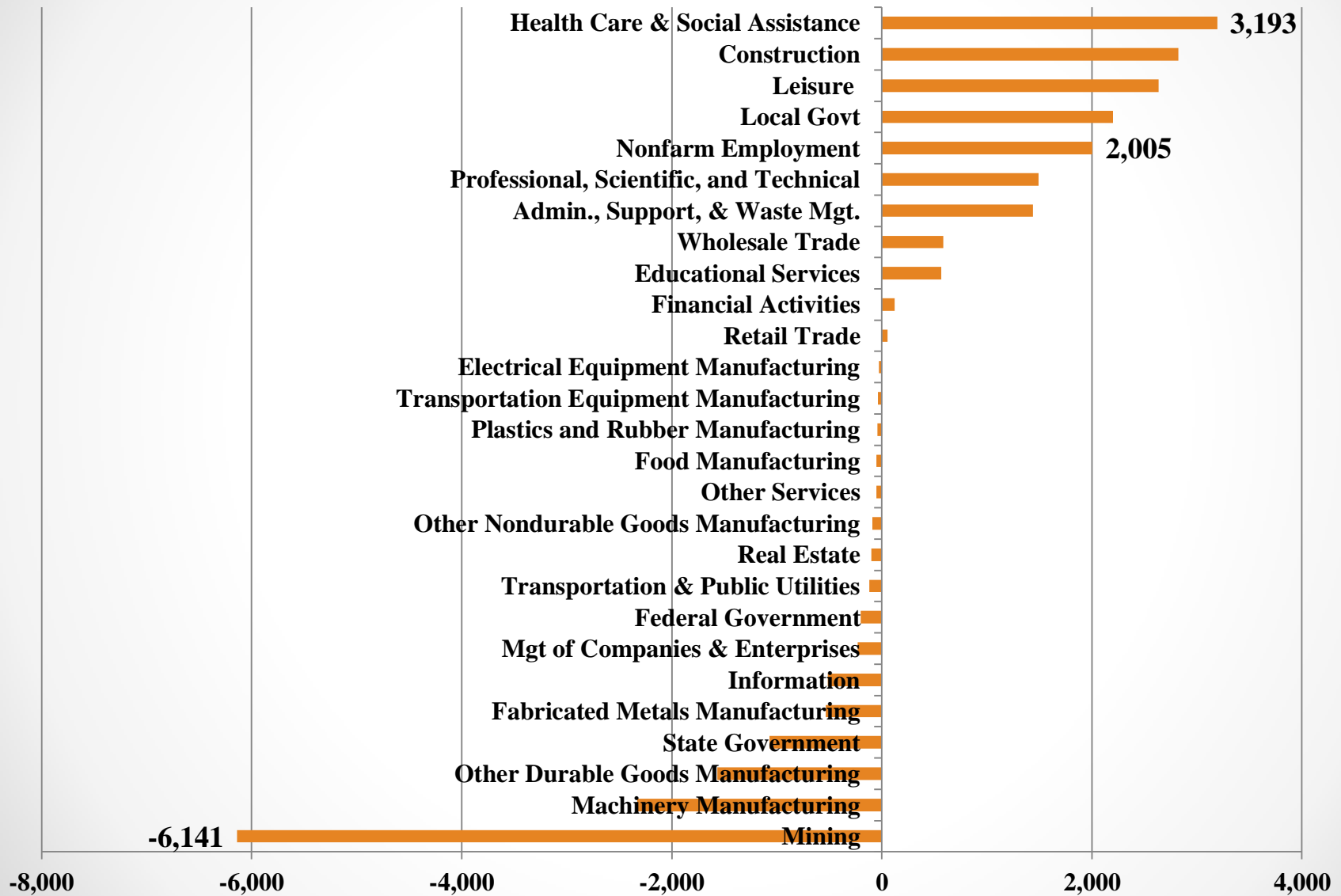


● Red: Energy Dominated; Purple: U.S. Industry Dominated; Blue: No Energy Influence ●

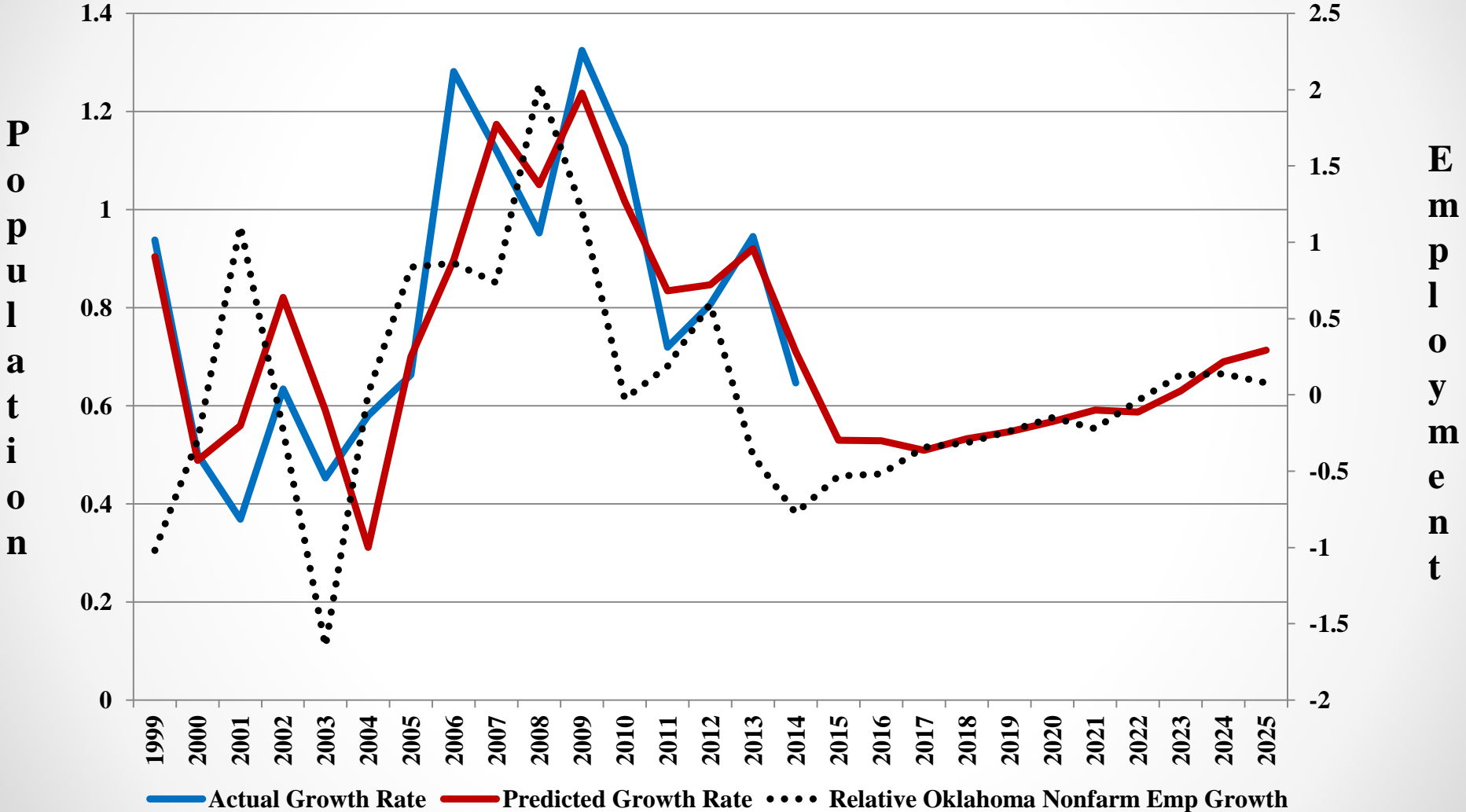
Sector Change in Oklahoma Employment (%): 2016



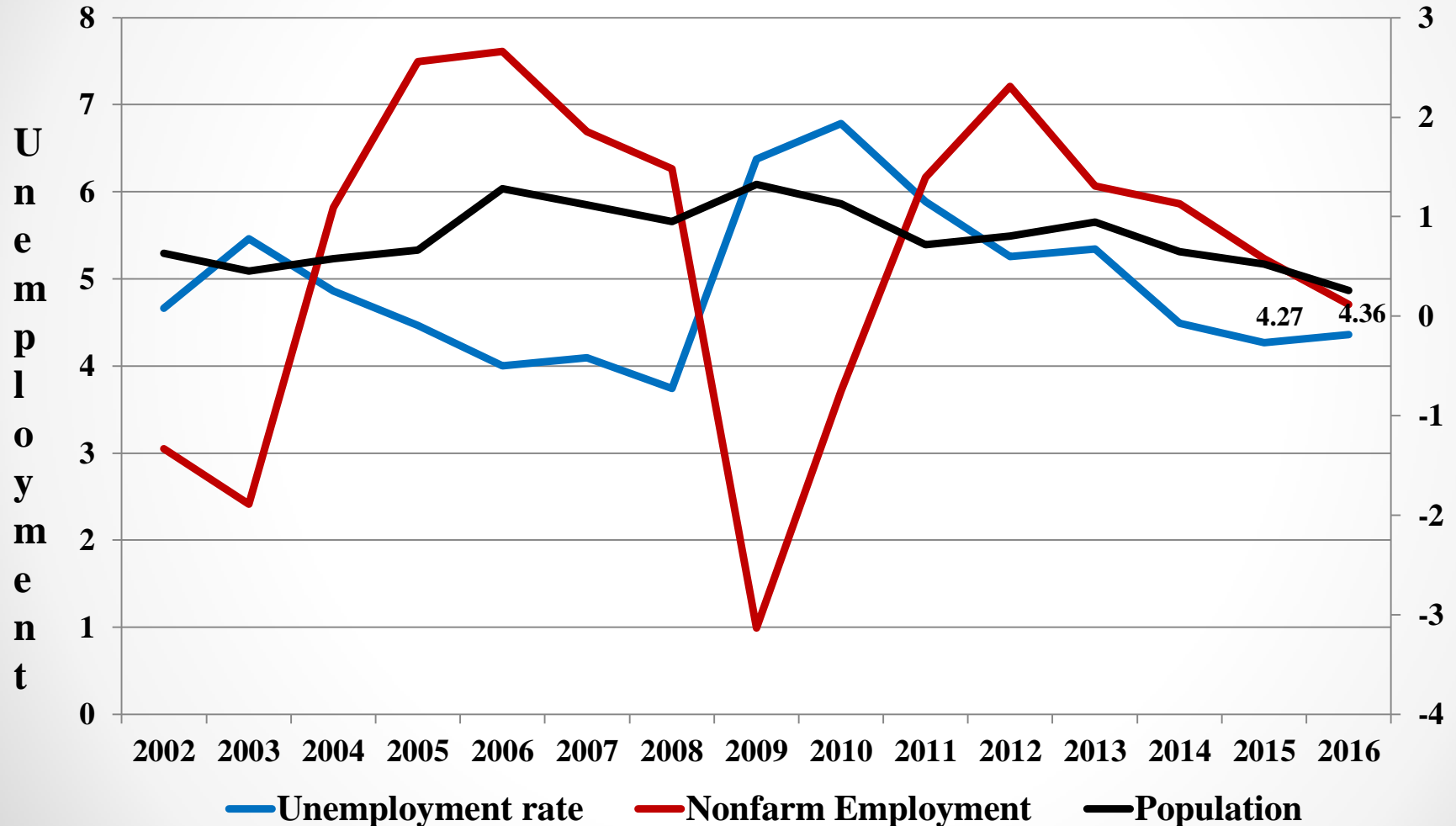
Sector Change in Oklahoma Employment (Jobs): 2016



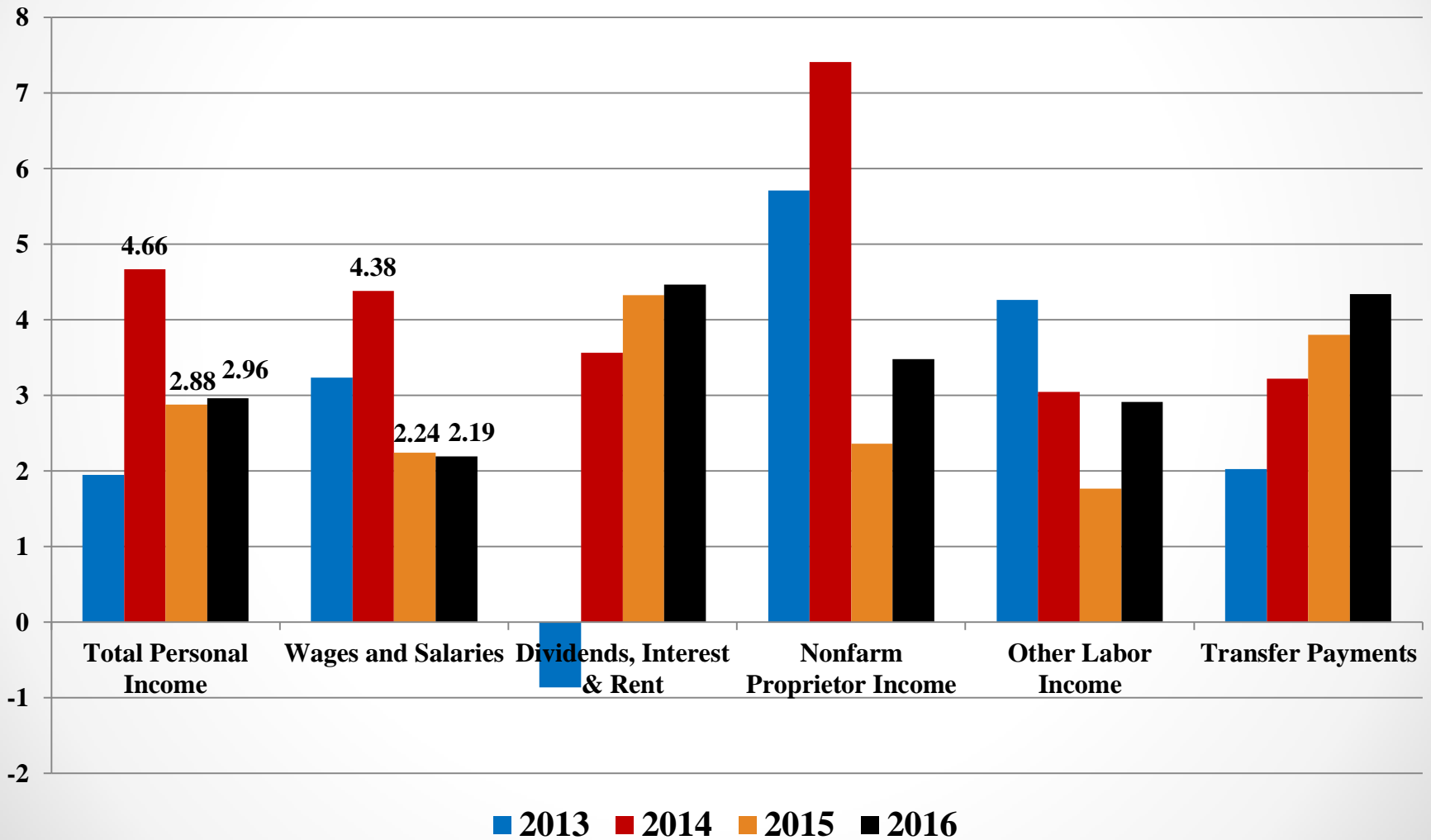
Oklahoma Population Growth Rates (%)



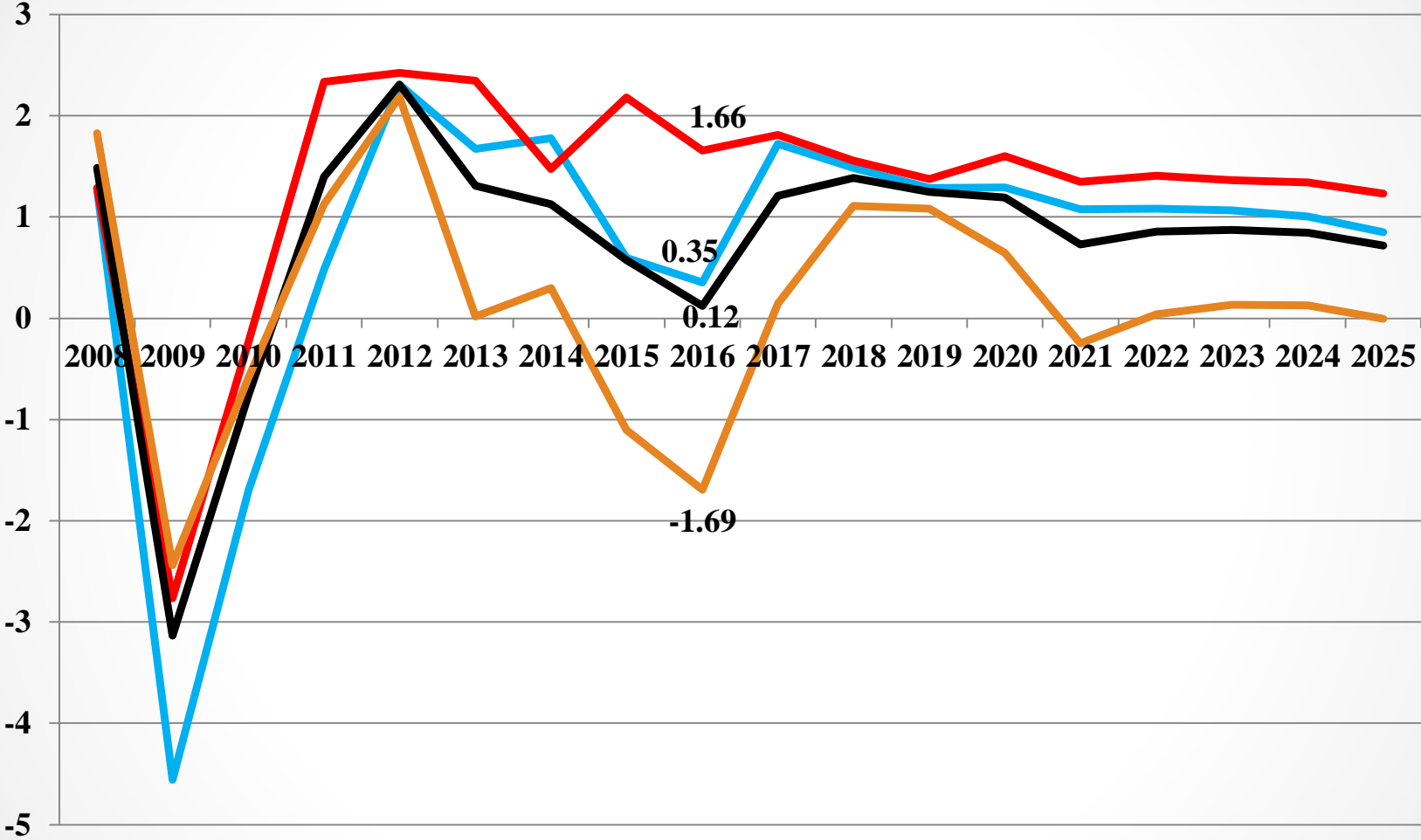
Oklahoma Unemployment Rate and Nonfarm Employment Growth (%)



Oklahoma Personal Income Growth (%)



Oklahoma Total Nonfarm Employment Growth Rates (%)



—Tulsa —OKC —OK —ROS

Thank you for your attention

2016 Oklahoma Economic Outlook Conference

December 8, 2015 | Oklahoma City

Follow us as we live tweet the event:

[@OSUCEPD](https://twitter.com/OSUCEPD) [#2016EconOutlook](https://twitter.com/OSUCEPD)

Look for us on Facebook www.facebook.com/osucepd

Text questions to: 405-515-9618



SPEARS
SCHOOL OF BUSINESS