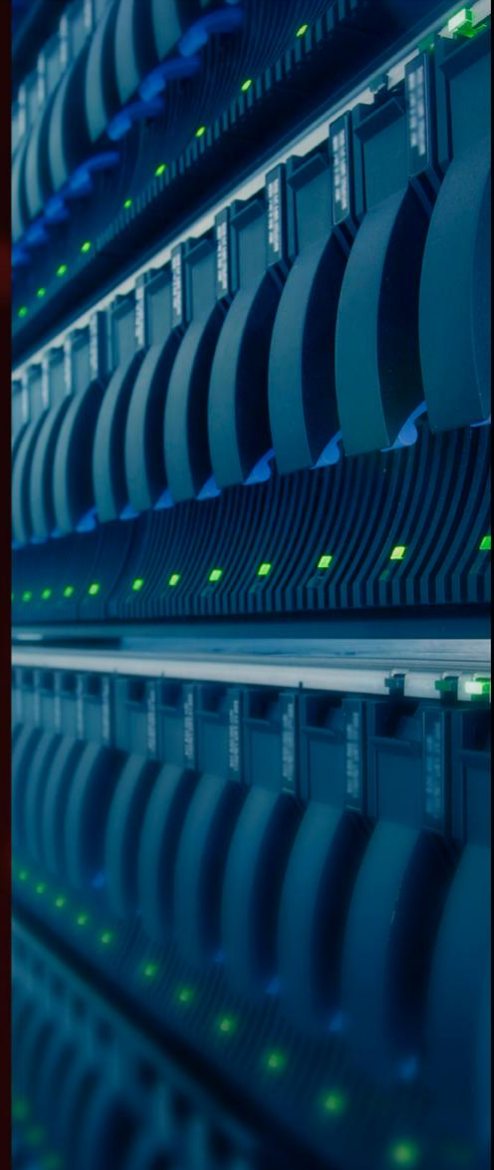
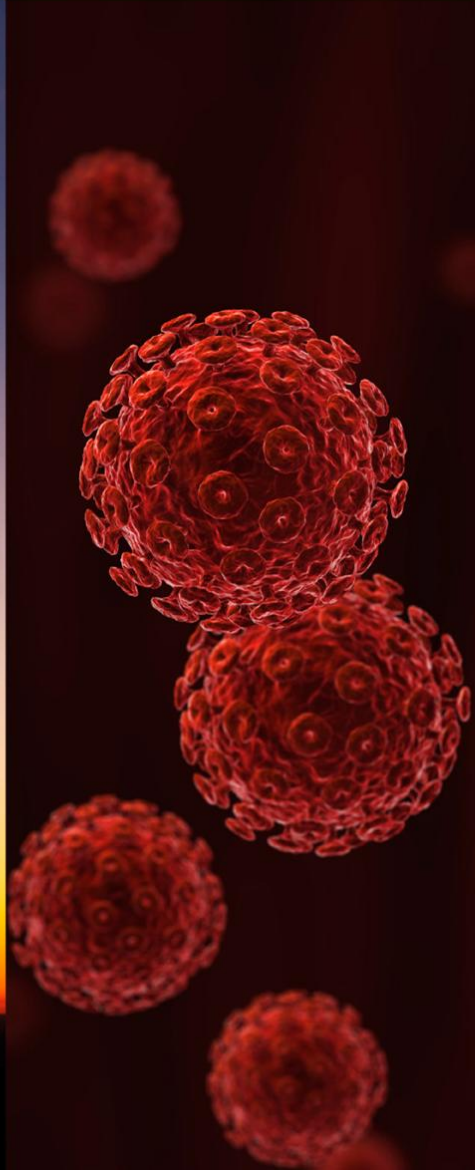


OKLAHOMA

DEPARTMENT OF COMMERCE
OKcommerce.gov



Oklahoma's Economic Trends

Deidre Myers

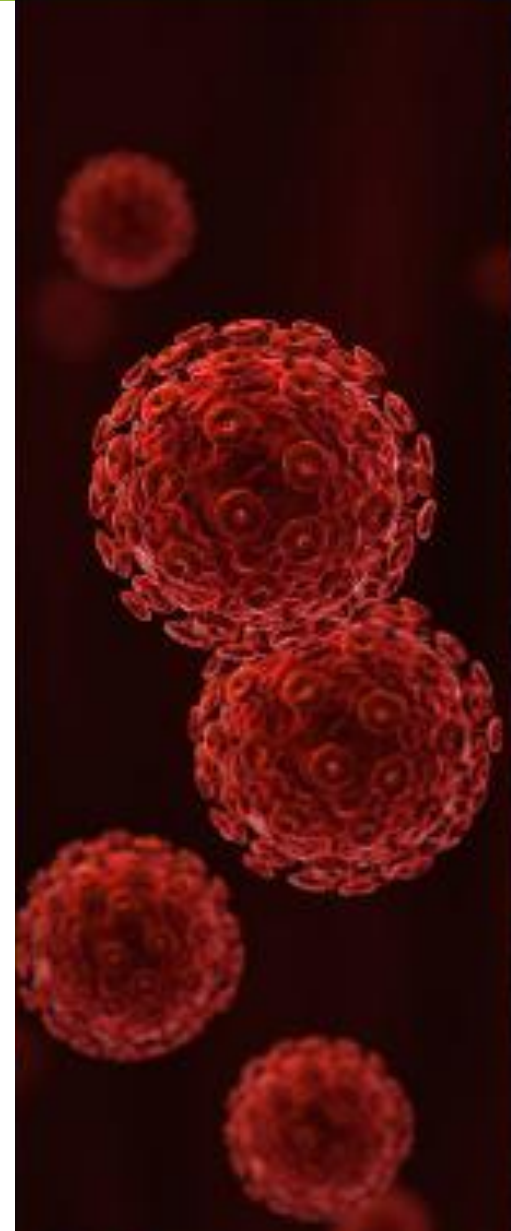
**Director of Research and
Economic Analysis**

November 17, 2009

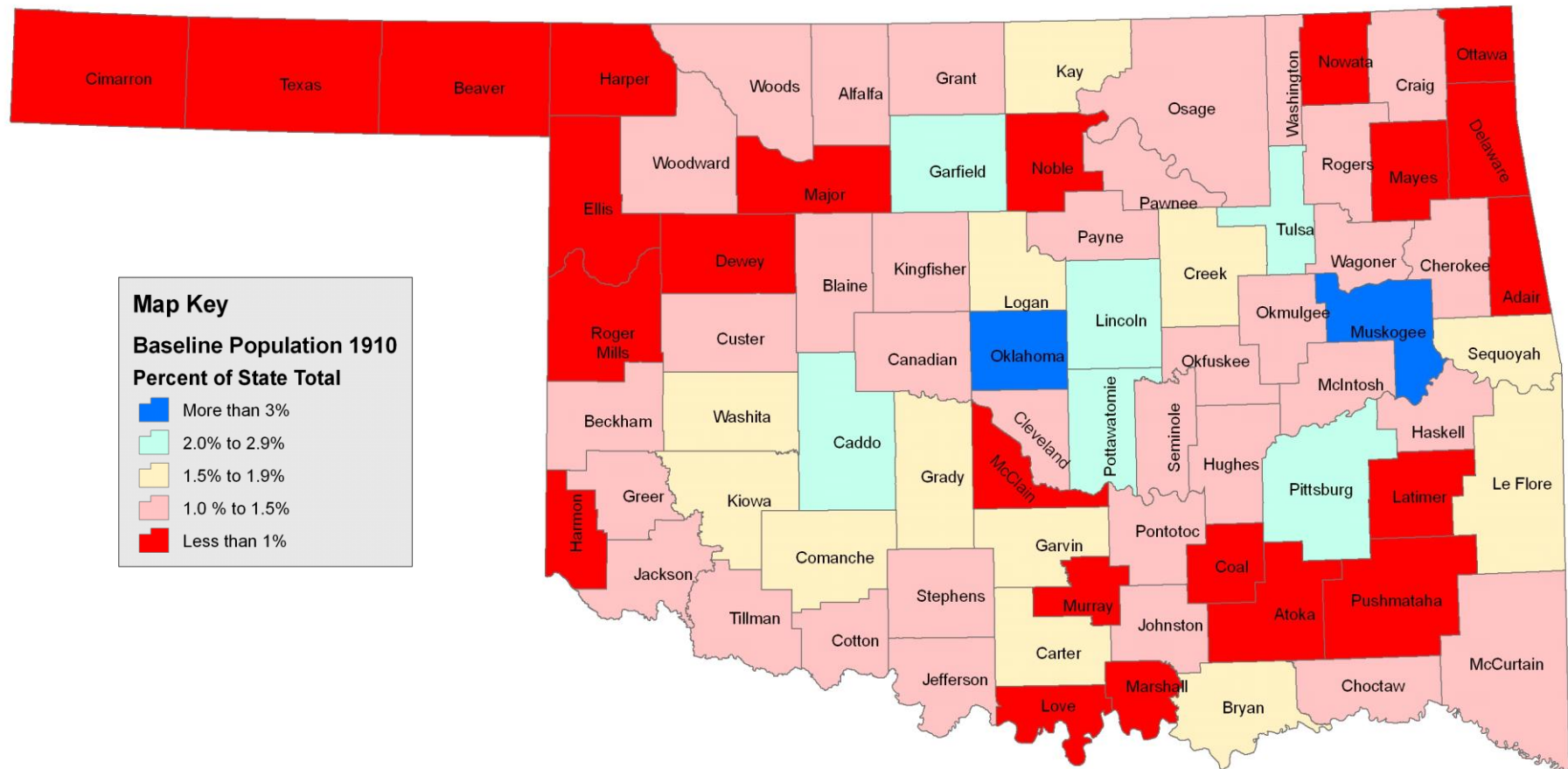


Identified State Trends

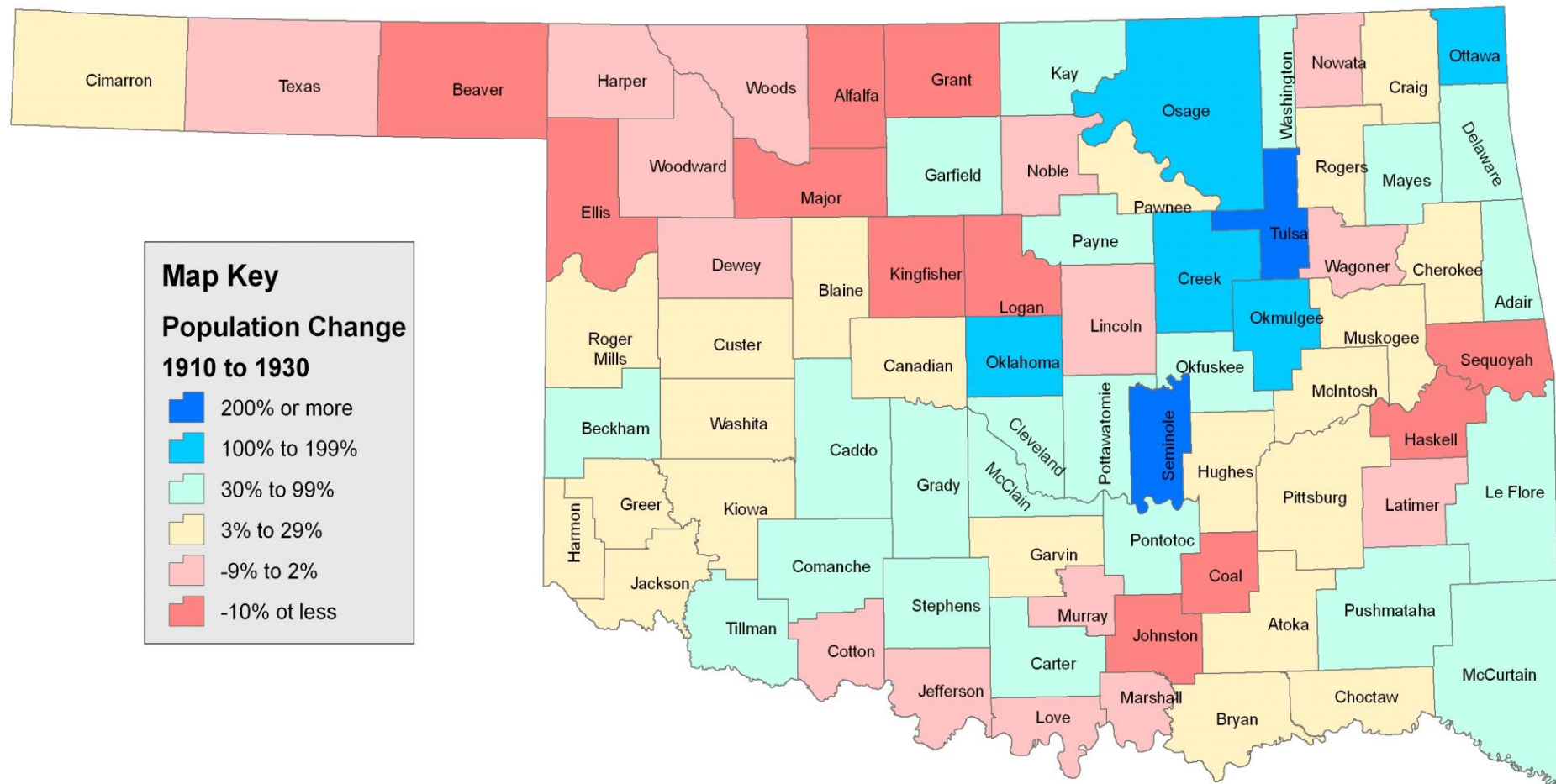
- **Demographics**
- **Employment**
- **Gross Regional Product**
- **Industries**
- **Establishments**



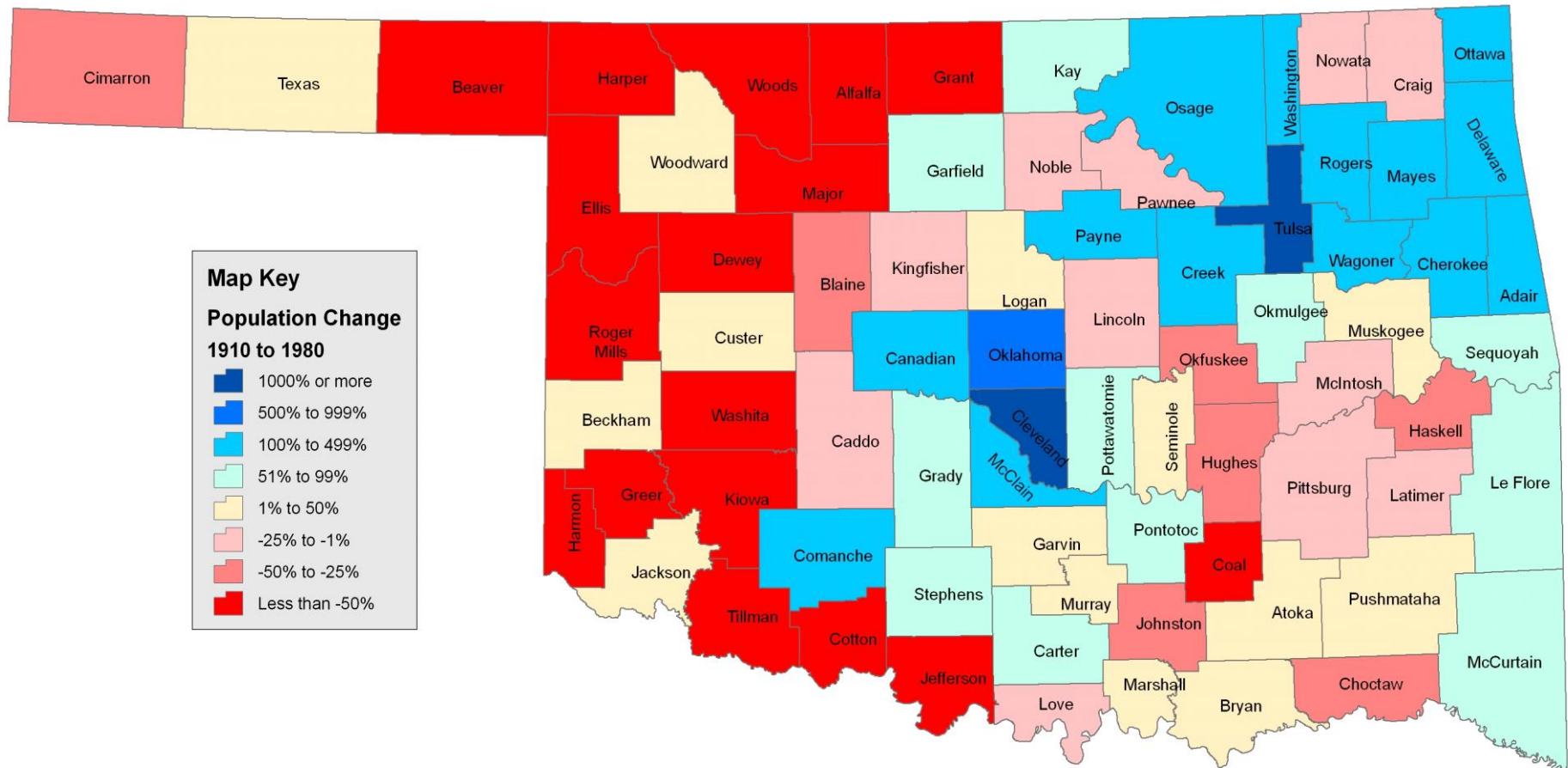
Population Distribution 1910



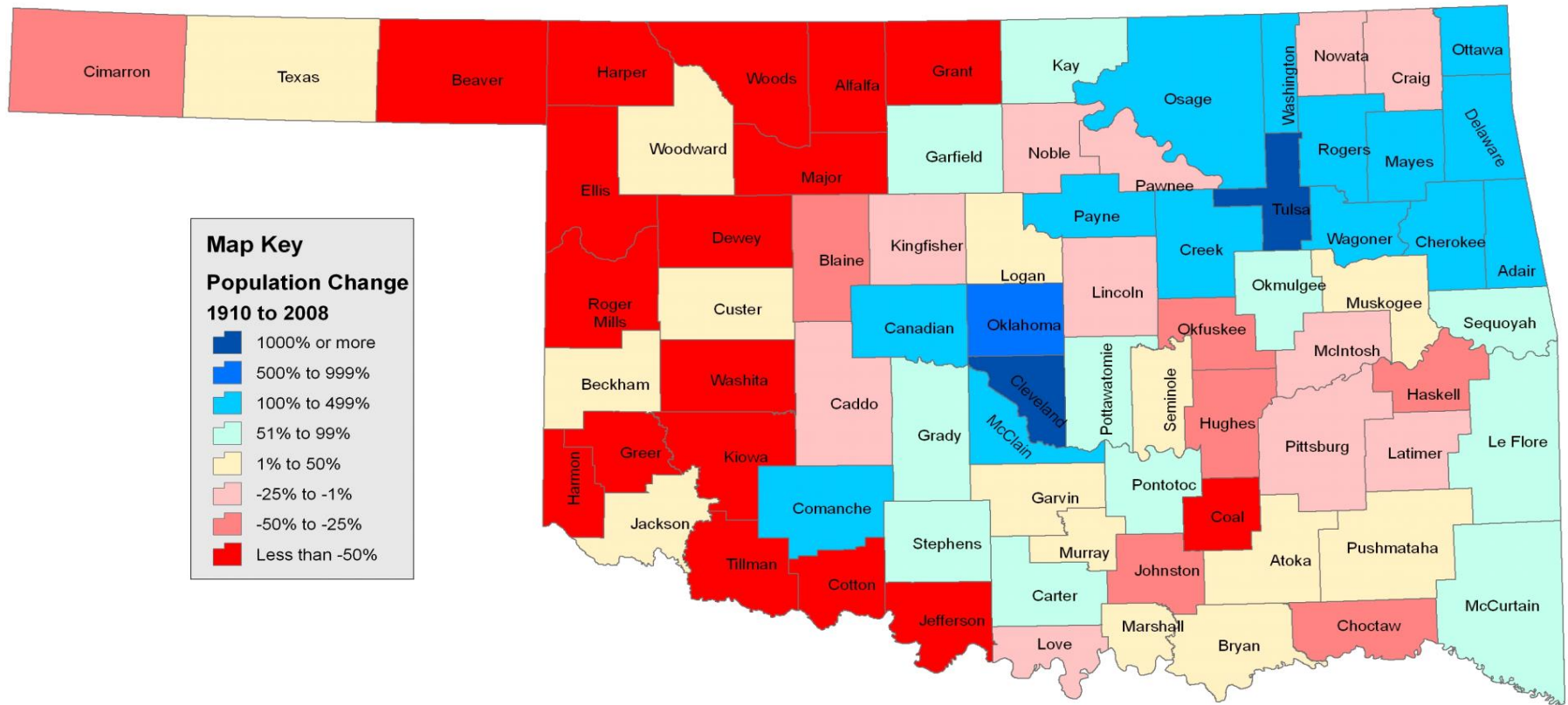
Population Distribution 1910-1930



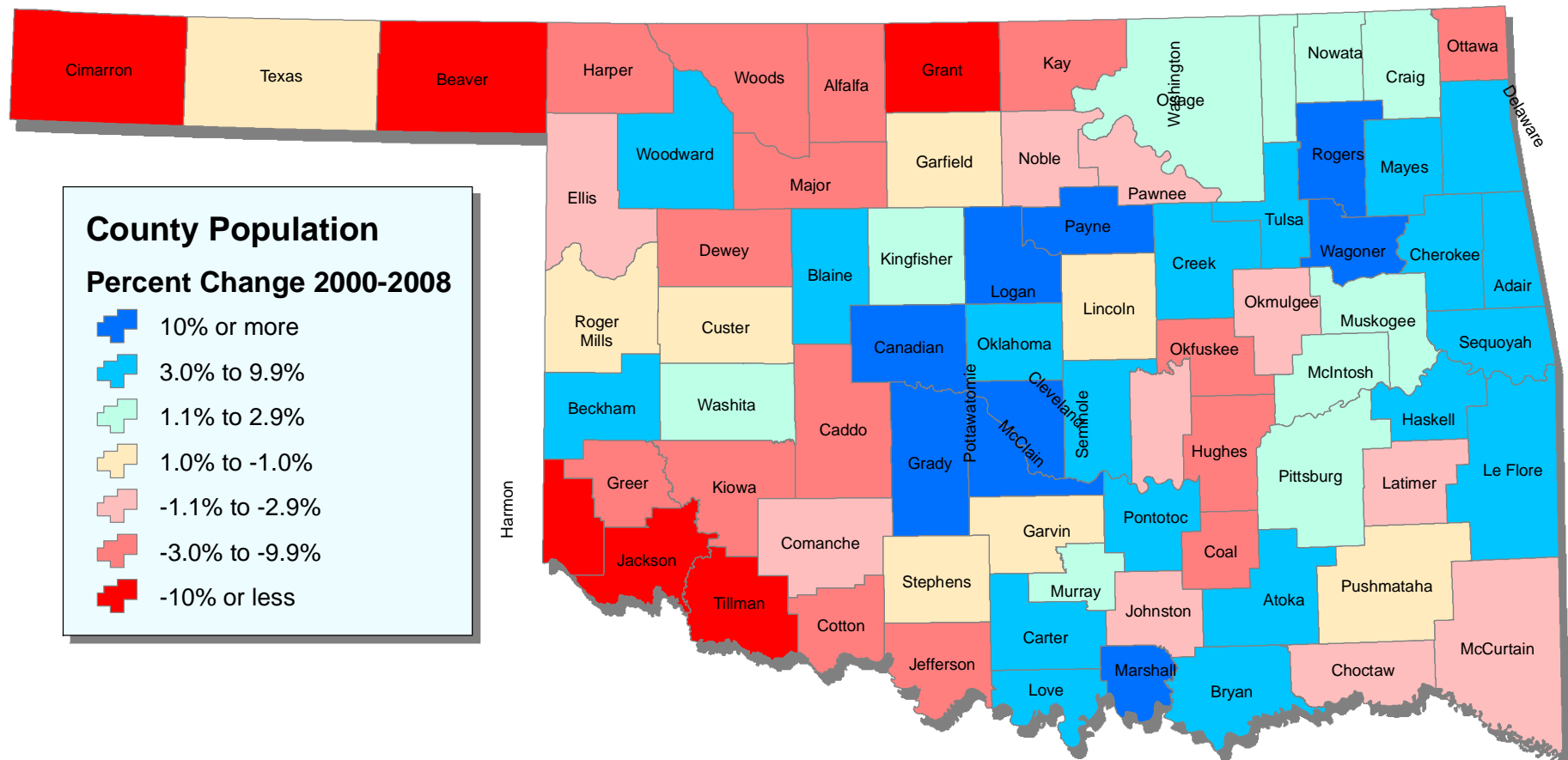
Population Distribution 1910-1980



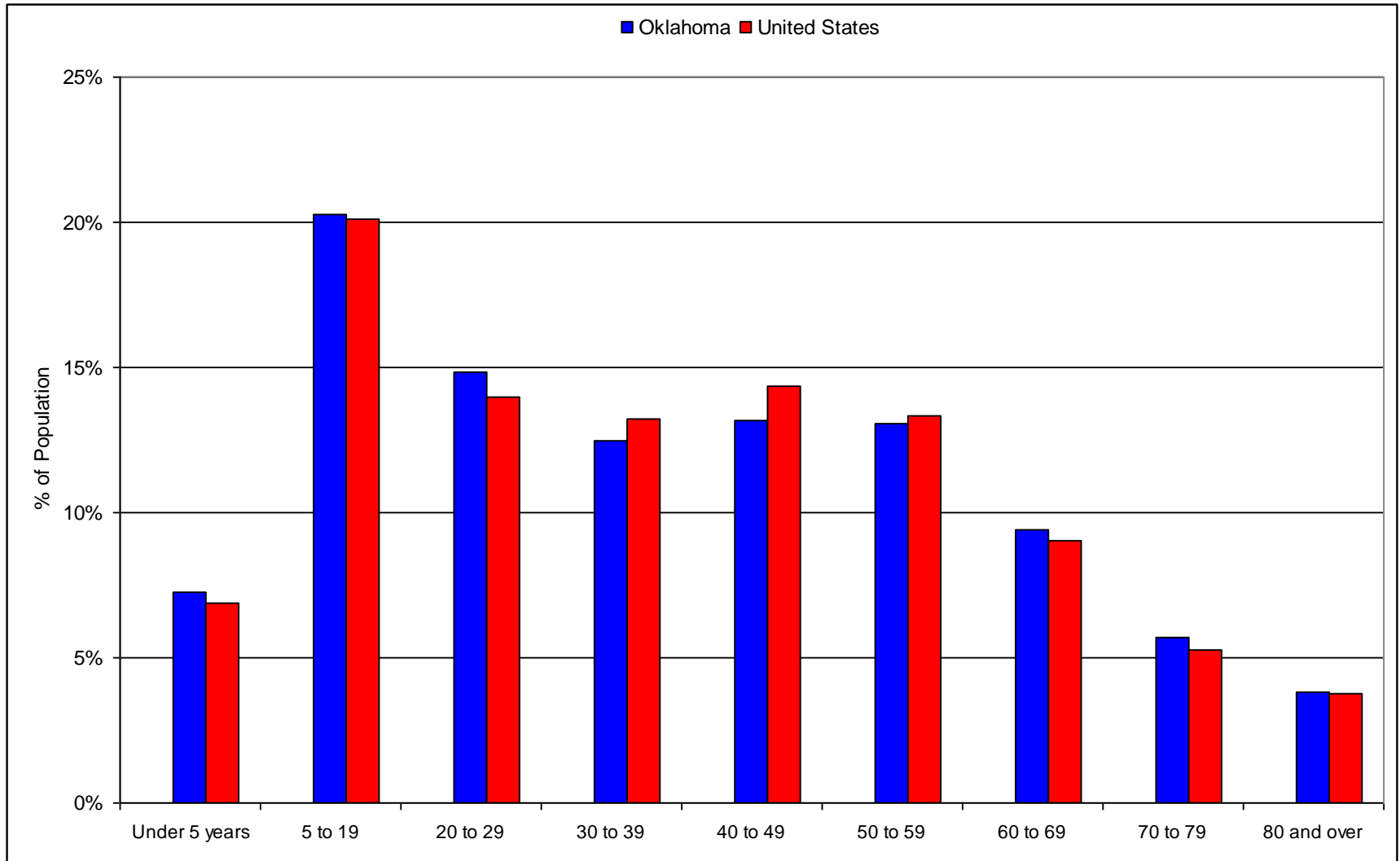
Population Distribution 1910 to 2008



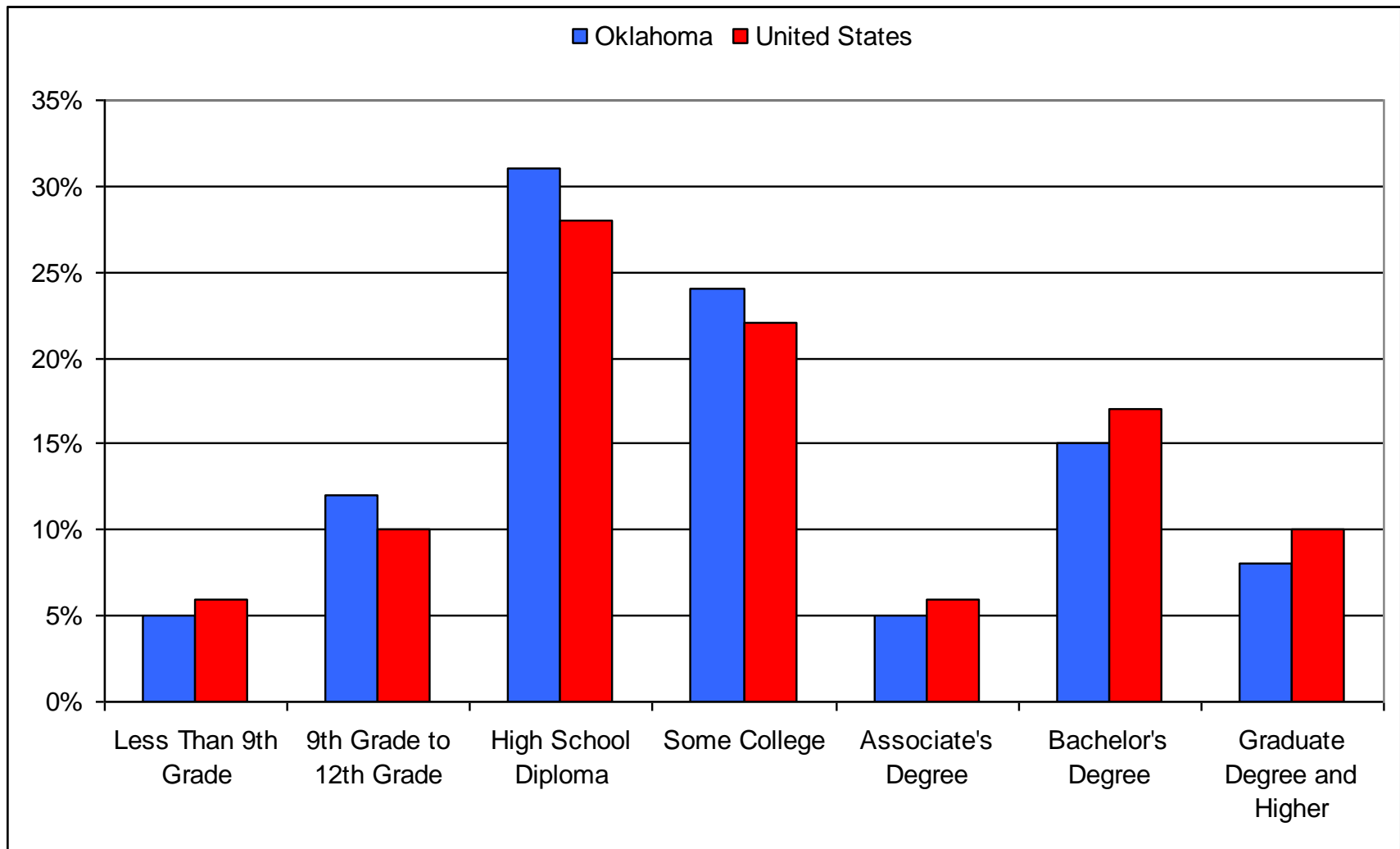
Population Distribution 2000-2008



Age Distribution 2009

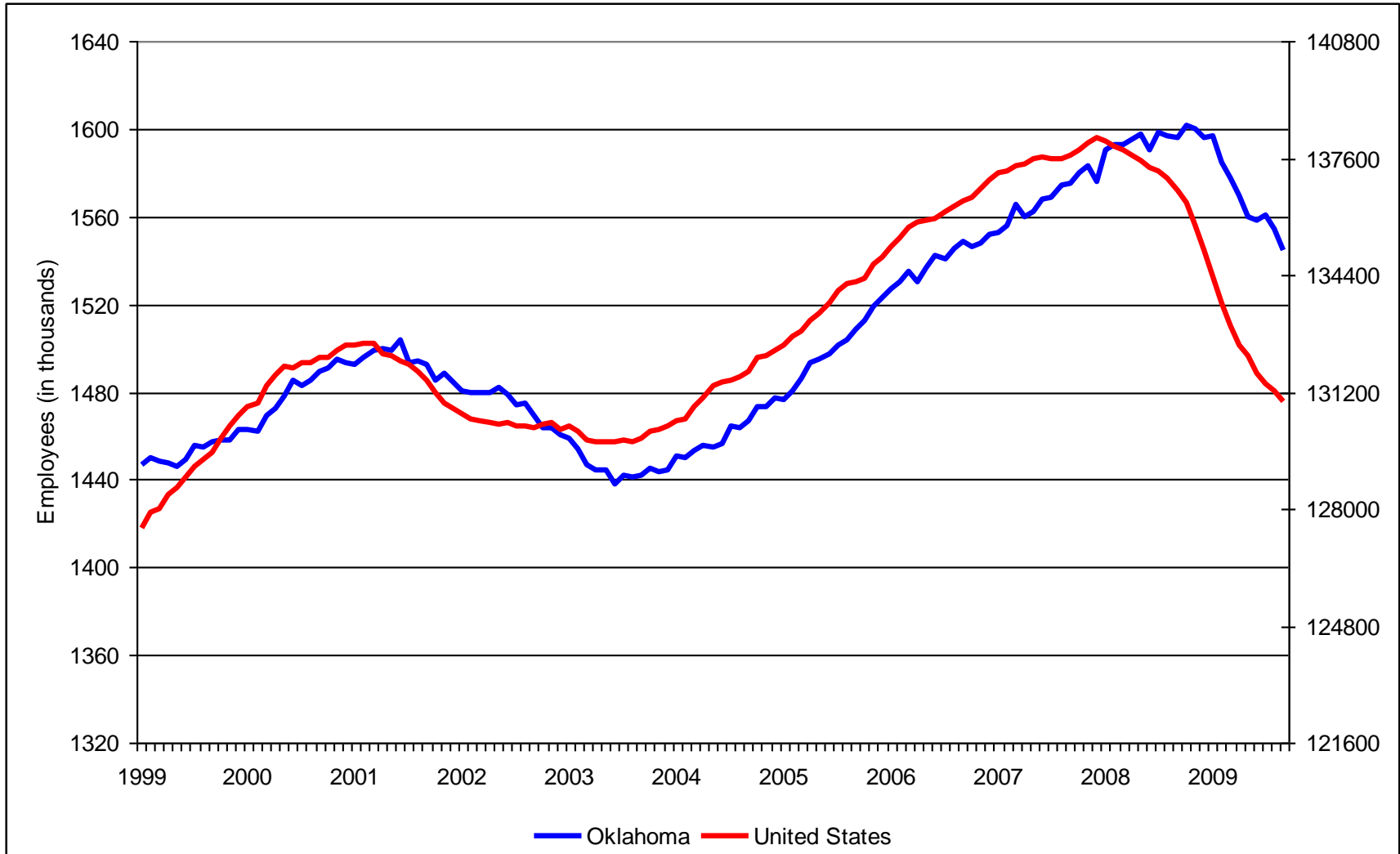


Educational Attainment 2008

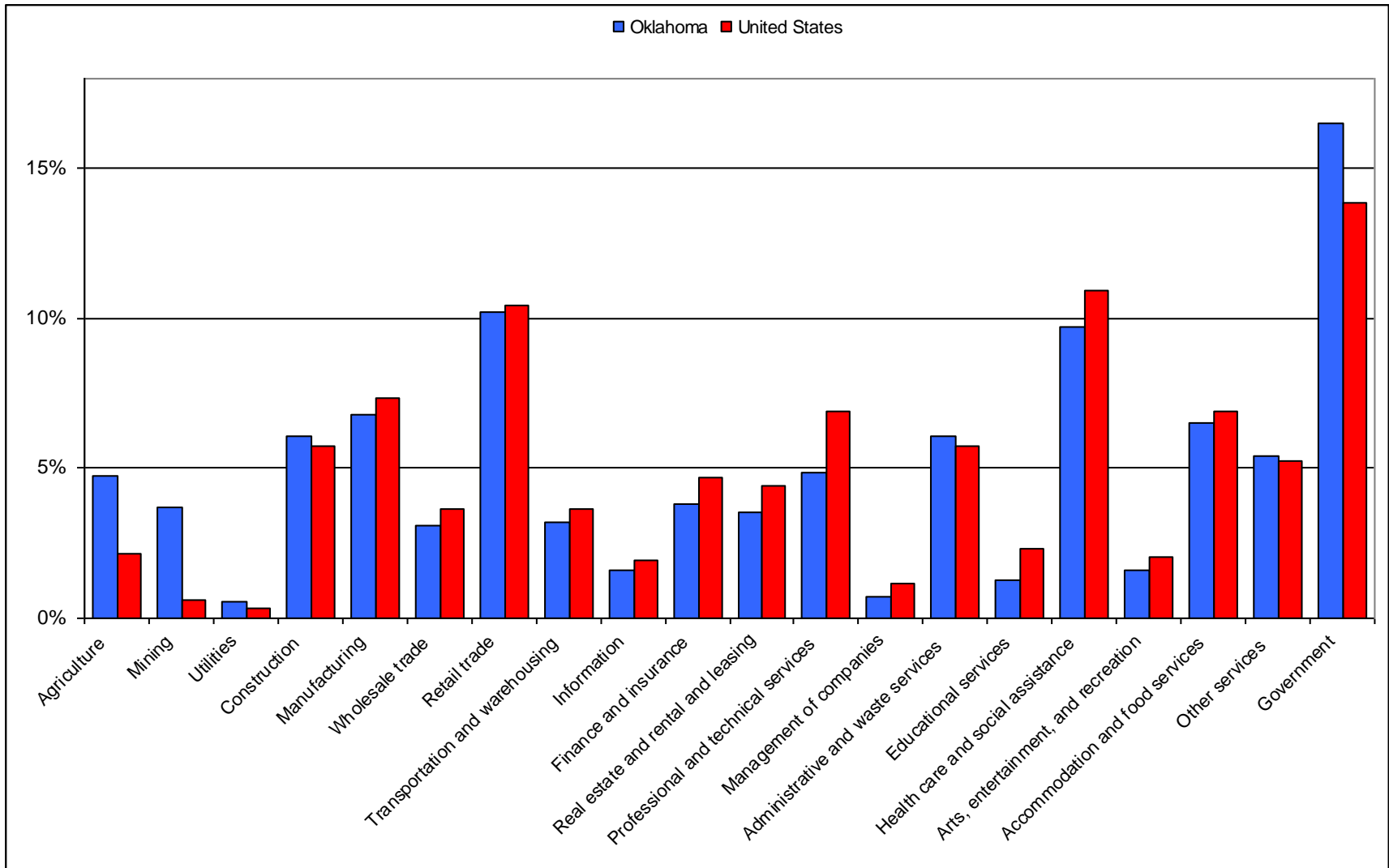


Source: EMSI, Educational Attainment Demographics 2008

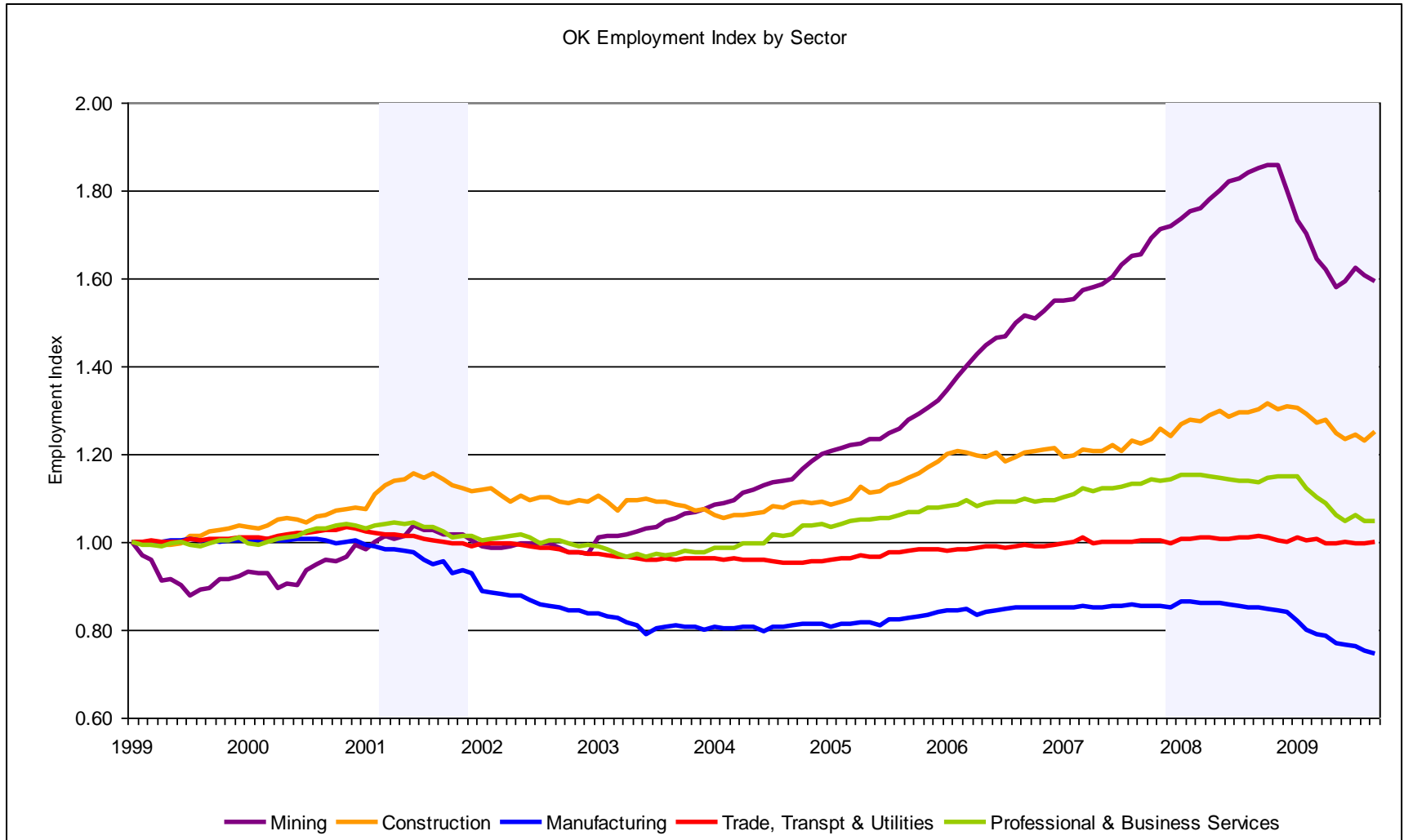
Employment



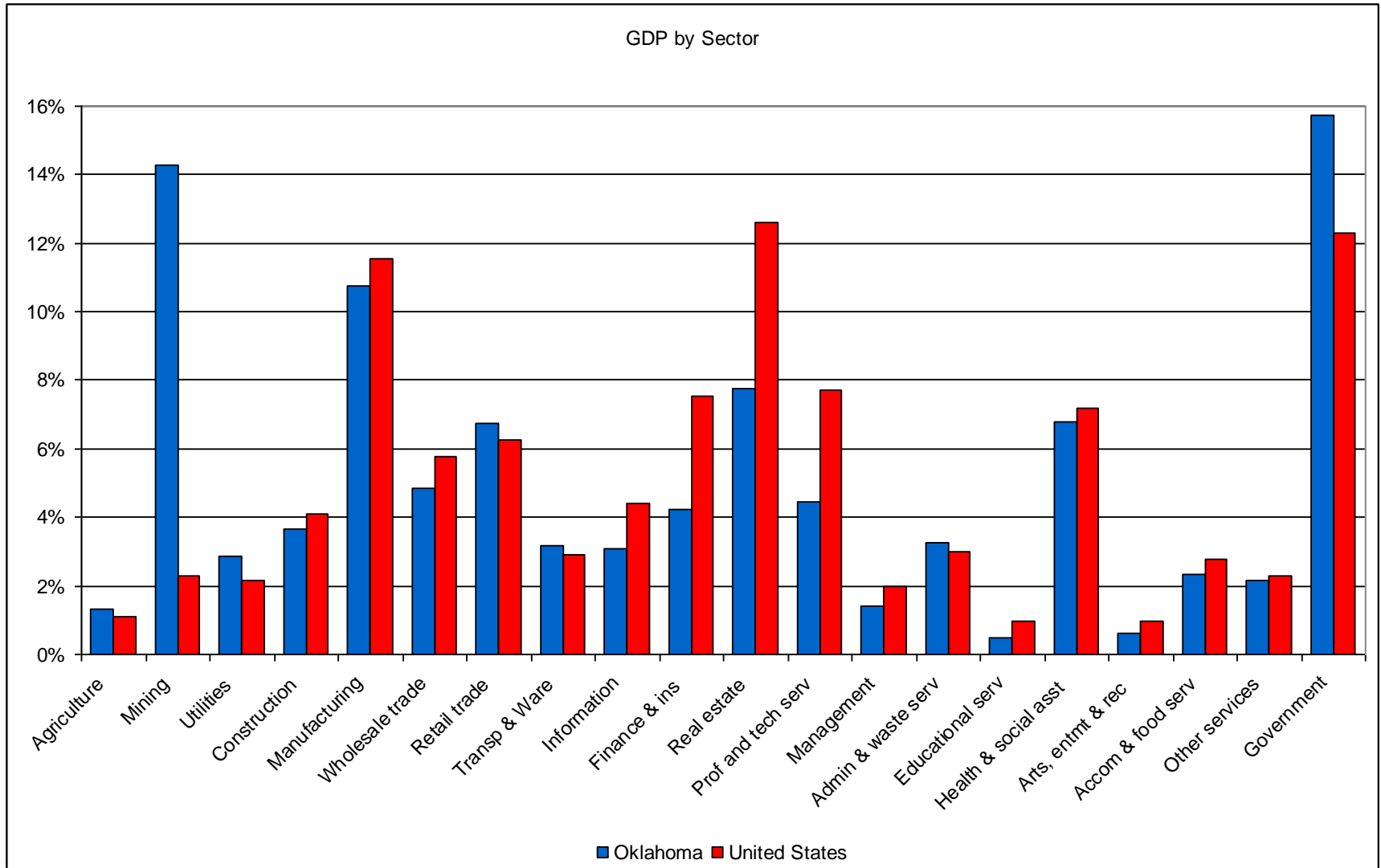
Employment by Sector (2009)



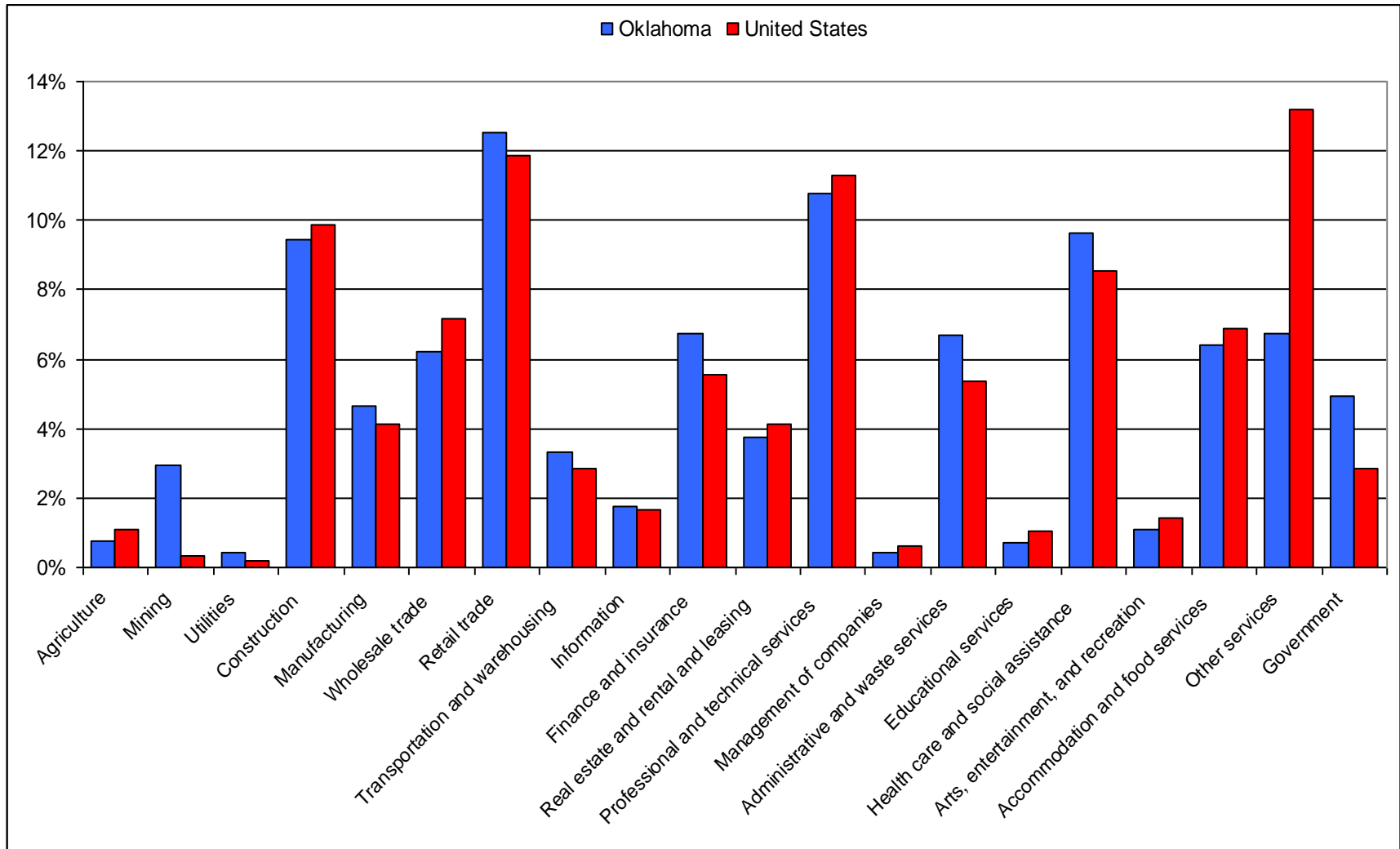
Employment Index by Sector



Industry % of GDP Total (2008)



Establishments by Sector (2008)



State Trends

- Oklahoma's population is migrating towards the metropolitan areas and interstate corridors.
- The regional economies of Sherman-Denison, TX and Fort Smith, AR are growing in Oklahoma.
- In 2008, the private sectors of mining, manufacturing, and real estate compromised a third of the state's GDP.
- By sector, Oklahoma's biggest private employers are retail trade, health care and social assistance, and manufacturing.

