

A faint outline of a world map is visible in the background of the slide.

# Study Abroad Orientation



**CAGLE**  
CENTER *for* ADVANCED GLOBAL  
LEADERSHIP *and* ENGAGEMENT

AT SPEARS BUSINESS

## Short Term Faculty-Led Programs

# Overview

---



**CAGLE**  
CENTER for ADVANCED GLOBAL  
LEADERSHIP *and* ENGAGEMENT  
AT SPEARS BUSINESS

- **Introductions**
- **Behavior & Student Conduct**
- **Cultural Tips**
- **Insurance & Safety**

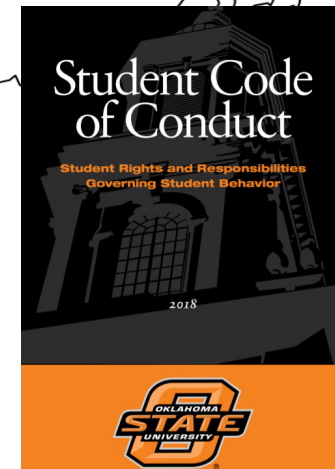
- **Travel Tips**
- **Communication**
- **Money**
- **Pictures**

# Behavior and Conduct



CAGLE  
CENTER for ADVANCED GLOBAL  
LEADERSHIP *and* ENGAGEMENT  
AT SPEARS BUSINESS

- You are the **guest** in a **foreign country**.
  - Please respect their culture.
- You are representing your **Hometown, State, University, and Country!**
- Please follow the OSU Student Conduct you all agreed to online
- **Company Visits and Tours**
  - Be on time! Carry your itinerary at all times.
  - Participate, have fun, and be respectful!
- Attend all sessions and program activities



# Cultural Tips



**CAGLE**  
CENTER for ADVANCED GLOBAL  
LEADERSHIP *and* ENGAGEMENT  
AT SPEARS BUSINESS

- **Don't be critical or judgmental** of differences in the **Host Country**
- **Don't abandon your own culture** in favor of this one
- **Don't be afraid to try new things:**
  - Expand your comfort zone
- Do try to **understand and appreciate the differences**
- Do learn a few phrases



# Mango Languages



**CAGLE**  
CENTER for ADVANCED GLOBAL  
LEADERSHIP *and* ENGAGEMENT  
AT SPEARS BUSINESS

- **Online language-learning system provided by the OSU Library**
- **Download the Mango Languages App**
- **Extremely helpful to know a few words and phrases**



# Insurance



**CAGLE**  
CENTER for ADVANCED GLOBAL  
LEADERSHIP *and* ENGAGEMENT  
AT SPEARS BUSINESS

- **OSU provides insurance to each student studying abroad**

[https://global.okstate.edu/studyabroad/outgoing/beforeduringafter/health\\_safety/insurance.html](https://global.okstate.edu/studyabroad/outgoing/beforeduringafter/health_safety/insurance.html)

- **Insurance Coverage:**
  - **Emergency Medical Services**
  - **Security Evacuation Services**
  - **Repatriation of remains**
- **Reimbursement Method:**
  - Student **pays for the service and keeps the receipt**
  - The insurance will reimburse you after you submit a claim.



# Safety



**CAGLE**  
CENTER for ADVANCED GLOBAL  
LEADERSHIP *and* ENGAGEMENT  
AT SPEARS BUSINESS

- CAGLE will provide you with **Orange Cards** with **local emergency numbers** and **lodging information**.
- Be aware of your surroundings and personal belongings
- **Passport** – make copies and send a scanned copy to a relative
- **Explore and Travel in groups**
- Communicate with leaders if in an emergency situation



# Travel Tips



**CAGLE**  
CENTER for ADVANCED GLOBAL  
LEADERSHIP *and* ENGAGEMENT  
AT SPEARS BUSINESS

- **Packing**

- Pack Light
- Carry on
- Souvenirs
- Added cost of overweight bags

- **Electrical Outlets**

- Adapter-Allows a plug from one country to fit into the outlet of another country
- Converter-Changes the voltage
  - You might need a converter for hair dryer, flat iron, or electric razor





# Travel Tips



**CAGLE**  
CENTER for ADVANCED GLOBAL  
LEADERSHIP *and* ENGAGEMENT  
AT SPEARS BUSINESS

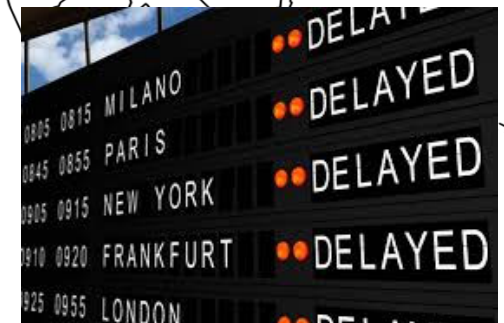
- **Flight Delays/Cancellations**

- **Airline Apps:**

- Track your flight
- Check in
- Electronic Boarding Pass
- Make sure notifications are turned on

- **If your flight is cancelled:**

- Stay calm and be polite
- Talk to the airline host/hostess immediately
- Contact your travel agent if you used one
- Keep **CAGLE** and your **family** informed of changes



# Communication



**CAGLE**  
CENTER for ADVANCED GLOBAL  
LEADERSHIP *and* ENGAGEMENT  
AT SPEARS BUSINESS

## International Phone Plans:

- **Verizon International Travel Pass-**
  - \$5 a day in Mexico and \$10 a day in other countries
  - same usage on talk, text and data as if you were using your domestic allowances. Only charged days you use it.
- **AT&T International Day Pass**
  - \$10 a day, Unlimited texting, talk and data.
  - Only charged the days you are using it.
  - Mexico has no additional charges, plan is used like in US- on certain plans.
  - Ex. AT&T Unlimited Plus and Choice plans.
- **Sprint Global Roaming**
  - FREE, Unlimited data & text, 2 GB and calls 20 cents per minute
- **T-Mobile One**
  - \$25/month unlimited talk, text, and data, in flight texting and 1 hr data,
  - Hot spot, stream unlimited, Netflix at no extra charge, & 5GB 4G LTE data (Mexico included)



# Communication



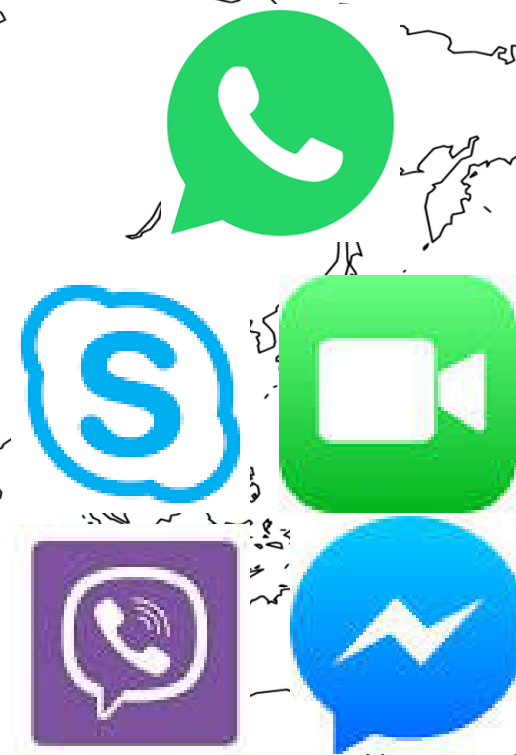
CAGLE  
CENTER for ADVANCED GLOBAL  
LEADERSHIP *and* ENGAGEMENT  
AT SPEARS BUSINESS

- **Free Apps for travel**

- WhatsApp for texting, video and voice call via Wi-Fi
- Viber for calling to landlines via Wi-Fi
- Skype/FaceTime for video and voice call via Wi-Fi

- **Call or Email Home on Arrival**

- See your handbooks/orange cards on how to dial to the U.S. it will vary depending on the country you will be visiting.
- Your parents want to hear from you and ensure you arrived safely.



# Money



**CAGLE**  
CENTER for ADVANCED GLOBAL  
LEADERSHIP *and* ENGAGEMENT  
AT SPEARS BUSINESS

- Inform your **bank/credit card carrier** prior to your departure so your cards will not be denied.
  - **Visa and MasterCard** are widely accepted
- It is important to know the **Exchange Rate** of the currency you will use overseas.
- You can exchange currency for the best rate at **ATM's**.
  - Other options are **banks and airport exchange booths**.



# Pictures and Videos

Share photos and videos with us!

We will use them for future marketing.

- **Social Media**

- Instagram [@OSU CAGLE](https://www.instagram.com/osucagle)
- Twitter [@OSU CAGLE](https://twitter.com/osucagle)
- Facebook [CAGLE Study Abroad](https://www.facebook.com/CAGLEStudyAbroad)

Hashtags:

- #osucagle
- #spearsbusiness
- #okstate
- #studyabroad
- #orangeadventure
- #gopokes



# CAGLE Scholars



**CAGLE**  
CENTER for ADVANCED GLOBAL  
LEADERSHIP *and* ENGAGEMENT  
AT SPEARS BUSINESS

## Cagle Scholarship Recipients – Expectations

- Assisting CAGLE with promotional activities
- Types of events may include:
  - On campus and class announcements
  - Lights on Stillwater
  - CAGLE Info Nights
  - Entrepreneurship Experience Expo
  - Study Abroad Fair
  - Visiting Greek Houses for program promotion
  - CAGLE Global and Cultural events

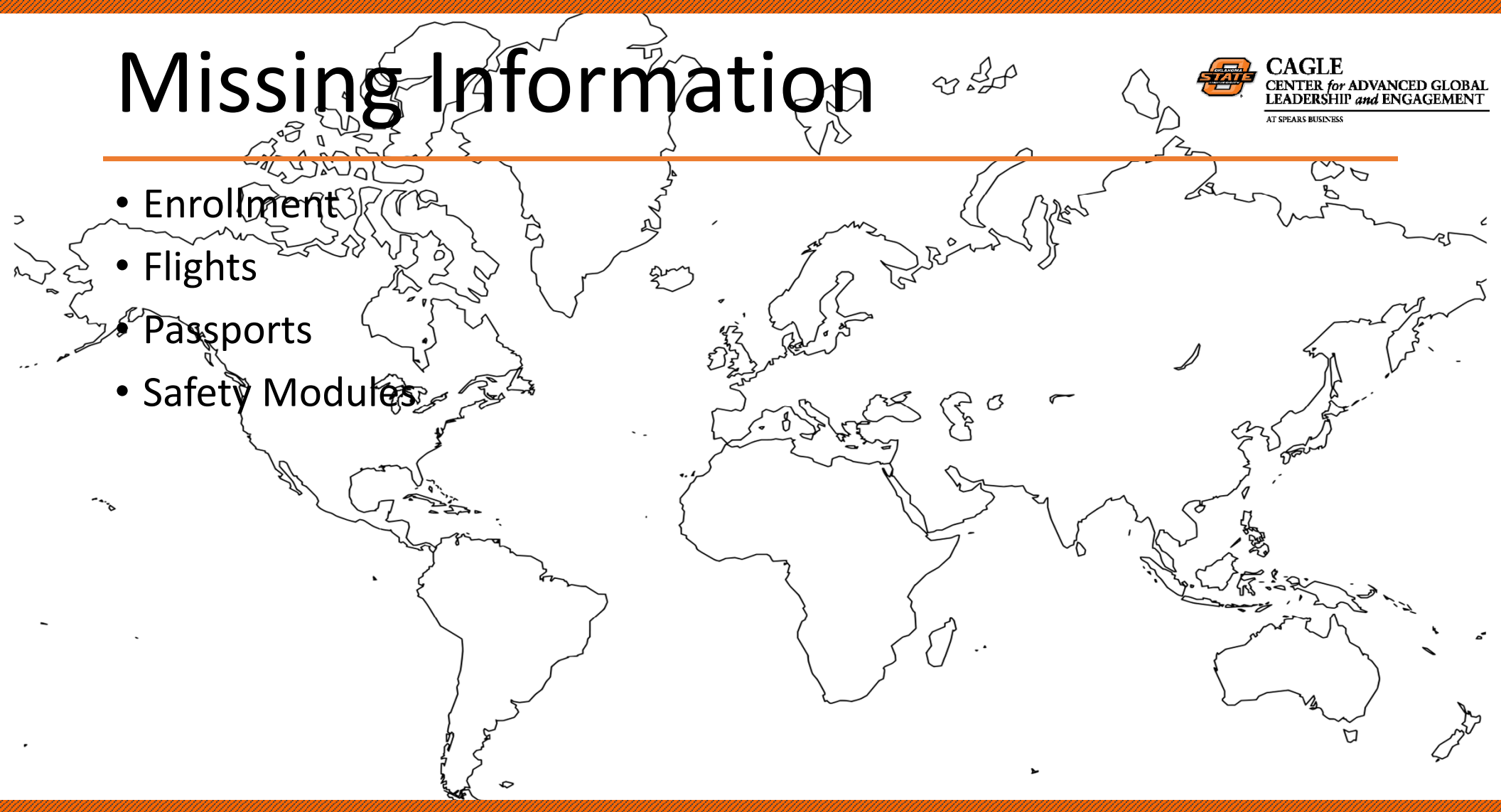
# Missing Information

---



**CAGLE**  
CENTER for ADVANCED GLOBAL  
LEADERSHIP *and* ENGAGEMENT  
AT SPEARS BUSINESS

- Enrollment
- Flights
- Passports
- Safety Modules





**CAGLE**  
CENTER for ADVANCED GLOBAL  
LEADERSHIP *and* ENGAGEMENT  
AT SPEARS BUSINESS

---

# Questions?

A black outline map of the world is centered on the page, showing the continents of North America, South America, Europe, Africa, Asia, and Australia. The map is overlaid with a horizontal orange line that passes through the word 'Questions?'.