



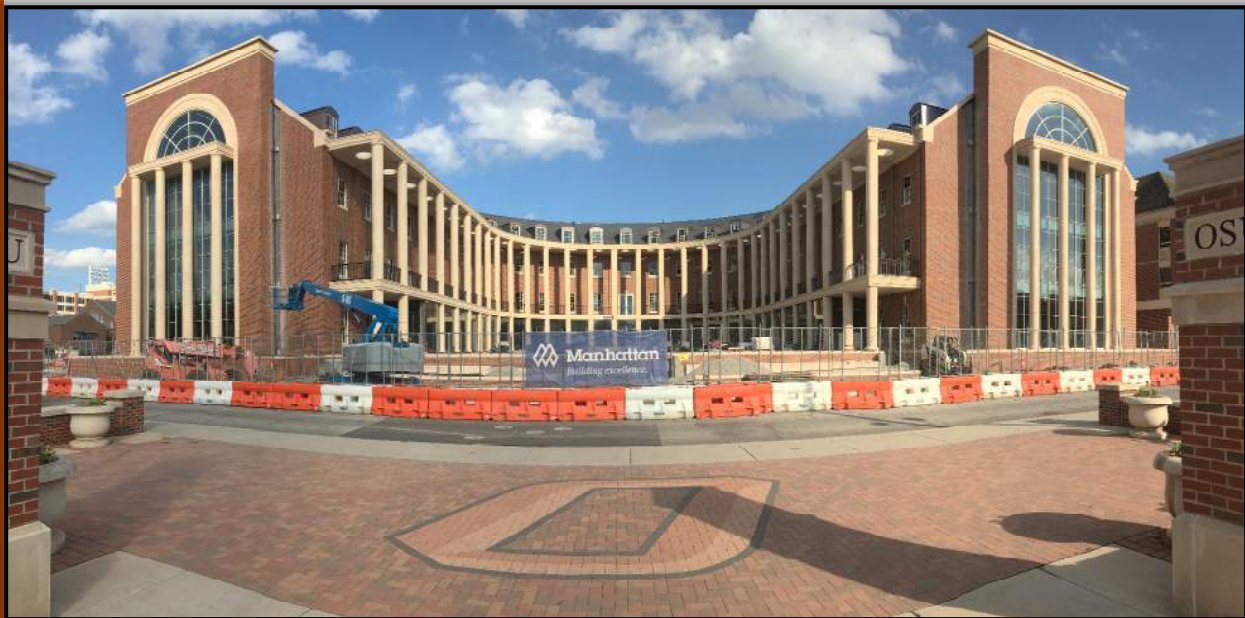
OSU SPEARS SCHOOL OF BUSINESS BUILDING

OKLAHOMA STATE UNIVERSITY



SEPTEMBER PROGRESS REPORT

9.30.2017



MONTHLY OVERVIEW

- ◆ START WATERPROOFING OF THE LOGGIA BALCONY
- ◆ INSTALLATION OF VANITIES AND SINKS
- ◆ INSTALL WOOD CEILINGS IN LENORMAN CLASSROOM
- ◆ CONT. GFRC INSTALLATION
- ◆ STARTED WALL VINYL ON 2ND FLOOR
- ◆ CONT. INSTALL OF EXTERIOR DOORS
- ◆ POLISH TERRAZZO ON 2ND FLOOR
- ◆ CONT. EXTERIOR CONCRETE
- ◆ CONT. INSTALLATION OF FRAMING FOR ELEVATED DECKS

MONTHLY PROGRESS REPORT

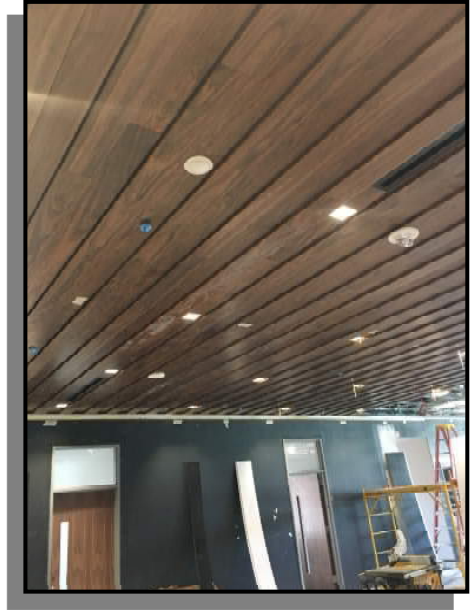
PROGRESS REPORT: IN SEPTEMBER, WE CONTINUE TO MAKE PROGRESS ON THE EXTERIOR OF THE BUILDING POURING MORE SIDEWALKS AND MORE LIGHT POLE BASES AS WELL AS POURING A LARGE SECTION OF THE NEW PARKING LOT. WE HAVE FURTHERED THE PLAZA WORK BY LEVELING THE PLAZA DECK WITH SAND AND WE HAVE LAID ALL OF THE YANKEE HILL PAVERS FOR THE PLAZA. WE HAVE ALSO ALMOST FINISHED THE INSTALLATION OF THE EXTERIOR DOORS. IN THE MYER'S SUITE WE BEGAN HANGING THE WOOD CEILING AS WELL AS INSTALLING THE GLASS SHOES FOR THE MYER'S CONFERENCE ROOM. THE TERRAZZO FLOORING HAS BEEN POLISHED IN THE BASEMENT AHEAD OF WALL VINYL BEING INSTALLED. THE BASEMENT CLASSROOMS HAVE BEEN FINISHED BEING DECKED AS WELL AS THE DECKING BEGGINING FOR THE LENORMAN CLASSROOM.

AS CONSTRUCTION CONTINUES, MANHATTAN WILL ISSUE MONTHLY PROGRESS REPORTS THROUGHOUT THE CONSTRUCTION PROCESS. TYPICALLY, THESE REPORTS ARE GENERATED AND TRANSMITTED ON THE LAST DAY OF EACH MONTH. THESE REPORTS ARE MEANT TO SERVE AS A TOOL FOR OSU LONG RANGE FACILITIES PLANNING TO DOCUMENT PRODUCTION AND KEEP INTERESTED PARTIES UPDATED WITH PROGRESS WHOM WOULD NOT OTHERWISE BE INVOLVED ON A DAILY BASIS.

MANHATTAN IS PROUD TO PARTNER WITH OSU LONG RANGE FACILITIES PLANNING, SPEARS SCHOOL OF BUSINESS, AND ELLIOT AND ASSOCIATES ON THIS PROJECT. ISSUE NO.29



CEILING

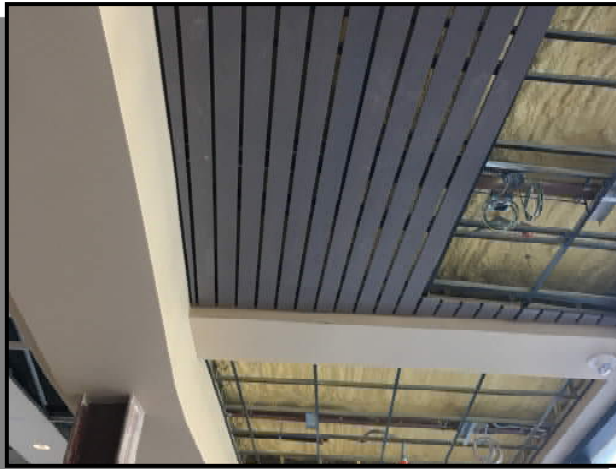


PICTURED ABOVE:

3RD FLOOR MYER'S SUITE CEILING

PICTURED LEFT:

1ST FLOOR SOUTH LOGGIA CEILING



PICTURED BOTTOM LEFT:

1ST FLOOR RIATA LIGHTING





EXTERIOR IMPROVEMENTS



PICTURED ABOVE:
EXTERIOR SE SITE GRADING



PICTURED RIGHT:
PLAZA PAVER INSTALLATION

PICTURED BELOW:
PLAZA PLANTER BED CAST STONE





EXTERIOR IMPROVEMENTS



PICTURED ABOVE:

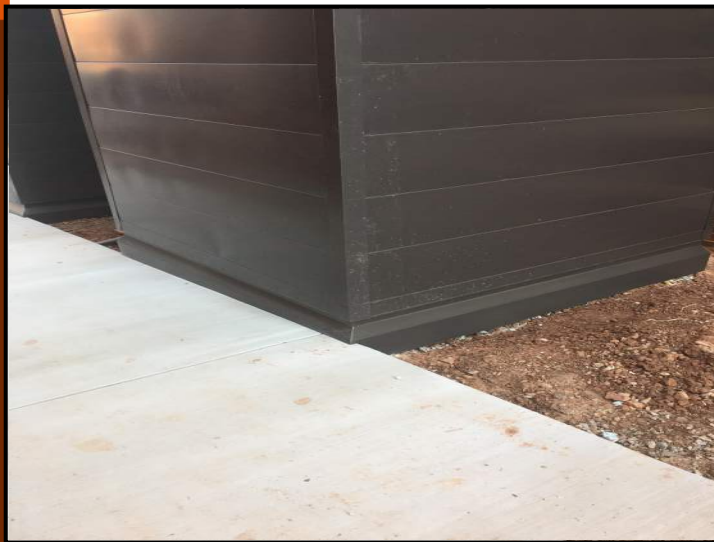
PAVING OF EAST SIDE PARKING LOT

PICTURED RIGHT:

SLOT WINDOW REWORK FROM 3RD
FLOOR

PICTURED BELOW:

SOUTH SIDE AIR TOWER METAL
PANELING





INTERIOR FRAMING, AND FINISHES



PICTURED ABOVE:
FRAMING OF LENORMAN DECKING

PICTURED LEFT:
1ST FLOOR GLASS INSTALLATION FOR
WATSON TRADING FLOOR



PICTURED BELOW LEFT:
4TH FLOOR CONFERENCE GLASS



FLOORING



PICTURED ABOVE:

1ST FLOOR TERRAZZO PREP

PICTURED RIGHT:

1ST FLOOR KEYSTONE ROOM
TRAVERTINE



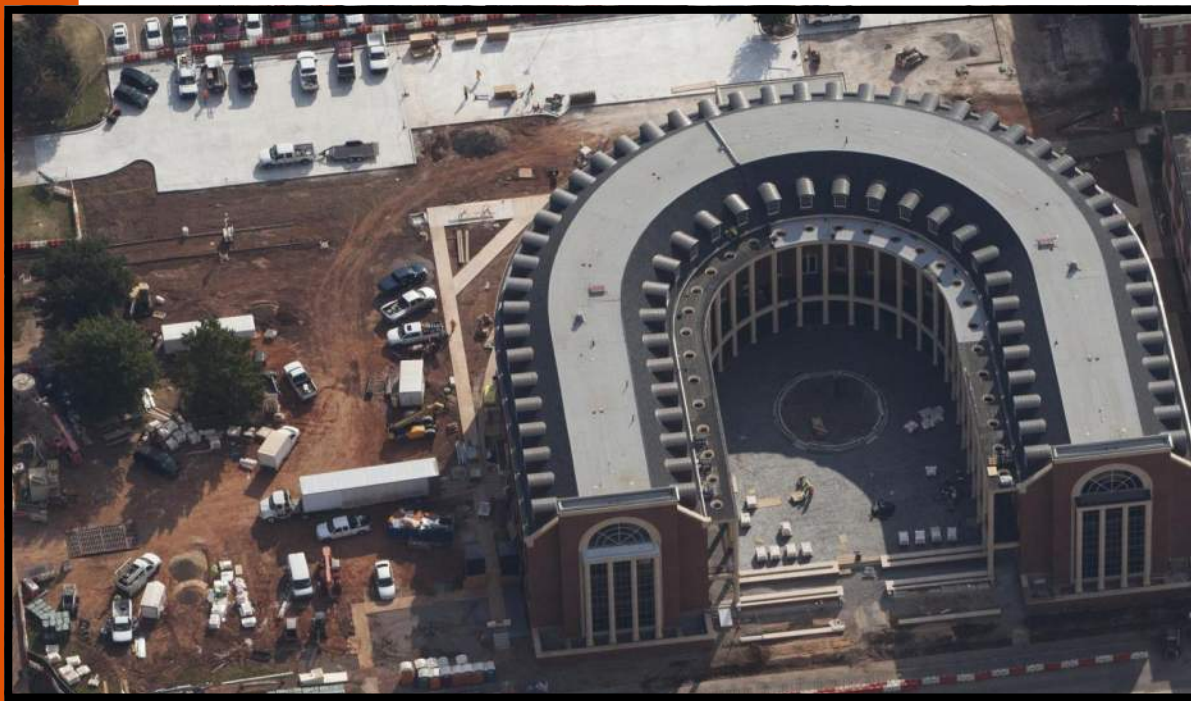
PICTURED BELOW:

3RD FLOOR LVT FOR WORKROOM





AERIAL PHOTOS



SEPTEMBER 2017



APRIL 2015



MAY 2015



JUNE 2015



JULY 2015



AUGUST 2015



SEPTEMBER 2015



OCTOBER 2015



NOVEMBER 2015



DECEMBER 2015



AERIAL PHOTOS



JANUARY 2016



FEBRUARY 2016



MARCH 2016



APRIL 2016



MAY 2016



JUNE 2016



JULY 2016



AUGUST 2016



SEPTEMBER 2016



OCTOBER 2016



NOVEMBER 2016



DECEMBER 2016



JANUARY 2017



FEBRUARY 2017



MARCH 2017



AERIAL PHOTOS



APRIL 2017



MAY 2017



JUNE 2017



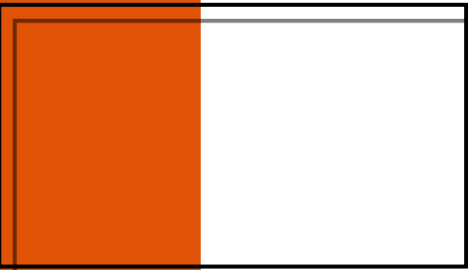
JULY 2017



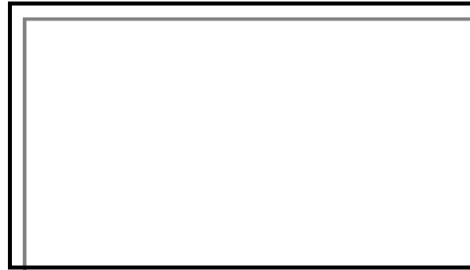
AUGUST 2017



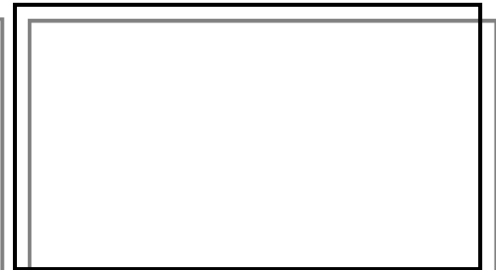
SEPTEMBER 2017



OCTOBER 2017



NOVEMBER 2017



DECEMBER 2017



JANUARY 2018



“The only thing better than recognizing a quality product is building one.”

www.manhattanconstruction.com



UPCOMING ACTIVITIES FOR OCTOBER

- ◆ CONT. CARPET AND LVT INSTALL IN BASEMENT
- ◆ CONT. WALL VINYL ON 2ND FLOOR
- ◆ BEGIN PLAZA STAGE CAST STONE
- ◆ CONT. GFRC INSTALLATION
- ◆ START DROPPING CEILING TILES ON THE FIRST FLOOR
- ◆ CONT. WOOD CEILING INSTALLATION FOR 1ST FLOOR
- ◆ CONT. EXTERIOR PAVING AND SIDEWALK
- ◆ CONT. EXTERIOR CIVIL GRADING

FOR A LIVE FEED OF THE PROJECT, VISIT:

[HTTP://SPEARS.OKSTATE.EDU/BUILDING/LIVE/](http://spears.okstate.edu/building/live/)

[HTTP://SPEARS.OKSTATE.EDU/BUILDING/](http://spears.okstate.edu/building/)



DETERMAN SCHEIRMAN, INC.
CONSULTING ENGINEERS

L R F P
Oklahoma State University,
Long Range Facilities Planning,



TM