



OSU SPEARS SCHOOL OF BUSINESS BUILDING

OKLAHOMA STATE UNIVERSITY



SEPTEMBER PROGRESS REPORT

9.31.2016



MONTHLY OVERVIEW

- ◆ CONT. INTERIOR WALL FRAMING & WALL LAYOUT
- ◆ CONT. MEP INSTALL
- ◆ STARTED WINDOW INSTALLATION
- ◆ CONT. INSTALLING BRICK MASONRY
- ◆ CONT. ROUGH IN AND INSTALL OF DORMERS
- ◆ BEGAN INSTALL OF ROOF INSULATION AND ICE & WATER SHIELD
- ◆ BEGAN FLAT ROOFING
- ◆ FINISHING UP WEATHER BARRIER
- ◆ CONT. UNDERGROUND UTILITY CONNECTION

MONTHLY PROGRESS REPORT

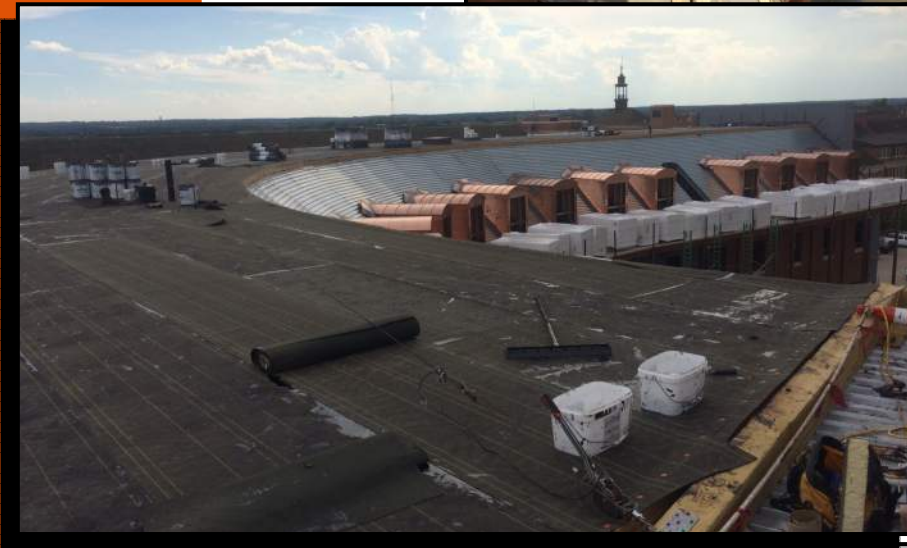
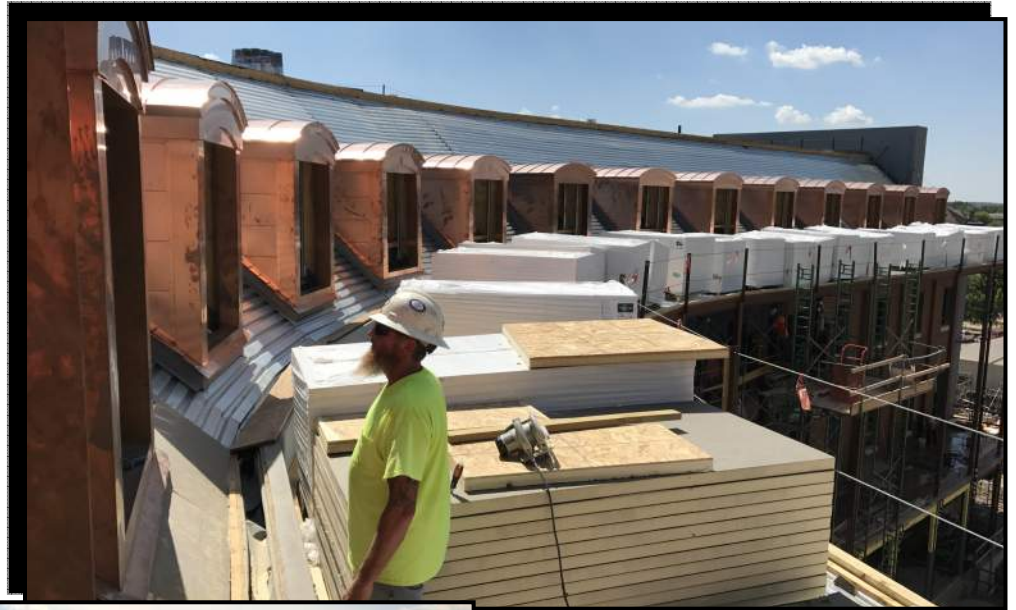
PROGRESS REPORT: THIS SEPTEMBER, INTERIOR WALL LAYOUT AND FRAMING HAS SHOT UP ON ALL FLOORS AND IS COMING TO COMPLETION ON THE FOURTH FLOOR. BRICK MASONRY IS CONTINUING ALL AROUND DIFFERENT PARTS OF THE BUILDING, THE EXTERIOR NORTHEAST SIDE IS NEARING COMPLETION WHILE WE ARE ALSO MAKING HEAD WAY ON THE INTERIOR SOUTH AND SOUTH END CAP. WITH ROOF DECKING COMPLETED ROOF INSULATION, NAILER BOARD, AND ICE AND WATER SHIELD ARE BEING LAID QUICKLY ACROSS THE SLOPED ROOF. DORMER INSTALLATION CONTINUES ON EXTERIOR SOUTH SIDE WITH WINDOWS ALREADY IN PLACE IN ALL INTERIOR SOUTH DORMERS. AS THE BRICK IS WASHED OFF, WINDOWS ARE BEING INSTALLED RIGHT BEHIND THEM WITH 3RD AND 2ND FLOOR WINDOWS INSTALLED ON THE INTERIOR SOUTH WALLS. MEP ROUGH-IN IS UNDERWAY AND CONTINUING FLOOR BY FLOOR WORKING DOWNWARD.

AS CONSTRUCTION CONTINUES, MANHATTAN WILL ISSUE MONTHLY PROGRESS REPORTS THROUGHOUT THE CONSTRUCTION PROCESS. TYPICALLY, THESE REPORTS ARE GENERATED AND TRANSMITTED ON THE LAST DAY OF EACH MONTH. THESE REPORTS ARE MEANT TO SERVE AS A TOOL FOR OSU LONG RANGE FACILITIES PLANNING TO DOCUMENT PRODUCTION AND KEEP INTERESTED PARTIES UPDATED WITH PROGRESS WHOM WOULD NOT OTHERWISE BE INVOLVED ON A DAILY BASIS.

MANHATTAN IS PROUD TO PARTNER WITH OSU LONG RANGE FACILITIES PLANNING, SPEARS SCHOOL OF BUSINESS, AND ELLIOT AND ASSOCIATES ON THIS PROJECT.



DORMER INSTALL & ROOFING



**PICTURED ABOVE &
BELOW:**

DORMERS ARE INSTALLED AT
THE SOUTH INTERIOR RADIUS

PICTURED LEFT:

FLAT ROOF INSTALLATION





BRICK MASONRY



PICTURED ABOVE:

SOUTH EXTERIOR BRICK MASONRY

PICTURED RIGHT:

SOUTH END CAP BRICK MASONRY

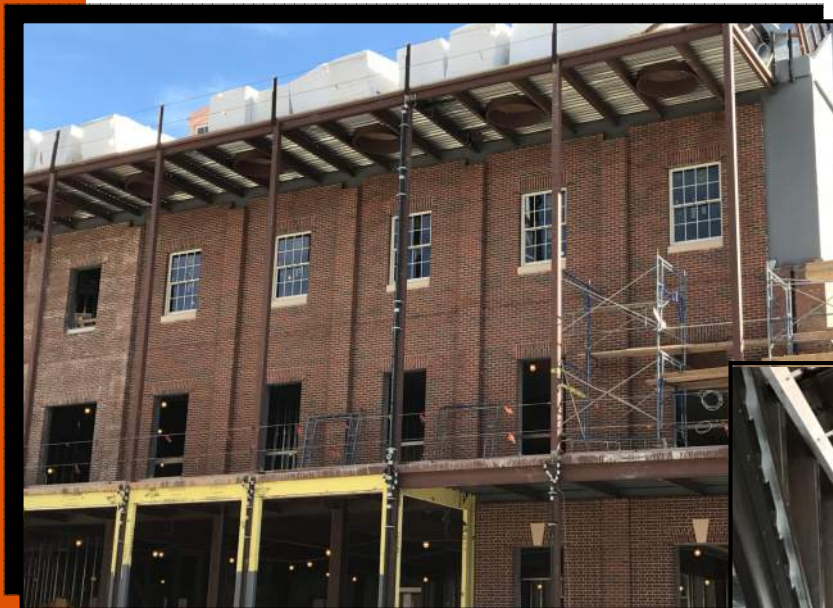
PICTURED BELOW:

NORTHEAST EXTERIOR BRICK MASONRY
TO THE 2ND FLOOR





WINDOW INSTALLATION



PICTURED ABOVE:

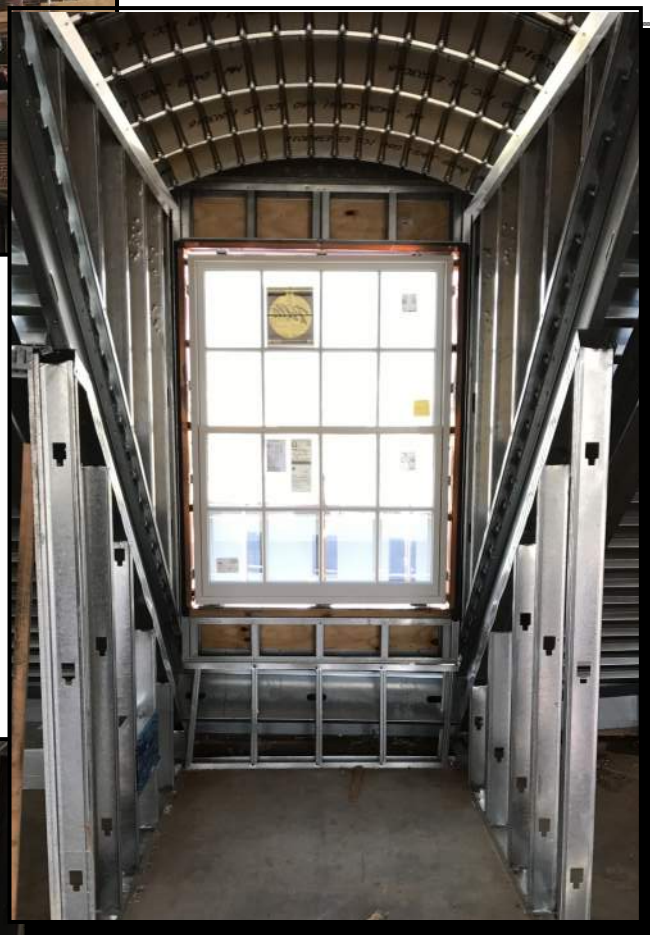
SOUTH INTERIOR 3RD FLOOR
WINDOWS INSTALLED

PICTURED RIGHT:

SOUTH DORMER WINDOWS
INSTALLATION

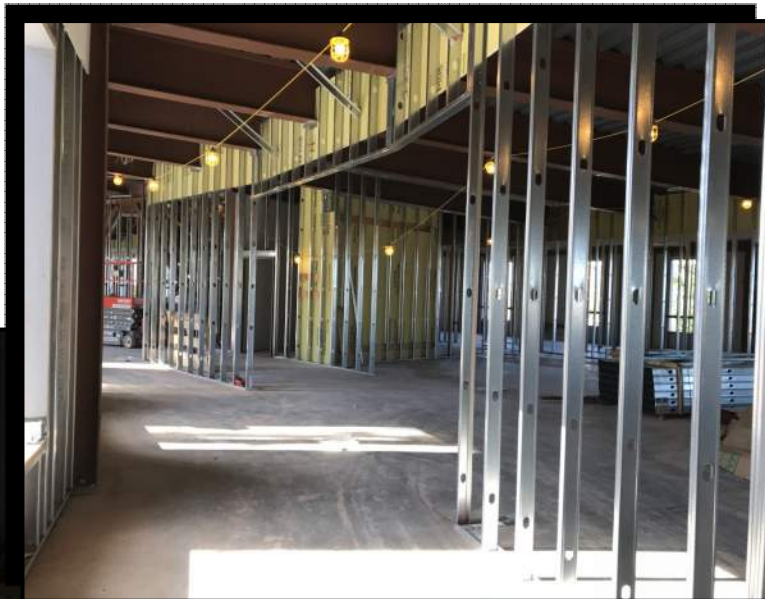
PICTURED BELOW:

THIRD FLOOR WINDOW PREP





INTERIOR FRAMING



PICTURED ABOVE:

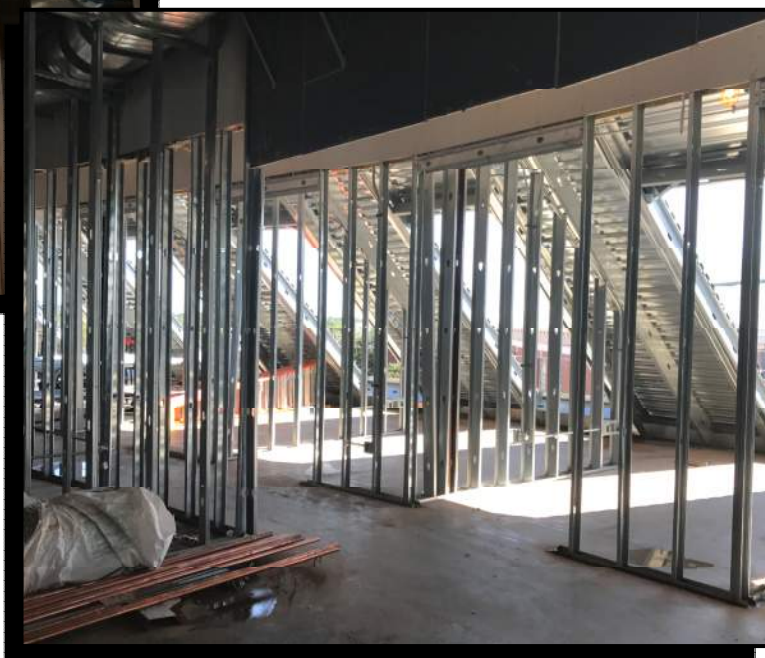
2ND FLOOR NORTH FRAMING

PICTURED LEFT:

BASEMENT SKYLIGHT FRAMING

PICTURED LEFT:

4TH FLOOR OFFICE FRAMING





MEP INSTALL & UTILITY CONNECTION



PICTURED ABOVE:

4TH FLOOR HVAC AND
PLUMBING VENT PIPE

**PICTURED RIGHT AND
BELOW:**

UNDERGROUND ELECTRIC
DUCT BANK INSTALLATION





AERIAL PHOTO



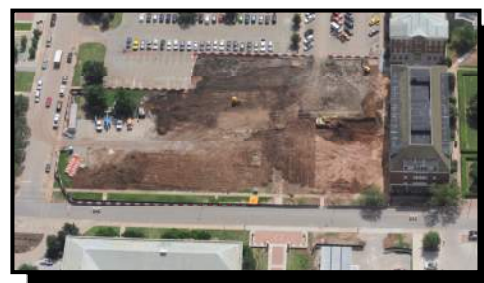
AUGUST 2016



APRIL 2015



MAY 2015



JUNE 2015



JULY 2015



AUGUST 2015



SEPTEMBER 2015



OCTOBER 2015



NOVEMBER 2015



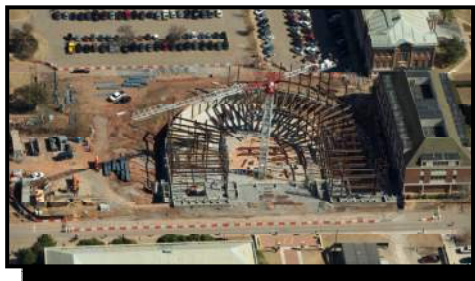
DECEMBER 2015



AERIAL PHOTO



JANUARY 2016



FEBRUARY 2016



MARCH 2016



APRIL 2016



MAY 2016



JUNE 2016



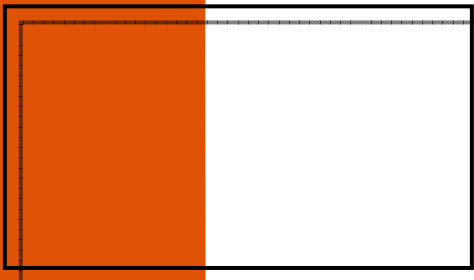
JULY 2016



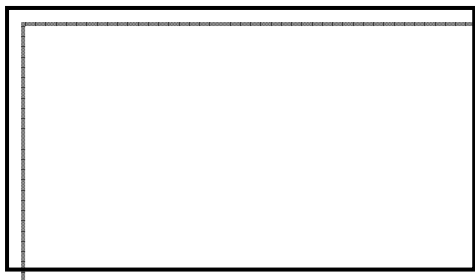
AUGUST 2016



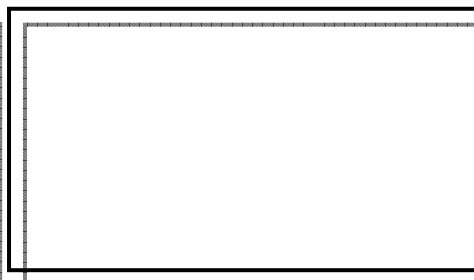
SEPTEMBER 2016



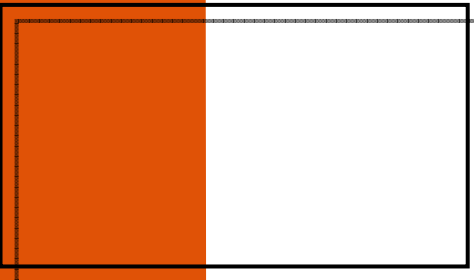
OCTOBER 2016



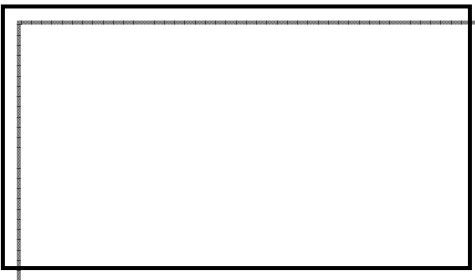
NOVEMBER 2016



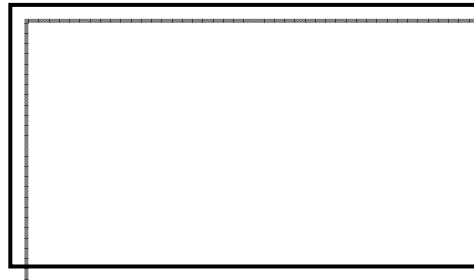
DECEMBER 2016



JANUARY 2017



FEBRUARY 2017



MARCH 2017



"The only thing better than recognizing a quality product is building one."

www.manhattanconstruction.com



UPCOMING ACTIVITIES FOR OCTOBER

- CONT. BASEMENT, 4TH FLOOR & 3RD FLOOR MEP
- CONT. INSTALLATION OF WINDOWS
- CONT. LAYING ROOF SHINGLES
- COMPLETE ELECTRICAL ROOMS
- CONT. BRICK MASONRY
- CONT. DORMER INSTALLATION
- BEGIN INSTALLATION OF LOGGIA GLASS
- CONT. LAYING OUT/FRAMING OF BASEMENT, 2ND, 3RD, AND 4TH FLOOR WALLS
- BEGIN CURTAINWALL INSTALLATION

FOR A LIVE FEED OF THE PROJECT, VISIT:

[HTTP://SPEARS.OKSTATE.EDU/BUILDING/LIVE/](http://spears.okstate.edu/building/live/)

[HTTP://SPEARS.OKSTATE.EDU/BUILDING/](http://spears.okstate.edu/building/)



DETERMAN SCHEIRMAN, INC.
CONSULTING ENGINEERS



L R F P
Oklahoma State University,
Long Range Facilities Planning,



TM