



# OSU SPEARS SCHOOL OF BUSINESS BUILDING

OKLAHOMA STATE UNIVERSITY



## SEPTEMBER PROGRESS REPORT

9.30.2015



Oklahoma State University

### NEW BUILDING for THE SPEARS SCHOOL OF BUSINESS




Elliott + Associates Architects

**ARCHITECT**




Manhattan  
Building excellence.

**CONTRACTOR**



BIERMAN-SCHERMAN  
CONSULTING  
ENGINEERS

**MECHANICAL,  
PLUMBING  
& ELECTRICAL**



wallace

**STRUCTURAL  
& CIVIL**

**OSU  
LRFP**

**PROJECT  
MANAGEMENT**



#### MONTHLY OVERVIEW

- COMPLETED DRILLED PIERS
- CONTINUED FORMING/POURING GRADE BEAMS AND FOUNDATIONS
- BID PACKAGE III HAS BEEN BID OUT
- POURED NORTH & SOUTH ELEVATOR PITS
- STARTED EXCAVATION FOR SUMP BASINS
- STARTED POURING FOUNDATION WALLS

#### BASINS

## MONTHLY PROGRESS REPORT

AS CONSTRUCTION CONTINUES, MANHATTAN WILL ISSUE MONTHLY PROGRESS REPORTS THROUGHOUT THE CONSTRUCTION PROCESS. TYPICALLY, THESE REPORTS ARE GENERATED AND TRANSMITTED ON THE LAST DAY OF EACH MONTH. THESE REPORTS ARE MEANT TO SERVE AS A TOOL FOR OSU LONG RANGE FACILITIES PLANNING TO DOCUMENT PRODUCTION AND KEEP INTERESTED PARTIES UPDATED WITH PROGRESS WHOM WOULD NOT OTHERWISE BE INVOLVED ON A DAILY BASIS.

**PROGRESS REPORT:** DURING THE MONTH OF SEPTEMBER WE CONTINUED TO POUR CONCRETE. BOTH ELEVATOR PITS ARE COMPLETE AND WE HAVE STARTED POURING THE BASEMENT WALLS. THE DRILLED PIERS ARE COMPLETE AND OUR MECHANICAL SUBCONTRACTOR HAS BEGUN EXCAVATING FOR THE NORTH SUMP BASIN. THE STRUCTURE OF THE BUILDING IS STARTING TO TAKE SHAPE.

MANHATTAN IS PROUD TO PARTNER WITH OSU LONG RANGE FACILITIES PLANNING, SPEARS SCHOOL OF BUSINESS, AND ELLIOT AND ASSOCIATES ON THIS PROJECT.

ISSUE NO.06



# BASEMENT/COUNTERFORT WALLS

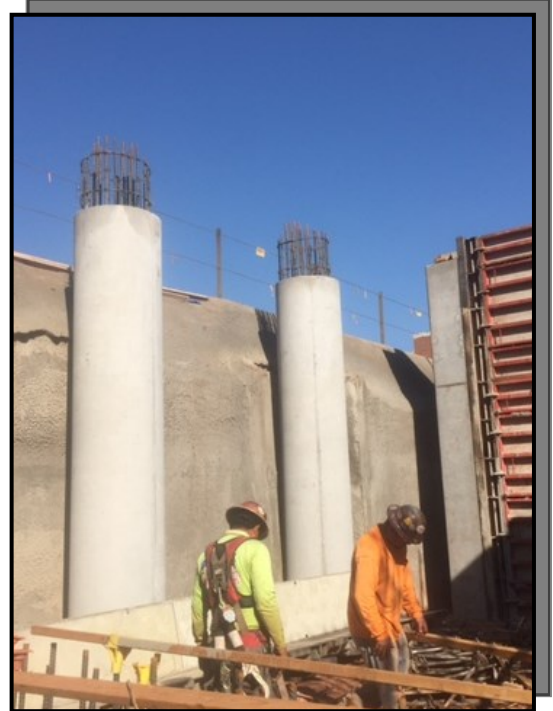


PICTURED: LITHKO FORMING/  
POURING FOUNDATION, BASEMENT  
WALLS, & COUNTERFORT WALLS





# BASEMENT/COUNTERFORT WALLS CONT.

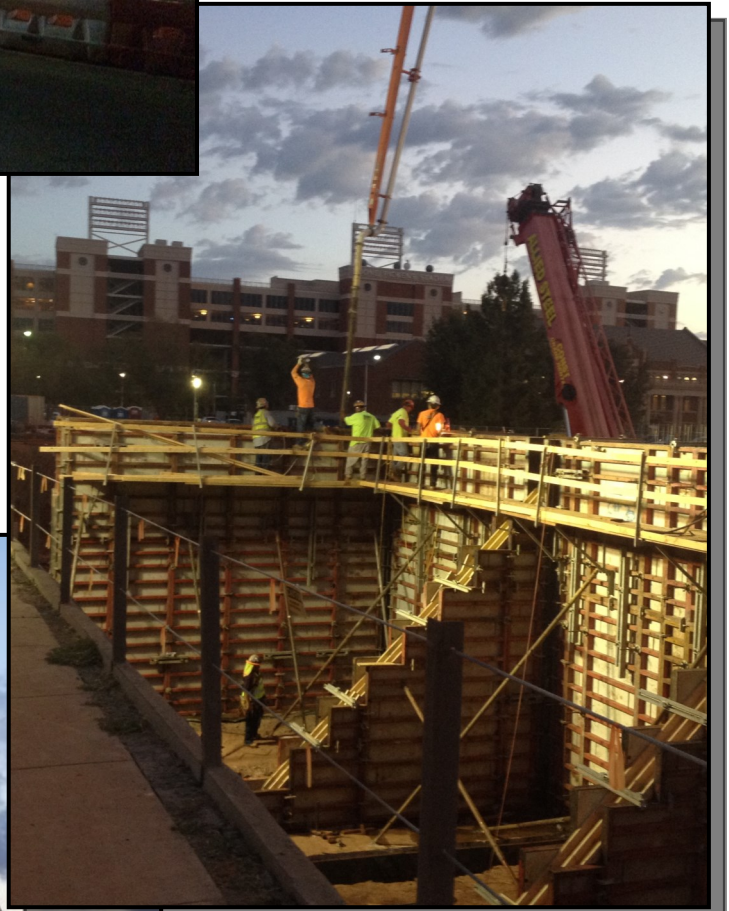




# EARLY MORNING CONCRETE POUR



PICTURED: POURING  
FOUNDATION WALLS





# ELEVATOR PITS



**PICTURED ABOVE:** FORMED ELEVATOR PIT

**PICTURED RIGHT:** SOUTH ELEVATOR PIT



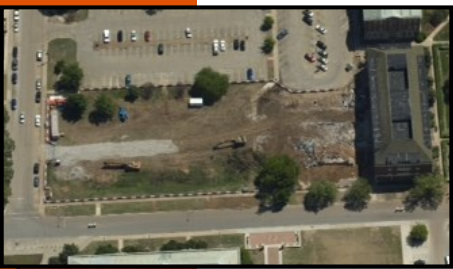
**PICTURED LEFT:** NORTH ELEVATOR PIT/SUMP BASIN



# AERIAL PHOTO



## SEPTEMBER 2015



APRIL 2015



MAY 2015



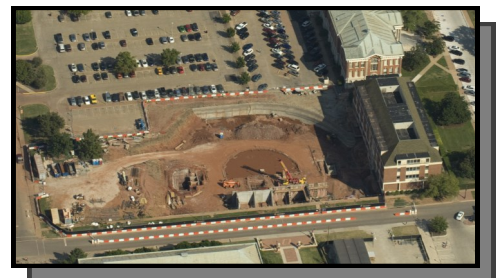
JUNE 2015



JULY 2015



AUGUST 2015



SEPTEMBER 2015



"The only thing better than recognizing a quality product is building one."

www.manhattanconstruction.com



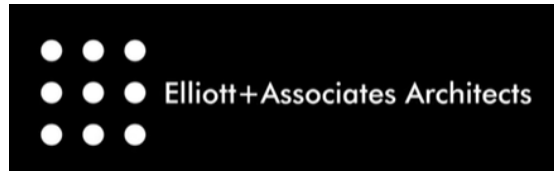
## UPCOMING ACTIVITIES

- CONTINUE POURING FOOTINGS & GRADE BEAMS
- CONTINUE POURING FOUNDATION WALLS
- INSTALL UNDERGROUND DRAINAGE PIPE
- START WATERPROOFING
- POUR PIER CAP AND SET LOWER SECTION FOR TOWER CRANE
- FORM AT 79'-3" DROP AREA

FOR A LIVE FEED OF THE PROJECT, VISIT:

[HTTP://SPEARS.OKSTATE.EDU/BUILDING/LIVE/](http://spears.okstate.edu/building/live/)

[HTTP://SPEARS.OKSTATE.EDU/BUILDING/LIVE2/](http://spears.okstate.edu/building/live2/)



**DETERMAN SCHEIRMAN, INC.**  
CONSULTING ENGINEERS

**L R F P**  
Oklahoma State University,  
Long Range Facilities Planning,



TM