



OSU SPEARS SCHOOL OF BUSINESS BUILDING

OKLAHOMA STATE UNIVERSITY



OCTOBER PROGRESS REPORT

10.31.2017



MONTHLY OVERVIEW

- ◆ CONT. WATERPROOFING OF THE LOGGIA BALCONY
- ◆ INSTALLATION OF WOOD WALL PANELS IN MYER'S SUITE
- ◆ INSTALL FIXED TABLES IN LENORMAN CLASSROOM
- ◆ CONT. GFRC INSTALLATION
- ◆ CONT WALL VINYL IN THE BASEMENT
- ◆ CONT. INSTALL OF EXTERIOR DOORS
- ◆ CONT. EXTERIOR CONCRETE
- ◆ ALL IT ROOMS TURNED OVER TO OWNER
- ◆ START OF ARCHITECTURAL PUNCH FOR 4TH AND 3RD FLOORS

MONTHLY PROGRESS REPORT

PROGRESS REPORT: IN OCTOBER, THE EXTERIOR OF THE BUILDING HAS CONTINUED TO PROGRESS WITH THE UTILITY YARD BEING POURED AHEAD OF SETTING THE STEEL FOR THE UTILITY YARD FENCE. THE PLAZA IS COMING CLOSER TO COMPLETION WITH THE INSTALLATION OF THE CAST STONE STARTING AT THE PLAZA STAGE AND WORK TO ALLOW THE INSTALLATION OF THE PAVERS ALONG THE WEST RAMP. THE MYER'S SUITE IS NEARING COMPLETION AS WE HAVE INSTALLED THE WOOD WALL PANELS, THE ENTRY WOOD AND GLASS AS WELL AS THE CARPET. IN THE CLASSROOMS ON THE 2ND FLOOR AND IN THE BASEMENT WE HAVE STARTED THE INSTALLATION OF THE SOUND SOAK ACOUSTICAL WALL PANELS. THE WALL VINYL CONTINUES TO BE INSTALLED IN THE BASEMENT AND THE FIXED TABLES IN THE LENORMAN CLASSROOM HAVE BEEN INSTALLED.

AS CONSTRUCTION CONTINUES, MANHATTAN WILL ISSUE MONTHLY PROGRESS REPORTS THROUGHOUT THE CONSTRUCTION PROCESS. TYPICALLY, THESE REPORTS ARE GENERATED AND TRANSMITTED ON THE LAST DAY OF EACH MONTH. THESE REPORTS ARE MEANT TO SERVE AS A TOOL FOR OSU LONG RANGE FACILITIES PLANNING TO DOCUMENT PRODUCTION AND KEEP INTERESTED PARTIES UPDATED WITH PROGRESS WHOM WOULD NOT OTHERWISE BE INVOLVED ON A DAILY BASIS.



CEILING



PICTURED ABOVE:

2ND FLOOR CORRIDOR "G" FIXTURE

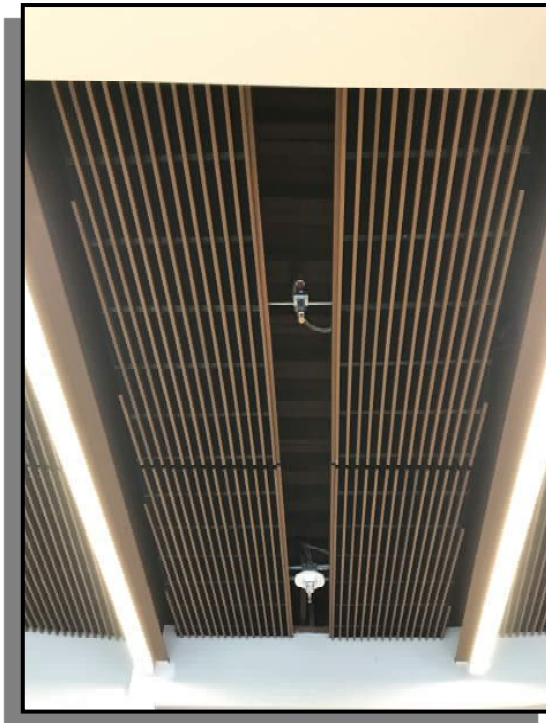
PICTURED TOP LEFT:

1ST FLOOR KEYSTONE ROOM WOOD
CEILING



PICTURED BOTTOM LEFT:

1ST FLOOR TO BASEMENT CENTER
STAIR WOOD CEILING





EXTERIOR IMPROVEMENTS



PICTURED ABOVE:

UTILITY YARD FOOTING

PICTURED RIGHT:

UTILITY YARD SLAB PREP

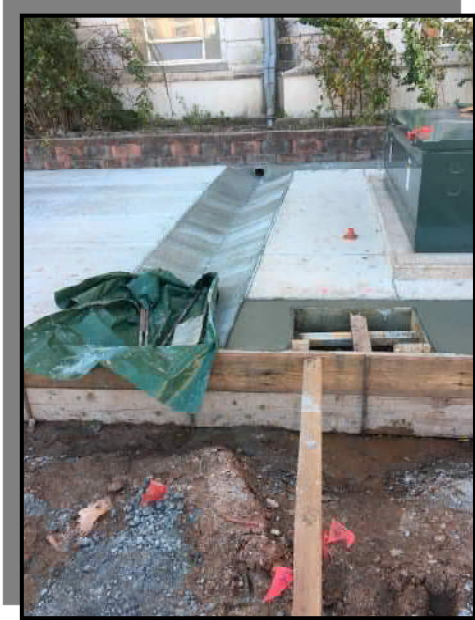
PICTURED BELOW:

SOUTH SIDE PAVER INSTALLATION





EXTERIOR IMPROVEMENTS



PICTURED ABOVE:

UTILITY YARD STORM WATER FLUME

PICTURED RIGHT:

PLAZA STAGE CAST STONE

PICTURED BELOW:

EAST SIDE STAIRS





INTERIOR FRAMING, AND FINISHES



PICTURED ABOVE:

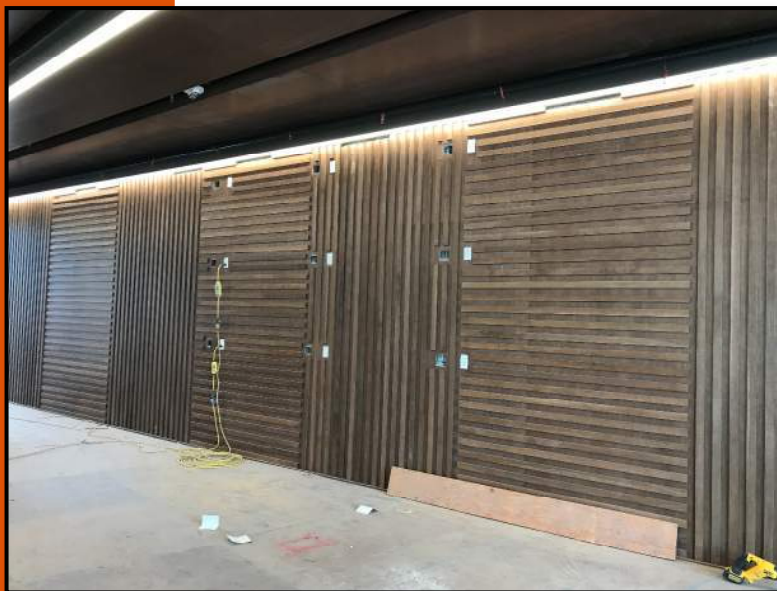
LENORMAN CLASSROOM WALL VINYL
AND SOUNDSOAK PREP

PICTURED TOP LEFT:

3RD FLOOR MYER'S SUITE WOOD
WALLS

PICTURED BOTTOM LEFT:

1ST FLOOR KEYSTONE ROOM
WOOD PANEL DISPLAY WALL





FLOORING

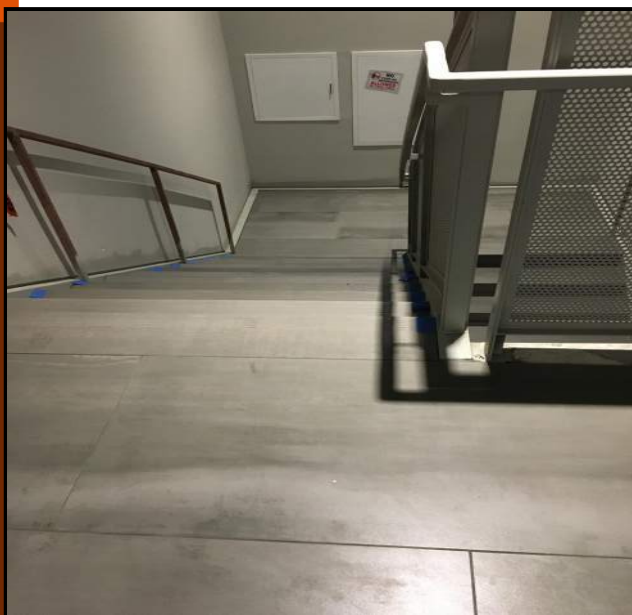


PICTURED ABOVE:
BASEMENT LENORMAN CLASSROOM
CARPET PREP

PICTURED RIGHT:
BASEMENT CARPET INSTALLED

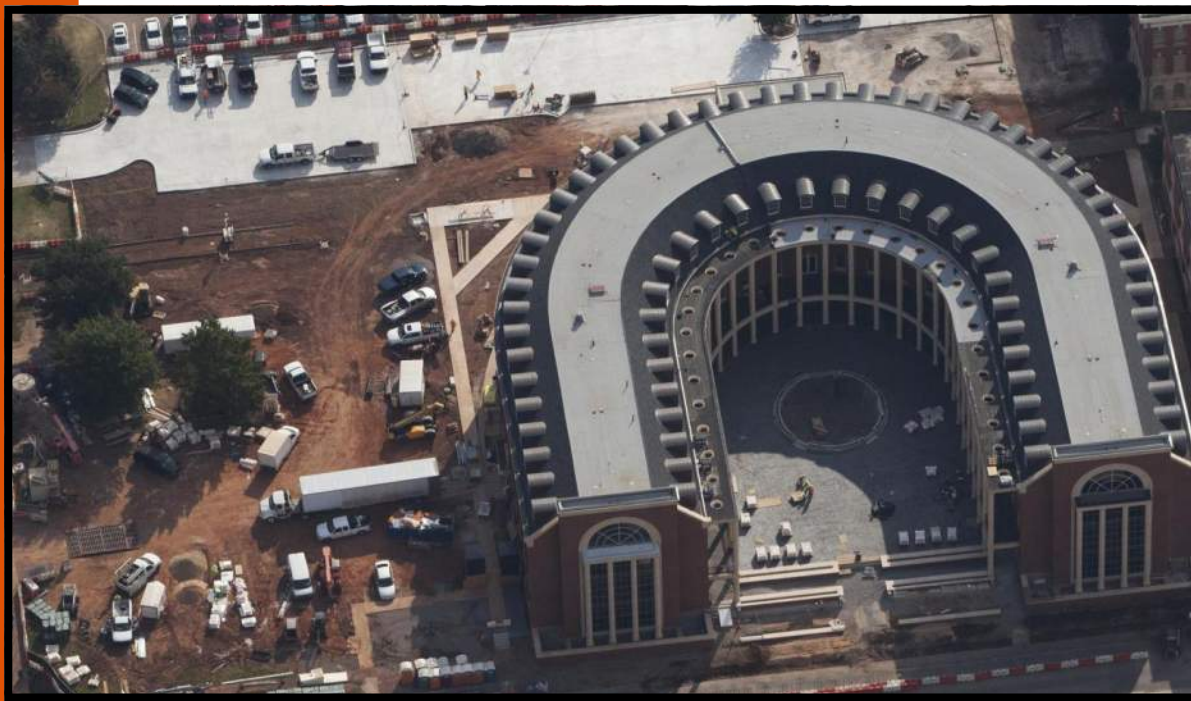


PICTURED BELOW:
4TH FLOOR SOUTH STAIRWELL TILE
INSTALLED





AERIAL PHOTOS



OCTOBER 2017



APRIL 2015



MAY 2015



JUNE 2015



JULY 2015



AUGUST 2015



SEPTEMBER 2015



OCTOBER 2015



NOVEMBER 2015



DECEMBER 2015



AERIAL PHOTOS



JANUARY 2016



FEBRUARY 2016



MARCH 2016



APRIL 2016



MAY 2016



JUNE 2016



JULY 2016



AUGUST 2016



SEPTEMBER 2016



OCTOBER 2016



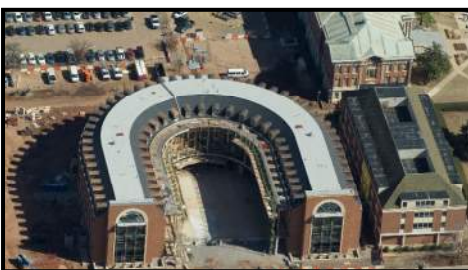
NOVEMBER 2016



DECEMBER 2016



JANUARY 2017



FEBRUARY 2017



MARCH 2017



AERIAL PHOTOS



APRIL 2017



MAY 2017



JUNE 2017



JULY 2017



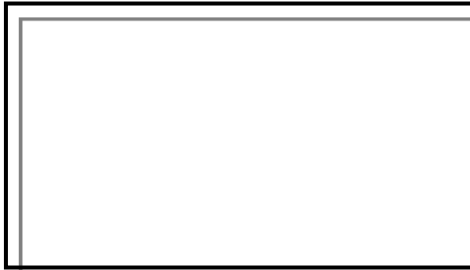
AUGUST 2017



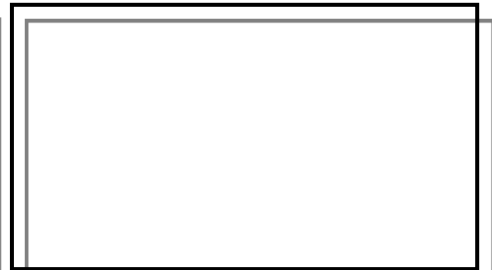
SEPTEMBER 2017



OCTOBER 2017



NOVEMBER 2017



DECEMBER 2017



JANUARY 2018



"The only thing better than recognizing a quality product is building one."

www.manhattanconstruction.com



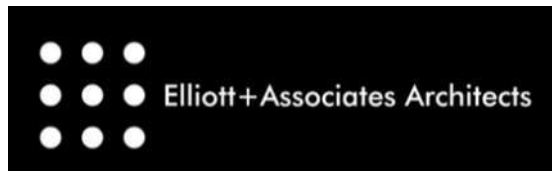
UPCOMING ACTIVITIES FOR NOVEMBER

- ◆ START CARPET AND LVT INSTALL IN FIRST FLOOR
- ◆ START WALL VINYL ON FIRST FLOOR
- ◆ BEGIN LOGGIA BALCONY SLOPED GROUT AND PAVERS
- ◆ CONT. GFRC INSTALLATION
- ◆ START DROPPING CEILING TILES ON THE FIRST FLOOR
- ◆ CONT. WOOD CEILING INSTALLATION FOR 1ST FLOOR
- ◆ CONT. EXTERIOR PAVING AND SIDEWALK
- ◆ CONT. EXTERIOR CIVIL GRADING

FOR A LIVE FEED OF THE PROJECT, VISIT:

[HTTP://SPEARS.OKSTATE.EDU/BUILDING/LIVE/](http://spears.okstate.edu/building/live/)

[HTTP://SPEARS.OKSTATE.EDU/BUILDING/](http://spears.okstate.edu/building/)



DETERMAN SCHEIRMAN, INC.
CONSULTING ENGINEERS



L R F P

Oklahoma State University,
Long Range Facilities Planning,



TM