



OSU SPEARS SCHOOL OF BUSINESS BUILDING

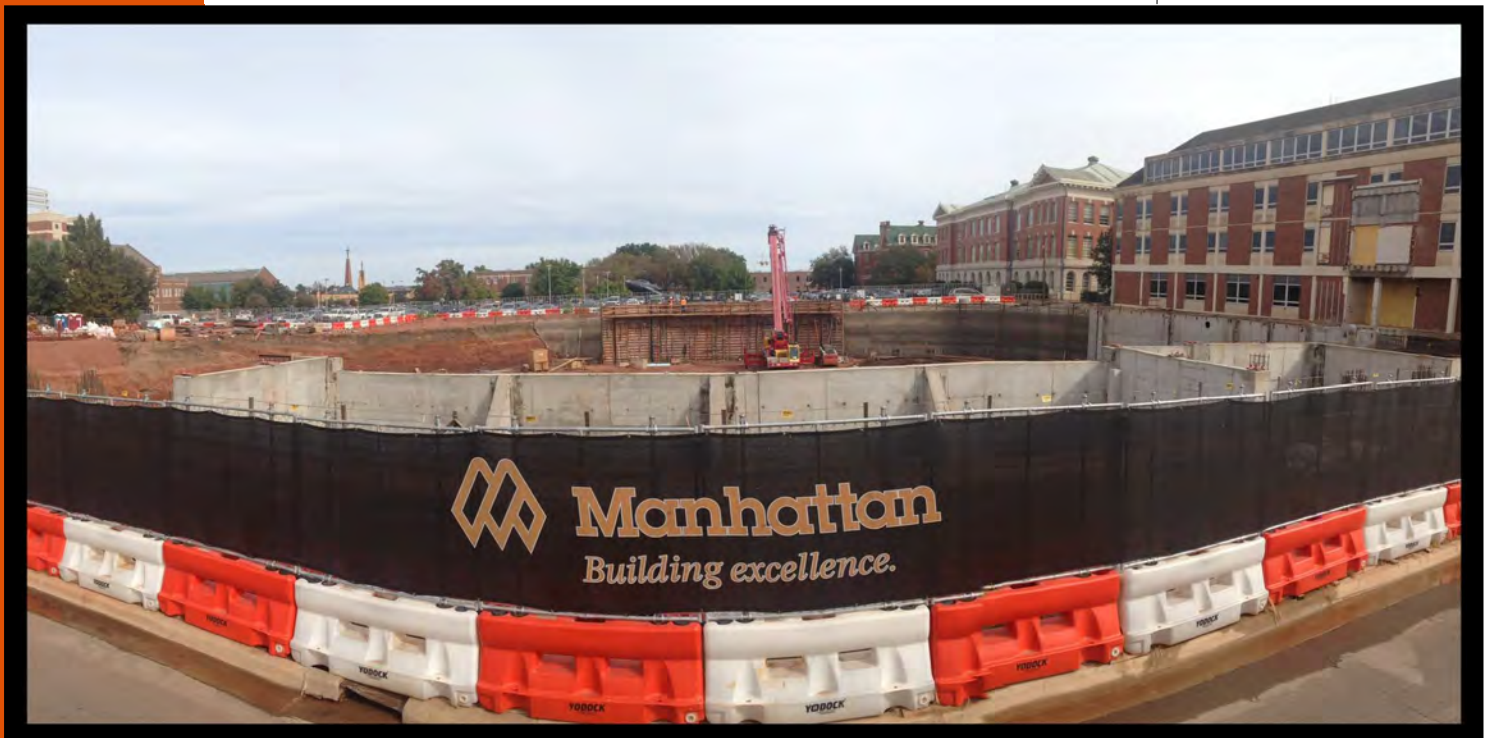
OKLAHOMA STATE UNIVERSITY



Manhattan

NOVEMBER PROGRESS REPORT

11.30.2015



MONTHLY OVERVIEW

- POURED 2'-3" DEPRESSED SOG
- CONTINUED INSTALLING UNDERGROUND DRAINAGE PIPE
- CONTINUED WATERPROOFING BASEMENT WALLS
- CONTINUED FORMING/POURING GRADE BEAMS
- CONTINUED POURING FOUNDATION WALLS
- BORED UNDER HESTER ST. FOR TEMP POWER THAT WILL SERVICE THE TOWER CRANE AND JOBSITE

MONTHLY PROGRESS REPORT

AS CONSTRUCTION CONTINUES, MANHATTAN WILL ISSUE MONTHLY PROGRESS REPORTS THROUGHOUT THE CONSTRUCTION PROCESS. TYPICALLY, THESE REPORTS ARE GENERATED AND TRANSMITTED ON THE LAST DAY OF EACH MONTH. THESE REPORTS ARE MEANT TO SERVE AS A TOOL FOR OSU LONG RANGE FACILITIES PLANNING TO DOCUMENT PRODUCTION AND KEEP INTERESTED PARTIES UPDATED WITH PROGRESS WHOM WOULD NOT OTHERWISE BE INVOLVED ON A DAILY BASIS.

- **PROGRESS REPORT:** DURING THE MONTH OF NOVEMBER WE HAVE NEARLY COMPLETED THE BASEMENT FOUNDATION WALLS. THE MECHANICAL SUBCONTRACTOR HAS STARTED INSTALLING THE UNDERGROUND PLUMBING AND CONTINUED INSTALLING THE UNDERGROUND DRAINAGE PIPING. WORK HAS STARTED TO SUPPLY THE JOBSITE WITH TEMPORARY POWER BY MID DECEMBER.

MANHATTAN IS PROUD TO PARTNER WITH OSU LONG RANGE FACILITIES PLANNING, SPEARS SCHOOL OF BUSINESS, AND ELLIOT AND ASSOCIATES ON THIS PROJECT.

ISSUE NO.08



BASEMENT WALLS



PICTURED: LITHKO FORMING FOUNDATION BASEMENT WALLS.





UNDERGROUND UTILITIES



PICTURED LEFT: UNDERGROUND DRAINAGE SYSTEM



PICTURED: UNDERGROUND PLUMBING INSTALLATION



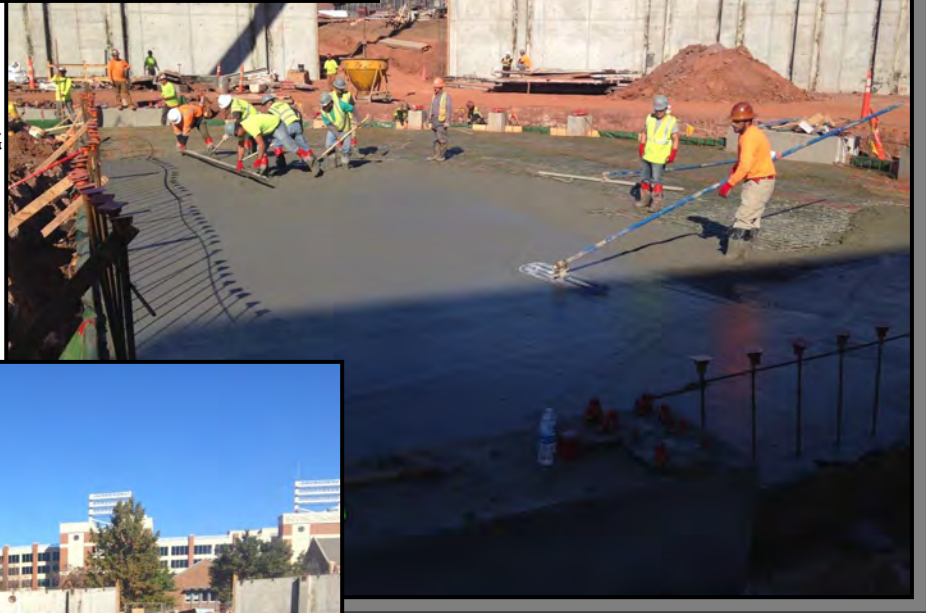


DEPRESSED SLAB



PICTURED LEFT: FORMING 2'-3" DEPRESSED SLAB

PICTURED: POURING AND FINISHING 2'-3" DEPRESSED SLAB



PICTURED: CURED 2'-3" DEPRESSED SLAB



WATERPROOFING

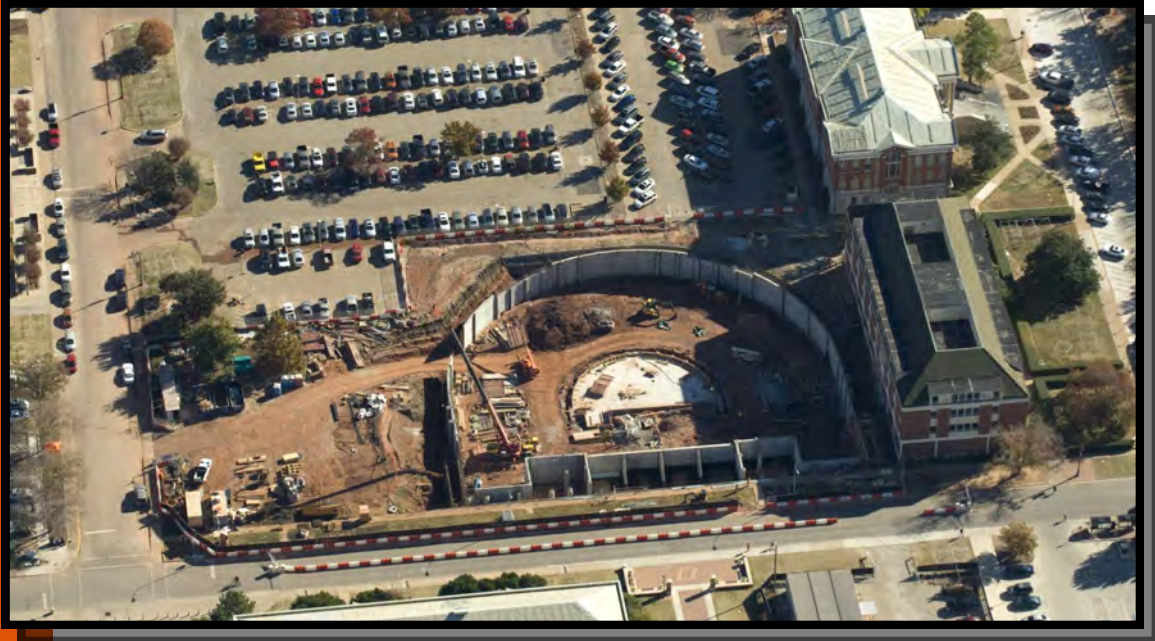


PICTURED: BFF WATERPROOFING BASEMENT WALLS ALONG HESTER ST.





AERIAL PHOTO



NOVEMBER 2015



APRIL 2015



MAY 2015



JUNE 2015



JULY 2015



AUGUST 2015



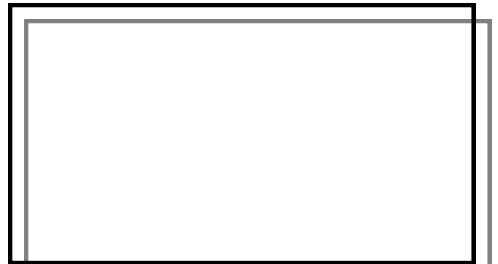
SEPTEMBER 2015



OCTOBER 2015



NOVEMBER 2015



DECEMBER 2015



"The only thing better than recognizing a quality product is building one."

www.manhattanconstruction.com



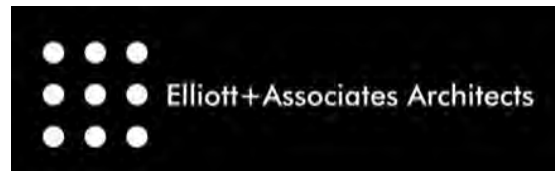
UPCOMING ACTIVITIES FOR DECEMBER

- START BACKFILL ALONG HESTER
- CONTINUE INSTALLING UNDERGROUND PLUMBING PIPE IN BASEMENT
- INSTALL ELECTRICAL/TELECOM FLOOR BOXES IN BASEMENT
- CONTINUE WATERPROOFING
- ERECT THE TOWER CRANE
- START POURING SLAB ON GRADE IN BASEMENT
- BP III B TO BE BID OUT

FOR A LIVE FEED OF THE PROJECT, VISIT:

[HTTP://SPEARS.OKSTATE.EDU/BUILDING/LIVE/](http://spears.okstate.edu/building/live/)

[HTTP://SPEARS.OKSTATE.EDU/BUILDING/](http://spears.okstate.edu/building/)



DETERMAN SCHEIRMAN, INC.
CONSULTING ENGINEERS



L R F P
Oklahoma State University,
Long Range Facilities Planning,



TM