



# OSU SPEARS SCHOOL OF BUSINESS BUILDING

OKLAHOMA STATE UNIVERSITY



## MAY PROGRESS REPORT

5.31.2017



### MONTHLY OVERVIEW

- ◆ CONT. INSULATING AND ROCKING WALLS
- ◆ CONT. MEPF INSTALL
- ◆ INSTALL CABINETRY
- ◆ CONT. GFRC INSTALLATION
- ◆ CONT. 1ST COAT WALLS ON 2ND AND 3RD FLOOR
- ◆ CONT. INSTALL OF SLOT WINDOWS
- ◆ CONT. TERRAZZO ON 2ND AND 3RD FLOOR
- ◆ CONT. EXTERIOR CONCRETE
- ◆ BEGAN INSTALLATION OF TORZO PANELS

## MONTHLY PROGRESS REPORT

**PROGRESS REPORT:** THIS MAY, THE EXTERIOR OF THE PROJECT SITE CONTINUES TO CHANGE WITH SIDEWALKS AND SEAT WALL FOOTINGS BEING FORMED AND Poured ON THE NORTHEAST SIDE OF THE PROJECT. WORK AT THE PLAZA STAGE CONTINUES WITH THE PLANTER BEDS AND STAIRS BEING FORMED. GFRC CONTINUES TO BE INSTALLED ON THE EXTERIOR. INSTALLATION OF THE SLOT WINDOWS AND EIFS HAS BEGUN. THE INTERIOR OF THE PROJECT PROGRESSES WITH FINISHES BEING INSTALLED ON THE 2<sup>ND</sup>, 3<sup>RD</sup>, AND 4<sup>TH</sup> FLOORS. TERRAZZO CONTINUES ON THE 2<sup>ND</sup> FLOOR AND WILL MOVE TO THE BASEMENT AFTERWARDS. WOOD WORK AND LIGHT FIXTURES ARE BEING INSTALLED ON THE 3<sup>RD</sup> AND 4<sup>TH</sup> FLOORS. THE FRAMING AND DRYWALL NEAR COMPLETION ON THE BASEMENT AND 1<sup>ST</sup> FLOOR.

AS CONSTRUCTION CONTINUES, MANHATTAN WILL ISSUE MONTHLY PROGRESS REPORTS THROUGHOUT THE CONSTRUCTION PROCESS. TYPICALLY, THESE REPORTS ARE GENERATED AND TRANSMITTED ON THE LAST DAY OF EACH MONTH. THESE REPORTS ARE MEANT TO SERVE AS A TOOL FOR OSU LONG RANGE FACILITIES PLANNING TO DOCUMENT PRODUCTION AND KEEP INTERESTED PARTIES UPDATED WITH PROGRESS WHOM WOULD NOT OTHERWISE BE INVOLVED ON A DAILY BASIS.

MANHATTAN IS PROUD TO PARTNER WITH OSU LONG RANGE FACILITIES PLANNING, SPEARS SCHOOL OF BUSINESS, AND ELLIOT AND ASSOCIATES ON THIS PROJECT.



## CEILINGS



**PICTURED ABOVE:**

4TH FLOOR CORRIDOR CEILING  
GRID

**PICTURED LEFT:**

3RD FLOOR CORRIDOR K FIXTURES

**PICTURED BELOW:**

1ST FLOOR STUDENT SERVICES RE-  
CEPTION CEILING





## EXTERIOR IMPROVEMENTS



**PICTURED ABOVE:**  
NORTH EXTERIOR SLOT WINDOWS

**PICTURED RIGHT:**  
NORTH EXTERIOR GFRC

**PICTURED BELOW:**  
LOGGIA BALCONY EIFS





## EXTERIOR IMPROVEMENTS



**PICTURED ABOVE:**  
NORTHEAST CONC. BASE FOR PAVERS

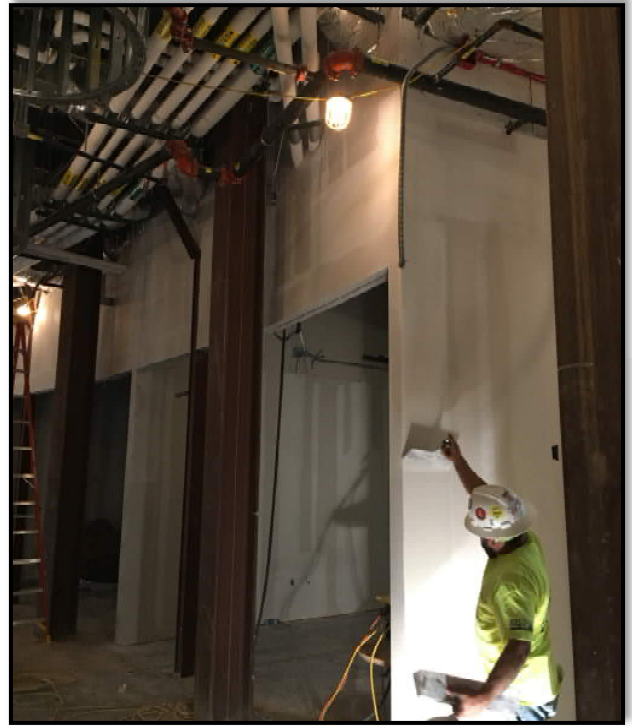
**PICTURED RIGHT:**  
NORTH ENTRY SIDEWALK

**PICTURED BELOW:**  
PLAZA STAGE FORMS





## INTERIOR FRAMING, AND FINISHES



**PICTURED ABOVE:**

BASEMENT CORRIDOR TAPE AND BED

**PICTURED LEFT:**

1ST FLOOR POP-UP STORE FRAMING

**PICTURED BELOW:**

BASEMENT WALL INSULATION





## INTERIOR WOOD WORK



**PICTURED ABOVE:**

4TH FLOOR ELEVATOR LOBBY TORZO  
PANELS

**PICTURED RIGHT:**

WORKROOM 380 G1 CABINETS

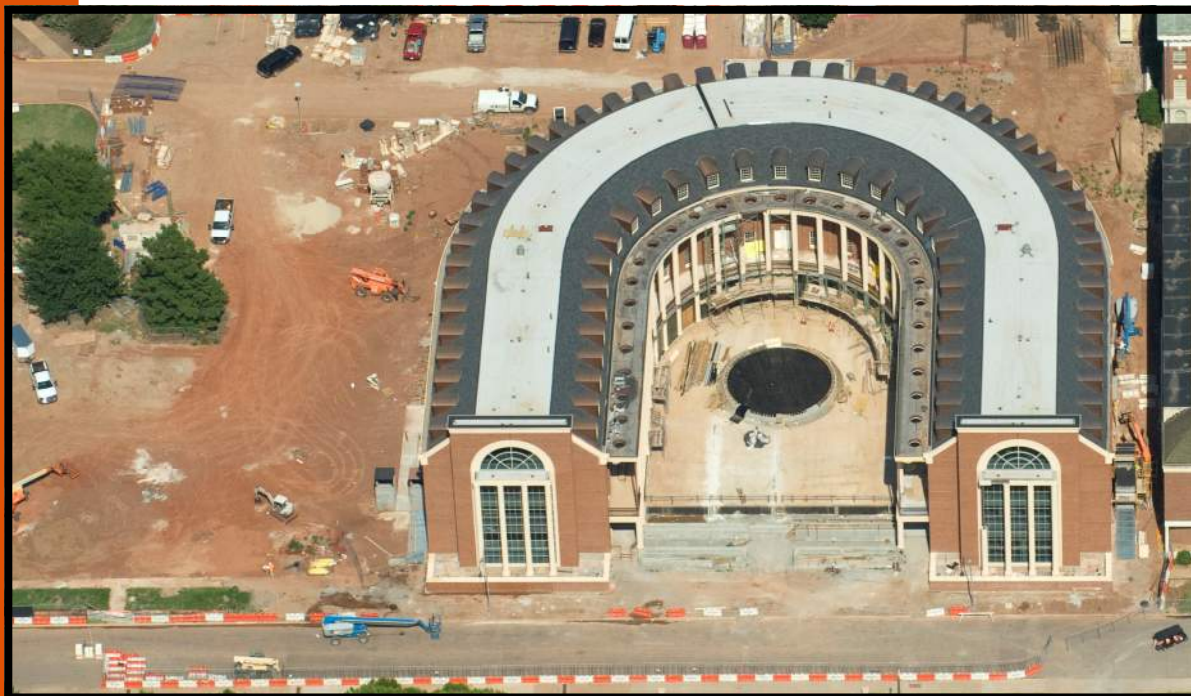
**PICTURED BELOW:**

WORKROOM 380 G1 CABINETS





# AERIAL PHOTOS



MAY 2017



APRIL 2015



MAY 2015



JUNE 2015



JULY 2015



AUGUST 2015



SEPTEMBER 2015



OCTOBER 2015



NOVEMBER 2015



DECEMBER 2015



# AERIAL PHOTOS



JANUARY 2016



FEBRUARY 2016



MARCH 2016



APRIL 2016



MAY 2016



JUNE 2016



JULY 2016



AUGUST 2016



SEPTEMBER 2016



OCTOBER 2016



NOVEMBER 2016



DECEMBER 2016



JANUARY 2017



FEBRUARY 2017



MARCH 2017





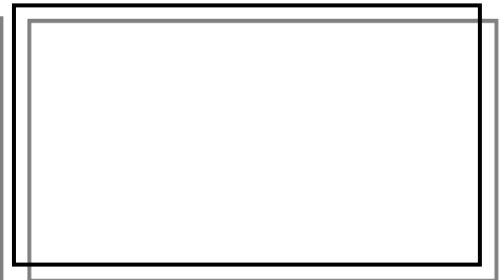
# AERIAL PHOTOS



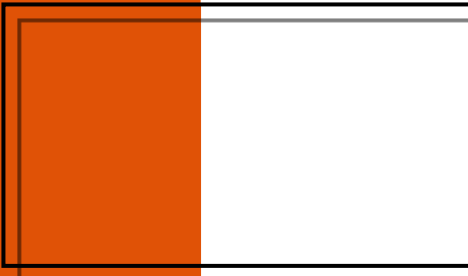
APRIL 2017



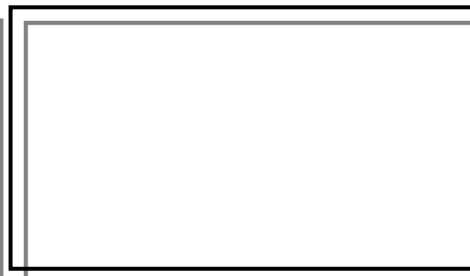
MAY 2017



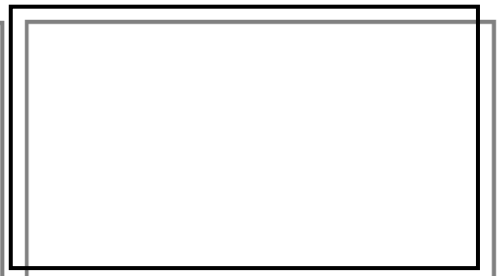
JUNE 2017



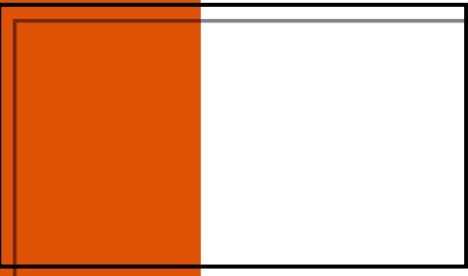
JULY 2017



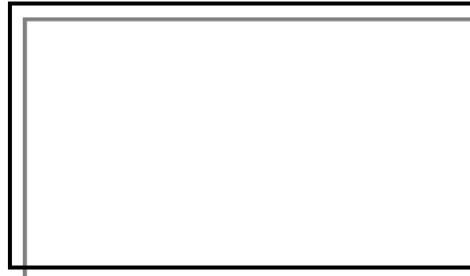
AUGUST 2017



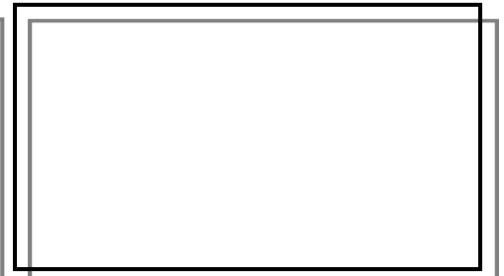
SEPTEMBER 2017



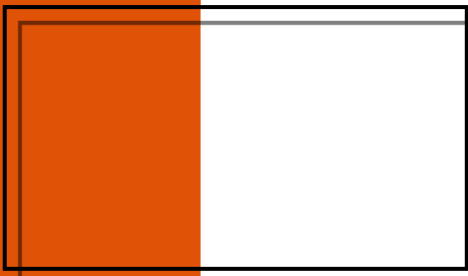
OCTOBER 2017



NOVEMBER 2017



DECEMBER 2017



JANUARY 2018



"The only thing better than recognizing a quality product is building one."

www.manhattanconstruction.com



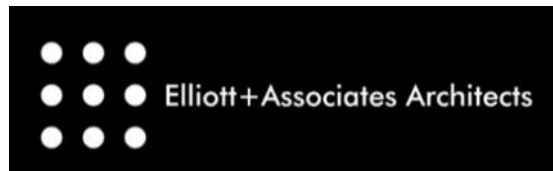
## UPCOMING ACTIVITIES FOR MARCH

- ◆ CONT. INSULATING AND ROCKING WALLS
- ◆ CONT. MEPF INSTALL
- ◆ INSTALL CABINETS
- ◆ CONT. GFRC INSTALLATION
- ◆ CONT. 1ST COAT WALLS ON 2ND AND 3RD FLOOR
- ◆ CONT. INSTALL OF SLOT WINDOW
- ◆ CONT. TERRAZZO ON 2ND AND 3RD FLOOR
- ◆ CONT. EXTERIOR CONCRETE
- ◆ BEGAN INSTALL OF TORZO PANELS

FOR A LIVE FEED OF THE PROJECT, VISIT:

[HTTP://SPEARS.OKSTATE.EDU/BUILDING/LIVE/](http://spears.okstate.edu/building/live/)

[HTTP://SPEARS.OKSTATE.EDU/BUILDING/](http://spears.okstate.edu/building/)



**DETERMAN SCHEIRMAN, INC.**  
CONSULTING ENGINEERS



**L R F P**

Oklahoma State University,  
Long Range Facilities Planning,



TM