



OSU SPEARS SCHOOL OF BUSINESS BUILDING

OKLAHOMA STATE UNIVERSITY



Manhattan

MAY PROGRESS REPORT

5.31.2016



MONTHLY OVERVIEW

- ERECTING STRUCTURAL STEEL
- METAL DECK INSTALLATION 3RD FLOOR AND 4TH FLOOR NORTH
- HESTER STREET UTILITY INSTALLATION
- POUR 4TH FLOOR SOUTH SLAB ON METAL DECKS
- WATERPROOFING AND BACKFILL COMPLETE
- STARTED EXTERIOR WALL FRAMING

MONTHLY PROGRESS REPORT

PROGRESS REPORT: THIS MAY, BASEMENT WALL WATERPROOFING AND BACKFILL OPERATIONS WERE COMPLETED. THE BUILDING'S 3RD FLOOR NORTH DECKING WAS FINISHED AND THE 4TH FLOOR NORTH DECKING HAS STARTED. STEEL ERECTION OF THE LOGGIA AND THE EXTERIOR WALL FRAMING HAS BEGUN. THE INSTALLATION OF UTILITY SERVICES HAS BEGUN ALONG HESTER ST. THE 4TH FLOOR SOUTH SOMD CONCRETE HAS BEEN PLACED.

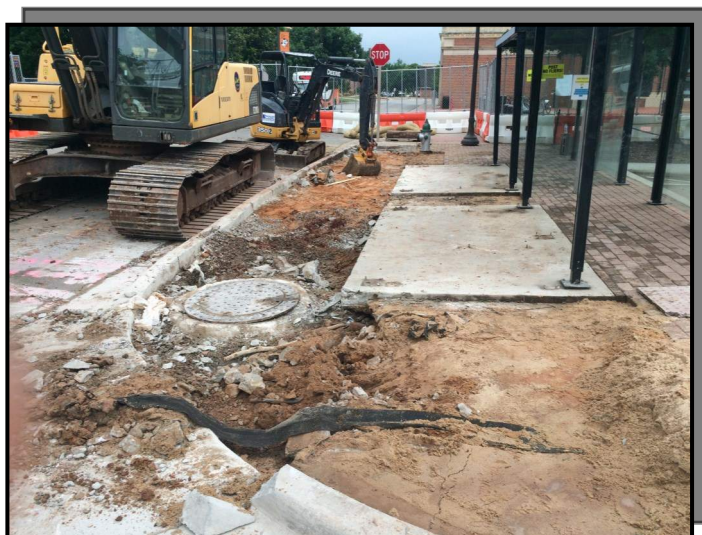
AS CONSTRUCTION CONTINUES, MANHATTAN WILL ISSUE MONTHLY PROGRESS REPORTS THROUGHOUT THE CONSTRUCTION PROCESS. TYPICALLY, THESE REPORTS ARE GENERATED AND TRANSMITTED ON THE LAST DAY OF EACH MONTH. THESE REPORTS ARE MEANT TO SERVE AS A TOOL FOR OSU LONG RANGE FACILITIES PLANNING TO DOCUMENT PRODUCTION AND KEEP INTERESTED PARTIES UPDATED WITH PROGRESS WHOM WOULD NOT OTHERWISE BE INVOLVED ON A DAILY BASIS.

MANHATTAN IS PROUD TO PARTNER WITH OSU LONG RANGE FACILITIES PLANNING, SPEARS SCHOOL OF BUSINESS, AND ELLIOT AND ASSOCIATES ON THIS PROJECT.

ISSUE NO.14



UTILITY INSTALLATION



PICTURED: UTILITY INSTALLATION ALONG
HESTER STREET

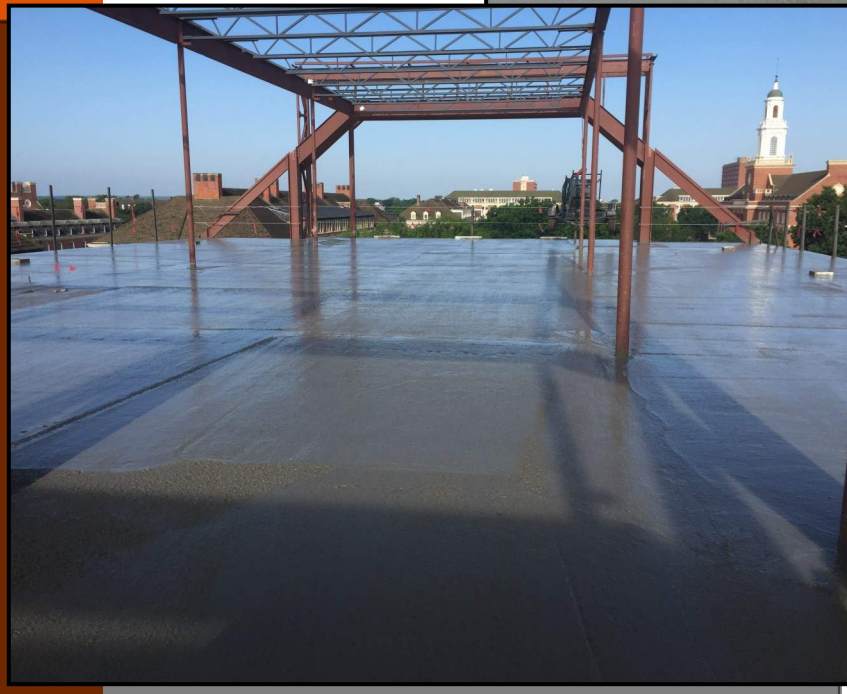




4TH FLOOR SOUTH SOMD PLACEMENT

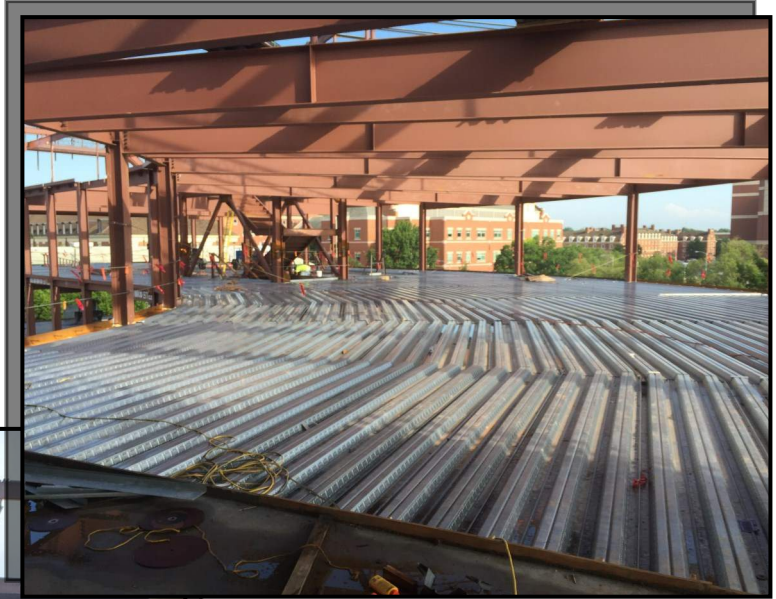


PICTURED: BEFORE AND AFTER PICTURES OF THE LIGHTWEIGHT CONCRETE PLACEMENT ON THE 4TH FLOOR SOUTH HALF SOMD





3RD AND 4TH FLOOR DECKING



PICTURED ABOVE:

3RD FLOOR NORTH

DECKING

PICTURED BELOW & LEFT:

4TH FLOOR DECKING





AERIAL PHOTO



MAY 2016



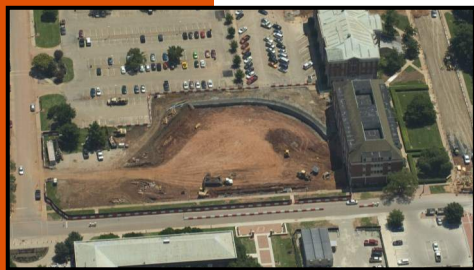
APRIL 2015



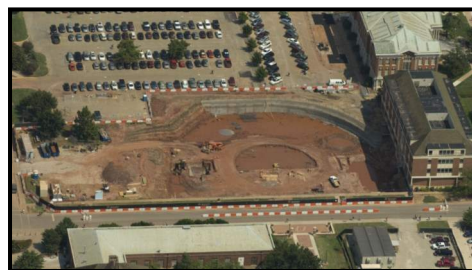
MAY 2015



JUNE 2015



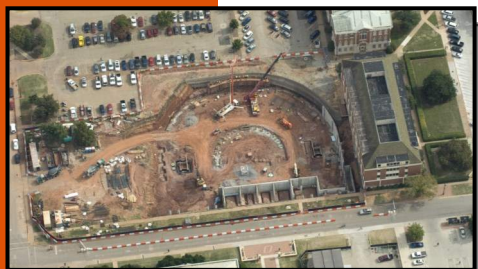
JULY 2015



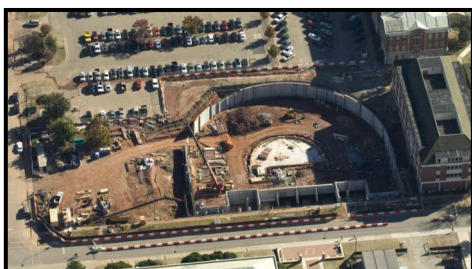
AUGUST 2015



SEPTEMBER 2015



OCTOBER 2015



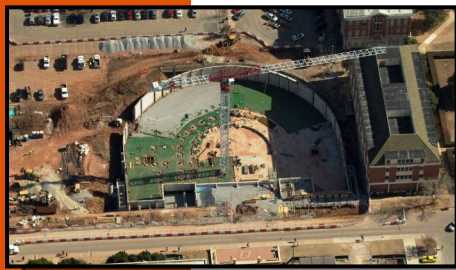
NOVEMBER 2015



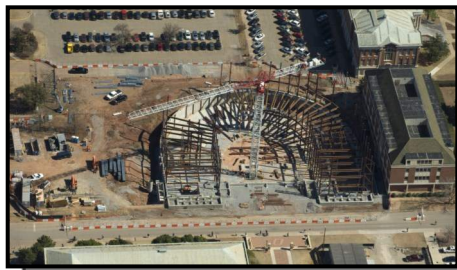
DECEMBER 2015



AERIAL PHOTO



JANUARY 2016



FEBRUARY 2016



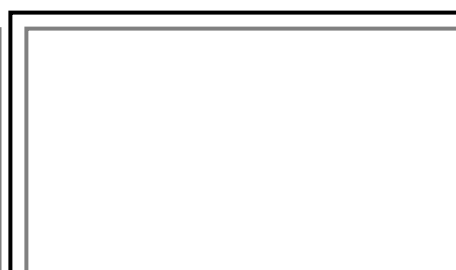
MARCH 2016



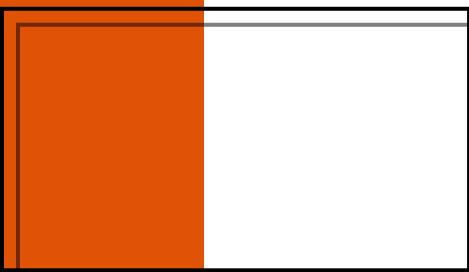
APRIL 2016



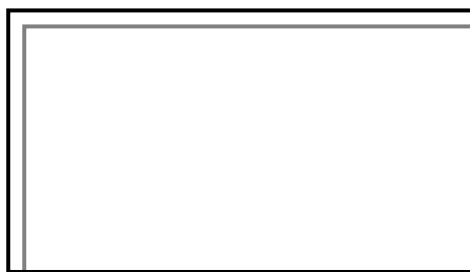
MAY 2016



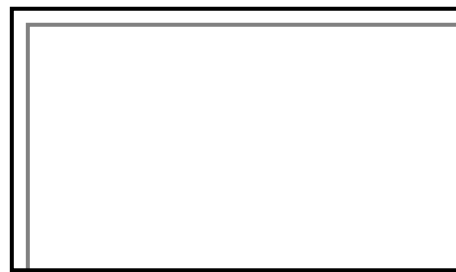
JUNE 2016



JULY 2016



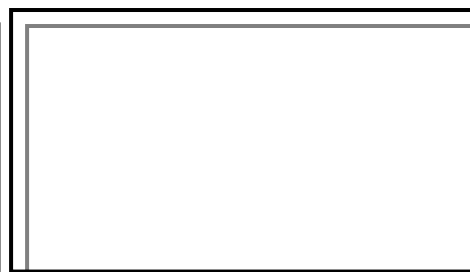
AUGUST 2016



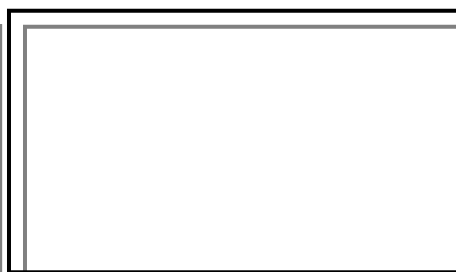
SEPTEMBER 2016



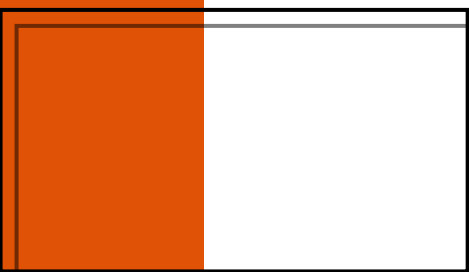
OCTOBER 2016



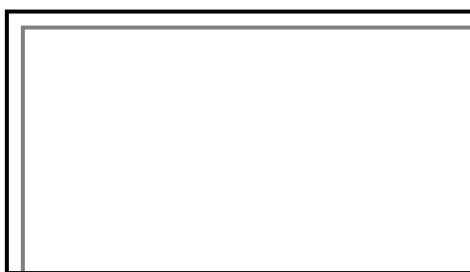
NOVEMBER 2016



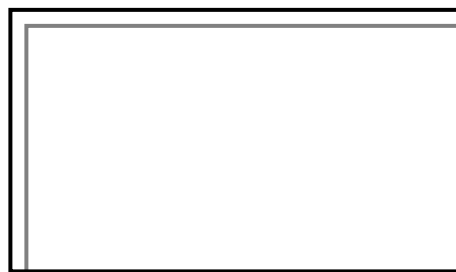
DECEMBER 2016



JANUARY 2017



FEBRUARY 2017



MARCH 2017



"The only thing better than recognizing a quality product is building one."

www.manhattanconstruction.com



UPCOMING ACTIVITIES FOR MAY

- CONT. STEEL ERECTION OF LOGGIA/LOGGIA BALCONIES AND PLAZA
- POUR 3RD AND 4TH FLOOR NORTH SOMDs, THE 4TH FLOOR LOGGIA CANOPY, THE 2ND FLOOR LOGGIA BALCONY, AND 1ST FLOOR LOGGIA AND PLAZA
- CONT. EXTERIOR WALL FRAMING
- START EXTERIOR SHEATHING/WINDOW BLOCKING
- START SLANT ROOF BENT PLATE INSTALLATION AND JOIST FRAMING
- START GUTTER FRAMING AND INSTALLATION
- START INSTALLING WEATHER BARRIER ON EXTERIOR WALLS

FOR A LIVE FEED OF THE PROJECT, VISIT:

[HTTP://SPEARS.OKSTATE.EDU/BUILDING/LIVE/](http://spears.okstate.edu/building/live/)

[HTTP://SPEARS.OKSTATE.EDU/BUILDING/](http://spears.okstate.edu/building/)



DETERMAN SCHEIRMAN, INC.
CONSULTING ENGINEERS



L R F P

Oklahoma State University,
Long Range Facilities Planning,



TM