



OSU SPEARS SCHOOL OF BUSINESS BUILDING

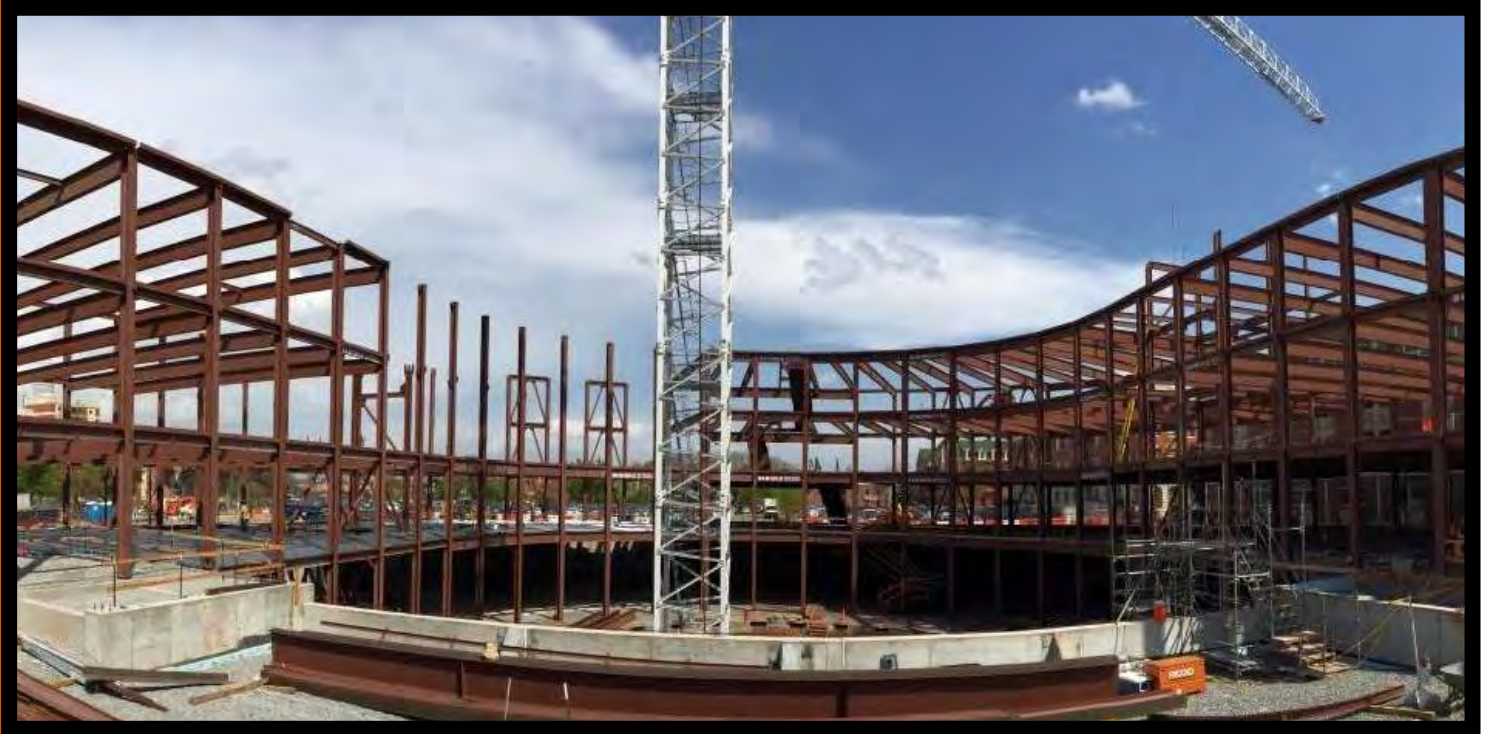
OKLAHOMA STATE UNIVERSITY



Manhattan

MARCH PROGRESS REPORT

3.31.2016



MONTHLY OVERVIEW

- CONTINUED TO STEEL ERECTION
- CON. WATERPROOFING BSMT WALLS
- CON. BACKFILL OF EAST & NORTH WALLS
- STARTED INSTALLING METAL DECKING ON NORTH AND SOUTH SIDES.
- PLACED SOUTH HALF 1ST FLOOR PENETRATIONS
- Poured the first floor slab on metal deck on the south half of the building

MONTHLY PROGRESS REPORT

PROGRESS REPORT: THIS MARCH, STRUCTURAL STEEL CONTINUED TO BE ERRECTED ON BOTH THE NORTH AND SOUTH SIDES OF THE BUILDING. WE ARE CURRENTLY ERRECTED THROUGH THE 4TH FLOOR ON THE SOUTH HALF OF THE NEW BUILDING, WITH THE ANTICIPATION OF BEING TOPPED UP BY THEN END OF NEXT MONTH. METAL DECKING WAS PLACED ON THE 1ST & 2ND FLOOR SOUTH HALF OF THE BUILDING AND THE 1ST FLOOR NORTH HALF WAS ALSO PLACED. WE ALSO HAVE OUR 1ST FLOOR SOMD Poured ON THE SOUTH SIDE.

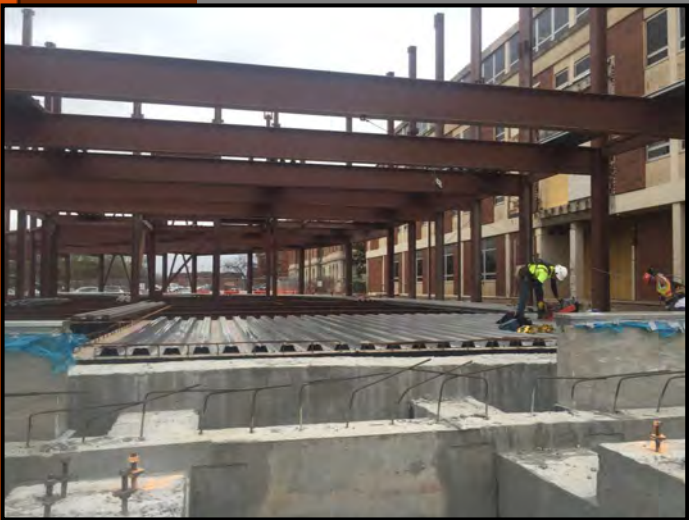
AS CONSTRUCTION CONTINUES, MANHATTAN WILL ISSUE MONTHLY PROGRESS REPORTS THROUGHOUT THE CONSTRUCTION PROCESS. TYPICALLY, THESE REPORTS ARE GENERATED AND TRANSMITTED ON THE LAST DAY OF EACH MONTH. THESE REPORTS ARE MEANT TO SERVE AS A TOOL FOR OSU LONG RANGE FACILITIES PLANNING TO DOCUMENT PRODUCTION AND KEEP INTERESTED PARTIES UPDATED WITH PROGRESS WHOM WOULD NOT OTHERWISE BE INVOLVED ON A DAILY BASIS.

MANHATTAN IS PROUD TO PARTNER WITH OSU LONG RANGE FACILITIES PLANNING, SPEARS SCHOOL OF BUSINESS, AND ELLIOT AND ASSOCIATES ON THIS PROJECT.

ISSUE NO.12

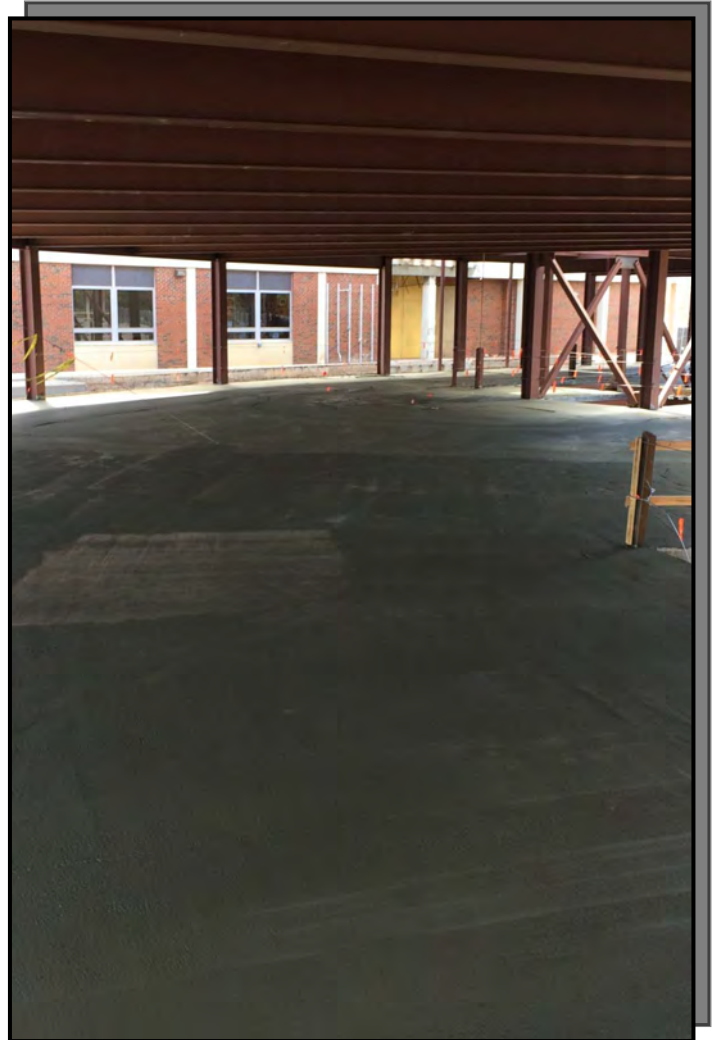


FIRST FLOOR DECKING



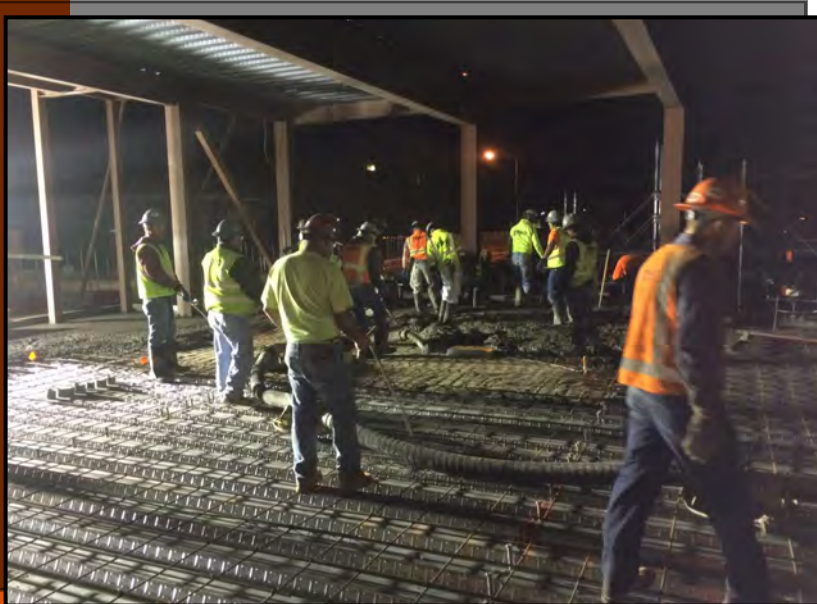
PICTURED ABOVE:
STEEL DECKING BEING
INSTALLED ON THE
FIRST FLOOR

PICTURED RIGHT:
FINISHED CONCRETE
ON FIRST FLOOR

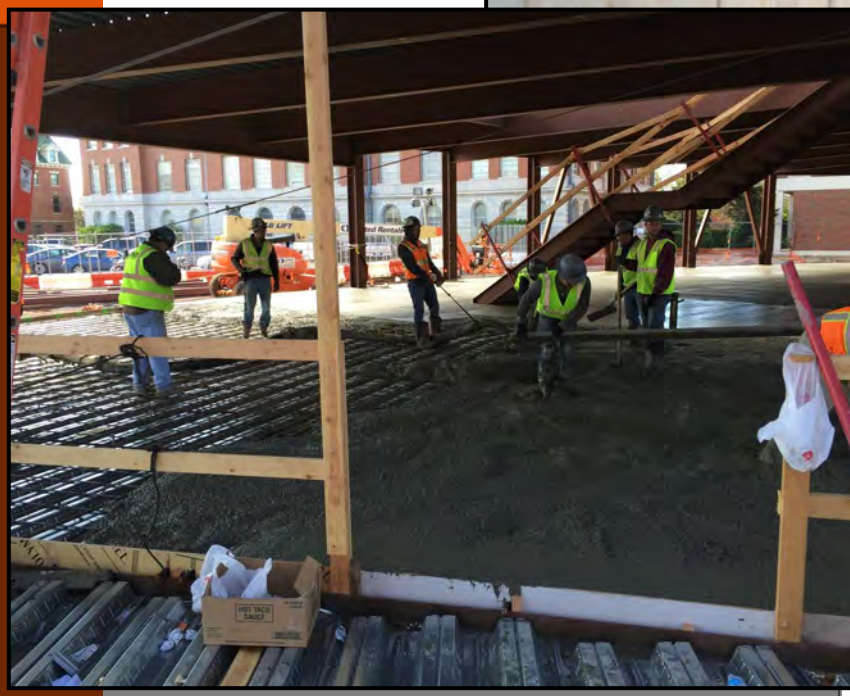




1ST FLOOR SLAB ON METAL DECK



PICTURED:
EARLY MORNING
CONCRETE
PLACEMENT

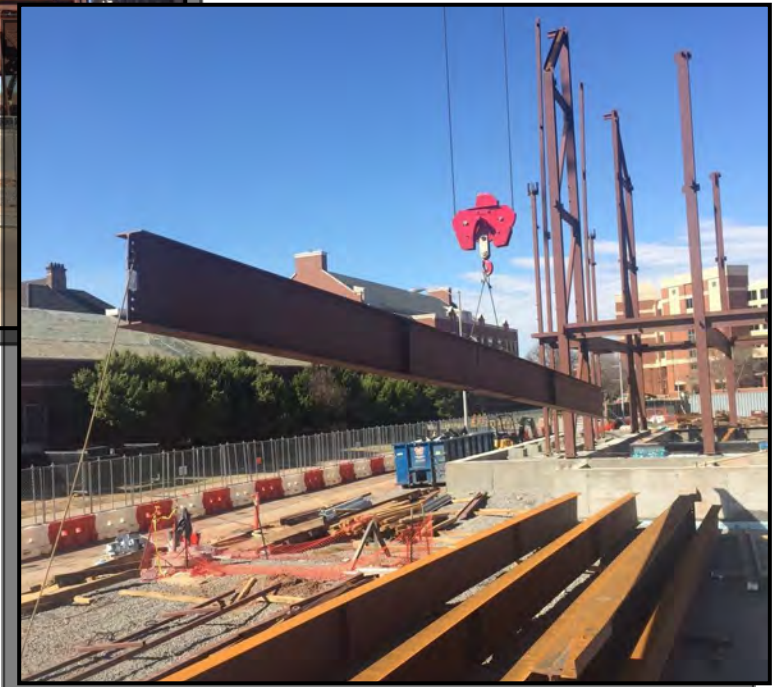




STEEL ERECTION



PICTURED:
STEEL ERECTION
CONTINUES

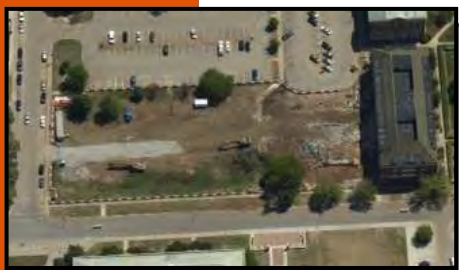




AERIAL PHOTO



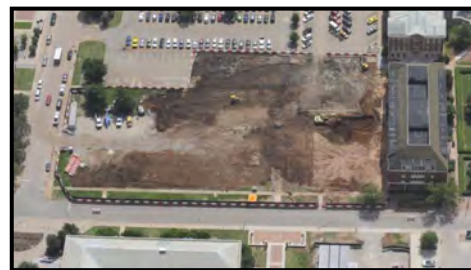
MARCH 2016



APRIL 2015



MAY 2015



JUNE 2015



JULY 2015



AUGUST 2015



SEPTEMBER 2015



OCTOBER 2015



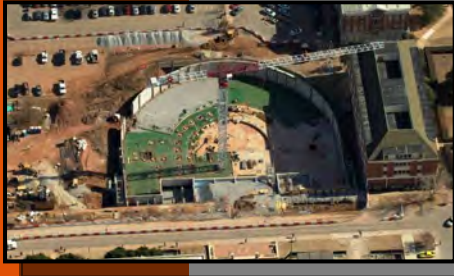
NOVEMBER 2015



DECEMBER 2015



AERIAL PHOTO



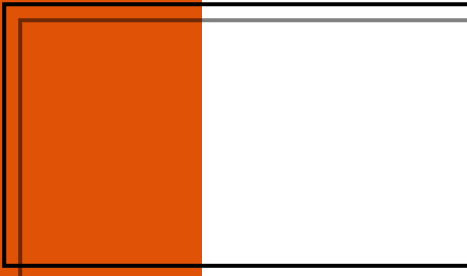
JANUARY 2016



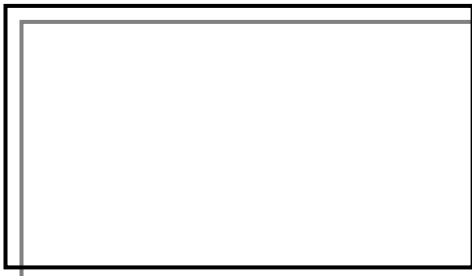
FEBRUARY 2016



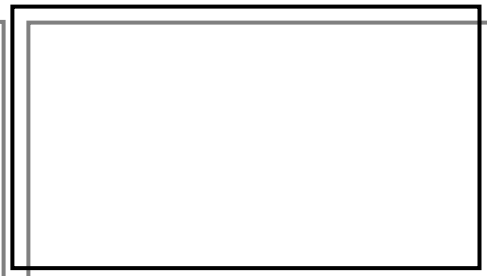
MARCH 2016



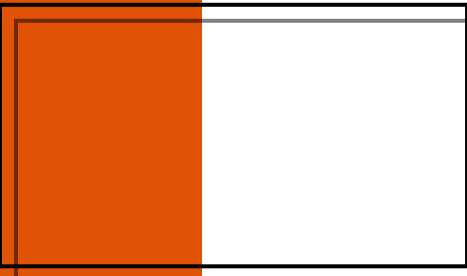
APRIL 2016



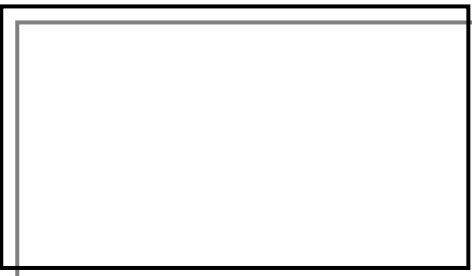
MAY 2016



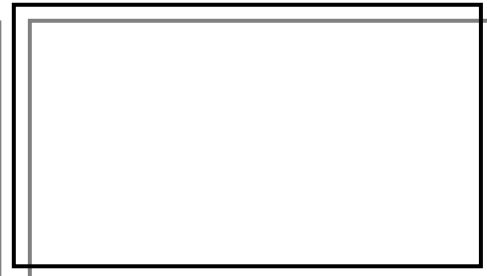
JUNE 2016



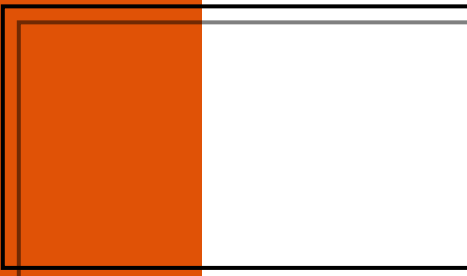
JULY 2016



AUGUST 2016



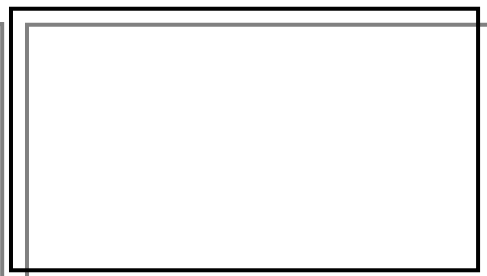
SEPTEMBER 2016



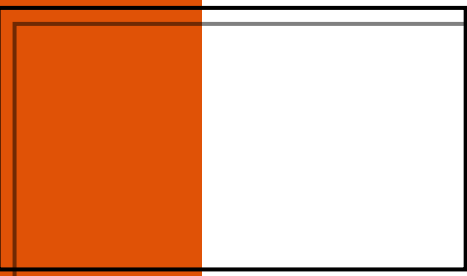
OCTOBER 2016



NOVEMBER 2016



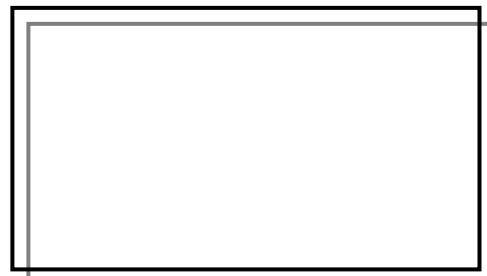
DECEMBER 2016



JANUARY 2017



FEBRUARY 2017



MARCH 2017



“The only thing better than recognizing a quality product is building one.”

www.manhattanconstruction.com



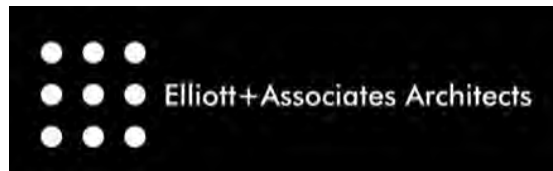
UPCOMING ACTIVITIES FOR APRIL

- CONTINUE ERECTING STRUCTURAL STEEL
- CONTINUE METAL DECK INSTALLATION
- POUR THE 2ND AND 3RD FLOOR SOUTH AND 1ST AND 2ND FLOOR NORTH, SLAB ON METAL DECKS
- CONTINUE WATERPROOFING AND BACKFILL
- START EXTERIOR WALL FRAMING FIRST FLOOR
- TOP OUT STEEL

FOR A LIVE FEED OF THE PROJECT, VISIT:

[HTTP://SPEARS.OKSTATE.EDU/BUILDING/LIVE/](http://spears.okstate.edu/building/live/)

[HTTP://SPEARS.OKSTATE.EDU/BUILDING/](http://spears.okstate.edu/building/)



DETERMAN SCHEIRMAN, INC.
CONSULTING ENGINEERS

L R F P
Oklahoma State University,
Long Range Facilities Planning,



TM