



OSU SPEARS SCHOOL OF BUSINESS BUILDING

OKLAHOMA STATE UNIVERSITY



JUNE PROGRESS REPORT

6.30.2017



MONTHLY OVERVIEW

- ◆ CONT. FRAMING AND ROCKING WALLS
- ◆ CONT. MEPP INSTALL
- ◆ INSTALL CABINETRY
- ◆ CONT. GFRC INSTALLATION
- ◆ STARTED FINAL COAT AT DORMERS
- ◆ CONT. INSTALL OF SLOT WINDOWS
- ◆ CONT. TERRAZZO ON 2ND AND BASEMENT
- ◆ CONT. EXTERIOR CONCRETE
- ◆ BEGAN INSTALLATION OF EXOTIC WOOD PANELS

MONTHLY PROGRESS REPORT

PROGRESS REPORT: This June, the exterior of the project site continues to change with sidewalks and seat wall footings being formed and poured on the east and southeast portion of the project. Work at the plaza stage continues with the installation of geofoam and concrete slab poured. GFRC installation continues on the exterior. The installation of slot windows and EIFS continues. The interior of the project progresses with finishes being installed on the 2nd, 3rd, and 4th floors. Terrazzo began in the basement. Installation of glass doors began on the 4th floor. Exotic wood panels were installed on the 3rd floor and the installation process began on the 4th floor. Installation of tile continues in the Crystal room and in the bathrooms throughout the building. The framing and drywall continues in the basement and 1st floor

AS CONSTRUCTION CONTINUES, MANHATTAN WILL ISSUE MONTHLY PROGRESS REPORTS THROUGHOUT THE CONSTRUCTION PROCESS. TYPICALLY, THESE REPORTS ARE GENERATED AND TRANSMITTED ON THE LAST DAY OF EACH MONTH. THESE REPORTS ARE MEANT TO SERVE AS A TOOL FOR OSU LONG RANGE FACILITIES PLANNING TO DOCUMENT PRODUCTION AND KEEP INTERESTED PARTIES UPDATED WITH PROGRESS WHOM WOULD NOT OTHERWISE BE INVOLVED ON A DAILY BASIS.

MANHATTAN IS PROUD TO PARTNER WITH OSU LONG RANGE FACILITIES PLANNING, SPEARS SCHOOL OF BUSINESS, AND ELLIOT AND ASSOCIATES ON THIS PROJECT.

ISSUE NO.27



CEILING



PICTURED ABOVE:

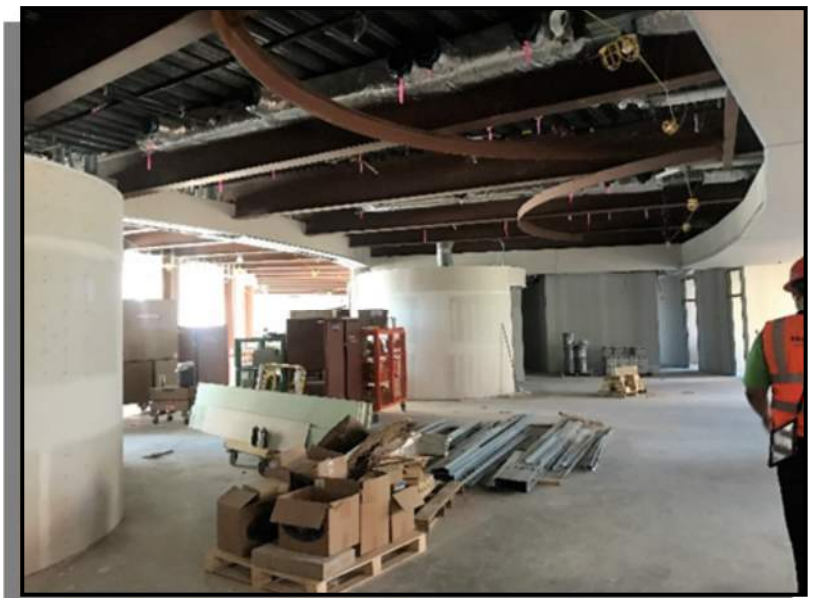
2ND FLOOR MASSEY CLASSROOM

PICTURED LEFT:

3RD FLOOR CORRIDOR CEILING GRID
AND SOFFITS

PICTURED BELOW:

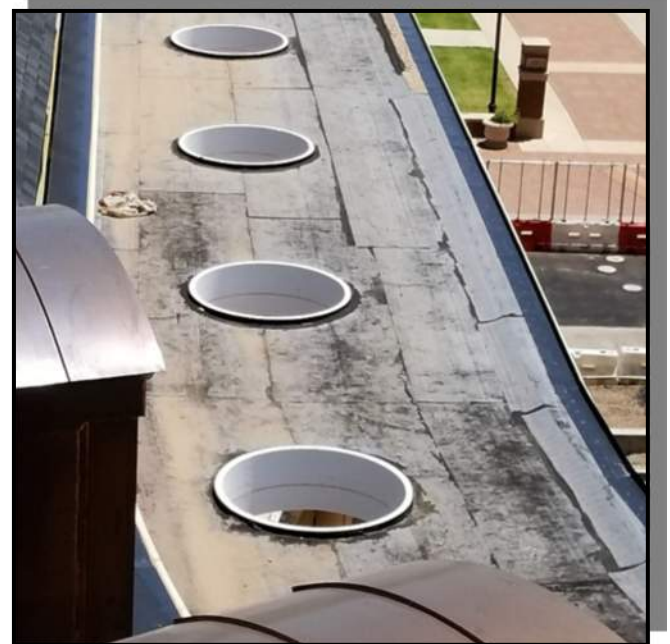
1ST FLOOR RIATA ROOM



EXTERIOR IMPROVEMENTS



PICTURED ABOVE:
PLAZA STAGE GEOFOAM



PICTURED RIGHT:
EIFS IN SKYLIGHTS

PICTURED BELOW:
LOGGIA BALCONY EIFS





EXTERIOR IMPROVEMENTS



PICTURED ABOVE:

CONCRETE IN STAGE AT PLAZA

PICTURED RIGHT:

NORTHEAST SEAT WALL CONCRETE
AND FORMS

PICTURED BELOW:

OLD BUSINESS SCHOOL SIGN DEMO





INTERIOR FRAMING, AND FINISHES



PICTURED ABOVE:

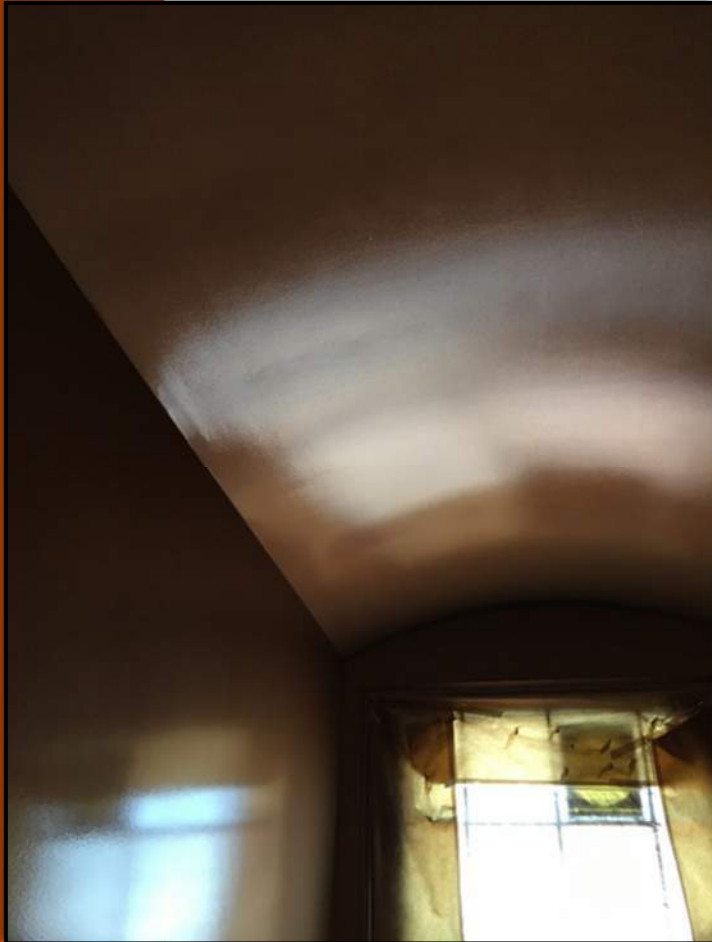
1ST FLOOR NORTH CORRIDOR
FRAMING

PICTURED LEFT:

4TH FLOOR RESTROOM METALLIC
COPPER PAINT IN DORMER

PICTURED BELOW:

WATSON TRADING FLOOR MARKER
BOARD FRAMING





INTERIOR WOOD WORK



PICTURED ABOVE:

3RD FLOOR ELEVATOR LOBBY SHEET
METAL AND TORZO PANELS

PICTURED RIGHT:

3RD FLOOR ZEBRA EXOTIC WOOD
PANELS

PICTURED BELOW:

INSTALLATION OF EXOTIC WOOD
PANELS IN ROOM 439





AERIAL PHOTOS



MAY 2017



APRIL 2015



MAY 2015



JUNE 2015



JULY 2015



AUGUST 2015



SEPTEMBER 2015



OCTOBER 2015



NOVEMBER 2015



DECEMBER 2015



AERIAL PHOTOS



JANUARY 2016



FEBRUARY 2016



MARCH 2016



APRIL 2016



MAY 2016



JUNE 2016



JULY 2016



AUGUST 2016



SEPTEMBER 2016



OCTOBER 2016



NOVEMBER 2016



DECEMBER 2016



JANUARY 2017



FEBRUARY 2017



MARCH 2017



AERIAL PHOTOS



APRIL 2017



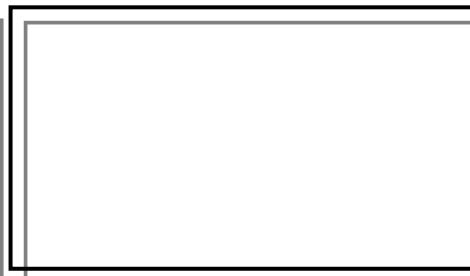
MAY 2017



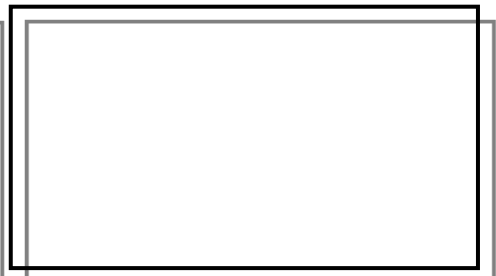
JUNE 2017



JULY 2017



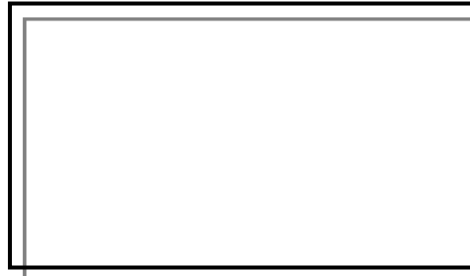
AUGUST 2017



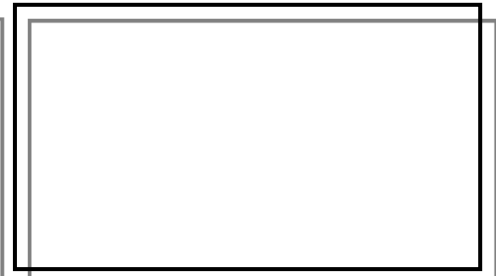
SEPTEMBER 2017



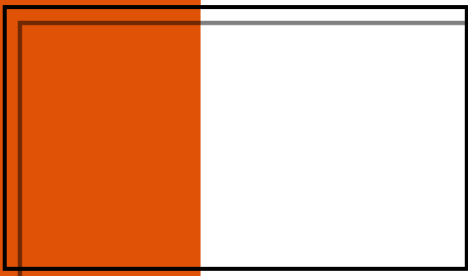
OCTOBER 2017



NOVEMBER 2017



DECEMBER 2017



JANUARY 2018



"The only thing better than recognizing a quality product is building one."

www.manhattanconstruction.com



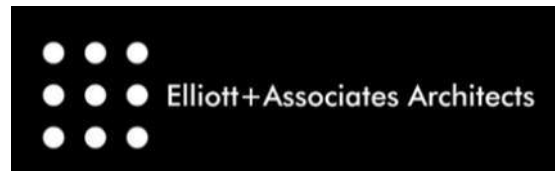
UPCOMING ACTIVITIES FOR JULY

- ◆ CONT. FRAMING AND ROCKING WALLS
- ◆ CONT. MEPF INSTALL
- ◆ BEGIN INSTALL OF TOILET PARTITIONS/ACCESSORIES
- ◆ CONT. GFRC INSTALLATION
- ◆ START DROPPING CEILING TILES
- ◆ CONT. TERRAZZO ON 2ND AND BASEMENT
- ◆ CONT. EXTERIOR CONCRETE
- ◆ CONTINUE INSTALLATION OF WOOD PANELS

FOR A LIVE FEED OF THE PROJECT, VISIT:

[HTTP://SPEARS.OKSTATE.EDU/BUILDING/LIVE/](http://spears.okstate.edu/building/live/)

[HTTP://SPEARS.OKSTATE.EDU/BUILDING/](http://spears.okstate.edu/building/)



DETERMAN SCHEIRMAN, INC.
CONSULTING ENGINEERS



L R F P

Oklahoma State University,
Long Range Facilities Planning,



TM



MANHATTAN PROJECT TEAM



PROJECT DIRECTOR
CRAIG ABBOTT



PROJECT MANAGER
CHAD KENDRICK



SR. SUPERINTENDENT
JUSTIN FEGEL



SUPERINTENDENT
PAUL MCGUIRE



**ASSISTANT PROJECT
MANAGER**
ZAC MCGRATH



ESTIMATOR
PHIL BRANDT



SAFETY MANAGER
JUSTIN TALBERT



PROJECT ENGINEER
MICHAEL LAKE



PROJECT ENGINEER
DOMINIQUE HARRIS



LABOR FOREMAN
JULIO MORALES



**FIELD OFFICE
MANAGER**
SHARON MUSE



INTERN
DONALD BLAIR



INTERN
CONNOR FINKHOUSE



OSU SPEARS SCHOOL OF BUSINESS BUILDING

OKLAHOMA STATE UNIVERSITY



JUNE PROGRESS REPORT

6.30.2017



MONTHLY OVERVIEW

- ◆ CONT. FRAMING AND ROCKING WALLS
- ◆ CONT. MEPF INSTALL
- ◆ INSTALL CABINETRY
- ◆ CONT. GFRC INSTALLATION

- ◆ STARTED FINAL COAT AT DORMERS
- ◆ CONT. INSTALL OF SLOT WINDOWS
- ◆ CONT. TERRAZZO ON 2ND AND BASEMENT
- ◆ CONT. EXTERIOR CONCRETE
- ◆ BEGAN INSTALLATION OF EXOTIC WOOD PANELS

MONTHLY PROGRESS REPORT

PROGRESS REPORT: This June, the exterior of the project site continues to change with sidewalks and seat wall footings being formed and poured on the east and southeast portion of the project. Work at the plaza stage continues with the installation of geofoam and concrete slab poured. GFRC installation continues on the exterior. The installation of slot windows and EIFS continues. The interior of the project progresses with finishes being installed on the 2nd, 3rd, and 4th floors. Terrazzo began in the basement. Installation of glass doors began on the 4th floor. Exotic wood panels were installed on the 3rd floor and the installation process began on the 4th floor. Installation of tile continues in the Crystal room and in the bathrooms throughout the building. The framing and drywall continues in the basement and 1st floor

AS CONSTRUCTION CONTINUES, MANHATTAN WILL ISSUE MONTHLY PROGRESS REPORTS THROUGHOUT THE CONSTRUCTION PROCESS. TYPICALLY, THESE REPORTS ARE GENERATED AND TRANSMITTED ON THE LAST DAY OF EACH MONTH. THESE REPORTS ARE MEANT TO SERVE AS A TOOL FOR OSU LONG RANGE FACILITIES PLANNING TO DOCUMENT PRODUCTION AND KEEP INTERESTED PARTIES UPDATED WITH PROGRESS WHOM WOULD NOT OTHERWISE BE INVOLVED ON A DAILY BASIS.

MANHATTAN IS PROUD TO PARTNER WITH OSU LONG RANGE FACILITIES PLANNING, SPEARS SCHOOL OF BUSINESS, AND ELLIOT AND ASSOCIATES ON THIS PROJECT.

ISSUE NO.26



CEILING



PICTURED ABOVE:

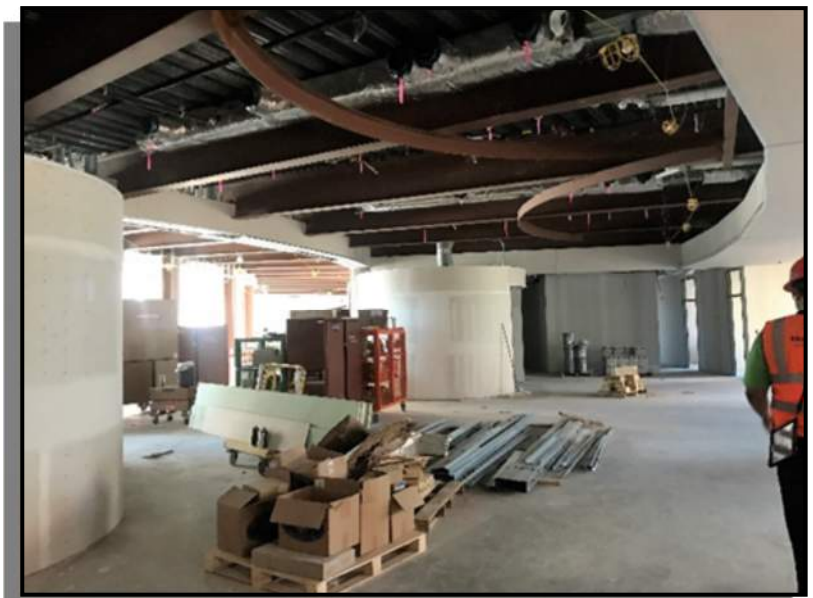
2ND FLOOR MASSEY CLASSROOM

PICTURED LEFT:

**3RD FLOOR CORRIDOR CEILING GRID
AND SOFFITS**

PICTURED BELOW:

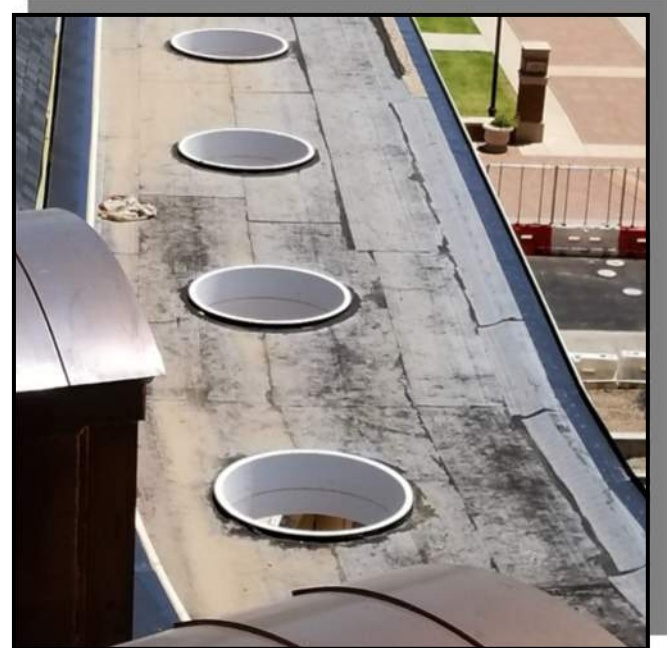
1ST FLOOR RIATA ROOM



EXTERIOR IMPROVEMENTS



PICTURED ABOVE:
PLAZA STAGE GEOFOAM



PICTURED RIGHT:
EIFS IN SKYLIGHTS

PICTURED BELOW:
LOGGIA BALCONY EIFS





EXTERIOR IMPROVEMENTS



PICTURED ABOVE:

CONCRETE IN STAGE AT PLAZA

PICTURED RIGHT:

NORTHEAST SEAT WALL CONCRETE
AND FORMS

PICTURED BELOW:

OLD BUSINESS SCHOOL SIGN DEMO





INTERIOR FRAMING, AND FINISHES



PICTURED ABOVE:

1ST FLOOR NORTH CORRIDOR
FRAMING

PICTURED LEFT:

4TH FLOOR RESTROOM METALLIC
COPPER PAINT IN DORMER

PICTURED BELOW:

WATSON TRADING FLOOR MARKER
BOARD FRAMING





INTERIOR WOOD WORK



PICTURED ABOVE:

3RD FLOOR ELEVATOR LOBBY SHEET
METAL AND TORZO PANELS

PICTURED RIGHT:

3RD FLOOR ZEBRA EXOTIC WOOD
PANELS

PICTURED BELOW:

INSTALLATION OF EXOTIC WOOD
PANELS IN ROOM 439





AERIAL PHOTOS



MAY 2017



APRIL 2015



MAY 2015



JUNE 2015



JULY 2015



AUGUST 2015



SEPTEMBER 2015



OCTOBER 2015



NOVEMBER 2015



DECEMBER 2015



AERIAL PHOTOS



JANUARY 2016



FEBRUARY 2016



MARCH 2016



APRIL 2016



MAY 2016



JUNE 2016



JULY 2016



AUGUST 2016



SEPTEMBER 2016



OCTOBER 2016



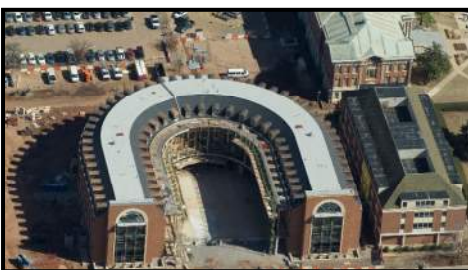
NOVEMBER 2016



DECEMBER 2016



JANUARY 2017



FEBRUARY 2017



MARCH 2017



AERIAL PHOTOS



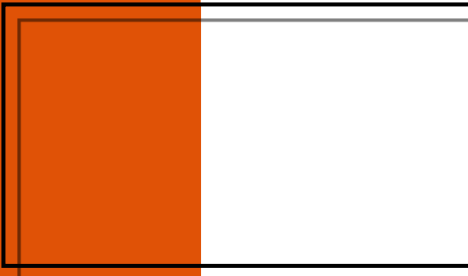
APRIL 2017



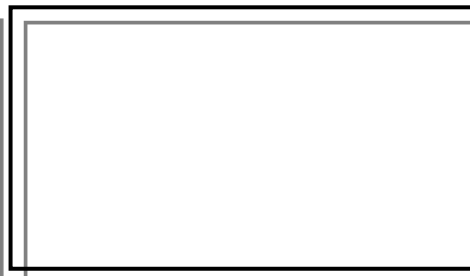
MAY 2017



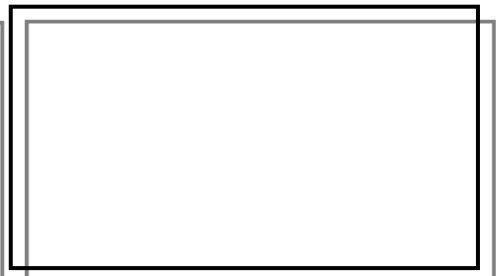
JUNE 2017



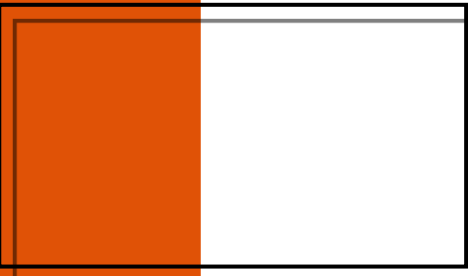
JULY 2017



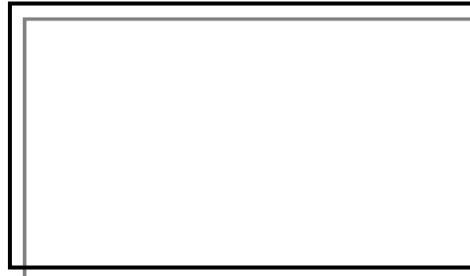
AUGUST 2017



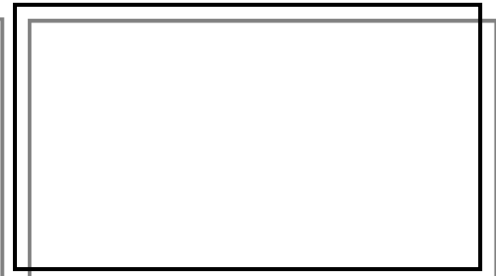
SEPTEMBER 2017



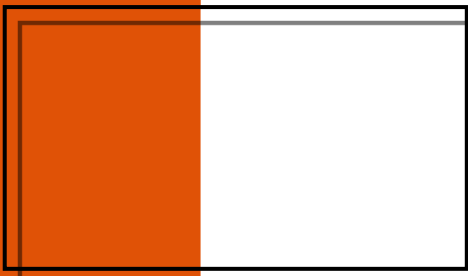
OCTOBER 2017



NOVEMBER 2017



DECEMBER 2017



JANUARY 2018



"The only thing better than recognizing a quality product is building one."

www.manhattanconstruction.com



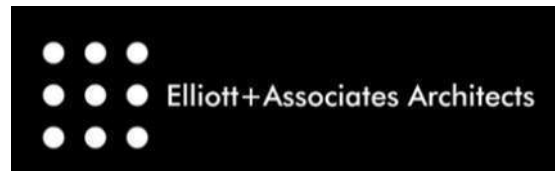
UPCOMING ACTIVITIES FOR JULY

- ◆ CONT. FRAMING AND ROCKING WALLS
- ◆ CONT. MEPF INSTALL
- ◆ BEGIN INSTALL OF TOILET PARTITIONS/ACCESSORIES
- ◆ CONT. GFRC INSTALLATION
- ◆ START DROPPING CEILING TILES
- ◆ CONT. TERRAZZO ON 2ND AND BASEMENT
- ◆ CONT. EXTERIOR CONCRETE
- ◆ CONTINUE INSTALLATION OF WOOD PANELS

FOR A LIVE FEED OF THE PROJECT, VISIT:

[HTTP://SPEARS.OKSTATE.EDU/BUILDING/LIVE/](http://spears.okstate.edu/building/live/)

[HTTP://SPEARS.OKSTATE.EDU/BUILDING/](http://spears.okstate.edu/building/)



DETERMAN SCHEIRMAN, INC.
CONSULTING ENGINEERS



L R F P

Oklahoma State University,
Long Range Facilities Planning,



TM