



# OSU SPEARS SCHOOL OF BUSINESS BUILDING

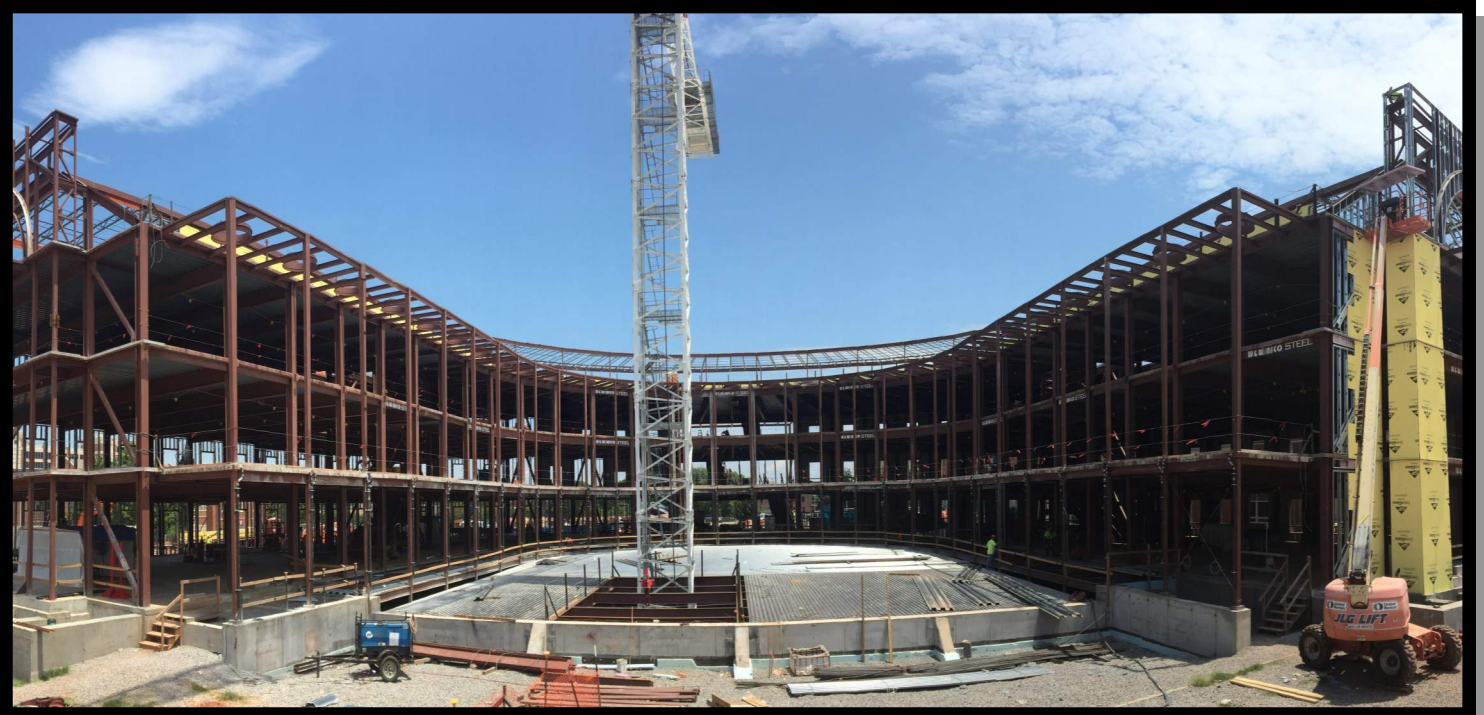
OKLAHOMA STATE UNIVERSITY



Manhattan

## JUNE PROGRESS REPORT

6.30.2016



### MONTHLY OVERVIEW

- CONT. EXTERIOR WALL FRAMING
- STARTED INSTALLING THE PLAZA DECKING
- STARTED BASEMENT DUCTWORK/PLUMBING
- CONT. SHEATHING AND WEATHER BARRIER
- INSTALLED THE METAL DECKING FOR THE 2ND FLOOR LOGGIA BALCONY
- POURED THE 3RD AND 4TH FLOOR NORTH SOMDS, THE 2ND FLOOR LOGGIA BALCONY, AND 2ND & 3RD FLOOR BALCONIES
- ERECTED THE LOGGIA AND PLAZA STRUCTURAL STEEL
- STARTED INSTALLING BRICK MASONRY

## MONTHLY PROGRESS REPORT

**PROGRESS REPORT:** THIS JUNE, THE 3RD & 4TH FLOOR NORTH SOMDS WERE POURED ALONG WITH THE 1ST FLOOR EAST VESTIBULE SOG, 2ND & 3RD FLOOR BALCONIES, & 2ND FLOOR LOGGIA BALCONY. INSTALLATION OF DUCTWORK IN THE BASEMENT HAS BEGUN & STRUCTURAL STEEL ERECTION CONTINUES. EXTERIOR WALL FRAMING CONTINUES & IS COMPLETE FROM THE 1ST-3RD FLOOR ON A/Z LINE. SHEATHING AND WEATHER BARRIER HAS BEEN COMPLETED ON THE SOUTH SIDE OF THE BUILDING UP TO THE EAST VESTIBULE & BRICK MASONRY HAS STARTED.

AS CONSTRUCTION CONTINUES, MANHATTAN WILL ISSUE MONTHLY PROGRESS REPORTS THROUGHOUT THE CONSTRUCTION PROCESS. TYPICALLY, THESE REPORTS ARE GENERATED AND TRANSMITTED ON THE LAST DAY OF EACH MONTH. THESE REPORTS ARE MEANT TO SERVE AS A TOOL FOR OSU LONG RANGE FACILITIES PLANNING TO DOCUMENT PRODUCTION AND KEEP INTERESTED PARTIES UPDATED WITH PROGRESS WHOM WOULD NOT OTHERWISE BE INVOLVED ON A DAILY BASIS.

MANHATTAN IS PROUD TO PARTNER WITH OSU LONG RANGE FACILITIES PLANNING, SPEARS SCHOOL OF BUSINESS, AND ELLIOT AND ASSOCIATES ON THIS PROJECT.



## EXTERIOR FRAMING, SHEATHING, & WEATHER BARRIER

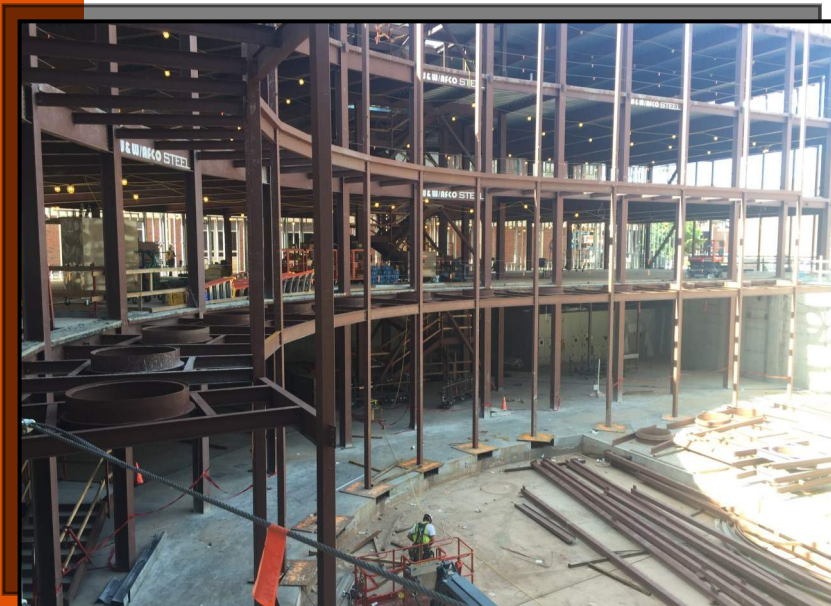


PICTURED:  
NEWLY INSTALLED EX-  
TERIOR FRAMING,  
SHEATHING, AND  
WEATHER BARRIER ON  
THE SOUTH & EAST  
SIDES OF THE NEW  
BUILDING





## LOGGIA/PLAZA STEEL ERECTION & DECKING



### PICTURED:

STEEL ERECTION AND METAL DECKING PROGRESS THROUGHOUT THE JUNE ON THE LOGGIA & PLAZA





## SOMD CONCRETE POURS



**PICTURED ABOVE:**  
2ND FLR LOGGIA BALCONY.

**PICTURED LEFT & BELOW:**  
BEFORE AND AFTER PICTURES OF THE 4TH FLOOR NORTH SOMD



## BRICK MASONRY & BASEMENT PLUMBING/ DUCTWORK

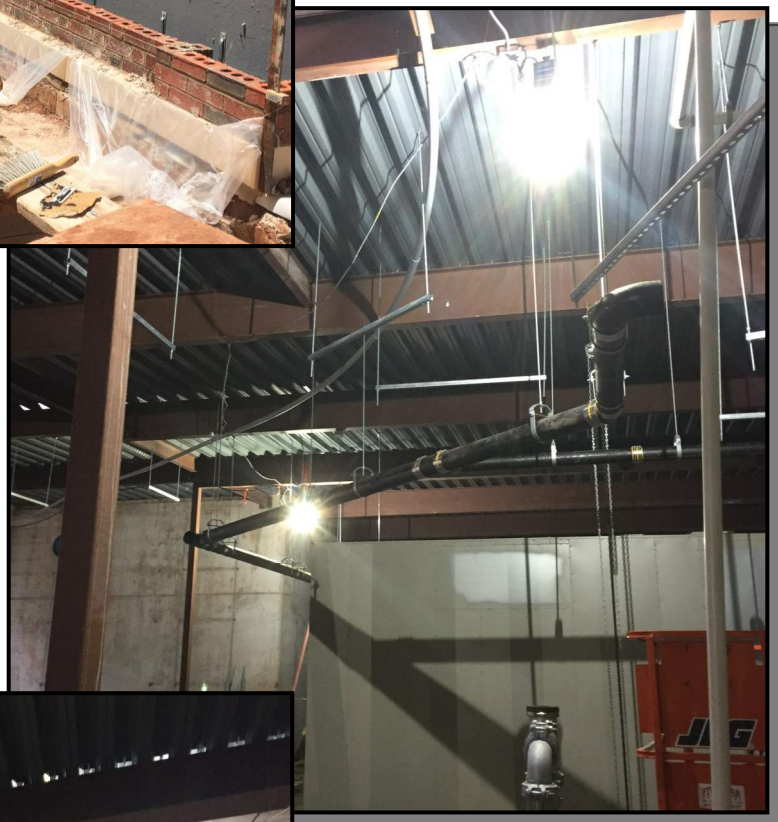


**PICTURED ABOVE:**

THE START OF BRICK  
MASONRY ALONG THE  
SOUTH WALL

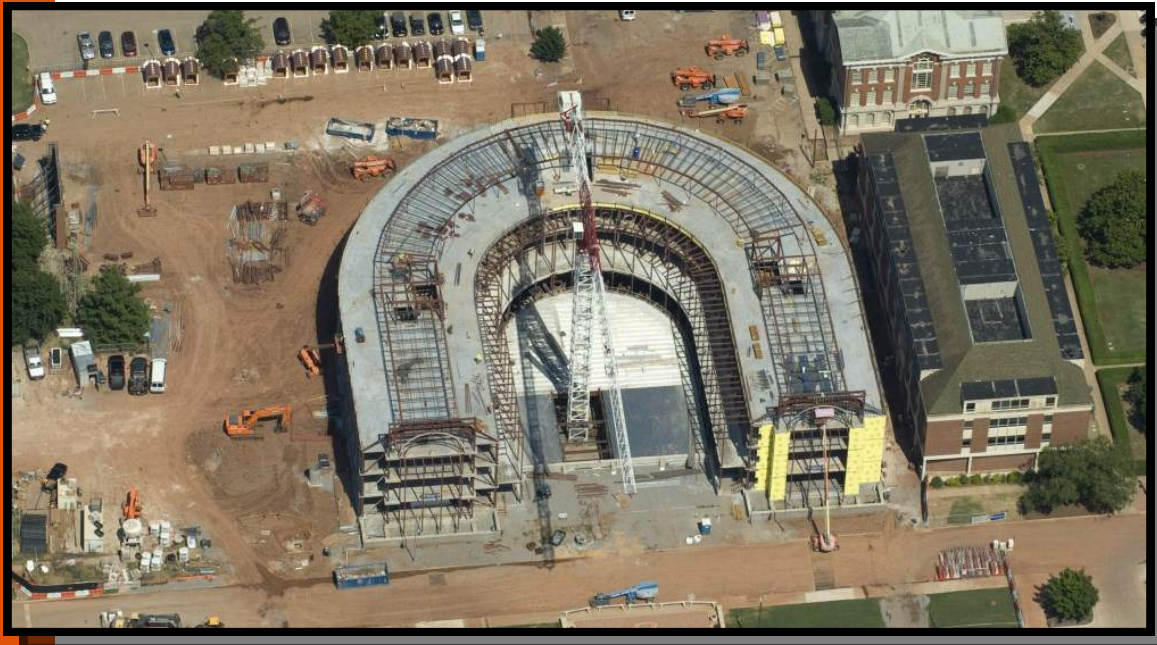
**PICTURED RIGHT & BE-  
LOW:**

DUCTWORK & PLUMBING  
ROUGH-IN IN THE BASE-





# AERIAL PHOTO



## JUNE 2016



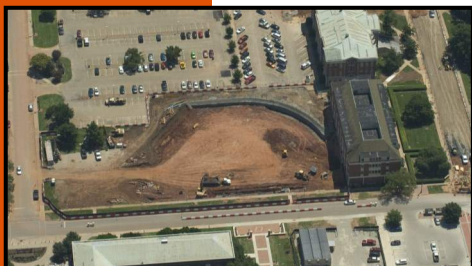
APRIL 2015



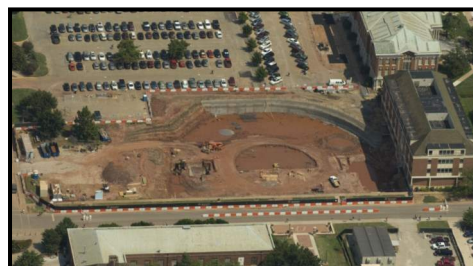
MAY 2015



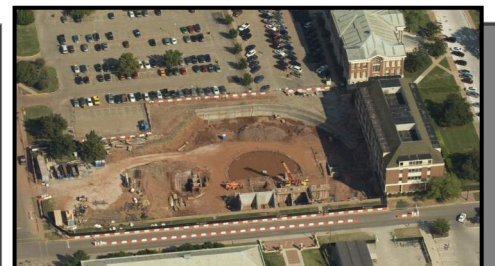
JUNE 2015



JULY 2015



AUGUST 2015



SEPTEMBER 2015



OCTOBER 2015



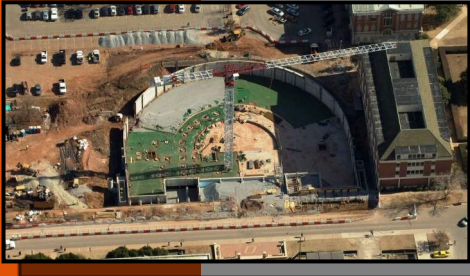
NOVEMBER 2015



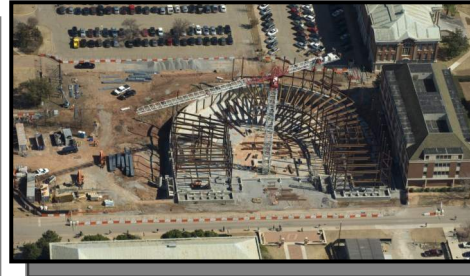
DECEMBER 2015



# AERIAL PHOTO



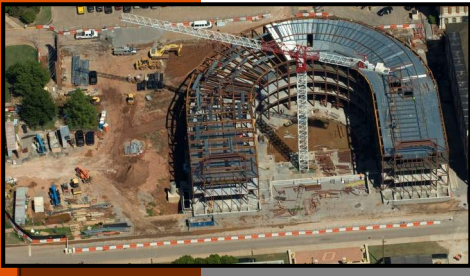
JANUARY 2016



FEBRUARY 2016



MARCH 2016



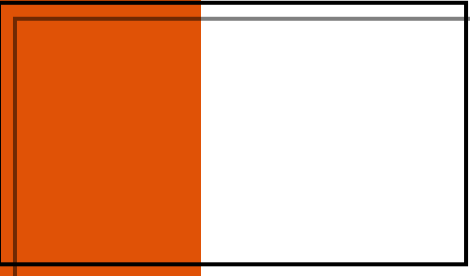
APRIL 2016



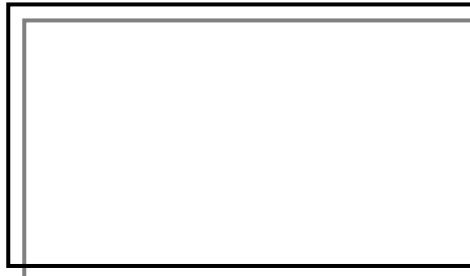
MAY 2016



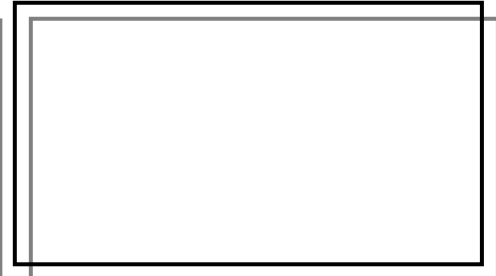
JUNE 2016



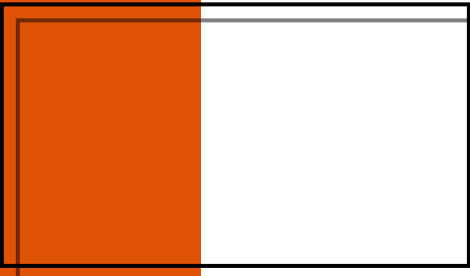
JULY 2016



AUGUST 2016



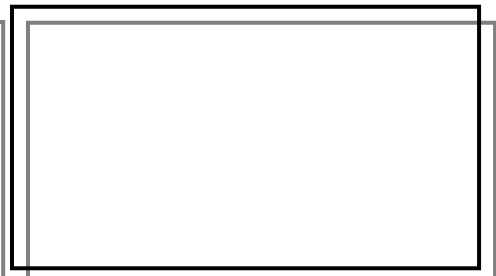
SEPTEMBER 2016



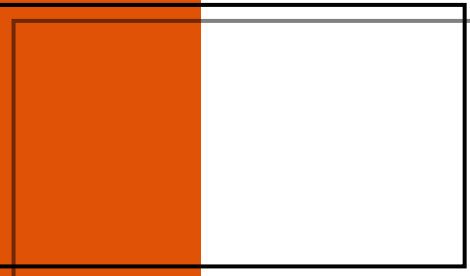
OCTOBER 2016



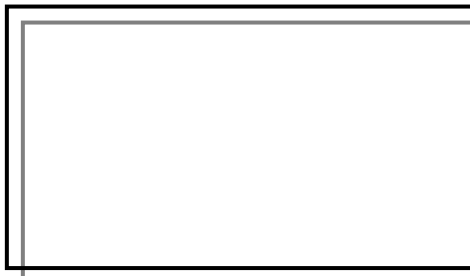
NOVEMBER 2016



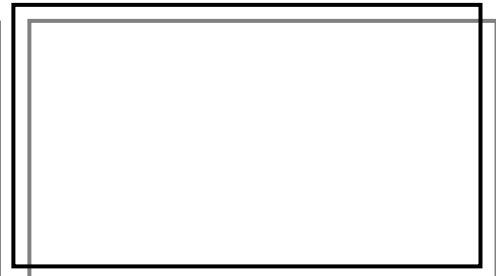
DECEMBER 2016



JANUARY 2017



FEBRUARY 2017



MARCH 2017



"The only thing better than recognizing a quality product is building one."

www.manhattanconstruction.com



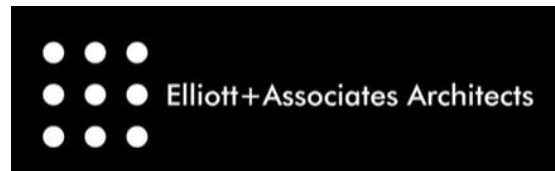
## UPCOMING ACTIVITIES FOR JULY

- START 1ST FLOOR PLAZA AND LOGGIA FRAMING
- CONT. BASEMENT DUCTWORK AND RISERS
- CONT. EXTERIOR WALL FRAMING
- CONT. EXTERIOR WALL SHEATHING AND BEGINNING INSIDE RADIUS
- CONT. WEATHER BARRIER ON EXTERIOR WALLS AND BEGINNING INTERIOR RADIUS
- CONT. BRICK MASONRY
- START ROOF FRAMING, DECKING AND DETAIL
- CONT. FRAMING AND INSTALLING WOOD GUTTER TROUGHS

FOR A LIVE FEED OF THE PROJECT, VISIT:

[HTTP://SPEARS.OKSTATE.EDU/BUILDING/LIVE/](http://spears.okstate.edu/building/live/)

[HTTP://SPEARS.OKSTATE.EDU/BUILDING/](http://spears.okstate.edu/building/)



**DETERMAN SCHEIRMAN, INC.**  
CONSULTING ENGINEERS



**L R F P**

Oklahoma State University,  
Long Range Facilities Planning,



TM