



# OSU SPEARS SCHOOL OF BUSINESS BUILDING

OKLAHOMA STATE UNIVERSITY



## JUNE PROGRESS REPORT

6.30.2015



### MONTHLY OVERVIEW

- PROGRESS CONTINUES ON THE MORRILL STREET UTILITIES
- COMPLETED DEMOLITION OF STACKS
- AWARD OF BID PACKAGE II
- DELIVERY OF MCC JOB OFFICE TRAILER
- ALL CHILLED WATER CONNECTIONS TO BUILDINGS COMPLETED
- STARTED EXCAVATION FOR RETENTION SYSTEM
- STARTED INSTALLATION OF RETENTION SYSTEM

## MONTHLY PROGRESS REPORT

AS CONSTRUCTION CONTINUES, MANHATTAN WILL ISSUE MONTHLY PROGRESS REPORTS THROUGHOUT THE CONSTRUCTION PROCESS. TYPICALLY, THESE REPORTS ARE GENERATED AND TRANSMITTED ON THE LAST DAY OF EACH MONTH. THESE REPORTS ARE MEANT TO SERVE AS A TOOL FOR OSU LONG RANGE FACILITIES PLANNING TO DOCUMENT PRODUCTION AND KEEP INTERESTED PARTIES UPDATED WITH PROGRESS WHOM WOULD NOT OTHERWISE BE INVOLVED ON A DAILY BASIS.

**PROGRESS REPORT:** THE CHILLED WATER LINES THAT RUN THROUGH THE PROJECT AREA HAVE BEEN CAPPED SO EXCAVATION CAN START. THE MCC JOBSITE TRAILER HAS NOW BEEN PUT TOGETHER AND IS STARTING TO FEEL LIKE HOME. NOW THAT EXCAVATION AND INSTALLATION OF THE RETENTION SYSTEM HAVE STARTED, YOU CAN SEE THE NEW BUILDING'S FOOTPRINT TAKING SHAPE.

MANHATTAN IS PROUD TO PARTNER WITH OSU LONG RANGE FACILITIES PLANNING, SPEARS SCHOOL OF BUSINESS, AND ELLIOT AND ASSOCIATES ON THIS PROJECT.

ISSUE NO.03



# DEMOLITION/EXCAVATION



**PICTURED:** COMPLETION OF THE STACK DEMOLITION AND STARTING EXCAVATION FOR THE RETENTION SYSTEM.





# DUCT BANK INSTALLATION



PICTURED: ELECTRICAL DUCT BANK ON THE EAST SIDE OF MORRILL





## JOB TRAILER SETUP

**PICTURED RIGHT:** ARRIVAL OF GRAVEL FOR TRAILER COMPOUND



**PICTURED LEFT:** SITE PREPPED FOR TRAILER ARRIVAL

**PICTURED RIGHT:** INTERNS BUILDING DECK WITH ROOF FOR JOB TRAILER



**PICTURED LEFT:** FINISHED JOB TRAILER AREA



## CHILLED WATER LINES



PICTURED LEFT:  
FINAL CHILLED  
WATER TIE-IN BEFORE  
EXCAVATION COULD  
START



PICTURED RIGHT:  
CUT AND CAP OF  
EXISTING WATER  
LINE



# MONTHLY PROGRESS MEETINGS



**PICTURED LEFT:**  
PRECONSTRUCTION  
MEETING WITH KERNS  
CONSTRUCTION  
(EXCAVATION) AND  
HAYWARD BAKER  
(RETENTION SYSTEM)



**PICTURED RIGHT:**  
OWNER/ARCHITECT  
MEETING, GOING OVER  
EXTERIOR FINISHES  
(BRICK COLOR,  
WAINSCOT, CAP STONES,  
CAPITOLS, ETC.)



# MONTHLY PROGRESS



**PICTURED ABOVE:** PANORAMIC VIEW OF JOBSITE TAKEN FROM HESTER ST.

**PICTURED BELOW:** ARRIVAL OF STEEL FOR RETENTION SYSTEM



# RETENTION SYSTEM



PICTURED: PLACEMENT OF PILES FOR RETENTION SYSTEM



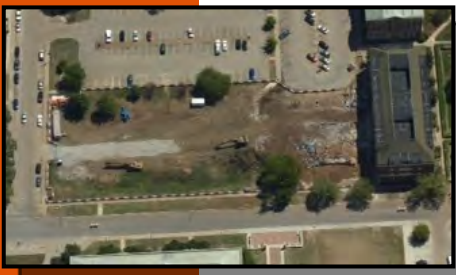




# AERIAL PHOTO



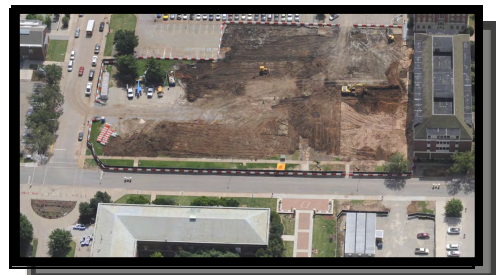
## JUNE 2015



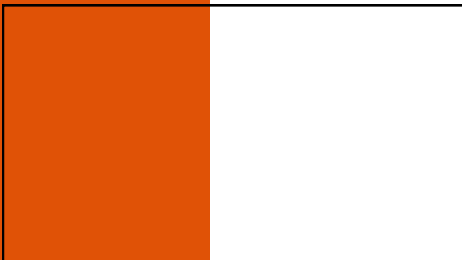
APRIL 2015



MAY 2015



JUNE 2015



JULY 2015



AUGUST 2015



SEPTEMBER 2015



"The only thing better than recognizing a quality product is building one."

www.manhattanconstruction.com



## MANHATTAN PROJECT TEAM

SR. VICE PRESIDENT, OKC  
MARK O'REAR

PROJECT DIRECTOR  
KYLE NELSON

PROJECT MANAGER  
CHAD KENDRICK

SR. SUPERINTENDENT  
JUSTIN FEGEL

SUPERINTENDENT  
PAUL MCGUIRE

ASSISTANT PROJECT MANAGER  
ZAC MCGRATH

ASST. SUPERINTENDENT/SAFETY  
ENGINEER  
BEN HOBSON

PROJECT ENGINEER  
BRANDON POINDEXTER

FIELD OFFICE MANAGER  
SHARON MUSE

ESTIMATOR  
PHIL BRANDT

INTERNS  
JOSHUA DEIBERT

AARON KIRKPATRICK

KYLE WANZER

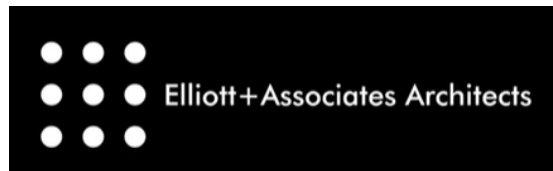
## UPCOMING ACTIVITIES

- INSTALLATION OF ELECTRICAL DUCT BANK AND VAULT
- PRECONSTRUCTION MEETINGS WITH CONCRETE, UNDERGROUND PLUMBING & ELECTRICAL, STRUCTURAL STEEL, ELEVATOR, AND WATERPROOFING
- PAVING OF MORRILL AVE
- EXCAVATION CONTINUES
- MEETING FOR BID PACKAGE III
- INSTALLATION OF RETENTION SYSTEM WILL CONTINUE

FOR A LIVE FEED OF THE PROJECT, VISIT:

[HTTP://SPEARS.OKSTATE.EDU/BUILDING/LIVE/](http://spears.okstate.edu/building/live/)

[HTTP://SPEARS.OKSTATE.EDU/BUILDING/LIVE2/](http://spears.okstate.edu/building/live2/)



**DETERMAN SCHEIRMAN, INC.**  
**CONSULTING ENGINEERS**



**L R F P**

Oklahoma State University,  
Long Range Facilities Planning,



TM