



# OSU SPEARS SCHOOL OF BUSINESS BUILDING

OKLAHOMA STATE UNIVERSITY



## JULY PROGRESS REPORT

7.31.2017



### MONTHLY OVERVIEW

- ◆ CONT. FRAMING AND ROCKING SOFFITS
- ◆ INSTALLATION OF TOILET PARTITIONS
- ◆ INSTALL GLASS AT BASEMENT BREAKOUT ROOMS
- ◆ CONT. GFRC INSTALLATION
- ◆ STARTED WALL VINYL ON 4TH FLOOR
- ◆ CONT. INSTALL OF SLOT WINDOWS
- ◆ POLISH TERRAZZO ON 4TH AND 3RD FLOOR
- ◆ CONT. EXTERIOR CONCRETE
- ◆ BEGAN INSTALLATION OF FRAMING FOR ELEVATED DECKS

## MONTHLY PROGRESS REPORT

**PROGRESS REPORT:** This July, the exterior of the project site continues to progress with sidewalks and paver bases being poured on the north and east sides. The plaza has continued to progress with the waterproofing being installed on the deck in two sections. We have received more of the GFRC to allow its installation to continue. Slot windows are nearing completion and we have been installing exterior doors for the plaza and west entrances. The interior of the project progresses with finishes continuing to be installed on the 2<sup>nd</sup>, 3<sup>rd</sup>, and 4<sup>th</sup> floors. Terrazzo has moved back up to the 4<sup>th</sup> floor to begin polishing and then polishing the 3<sup>rd</sup> floor immediately after.

AS CONSTRUCTION CONTINUES, MANHATTAN WILL ISSUE MONTHLY PROGRESS REPORTS THROUGHOUT THE CONSTRUCTION PROCESS. TYPICALLY, THESE REPORTS ARE GENERATED AND TRANSMITTED ON THE LAST DAY OF EACH MONTH. THESE REPORTS ARE MEANT TO SERVE AS A TOOL FOR OSU LONG RANGE FACILITIES PLANNING TO DOCUMENT PRODUCTION AND KEEP INTERESTED PARTIES UPDATED WITH PROGRESS WHOM WOULD NOT OTHERWISE BE INVOLVED ON A DAILY BASIS.

MANHATTAN IS PROUD TO PARTNER WITH OSU LONG RANGE FACILITIES PLANNING, SPEARS SCHOOL OF BUSINESS, AND ELLIOT AND ASSOCIATES ON THIS PROJECT.



## CEILING



**PICTURED ABOVE:**  
2<sup>ND</sup> FLOOR NORTH ELEVATOR GRID



**PICTURED LEFT:**  
4<sup>TH</sup> FLOOR CEILING TILE



**PICTURED BOTTOM LEFT:**  
3<sup>RD</sup> FLOOR OFFICE CEILING TILE



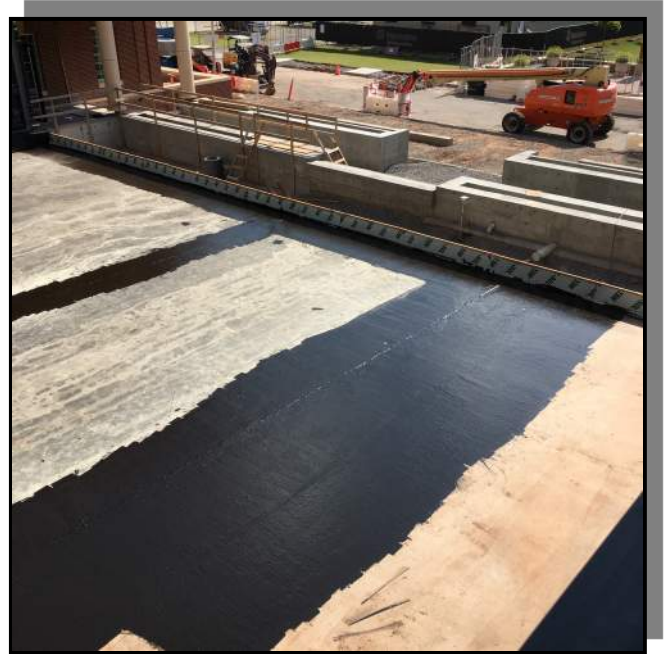
## EXTERIOR IMPROVEMENTS



**PICTURED ABOVE:**  
EXTERIOR LOGGIA DOORS

**PICTURED RIGHT:**  
PLAZA STAGE WATERPROOFING

**PICTURED BELOW:**  
NORTH AIR TOWERS





## EXTERIOR IMPROVEMENTS

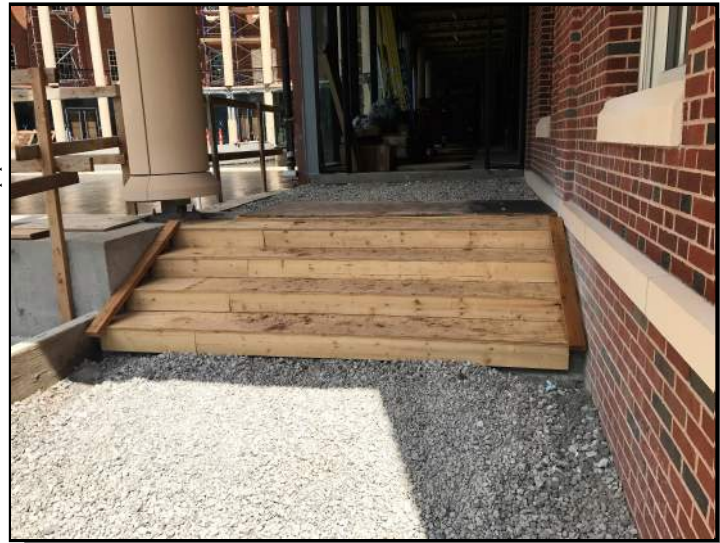


**PICTURED ABOVE:**

CONCRETE STEM WALL ON EAST SIDE

**PICTURED RIGHT:**

SOUTHWEST VESTIBULE STAIR PROTECTION



**PICTURED BELOW:**

NE SEAT WALL FOOTING





## INTERIOR FRAMING, AND FINISHES



**PICTURED ABOVE:**

1<sup>ST</sup> FLOOR LOGGIA FRAMING

**PICTURED LEFT:**

4<sup>TH</sup> FLOOR WALL VINYL



**PICTURED BELOW LEFT:**

1<sup>ST</sup> FLOOR COMPUTER LAB





## TERRAZZO



**PICTURED ABOVE:**  
4TH FLOOR TERRAZZO GRINDING

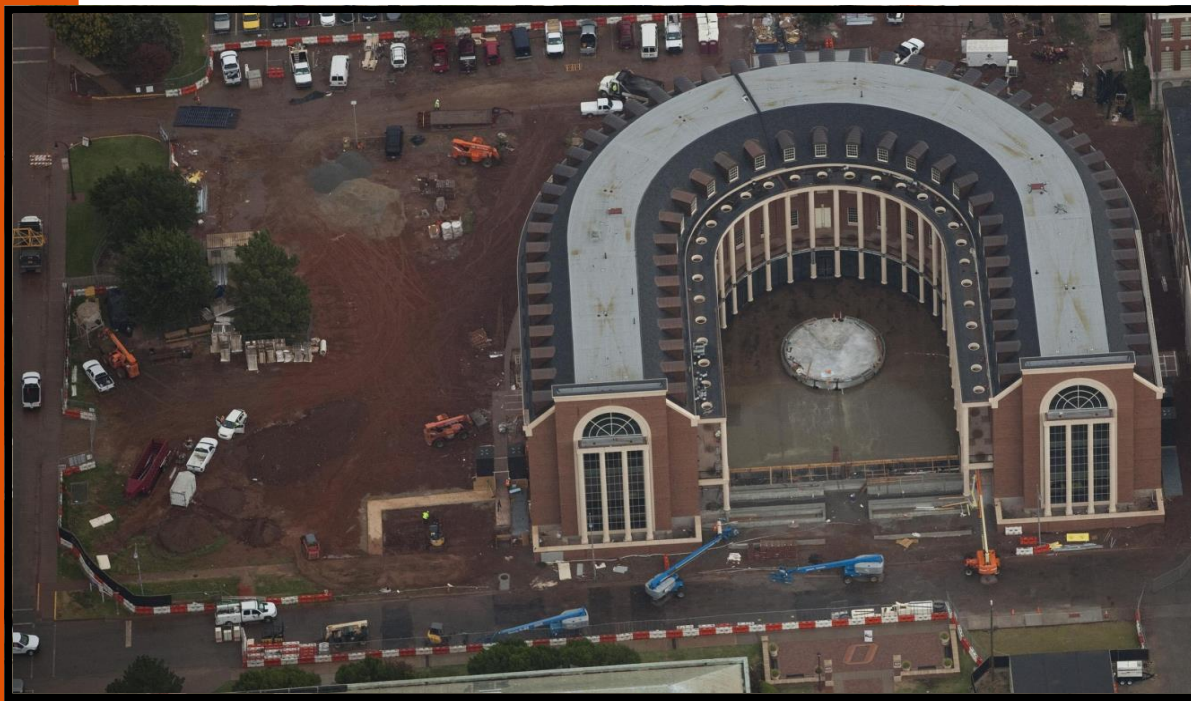
**PICTURED RIGHT:**  
4TH FLOOR FINAL POLISH

**PICTURED BELOW:**  
3RD FLOOR FINAL POLISH





# AERIAL PHOTOS



## JULY 2017



APRIL 2015



MAY 2015



JUNE 2015



JULY 2015



AUGUST 2015



SEPTEMBER 2015



OCTOBER 2015



NOVEMBER 2015



DECEMBER 2015



# AERIAL PHOTOS



JANUARY 2016



FEBRUARY 2016



MARCH 2016



APRIL 2016



MAY 2016



JUNE 2016



JULY 2016



AUGUST 2016



SEPTEMBER 2016



OCTOBER 2016



NOVEMBER 2016



DECEMBER 2016



JANUARY 2017



FEBRUARY 2017



MARCH 2017





# AERIAL PHOTOS



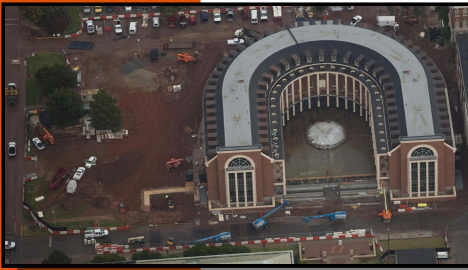
APRIL 2017



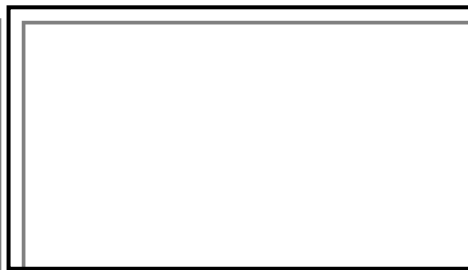
MAY 2017



JUNE 2017



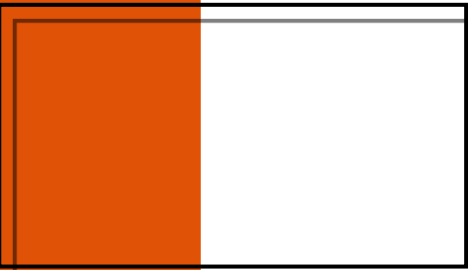
JULY 2017



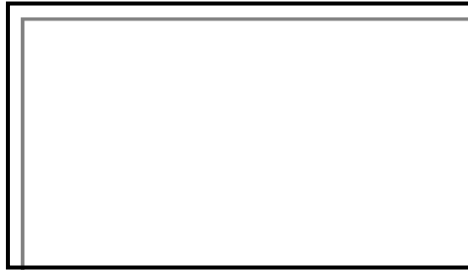
AUGUST 2017



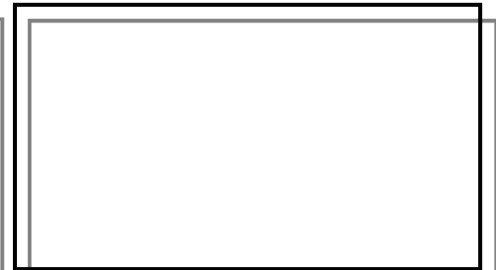
SEPTEMBER 2017



OCTOBER 2017



NOVEMBER 2017



DECEMBER 2017



JANUARY 2018



"The only thing better than recognizing a quality product is building one."

www.manhattanconstruction.com



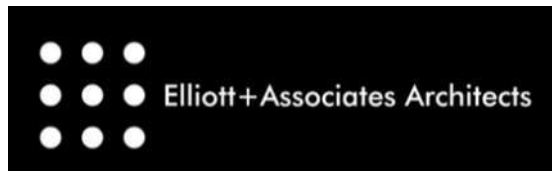
## UPCOMING ACTIVITIES FOR AUGUST

- ◆ CONT. FRAMING AND ROCKING WALLS AND SOFFITS ON FIRST FLOOR
- ◆ BEGIN WALL VINYL
- ◆ BEGIN PLAZA FOAM
- ◆ CONT. GFRC INSTALLATION
- ◆ START DROPPING CEILING TILES ON THE SECOND FLOOR
- ◆ CONT. POLISHING TERRAZZO ON BASEMENT
- ◆ CONT. EXTERIOR CONCRETE
- ◆ BEGIN INSTALLATION OF SIGNAGE PANELS

FOR A LIVE FEED OF THE PROJECT, VISIT:

[HTTP://SPEARS.OKSTATE.EDU/BUILDING/LIVE/](http://spears.okstate.edu/building/live/)

[HTTP://SPEARS.OKSTATE.EDU/BUILDING/](http://spears.okstate.edu/building/)



**DETERMAN SCHEIRMAN, INC.**  
CONSULTING ENGINEERS



**L R F P**

Oklahoma State University,  
Long Range Facilities Planning,



TM



## MANHATTAN PROJECT TEAM



**PROJECT DIRECTOR**  
CRAIG ABBOTT



**PROJECT MANAGER**  
CHAD KENDRICK



**SR. SUPERINTENDENT**  
JUSTIN FEGEL



**SUPERINTENDENT**  
PAUL MCGUIRE



**ASSISTANT PROJECT  
MANAGER**  
ZAC MCGRATH



**ESTIMATOR**  
PHIL BRANDT



**SAFETY MANAGER**  
JUSTIN TALBERT



**PROJECT ENGINEER**  
MICHAEL LAKE



**PROJECT ENGINEER**  
DOMINIQUE HARRIS



**LABOR FOREMAN**  
JULIO MORALES



**FIELD OFFICE  
MANAGER**  
SHARON MUSE



**INTERN**  
DONALD BLAIR



**INTERN**  
CONNOR FINKHOUSE