



OSU SPEARS SCHOOL OF BUSINESS BUILDING

OKLAHOMA STATE UNIVERSITY



JULY PROGRESS REPORT

7.31.2016



MONTHLY OVERVIEW

- ◆ CONT. EXTERIOR WALL FRAMING
- ◆ CONT. BASEMENT DUCTWORK/PLUMBING
- ◆ CONT. SHEATHING AND WEATHER BARRIER
- ◆ CONT. INSTALLING BRICK MASONRY
- ◆ SET THE FIRST DORMERS
- ◆ CONT. ROOF FRAMING, DECKING AND DETAIL
- ◆ TAPPED 24 INCH CHILLED WATER LINES
- ◆ STARTED INTERIOR WALL LAYOUT IN THE BASEMENT
- ◆ PLAZA AND 1ST FLOOR LOGGIA SOMD WERE POURED

MONTHLY PROGRESS REPORT

PROGRESS REPORT: THIS JULY, THE PLAZA AND 1ST FLOOR LOGGIA SOMD WERE POURED ALONG WITH SOME EQUIPMENT PADS LOCATED ON THE NORTH AND SOUTH ENDS ON THE 1ST, 2ND, 3RD, AND 4TH FLOORS. EXTERIOR WALL FRAMING CONTINUES ON THE INTERIOR RADIUS OF THE BUILDING. SHEATHING AND WEATHER BARRIER ARE NEARING COMPLETION ON THE EXTERIOR RADIUS AND HAVE BEGUN ON THE INTERIOR RADIUS. INTERIOR WALL LAYOUT HAS BEGUN AND BRICK MASONRY IS MAKING GROUND AROUND THE BUILDING, TOUCHING THE SECOND FLOOR ON THE SOUTH SIDE AND BROUGHT UP TO SCAFFOLD HEIGHT ON THE NORTH AND EAST SIDES. ROOF FRAMING, DECKING AND DETAIL IS BEING INSTALLED AND THE FIRST DORMER HAS BEEN SET IN PLACE. MEP BASEMENT ROUGH-IN IS UNDERWAY AND STEEL ERECTION IS NARROWING DOWN TO ITS FINAL DAYS.

AS CONSTRUCTION CONTINUES, MANHATTAN WILL ISSUE MONTHLY PROGRESS REPORTS THROUGHOUT THE CONSTRUCTION PROCESS. TYPICALLY, THESE REPORTS ARE GENERATED AND TRANSMITTED ON THE LAST DAY OF EACH MONTH. THESE REPORTS ARE MEANT TO SERVE AS A TOOL FOR OSU LONG RANGE FACILITIES PLANNING TO DOCUMENT PRODUCTION AND KEEP INTERESTED PARTIES UPDATED WITH PROGRESS WHOM WOULD NOT OTHERWISE BE INVOLVED ON A DAILY BASIS.

MANHATTAN IS PROUD TO PARTNER WITH OSU LONG RANGE FACILITIES PLANNING, SPEARS SCHOOL OF BUSINESS, AND ELLIOT AND ASSOCIATES ON THIS PROJECT.

ISSUE NO.16



1ST DORMER FLY, ROOF FRAMING & DECKING



PICTURED ABOVE:

PLACEMENT OF THE FIRST
DORMER

PICTURED LEFT & BELOW:

ROOF FRAMING, DECKING
AND DETAIL





FRAMING, SHEATHING, & WEATHER BARRIER



PICTURED ABOVE & RIGHT:
WEATHER BARRIER,
SHEATHING, AND FRAMING
ALONG THE NORTH AND
EAST EXTERIOR WALLS

PICTURED BELOW:
SHEATHING AND FRAMING
ON THE SOUTH SIDE
INTERIOR RADIUS





BRICK MASONRY



PICTURED ABOVE:
EAST BRICK MASONRY

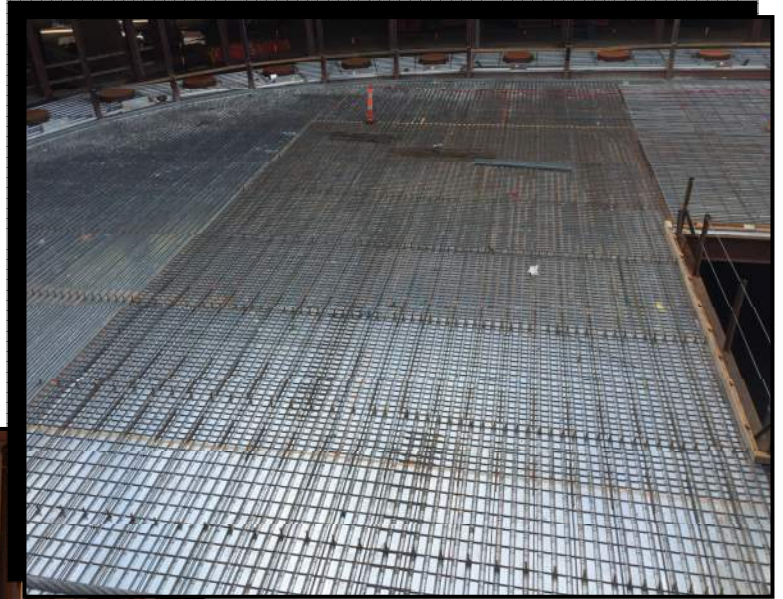
PICTURED RIGHT:
SOUTH BRICK MASONRY

PICTURED BELOW:
NORTH BRICK MASONRY





SOMD CONCRETE POURS

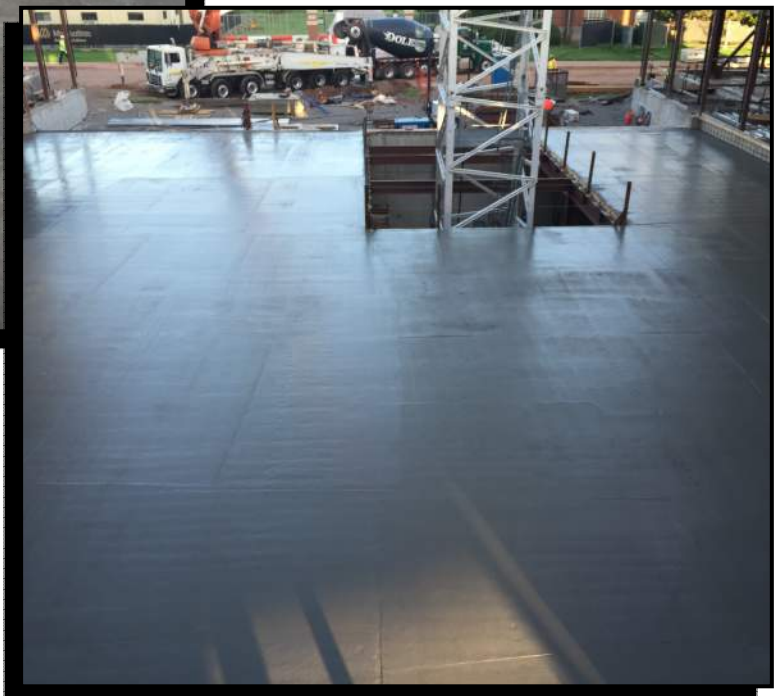


PICTURED ABOVE:

PLAZA DECKING WITH REBAR

PICTURED LEFT & BELOW:

FINISHED POURS FOR THE
1ST FLOOR LOGGIA AND
PLAZA

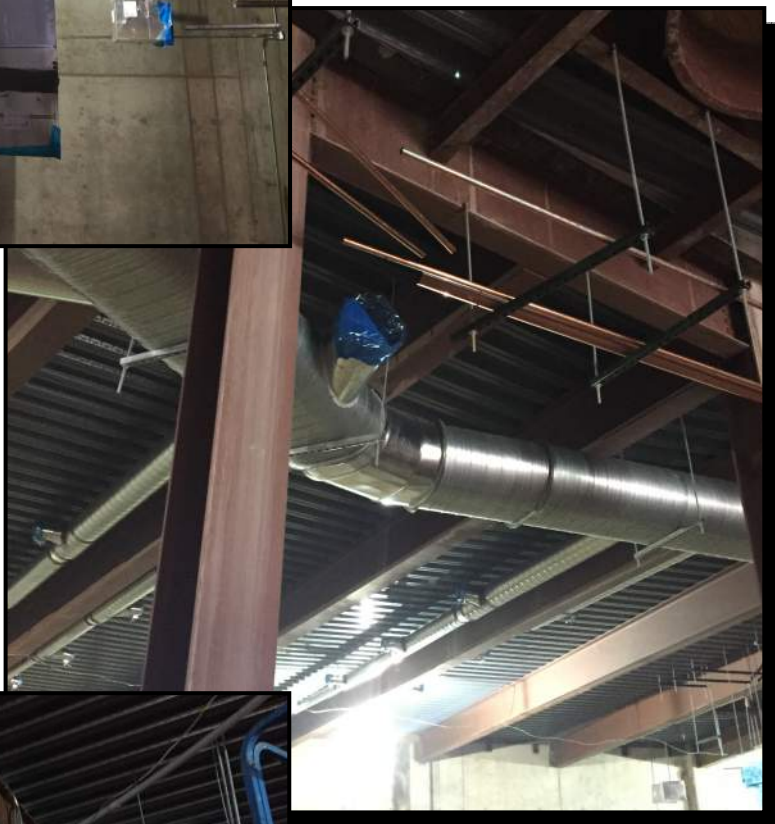




BASEMENT DUCTWORK



PICTURED:
DUCTWORK
INSTALLATION IN THE
BASEMENT





AERIAL PHOTO



JULY 2016



APRIL 2015



MAY 2015



JUNE 2015



JULY 2015



AUGUST 2015



SEPTEMBER 2015



OCTOBER 2015



NOVEMBER 2015



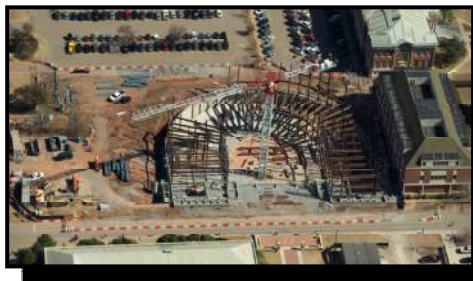
DECEMBER 2015



AERIAL PHOTO



JANUARY 2016



FEBRUARY 2016



MARCH 2016



APRIL 2016



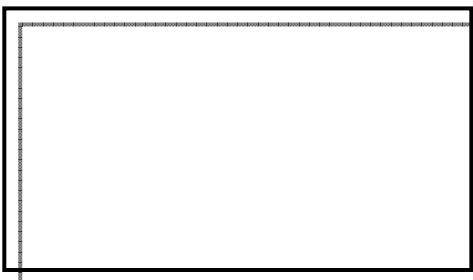
MAY 2016



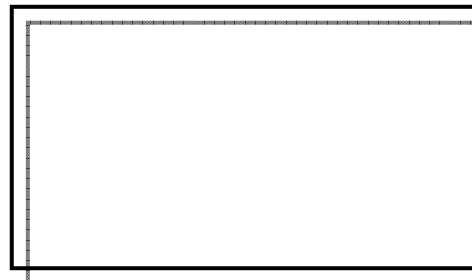
JUNE 2016



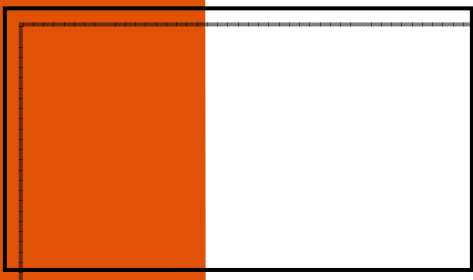
JULY 2016



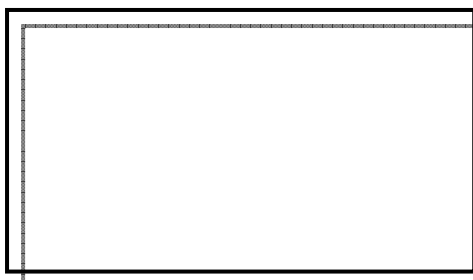
AUGUST 2016



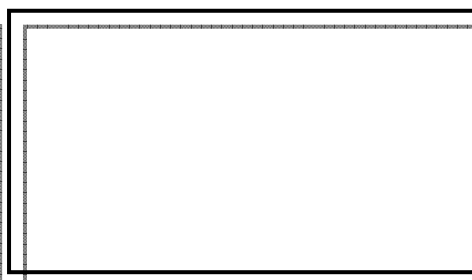
SEPTEMBER 2016



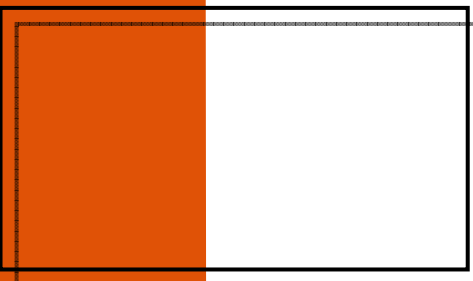
OCTOBER 2016



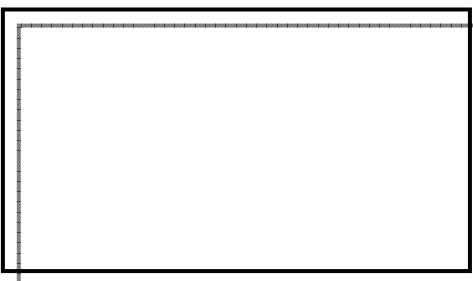
NOVEMBER 2016



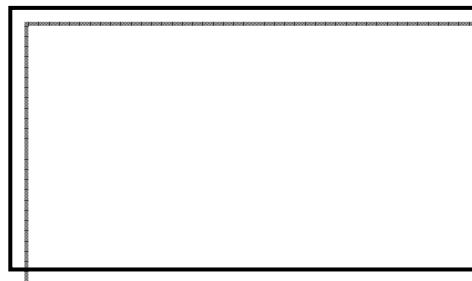
DECEMBER 2016



JANUARY 2017



FEBRUARY 2017



MARCH 2017



"The only thing better than recognizing a quality product is building one."

www.manhattanconstruction.com



UPCOMING ACTIVITIES FOR JULY

- CONT. BASEMENT DUCTWORK AND RISERS
- CONT. EXTERIOR WALL FRAMING
- CONT. EXTERIOR WALL SHEATHING ON INTERIOR AND EXTERIOR RADIUS
- CONT. WEATHER BARRIER ON EXTERIOR WALLS ON INTERIOR AND EXTERIOR RADIUS
- CONT. BRICK MASONRY
- CONT. ROOF FRAMING, DECKING AND DETAIL
- CONT. SETTING DORMERS
- CONT. LAYING OUT BASEMENT, 2ND, 3RD, AND 4TH FLOOR WALLS

FOR A LIVE FEED OF THE PROJECT, VISIT:

[HTTP://SPEARS.OKSTATE.EDU/BUILDING/LIVE/](http://spears.okstate.edu/building/live/)

[HTTP://SPEARS.OKSTATE.EDU/BUILDING/](http://spears.okstate.edu/building/)



DETERMAN SCHEIRMAN, INC.
CONSULTING ENGINEERS



L R F P
Oklahoma State University,
Long Range Facilities Planning,



TM