



# OSU SPEARS SCHOOL OF BUSINESS BUILDING

OKLAHOMA STATE UNIVERSITY



## JULY PROGRESS REPORT

7.31.2015



### MONTHLY OVERVIEW

- PROGRESS CONTINUES ON THE MORRILL STREET UTILITIES
- INSTALLED ALL ELECTRICAL VAULTS
- CONTINUED EXCAVATION FOR RETENTION SYSTEM & BUILDING
- CONTINUED INSTALLATION OF RETENTION SYSTEM
- FINISHED PRECONSTRUCTION MEETINGS FOR BID PACKAGE 2

## MONTHLY PROGRESS REPORT

AS CONSTRUCTION CONTINUES, MANHATTAN WILL ISSUE MONTHLY PROGRESS REPORTS THROUGHOUT THE CONSTRUCTION PROCESS. TYPICALLY, THESE REPORTS ARE GENERATED AND TRANSMITTED ON THE LAST DAY OF EACH MONTH. THESE REPORTS ARE MEANT TO SERVE AS A TOOL FOR OSU LONG RANGE FACILITIES PLANNING TO DOCUMENT PRODUCTION AND KEEP INTERESTED PARTIES UPDATED WITH PROGRESS WHOM WOULD NOT OTHERWISE BE INVOLVED ON A DAILY BASIS.

**PROGRESS REPORT:** WITH THE RETENTION SYSTEM NEARING COMPLETION, OTHER TRADES WILL BE ABLE TO START WORK AT THE BASEMENT LEVEL. WE ARE NEARING COMPLETION OF MORRILL AVE. THIS MONTH, WITH ALL OF THE ADDITIONAL EXCAVATION AND INSTALLATION OF THE RETENTION SYSTEM, YOU CAN UNARGUABLY SEE THE NEW BUILDING'S FOOTPRINT TAKING SHAPE.

MANHATTAN IS PROUD TO PARTNER WITH OSU LONG RANGE FACILITIES PLANNING, SPEARS SCHOOL OF BUSINESS, AND ELLIOT AND ASSOCIATES ON THIS PROJECT.

ISSUE NO.04



# RETENTION SYSTEM



**PICTURED:** EXCAVATION FOR THE RETENTION SYSTEM AND RETENTION SYSTEM INSTALLATION





# RETENTION SYSTEM CONT.



PICTURED: SHOTCRETE  
RETENTION SYSTEM IN-  
STALLATION

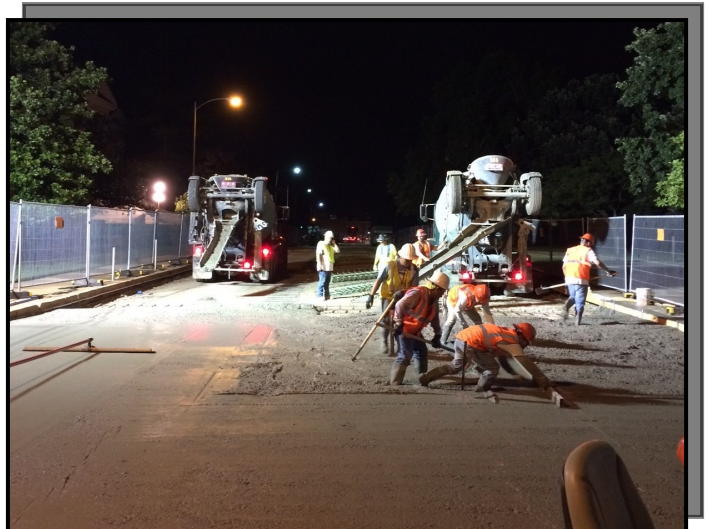




# MORRILL STREET

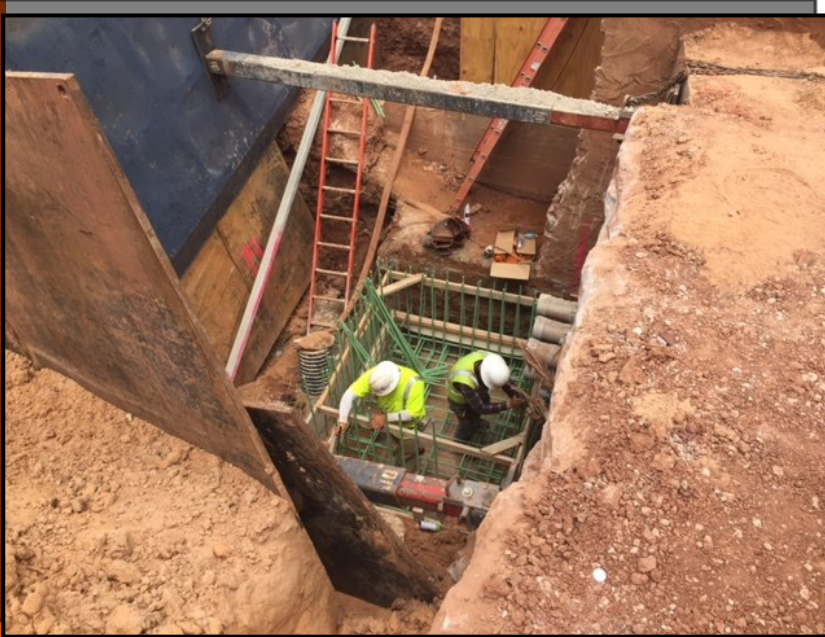


PICTURED: PREPPING AND POURING MORRILL STREET





# VAULT INSTALLATION



**PICTURED ABOVE:** TYING REBAR FOR BASE OF VAULT

**PICTURED RIGHT:** LATE NIGHT FORMING OF WALLS



**PICTURED LEFT:** POURING VAULT LID



## SAFETY MEETING/TRAINING



PICTURED LEFT:  
WEEKLY SAFETY  
MEETING WITH SUBS



PICTURED RIGHT:  
MCC EMPLOYEES  
ATTEND CONFINED  
SPACE TRAINING



# MONTHLY PROGRESS





# AERIAL PHOTO



## JULY 2015



APRIL 2015



MAY 2015



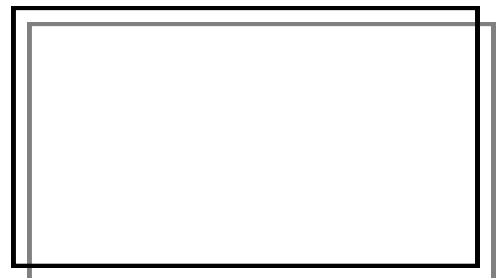
JUNE 2015



JULY 2015



AUGUST 2015



SEPTEMBER 2015





"The only thing better than recognizing a quality product is building one."

www.manhattanconstruction.com



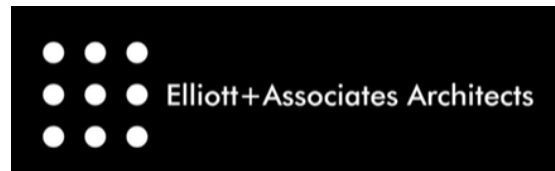
## UPCOMING ACTIVITIES

- COMPLETION OF MORRILL AVE
- CONTINUE EXCAVATION
- MEETING FOR BID PACKAGE III
- CONTINUE INSTALLATION OF RETENTION SYSTEM
- START DRILLING & POURING PIERS
- SET SUMP PIT BASINS
- START POURING FOOTINGS & FOUNDATION WALLS

FOR A LIVE FEED OF THE PROJECT, VISIT:

[HTTP://SPEARS.OKSTATE.EDU/BUILDING/LIVE/](http://spears.okstate.edu/building/live/)

[HTTP://SPEARS.OKSTATE.EDU/BUILDING/LIVE2/](http://spears.okstate.edu/building/live2/)



**DETERMAN SCHEIRMAN, INC.**  
CONSULTING ENGINEERS



**L R F P**

Oklahoma State University,  
Long Range Facilities Planning,



TM