



OSU SPEARS SCHOOL OF BUSINESS BUILDING

OKLAHOMA STATE UNIVERSITY



JANUARY PROGRESS REPORT

1.31.2017



MONTHLY OVERVIEW

- ◆ CONT. INSULATING AND ROCKING WALLS
- ◆ CONT. MEPPF INSTALL
- ◆ CONT. CURTAINWALL INSTALL
- ◆ DISMANTLED CRANE
- ◆ CONT. GFRC INSTALLATION
- ◆ CONT. INSTALL OF NORTH ELEVATOR
- ◆ BEGAN PRIMING WALLS ON 4TH FLOOR
- ◆ FINISHED LAYING ROOF SHINGLES
- ◆ BEGAN INSTALL OF CRESCENT WINDOW

MONTHLY PROGRESS REPORT

PROGRESS REPORT: THIS JANUARY, THE EXTERIOR PORTION OF THE BUILDING HIT MANY MILE STONES. ALL DORMERS ARE SET AND SHINGLES LAID. CURTAINWALL AND CRESCENT WINDOWS ARE NEARING COMPLETION. GFRC INSTALLATION CONTINUES IN THE LOGGIA WITH THE COLUMNS, AND END CAPS. MEPPF ROUGH-IN CONTINUES TO PROGRESS AS IT IS DWINDLING DOWN TO ITS FINAL FLOORS. FRAMING CONTINUES ON THE LOWER FLOORS ALONG WITH THE 4TH FLOOR ALREADY BEING ROCKED, MUDDED AND RECEIVING A BASE COAT OF PAINT. THE NORTH ELEVATOR IS MAKING SIGNIFICANT PROGRESS WITH A STARTUP DATE FOR TEMPORARY USE NEARING. WITH THE CRANE DISMANTLED, THE LOGGIA DECK WAS INSTALLED AND Poured ALLOWING FOR THE BASEMENT TO BE DRIED IN. JANUARY CAME WITH THE LARGEST SKYLINE CHANGE IN STILLWATER WITH THE CRANE REMOVAL.

AS CONSTRUCTION CONTINUES, MANHATTAN WILL ISSUE MONTHLY PROGRESS REPORTS THROUGHOUT THE CONSTRUCTION PROCESS. TYPICALLY, THESE REPORTS ARE GENERATED AND TRANSMITTED ON THE LAST DAY OF EACH MONTH. THESE REPORTS ARE MEANT TO SERVE AS A TOOL FOR OSU LONG RANGE FACILITIES PLANNING TO DOCUMENT PRODUCTION AND KEEP INTERESTED PARTIES UPDATED WITH PROGRESS WHOM WOULD NOT OTHERWISE BE INVOLVED ON A DAILY BASIS.



CRANE REMOVAL & LOGGIA PAD



PICTURED ABOVE:
LOGGIA PAD STEEL INSTALL

PICTURED LEFT:
TOWER CRANE REMOVAL

PICTURED BELOW:
LOGGIA PAD CONCRETE CURE



GFRC INSTALLATION



PICTURED ABOVE:
NORTH EXTERIOR END CAP GFRC

PICTURED RIGHT:
GFRC COLUMN INSTALL

PICTURED BELOW:
EAST CURTAINWALL GFRC INSTALL





MEPF & ELEVATOR INSTALL



PICTURED ABOVE:

SPRINKLER VALVE BOXES

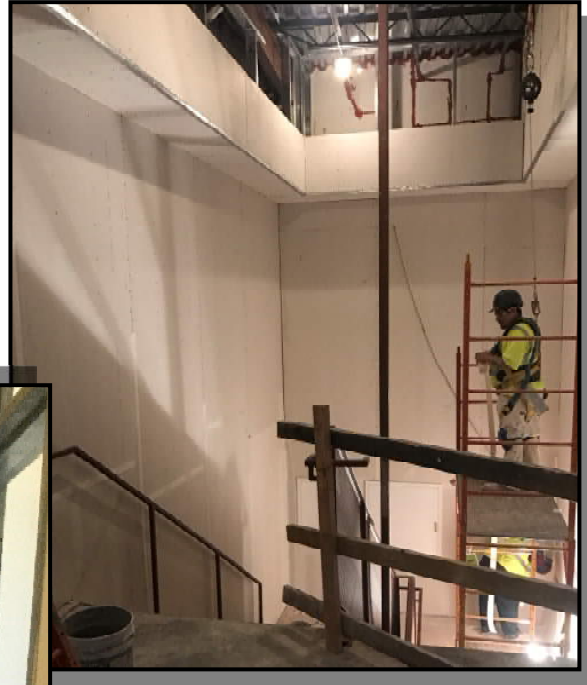
PICTURED RIGHT & BELOW:

NORTH ELEVATOR INSTALL





INTERIOR FRAMING, ROCK, & BASE COAT



PICTURED ABOVE:

SOUTH STAIRWELL MUD WORK

PICTURED LEFT:

3RD FLOOR WALL PREP BEFORE
PRIMING WALLS

PICTURED BELOW:

4TH FLOOR PAINTING DOOR-
FRAMES





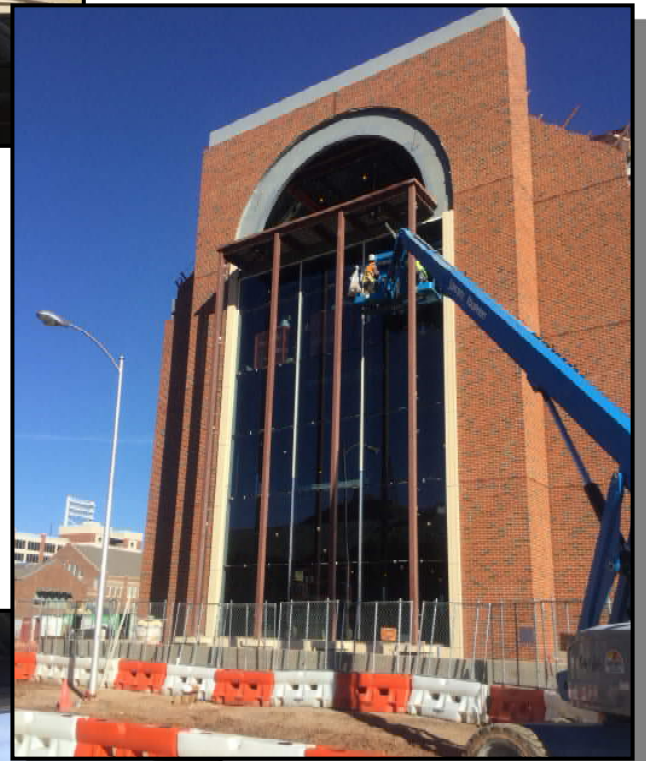
CURTAINWALL



PICTURED ABOVE:
CRESCENT/ROSE NORTH WINDOW
INSTALL

PICTURED RIGHT:
NORTH END CAP CURTAINWALL
INSTALLATION

PICTURED BELOW:
3RD FLR. EAST CURTAINWALL FRAME





AERIAL PHOTOS



JANUARY 2017



APRIL 2015



MAY 2015



JUNE 2015



JULY 2015



AUGUST 2015



SEPTEMBER 2015



OCTOBER 2015



NOVEMBER 2015



DECEMBER 2015



AERIAL PHOTOS



JANUARY 2016



FEBRUARY 2016



MARCH 2016



APRIL 2016



MAY 2016



JUNE 2016



JULY 2016



AUGUST 2016



SEPTEMBER 2016



OCTOBER 2016



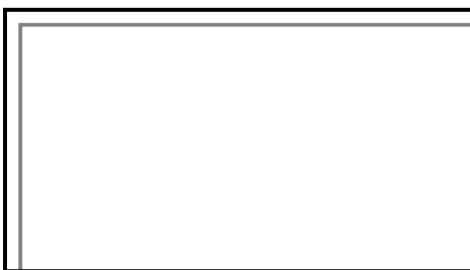
NOVEMBER 2016



DECEMBER 2016



JANUARY 2017



FEBRUARY 2017



MARCH 2017



"The only thing better than recognizing a quality product is building one."

www.manhattanconstruction.com



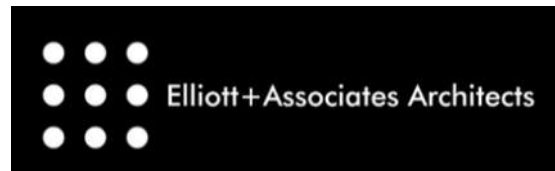
UPCOMING ACTIVITIES FOR FEBRUARY

- CONT. MEPF INSTALL
- TURN ON PERMANENT POWER
- CONT. GFRC INSTALLATION
- CONT. INSULATING AND ROCKING WALLS
- INSTALL SOUTH ELEVATOR
- CONT. CURTAINWALL INSTALLATION
- CONT. LAYING CEILING GRID
- LOGGIA PAD INSTALL FINISH
- CONT. PRIME AND 1ST COAT PAINTING OF WALLS

FOR A LIVE FEED OF THE PROJECT, VISIT:

[HTTP://SPEARS.OKSTATE.EDU/BUILDING/LIVE/](http://spears.okstate.edu/building/live/)

[HTTP://SPEARS.OKSTATE.EDU/BUILDING/](http://spears.okstate.edu/building/)



DETERMAN SCHEIRMAN, INC.
CONSULTING ENGINEERS



L R F P

Oklahoma State University,
Long Range Facilities Planning,



TM