



# OSU SPEARS SCHOOL OF BUSINESS BUILDING

OKLAHOMA STATE UNIVERSITY



Manhattan

## JANUARY PROGRESS REPORT

1.31.2016



### MONTHLY OVERVIEW

- Poured North Half of 81'-6" Slab on Grade
- Poured South Half 81'-3" Depressed Slab on Grade
- Con. Waterproofing Bsmt Walls
- Continued Backfill along Hester
- Completed Underground Plumbing and Drainage Piping
- Started Forming Grade Beams along Hester

## MONTHLY PROGRESS REPORT

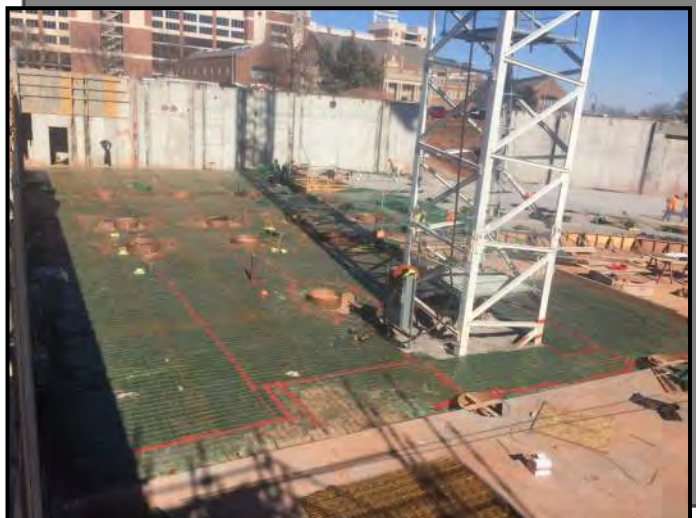
AS CONSTRUCTION CONTINUES, MANHATTAN WILL ISSUE MONTHLY PROGRESS REPORTS THROUGHOUT THE CONSTRUCTION PROCESS. TYPICALLY, THESE REPORTS ARE GENERATED AND TRANSMITTED ON THE LAST DAY OF EACH MONTH. THESE REPORTS ARE MEANT TO SERVE AS A TOOL FOR OSU LONG RANGE FACILITIES PLANNING TO DOCUMENT PRODUCTION AND KEEP INTERESTED PARTIES UPDATED WITH PROGRESS WHOM WOULD NOT OTHERWISE BE INVOLVED ON A DAILY BASIS.

**PROGRESS REPORT:** DURING THE MONTH OF JANUARY WE CONTINUED WATERPROOFING AND BACKFILLING OPERATIONS ALONG THE WEST BASEMENT WALLS. THIS HAS ALLOWED US TO START FORMING GRADE BEAMS AT THE SOUTH WEST END OF THE BUILDING THAT OUR STEEL COLUMNS WILL SET ON. MCINTOSH MECHANICAL HAS FINISHED THE UNDER SLAB PLUMBING AND DRAINAGE SYSTEM, ALLOWING US TO POUR THE NORTH HALF 81'-6" SOG AND SOUTH HALF 81'-3" DEPRESSED SOG. WE ALSO INSTALLED THE 60" FRP DUCTWORK FOR THE NORTH AIR TOWER AND THE 60" FRP CAP FOR THE FUTURE SOUTH TOWER.

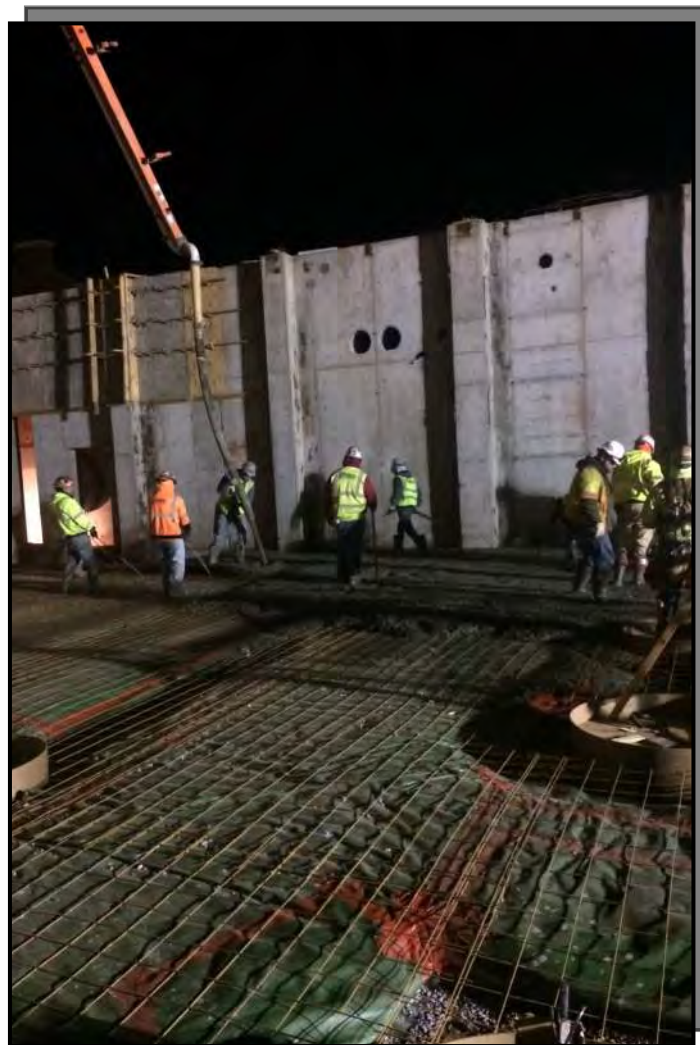
MANHATTAN IS PROUD TO PARTNER WITH OSU LONG RANGE FACILITIES PLANNING, SPEARS SCHOOL OF BUSINESS, AND ELLIOT AND ASSOCIATES ON THIS PROJECT. ISSUE NO.10



## NORTH 81'-6" SLAB ON GRADE



PICTURED: LITHKO FORMING & POURING 81'-6" SOG.

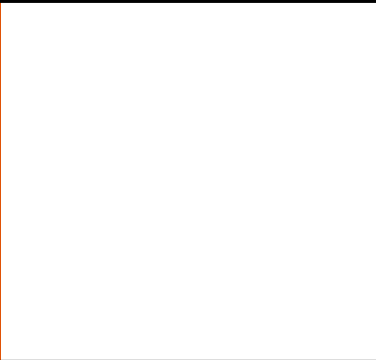




## BACKFILL & WATERPROOFING



PICTURED LEFT & BELOW:  
INSTALLING  
WATERPROOFING



PICTURED LEFT:  
USING A ROCK  
SLINGER ALONG  
HESTER TO BACKFILL



## UNDERGROUND UTILITIES

**PICTURED LEFT & BELOW:  
UNDERGROUND  
DRAINAGE SYSTEM ON  
EXTERIOR OF BUILDING IS  
INSTALLED**



**PICTURED BELOW:  
FRP DUCT FOR NORTH  
AIR TOWER BEING  
INSTALLED.**





# GRADE BEAM



**PICTURED LEFT & BELOW:  
INSTALLATION OF GRADE  
BEAM REBAR ALONG  
HESTER.**

**PICTURED BELOW:  
GRADE BEAM FORMS  
BEING INSTALLED**

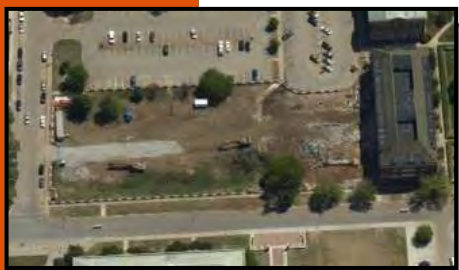




# AERIAL PHOTO



## JANUARY 2016



APRIL 2015



MAY 2015



JUNE 2015



JULY 2015



AUGUST 2015



SEPTEMBER 2015



OCTOBER 2015



NOVEMBER 2015



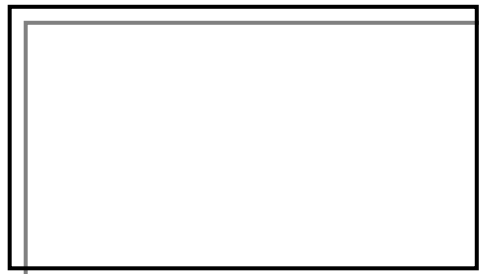
DECEMBER 2015



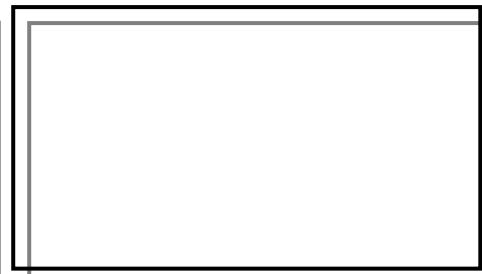
# AERIAL PHOTO



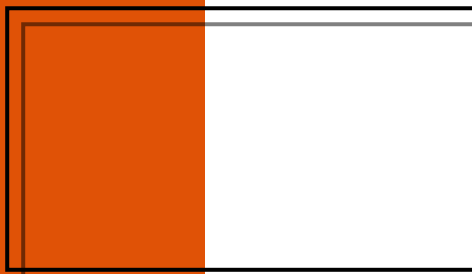
JANUARY 2016



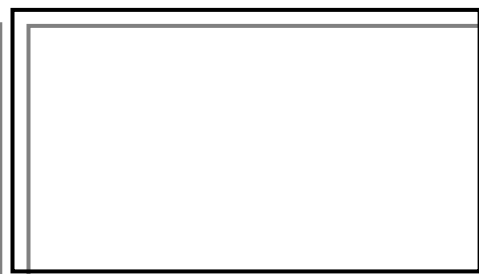
FEBRUARY 2016



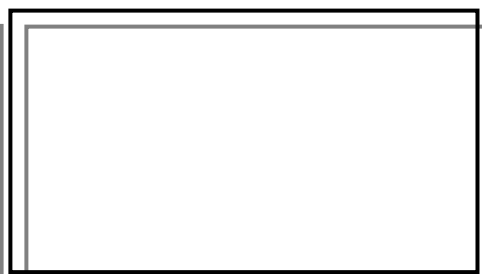
MARCH 2016



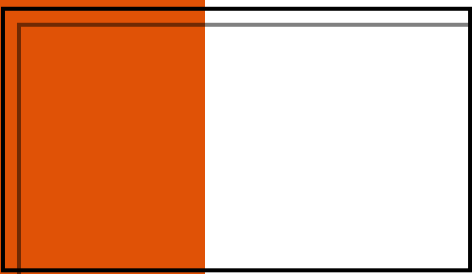
APRIL 2016



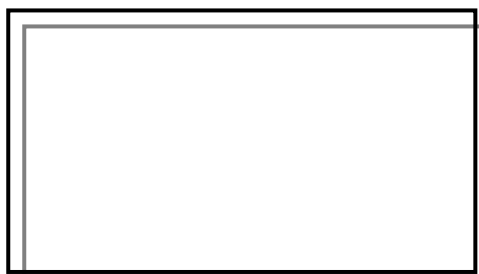
MAY 2016



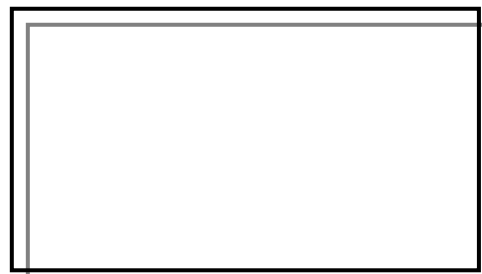
JUNE 2016



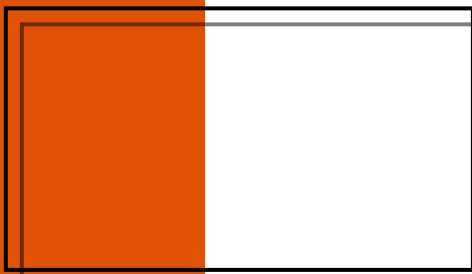
JULY 2016



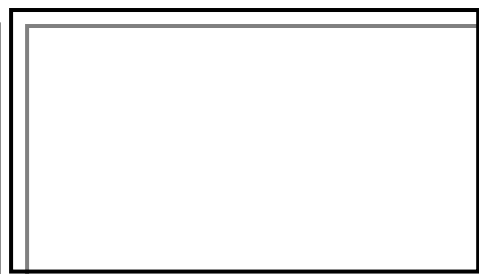
AUGUST 2016



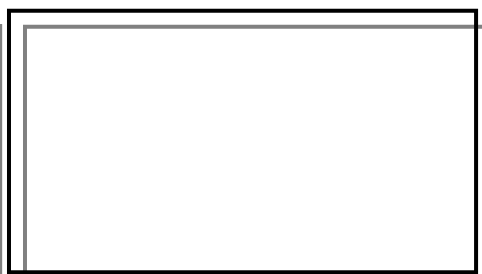
SEPTEMBER 2016



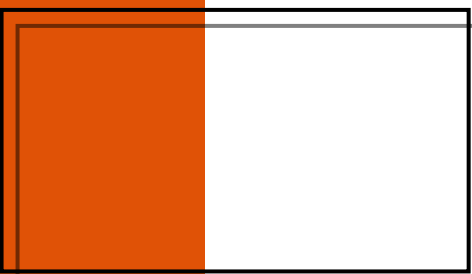
OCTOBER 2016



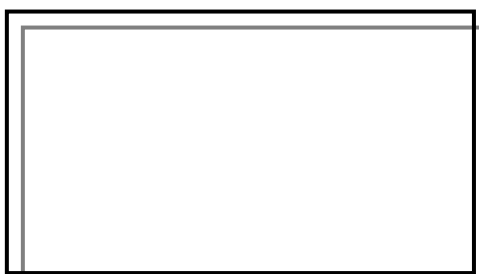
NOVEMBER 2016



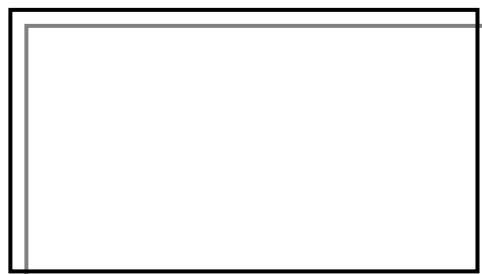
DECEMBER 2016



JANUARY 2017



FEBRUARY 2017



MARCH 2017



"The only thing better than recognizing a quality product is building one."

www.manhattanconstruction.com



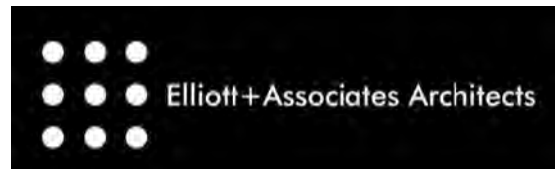
## UPCOMING ACTIVITIES FOR FEBRUARY

- FINISH BACKFILL OPERATIONS ALONG HESTER
- POUR FINAL SECTION OF BASEMENT WALL WHERE RAMP WAS LOCATED
- POUR GRADE BEAMS AT NORTHWEST CRESCENT
- CONTINUE WATERPROOFING
- FINISH SLAB ON GRADE IN BASEMENT
- START ERECTING STRUCTURAL STEEL

FOR A LIVE FEED OF THE PROJECT, VISIT:

[HTTP://SPEARS.OKSTATE.EDU/BUILDING/LIVE/](http://spears.okstate.edu/building/live/)

[HTTP://SPEARS.OKSTATE.EDU/BUILDING/](http://spears.okstate.edu/building/)



**DETERMAN SCHEIRMAN, INC.**  
CONSULTING ENGINEERS



**L R F P**  
Oklahoma State University,  
Long Range Facilities Planning,



TM