



# OSU SPEARS SCHOOL OF BUSINESS BUILDING

OKLAHOMA STATE UNIVERSITY



## FEBRUARY PROGRESS REPORT

2.28.2017



### MONTHLY OVERVIEW

- ◆ CONT. INSULATING AND ROCKING WALLS
- ◆ CONT. MEFP INSTALL
- ◆ CONT. CURTAINWALL INSTALL
- ◆ CONT. GFRC INSTALLATION
- ◆ CONT. INSTALL OF SOUTH ELEVATOR
- ◆ CONT. PRIMING WALLS ON 3RD FLOOR
- ◆ CONT. INSTALL OF CRESCENT WINDOW
- ◆ CONT. INSTALL OF CEILING GRID ON 4TH FLOOR
- ◆ BID PACKAGE V BID OUT

## MONTHLY PROGRESS REPORT

**PROGRESS REPORT:** THIS FEBRUARY, THE EXTERIOR PORTION OF THE BUILDING HIT MANY MILE STONES. BID PACKAGE V FOR ALL THE HARDSCAPE AND LANDSCAPING BID OUT, CURTAINWALL AND CRESCENT WINDOWS ARE NEARING COMPLETION. GFRC INSTALLATION CONTINUES IN THE LOGGIA WITH THE COLUMNS, AND END CAPS, AS WELL AS THE EAST BAY WINDOW. MEFP ROUGH-IN CONTINUES TO PROGRESS AS IT IS DWINDLING DOWN TO ITS FINAL FLOORS. FRAMING CONTINUES ON THE LOWER FLOORS ALONG WITH THE 2ND, 3RD, & 4TH FLOOR ALREADY BEING MUDDED AND RECEIVING A BASE COAT OF PAINT. THE NORTH ELEVATOR IS OPERATIONAL FOR CONSTRUCTION USE. AS FEBRUARY COMES TO A CLOSE THE BUILDING CONTINUES TO SHOW ITS PROGRESS BOTH INTERNALLY AND EXTERNALLY.

AS CONSTRUCTION CONTINUES, MANHATTAN WILL ISSUE MONTHLY PROGRESS REPORTS THROUGHOUT THE CONSTRUCTION PROCESS. TYPICALLY, THESE REPORTS ARE GENERATED AND TRANSMITTED ON THE LAST DAY OF EACH MONTH. THESE REPORTS ARE MEANT TO SERVE AS A TOOL FOR OSU LONG RANGE FACILITIES PLANNING TO DOCUMENT PRODUCTION AND KEEP INTERESTED PARTIES UPDATED WITH PROGRESS WHOM WOULD NOT OTHERWISE BE INVOLVED ON A DAILY BASIS.

MANHATTAN IS PROUD TO PARTNER WITH OSU LONG RANGE FACILITIES PLANNING, SPEARS SCHOOL OF BUSINESS, AND ELLIOT AND ASSOCIATES ON THIS PROJECT.



## CEILING GRID AND HARD LID INSTALL



**PICTURED ABOVE:**

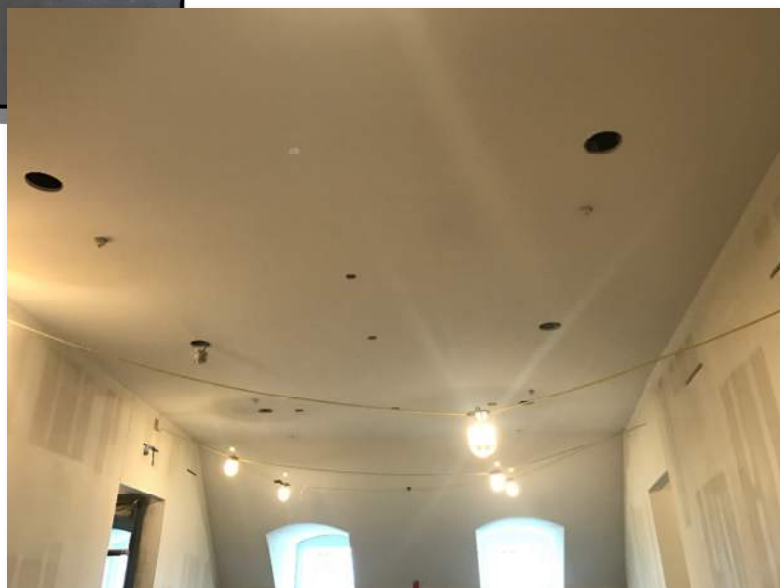
4TH FLOOR CEILING GRID INSTALL

**PICTURED LEFT:**

3RD FLOOR RESTROOM HARD LID  
CEILING

**PICTURED BELOW:**

4TH FLOOR LOBBY HARD LID  
CEILING





## GFRC INSTALLATION



**PICTURED ABOVE:**

NORTH EXTERIOR CHIMNEY GFRC

**PICTURED RIGHT:**

GFRC COLUMN INSTALL

**PICTURED BELOW:**

EAST CURTAINWALL GFRC INSTALL





## MEPF & ELEVATOR INSTALL



**PICTURED ABOVE:**

SPRINKLER PIPE INSTALL 1ST FLOOR

**PICTURED RIGHT:**

INSTALLATION OF SOUTH ELEVATOR

**PICTURED BELOW:**

NORTH ELEVATOR OPERATIONAL FOR CONSTRUCTION USE





## INTERIOR FRAMING, ROCK, & BASE COAT



**PICTURED ABOVE:**

**SOUTH STAIRWELL DRYWALL FINISHING**

**PICTURED LEFT:**

**BASEMENT CLASSROOM DRYWALL INSTALLATION**

**PICTURED BELOW:**

**1ST FLOOR DRYWALL INSTALL**





## CURTAINWALL



**PICTURED ABOVE:**

CRESCENT/ROSE NORTH WINDOW  
INSTALL

**PICTURED RIGHT:**

CRESCENT/ROSE SOUTH WINDOW  
INSTALLATION

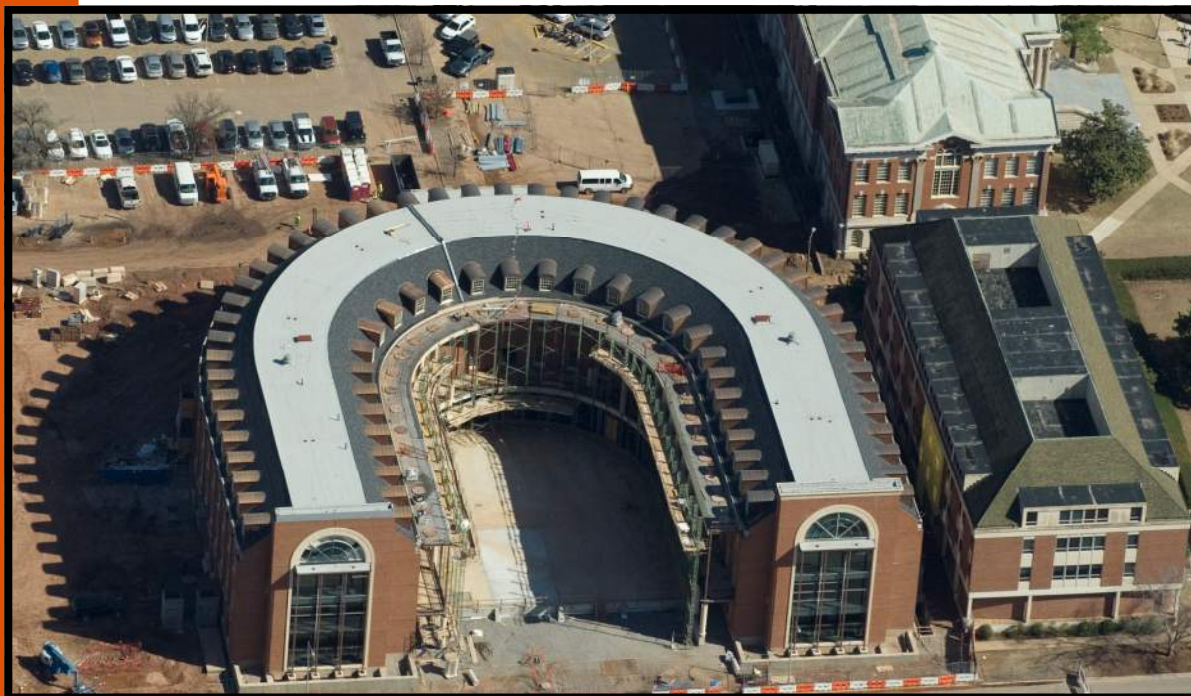
**PICTURED BELOW:**

2ND FLR. EAST CURTAINWALL FRAME





# AERIAL PHOTOS



## FEBRUARY 2017



APRIL 2015



MAY 2015



JUNE 2015



JULY 2015



AUGUST 2015



SEPTEMBER 2015



OCTOBER 2015



NOVEMBER 2015



DECEMBER 2015



# AERIAL PHOTOS



JANUARY 2016



FEBRUARY 2016



MARCH 2016



APRIL 2016



MAY 2016



JUNE 2016



JULY 2016



AUGUST 2016



SEPTEMBER 2016



OCTOBER 2016



NOVEMBER 2016



DECEMBER 2016



JANUARY 2017



FEBRUARY 2017



MARCH 2017





"The only thing better than recognizing a quality product is building one."

www.manhattanconstruction.com



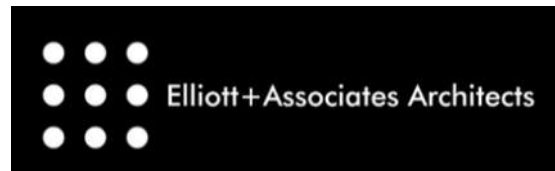
## UPCOMING ACTIVITIES FOR MARCH

- CONT. MEPF INSTALL
- TURN ON PERMANENT POWER
- CONT. GFRC INSTALLATION
- CONT. INSULATING AND ROCKING WALLS
- CONT. CURTAINWALL INSTALLATION
- CONT. LAYING CEILING GRID
- CONT. PRIME AND 1ST COAT PAINTING OF WALLS
- PREPARING FOR SITEWORK

FOR A LIVE FEED OF THE PROJECT, VISIT:

[HTTP://SPEARS.OKSTATE.EDU/BUILDING/LIVE/](http://spears.okstate.edu/building/live/)

[HTTP://SPEARS.OKSTATE.EDU/BUILDING/](http://spears.okstate.edu/building/)



**DETERMAN SCHEIRMAN, INC.**  
CONSULTING ENGINEERS



**L R F P**

Oklahoma State University,  
Long Range Facilities Planning,



TM