



OSU SPEARS SCHOOL OF BUSINESS BUILDING

OKLAHOMA STATE UNIVERSITY



Manhattan

FEBRUARY PROGRESS REPORT

2.29.2016



MONTHLY OVERVIEW

- POURED NORTH HALF OF DEPRESSED 81'-3" SLAB ON GRADE
- POURED FINAL WALL WHERE ACCESS RAMP WAS, CLOSING IN THE BSMT
- CON. WATERPROOFING BSMT WALLS
- COMPLETED BACKFILL ALONG HESTER
- CON. BACKFILL OF EAST & NORTH WALLS
- FORMED AND POURED GRADE BEAMS AT NW CRESCENT END
- STARTED STEEL ERECTION
- PLACED FRP DUCTWORK

MONTHLY PROGRESS REPORT

AS CONSTRUCTION CONTINUES, MANHATTAN WILL ISSUE MONTHLY PROGRESS REPORTS THROUGHOUT THE CONSTRUCTION PROCESS. TYPICALLY, THESE REPORTS ARE GENERATED AND TRANSMITTED ON THE LAST DAY OF EACH MONTH. THESE REPORTS ARE MEANT TO SERVE AS A TOOL FOR OSU LONG RANGE FACILITIES PLANNING TO DOCUMENT PRODUCTION AND KEEP INTERESTED PARTIES UPDATED WITH PROGRESS WHOM WOULD NOT OTHERWISE BE INVOLVED ON A DAILY BASIS.

PROGRESS REPORT: FEBRUARY HAS BEEN A VERY BUSY MONTH. WE HAVE SEEN THE BUILDING COMING OUT OF THE GROUND, WITH RED IRON ERECTING THE STEEL FOR THE 1ST AND 2ND FLOORS. WE'VE COMPLETED POURING THE FINAL SECTION OF BASEMENT WALLS, WHICH HAS ALLOWED WATERPROOFING AND BACKFILL OPERATIONS TO ADVANCE ALONG THE NORTH & EAST WALLS. INSTALLATION OF THE MOCKUP WALL HAS BEGUN, AND UNITED MECHANICAL HAS INSTALLED THE FRP DUCTWORK AT BOTH CRESCENT ENDS.

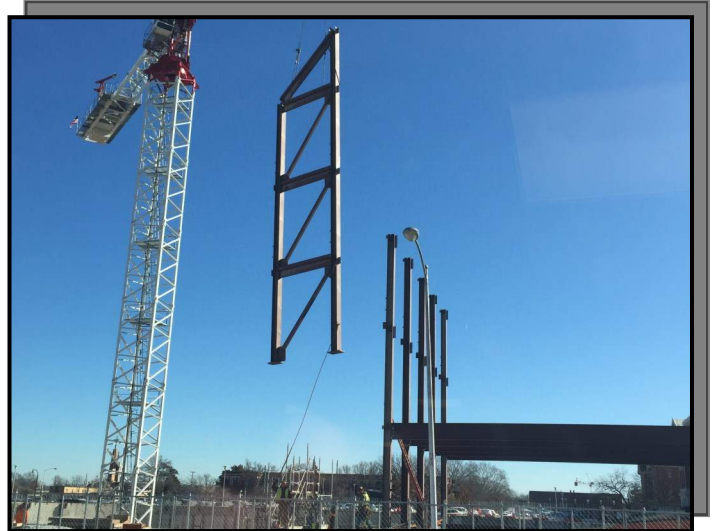
MANHATTAN IS PROUD TO PARTNER WITH OSU LONG RANGE FACILITIES PLANNING, SPEARS SCHOOL OF BUSINESS, AND ELLIOT AND ASSOCIATES ON THIS PROJECT.



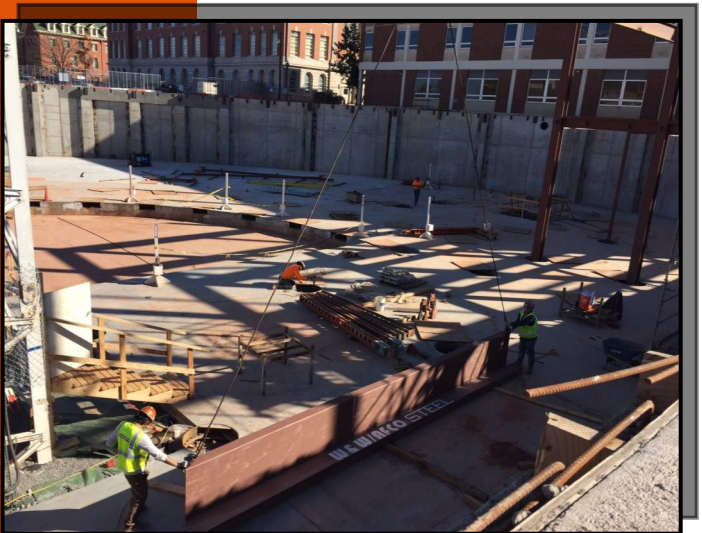
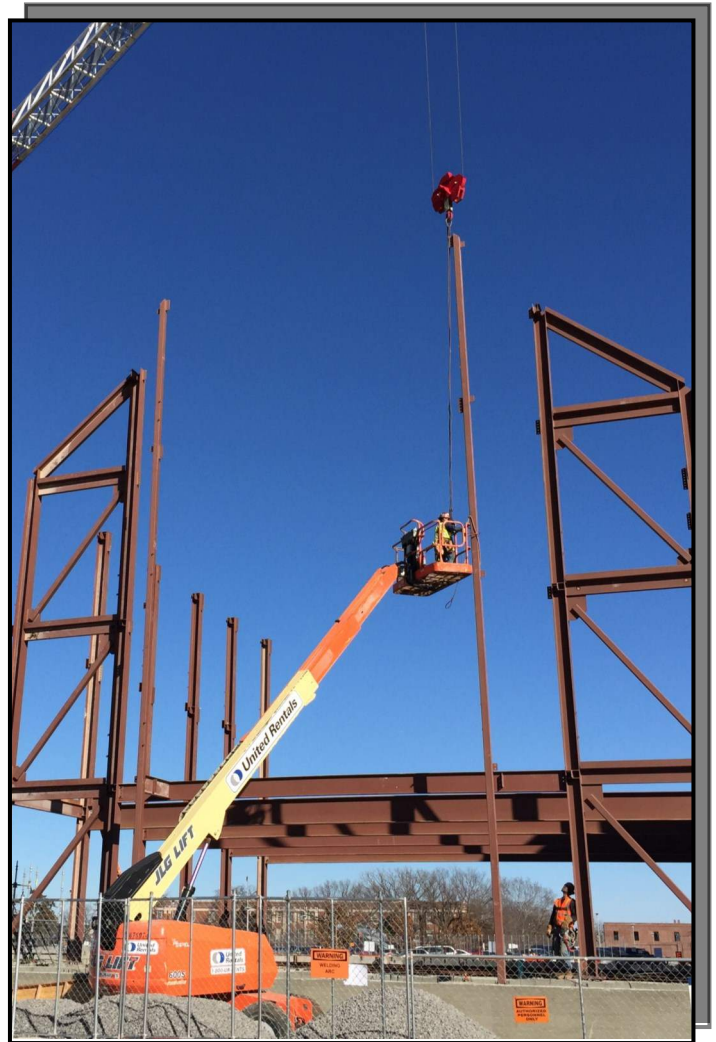
STEEL ERECTION



**PICTURED ABOVE:
STEEL BEING
DELIVERED**



**PICTURED RIGHT &
BELOW:
RED IRON ERECTING
STEEL**





STEEL ERECTION

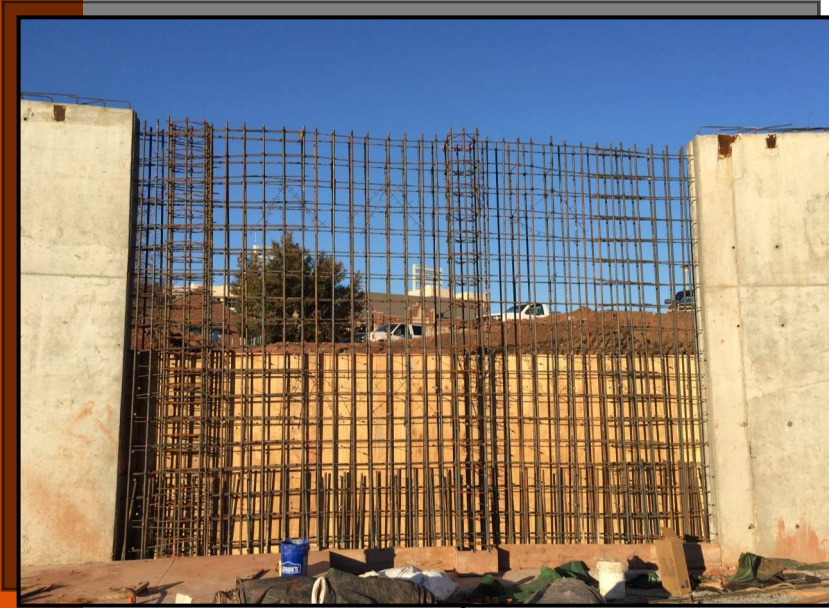


PICTURED:
STEEL ERECTION
CONTINUES





FINAL BASEMENT WALL



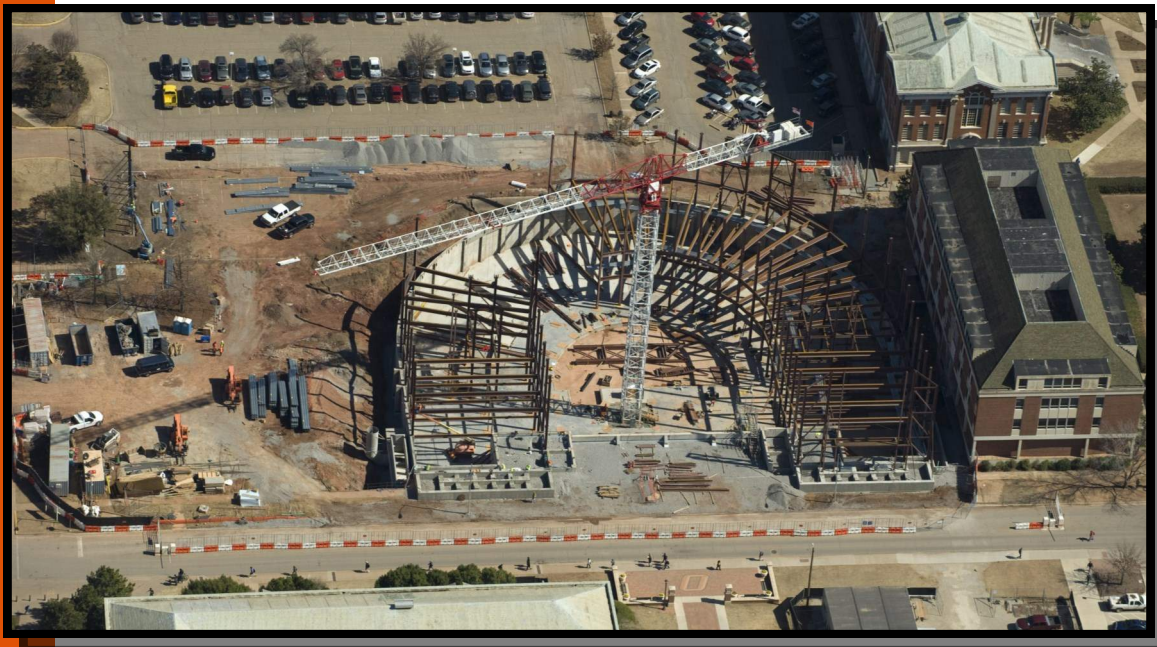
**PICTURED LEFT & BELOW:
FORMING AND POURING
NORTH WALL**



**PICTURED LEFT:
COMPLETED BASE-
MENT WALL**



AERIAL PHOTOS



FEBRUARY 2016



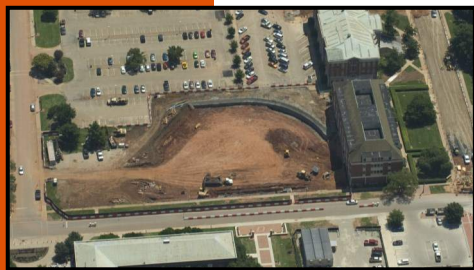
APRIL 2015



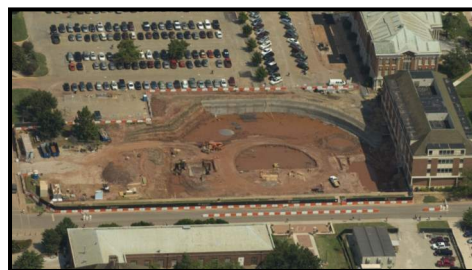
MAY 2015



JUNE 2015



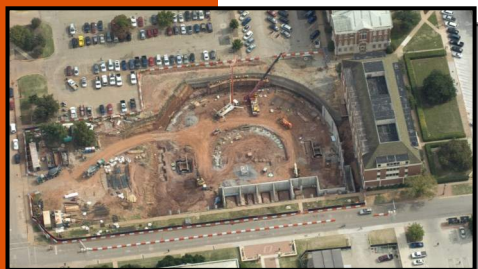
JULY 2015



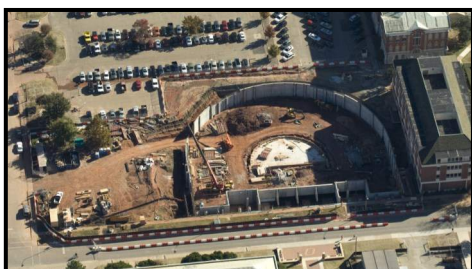
AUGUST 2015



SEPTEMBER 2015



OCTOBER 2015



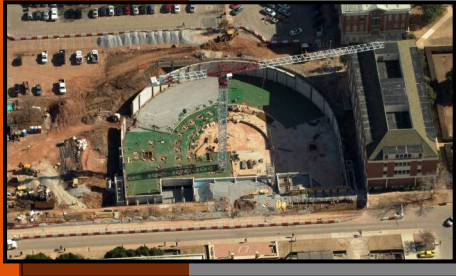
NOVEMBER 2015



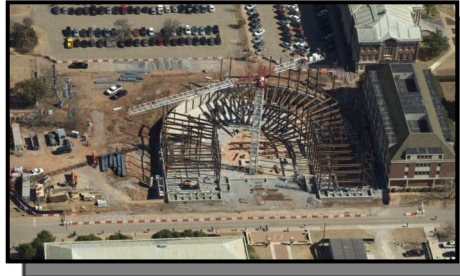
DECEMBER 2015



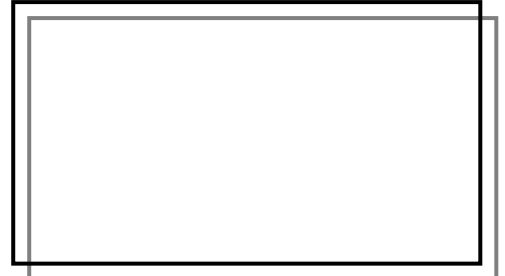
AERIAL PHOTOS



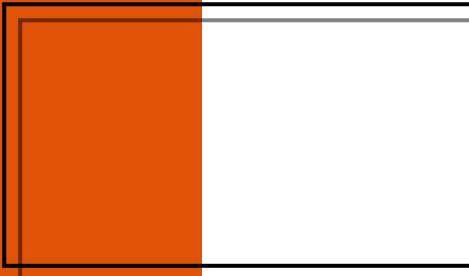
JANUARY 2016



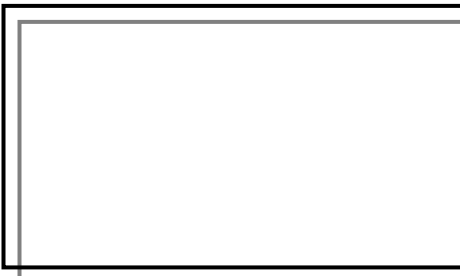
FEBRUARY 2016



MARCH 2016



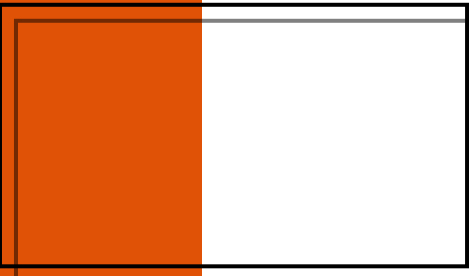
APRIL 2016



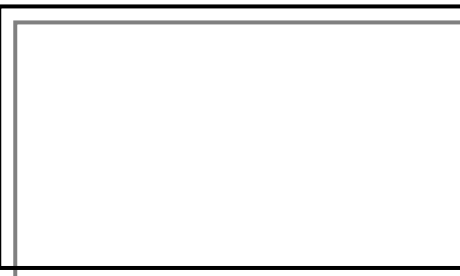
MAY 2016



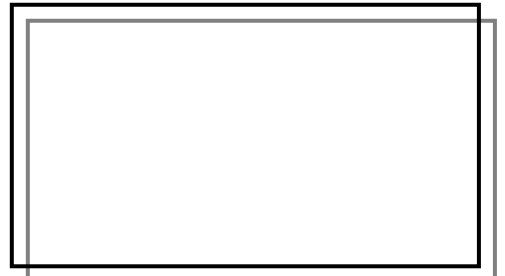
JUNE 2016



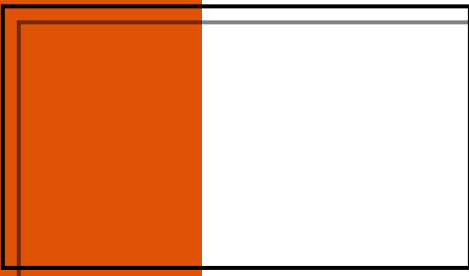
JULY 2016



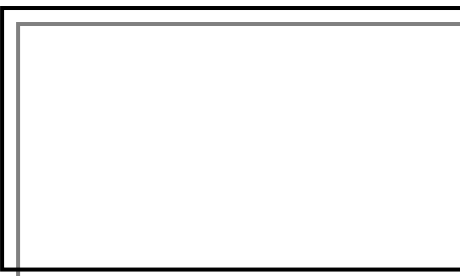
AUGUST 2016



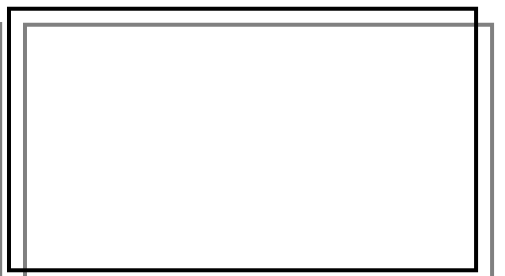
SEPTEMBER 2016



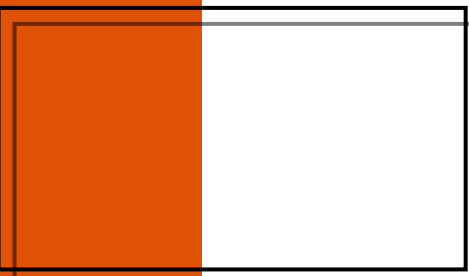
OCTOBER 2016



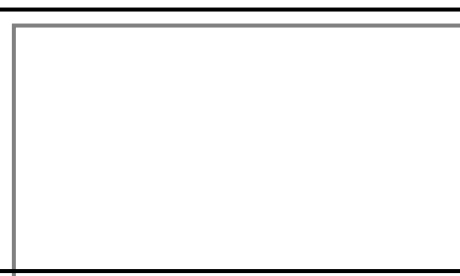
NOVEMBER 2016



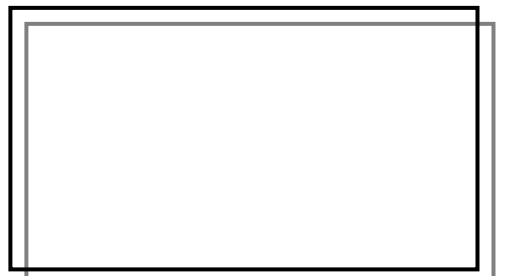
DECEMBER 2016



JANUARY 2017



FEBRUARY 2017



MARCH 2017



"The only thing better than recognizing a quality product is building one."

www.manhattanconstruction.com



UPCOMING ACTIVITIES FOR MARCH

- CONTINUE ERECTING STRUCTURAL STEEL
- PLACE SLEEVES FOR 1ST FLOOR PENETRATIONS
- START FORMWORK, REINFORCEMENT, AND POUR 1ST FLOOR SLAB ON METAL DECK
- START MASONRY WORK FOR MOCKUP

FOR A LIVE FEED OF THE PROJECT, VISIT:

[HTTP://SPEARS.OKSTATE.EDU/BUILDING/LIVE/](http://spears.okstate.edu/building/live/)

[HTTP://SPEARS.OKSTATE.EDU/BUILDING/](http://spears.okstate.edu/building/)



DETERMAN SCHEIRMAN, INC.
CONSULTING ENGINEERS

L R F P
Oklahoma State University,
Long Range Facilities Planning,



TM