



# OSU SPEARS SCHOOL OF BUSINESS BUILDING

OKLAHOMA STATE UNIVERSITY



## DECEMBER PROGRESS REPORT

12.31.2016



### MONTHLY OVERVIEW

- ◆ CONT. INTERIOR WALL FRAMING & WALL LAYOUT
- ◆ CONT. MEPPF INSTALL
- ◆ CONT. LAYING ROOF SHINGLES
- ◆ BEGAN INSTALLATION OF LOGGIA BALCONY HANDRAILS
- ◆ BEGAN GFRC INSTALLATION AT THE SW END CAP
- ◆ FINISHED DORMER INSTALLATION
- ◆ CONT. INSULATING AND ROCKING WALLS
- ◆ BEGAN INSTALLATION OF NORTH ELEVATOR
- ◆ CONT. CURTAINWALL INSTALL

## MONTHLY PROGRESS REPORT

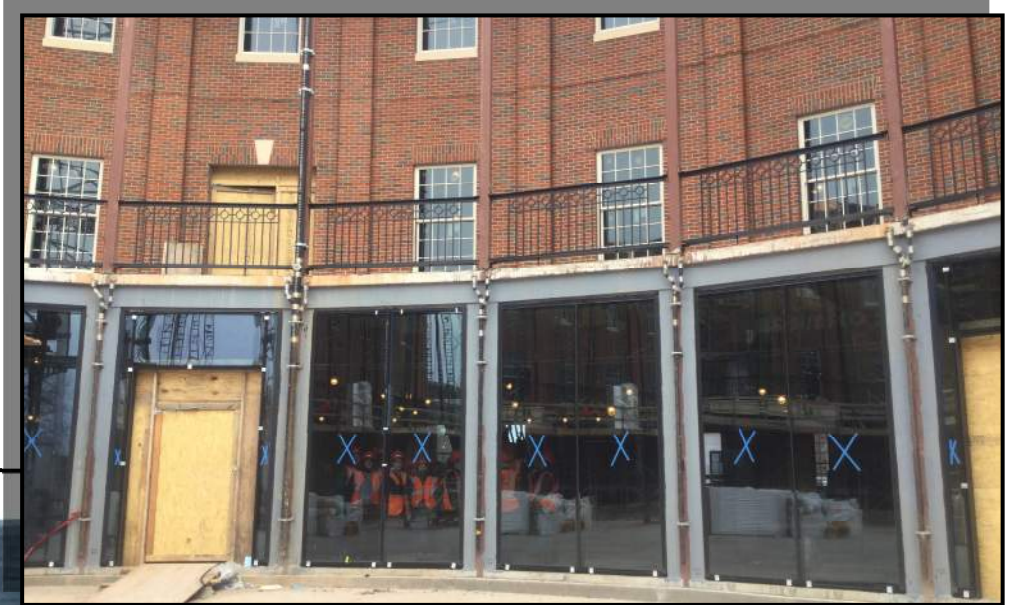
**PROGRESS REPORT:** THIS DECEMBER, THE EXTERIOR OF THE BUILDING IS PROGRESSING FURTHER WITH THE DORMERS ALL INSTALLED, MAJOR BRICK MASONRY COMPLETE, GFRC IN PROGRESS, AND THE BALCONY HANDRAILS BEING INSTALLED. THE ROOF SHINGLES ARE READY TO COMPLETE WITH ALL DORMERS ALREADY INSTALLED. THE CHIMNEY END CAP CURTAINWALL ARE COMPLETE WITH ONLY THE CRESCENT WINDOW LEFT TO INSTALL NEXT MONTH. MEPPF ROUGH-IN CONTINUES TO PROGRESS AS IT MOVES DOWN FLOORS WITH ALL VAV'S INSTALLED ON THE FIRST FLOOR. INTERIOR WALL LAYOUT AND FRAMING CONTINUES ON THE LOWER FLOORS WITH THE ANTICIPATION FOR THE FIRST FLOOR BEING COMPLETED NEXT MONTH. THE FOURTH FLOOR IS STILL RECEIVING GYP. AND IS MOVING RAPIDLY FROM SOUTH TO NORTH TOWARDS MUD AND PAINT.

AS CONSTRUCTION CONTINUES, MANHATTAN WILL ISSUE MONTHLY PROGRESS REPORTS THROUGHOUT THE CONSTRUCTION PROCESS. TYPICALLY, THESE REPORTS ARE GENERATED AND TRANSMITTED ON THE LAST DAY OF EACH MONTH. THESE REPORTS ARE MEANT TO SERVE AS A TOOL FOR OSU LONG RANGE FACILITIES PLANNING TO DOCUMENT PRODUCTION AND KEEP INTERESTED PARTIES UPDATED WITH PROGRESS WHOM WOULD NOT OTHERWISE BE INVOLVED ON A DAILY BASIS.

MANHATTAN IS PROUD TO PARTNER WITH OSU LONG RANGE FACILITIES PLANNING, SPEARS SCHOOL OF BUSINESS, AND ELLIOT AND ASSOCIATES ON THIS PROJECT.



## ROOFING INSTALLATION & BALCONY HANDRAIL



**PICTURED ABOVE:**

2ND FLOOR BALCONY  
HANDRAILS

**PICTURED LEFT:**

ROOF SHINGLE INSTALLATION

**PICTURED BELOW:**

2ND FLOOR BALCONY  
HANDRAILS





## BRICK MASONRY & GFRC



**PICTURED ABOVE:**

SOUTH INTERIOR RADIUS GFRC

**PICTURED RIGHT:**

NORTH VESTIBULE BRICK MASONRY

**PICTURED BELOW:**

NORTH INTERIOR RADIUS GFRC





## MEPF, AIR TOWERS, & ELEVATOR



**PICTURED ABOVE:**

NORTH AIR TOWERS

**PICTURED RIGHT:**

NORTH ELEVATOR INSTALLATION

**PICTURED BELOW:**

1ST FLOOR SOUTH DUCTWORK





## INTERIOR FRAMING & ROCK



**PICTURED ABOVE:**

3RD FLOOR FRAMING AND SHEETROCK

**PICTURED LEFT:**

4TH FLOOR SOUTH DORMER MUD & TAPED

**PICTURED LEFT:**

4TH FLOOR SOUTH FRAMING





## CURTAINWALL



**PICTURED ABOVE:**

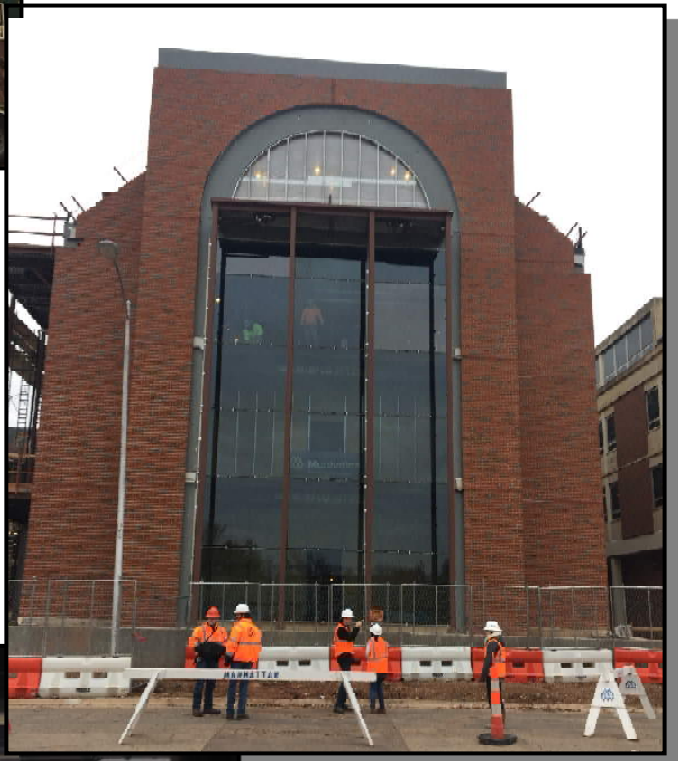
EAST CURTAINWALL INSTALLATION

**PICTURED RIGHT:**

SOUTH END CAP WEST CURTAINWALL  
INSTALLATION

**PICTURED BELOW:**

2ND FLOOR SOUTH END INSIDE  
CURTAINWALL





# AERIAL PHOTOS



## DECEMBER 2016



APRIL 2015



MAY 2015



JUNE 2015



JULY 2015



AUGUST 2015



SEPTEMBER 2015



OCTOBER 2015



NOVEMBER 2015



DECEMBER 2015



# AERIAL PHOTOS



JANUARY 2016



FEBRUARY 2016



MARCH 2016



APRIL 2016



MAY 2016



JUNE 2016



JULY 2016



AUGUST 2016



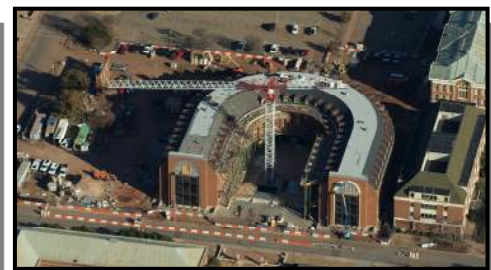
SEPTEMBER 2016



OCTOBER 2016



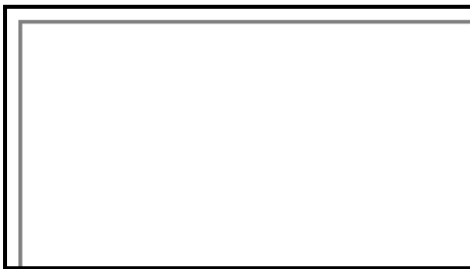
NOVEMBER 2016



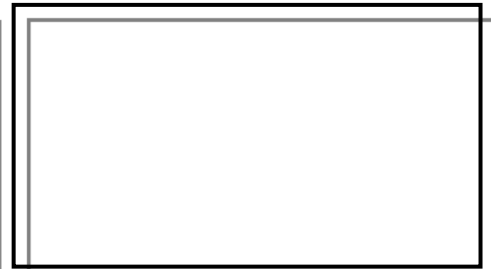
DECEMBER 2016



JANUARY 2017



FEBRUARY 2017



MARCH 2017





"The only thing better than recognizing a quality product is building one."

www.manhattanconstruction.com



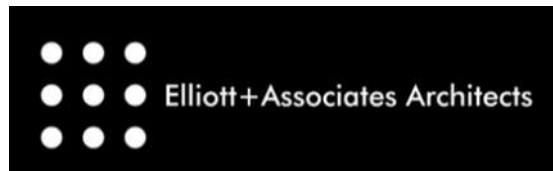
## UPCOMING ACTIVITIES FOR JANUARY

- CONT. MEPF INSTALL
- TURN ON PERMANENT POWER
- FINISH LAYING ROOF SHINGLES
- DISMANTLE CRANE
- CONTINUE GFRC INSTALLATION
- CONT. INSULATING AND ROCKING WALLS
- CONT. INSTALLATION OF NORTH ELEVATOR & BEGIN WORK ON SOUTH ELEVATOR
- BEGIN BASE COAT PAINTING ON 4TH FLOOR & LAY CEILING GRID
- CONT. CURTAINWALL INSTALLATION

FOR A LIVE FEED OF THE PROJECT, VISIT:

[HTTP://SPEARS.OKSTATE.EDU/BUILDING/LIVE/](http://spears.okstate.edu/building/live/)

[HTTP://SPEARS.OKSTATE.EDU/BUILDING/](http://spears.okstate.edu/building/)



**DETERMAN SCHEIRMAN, INC.**  
CONSULTING ENGINEERS



**L R F P**  
Oklahoma State University,  
Long Range Facilities Planning,



TM