



OSU SPEARS SCHOOL OF BUSINESS BUILDING

OKLAHOMA STATE UNIVERSITY



Manhattan

DECEMBER PROGRESS REPORT

12.31.2015



MONTHLY OVERVIEW

- POURED SOUTH HALF OF 81'-6" SLAB ON GRADE
- CONTINUED WATERPROOFING BASEMENT WALLS
- INSTALLED TEMPORARY POWER
- STARTED BACKFILL ALONG HESTER
- CONTINUED POURING FOUNDATION WALLS
- ERECTED TOWER CRANE

MONTHLY PROGRESS REPORT

AS CONSTRUCTION CONTINUES, MANHATTAN WILL ISSUE MONTHLY PROGRESS REPORTS THROUGHOUT THE CONSTRUCTION PROCESS. TYPICALLY, THESE REPORTS ARE GENERATED AND TRANSMITTED ON THE LAST DAY OF EACH MONTH. THESE REPORTS ARE MEANT TO SERVE AS A TOOL FOR OSU LONG RANGE FACILITIES PLANNING TO DOCUMENT PRODUCTION AND KEEP INTERESTED PARTIES UPDATED WITH PROGRESS WHOM WOULD NOT OTHERWISE BE INVOLVED ON A DAILY BASIS.

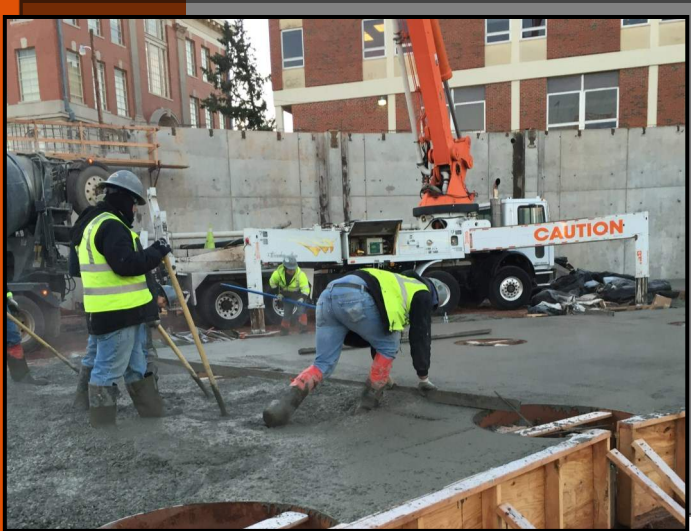
- **PROGRESS REPORT:** DURING THE MONTH OF DECEMBER WE CONTINUED WATERPROOFING THE BASEMENT WALLS AND HAVE BEGUN BACKFILL OPERATIONS ALONG THE WEST BASEMENT WALLS. THE UNDERGROUND PLUMBING AND DRAINAGE PIPING HAS BEEN COMPLETED AT THE SOUTH HALF OF THE BUILDING AND IS NEARING COMPLETION AT THE NORTH HALF. THIS HAS ALLOWED US TO POUR THE SOUTH HALF, 81'-6" SLAB ON GRADE. ALSO, OUR TOWER CRANE WAS ERECTED AND IS AWAITING STEEL ARRIVAL.

MANHATTAN IS PROUD TO PARTNER WITH OSU LONG RANGE FACILITIES PLANNING, SPEARS SCHOOL OF BUSINESS, AND ELLIOT AND ASSOCIATES ON THIS PROJECT.

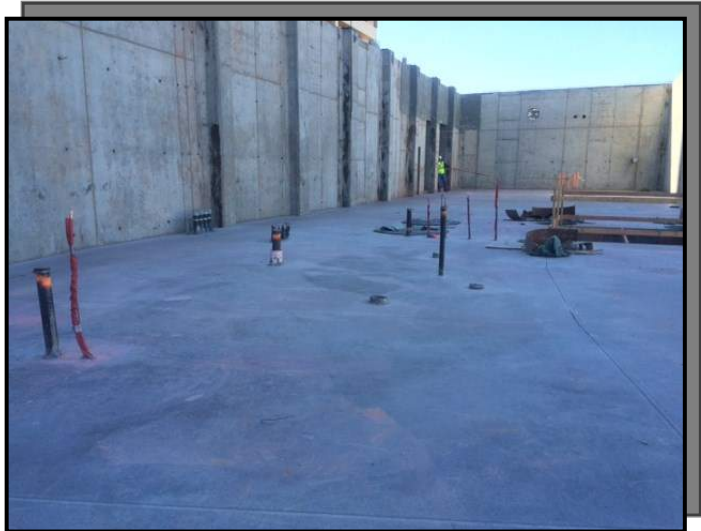
ISSUE NO.09



81'-6" BASEMENT SLAB ON GRADE



PICTURED: LITHKO FORMING & POURING 81'-6" SOG.

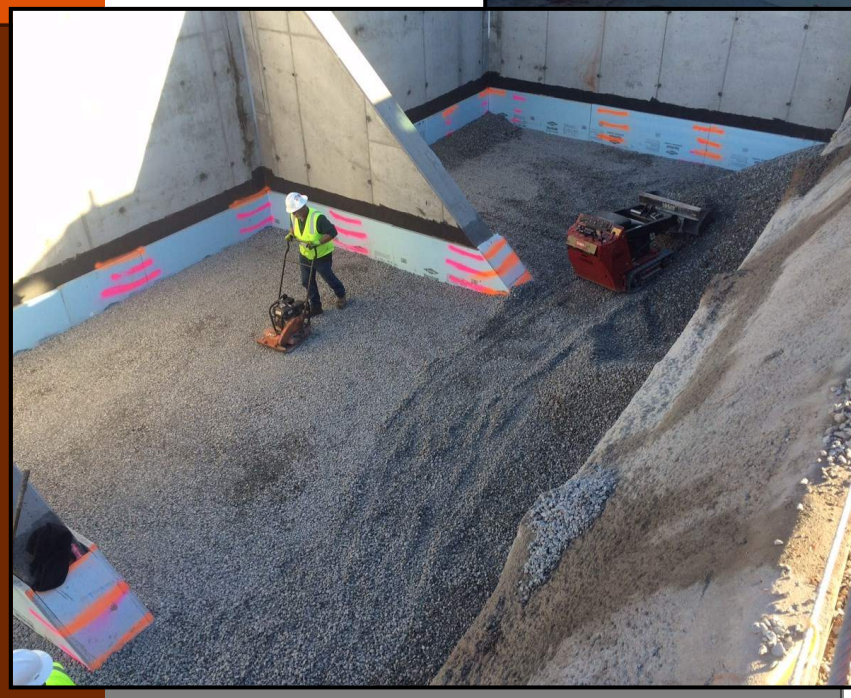




WATERPROOFING/BACKFILL



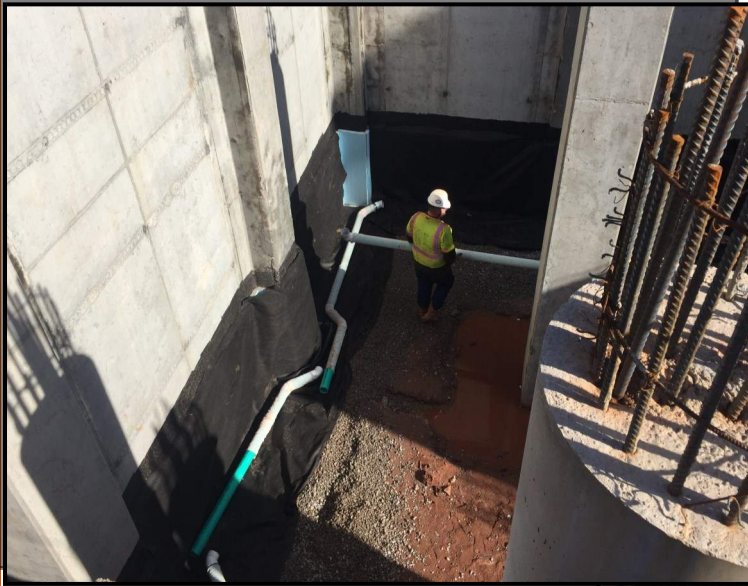
PICTURED LEFT:
INSTALLING WATERPROOF-
ING INSULATION BOARD



PICTURED:
COMPACTING BACK-
FILL ALONG HESTER



UNDERGROUND UTILITIES



PICTURED LEFT & BELOW:
UNDERGROUND
DRAINAGE SYSTEM

PICTURED BELOW:
UNDERGROUND PLUMB-
ING INSTALLATION





TOWER CRANE ERECTION



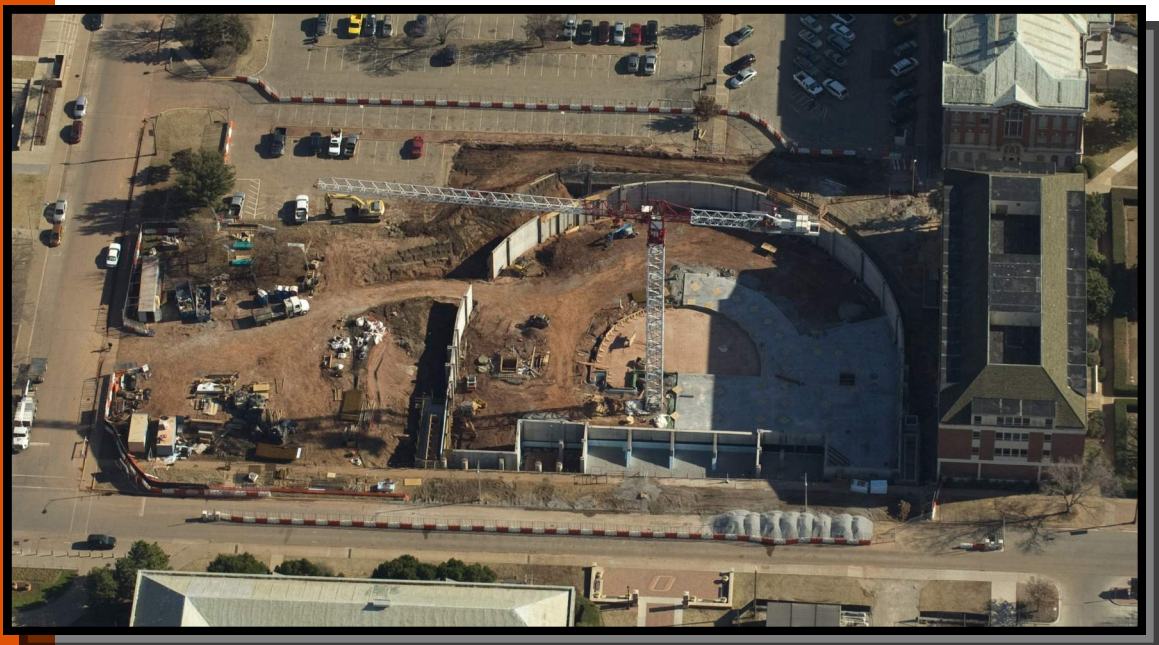
PICTURED LEFT: CRANE/
TEMP POWER INSTALLED

PICTURED RIGHT &
BELOW: TOWER
CRANE ERECTION





AERIAL PHOTO



DECEMBER 2015



APRIL 2015



MAY 2015



JUNE 2015



JULY 2015



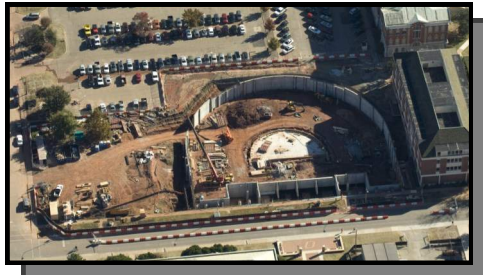
AUGUST 2015



SEPTEMBER 2015



OCTOBER 2015



NOVEMBER 2015



DECEMBER 2015



"The only thing better than recognizing a quality product is building one."

www.manhattanconstruction.com



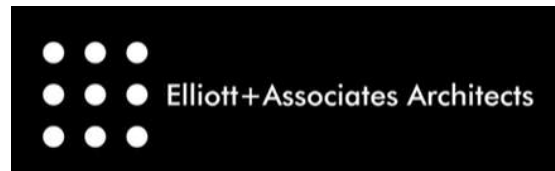
UPCOMING ACTIVITIES FOR JANUARY

- CONTINUE BACKFILL OPERATIONS ALONG HESTER
- CONTINUE INSTALLING UNDERGROUND PLUMBING PIPE IN BASEMENT
- INSTALL ELECTRICAL/TELECOM FLOOR BOXES IN BASEMENT FLOOR AT NORTH 81'-6" S.O.G.
- CONTINUE WATERPROOFING
- CONTINUE POURING SLAB ON GRADE IN BASEMENT

FOR A LIVE FEED OF THE PROJECT, VISIT:

[HTTP://SPEARS.OKSTATE.EDU/BUILDING/LIVE/](http://spears.okstate.edu/building/live/)

[HTTP://SPEARS.OKSTATE.EDU/BUILDING/](http://spears.okstate.edu/building/)



DETERMAN SCHEIRMAN, INC.
CONSULTING ENGINEERS



L R F P
Oklahoma State University,
Long Range Facilities Planning,



TM