



OSU SPEARS SCHOOL OF BUSINESS BUILDING

OKLAHOMA STATE UNIVERSITY



AUGUST PROGRESS REPORT

8.31.2017



MONTHLY OVERVIEW

- ◆ START INSTALLING CARPET TILES ON 4TH FLOOR
- ◆ INSTALLATION OF VANITIES AND SINKS
- ◆ INSTALL WOOD CEILINGS IN LeNORMAN CLASSROOM
- ◆ CONT. GFRC INSTALLATION
- ◆ STARTED WALL VINYL ON 2ND FLOOR
- ◆ CONT. INSTALL OF EXTERIOR DOORS
- ◆ POLISH TERRAZZO ON 2ND FLOOR
- ◆ CONT. EXTERIOR CONCRETE
- ◆ CONT. INSTALLATION OF FRAMING FOR ELEVATED DECKS

MONTHLY PROGRESS REPORT

PROGRESS REPORT: THIS AUGUST, THE EXTERIOR OF THE PROJECT SITE CONTINUES TO PROGRESS WITH SIDEWALKS, LIGHT POLE BASES BEING POURED ON THE NORTH AND EAST SIDES, AS WELL AS GRADING FOR THE NEW PARKING LOT ON THE EAST SIDE. WE HAVE INSTALLED THE GEO-FOAM AND GRAVEL ON THE PLAZA DECK IN PREPARATION FOR PAVERS. WE HAVE RECEIVED ALMOST ALL OF THE GFRC EXCEPT FOR A FEW REMAKES TO GET CLOSER TO COMPLETION OF THE GFRC. WE HAVE BEEN INSTALLING EXTERIOR DOORS AND FRAMES AT THE ENTRANCES THAT ARE STILL OPEN. TERRAZZO HAS BEEN POLISHED ON THE SECOND FLOOR AND IS STARTING TO BE POURED ON THE FIRST FLOOR. THE BASEMENT CLASSROOMS HAVE STARTED TO BE DECKED AS WELL AS THE LeNORMAN RISERS BEING CONSTRUCTED.

AS CONSTRUCTION CONTINUES, MANHATTAN WILL ISSUE MONTHLY PROGRESS REPORTS THROUGHOUT THE CONSTRUCTION PROCESS. TYPICALLY, THESE REPORTS ARE GENERATED AND TRANSMITTED ON THE LAST DAY OF EACH MONTH. THESE REPORTS ARE MEANT TO SERVE AS A TOOL FOR OSU LONG RANGE FACILITIES PLANNING TO DOCUMENT PRODUCTION AND KEEP INTERESTED PARTIES UPDATED WITH PROGRESS WHOM WOULD NOT OTHERWISE BE INVOLVED ON A DAILY BASIS.



CEILING



PICTURED ABOVE:

2ND FLOOR SAMPLE CLASSROOM



PICTURED LEFT:

3RD FLOOR K FIXTURES INSTALLED



PICTURED BOTTOM LEFT:

BASEMENT LEnORMAN CLASSROOM
WOOD SLAT CEILING



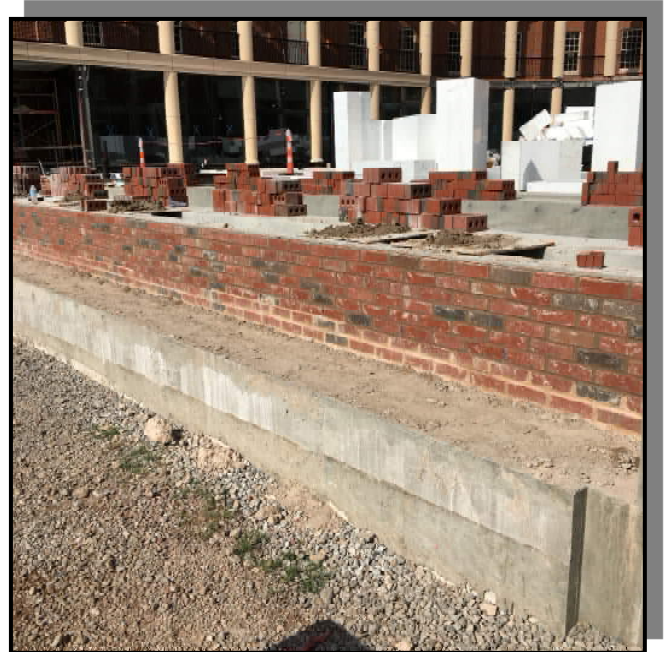
EXTERIOR IMPROVEMENTS



PICTURED ABOVE:
EXTERIOR NE SITE GRADING

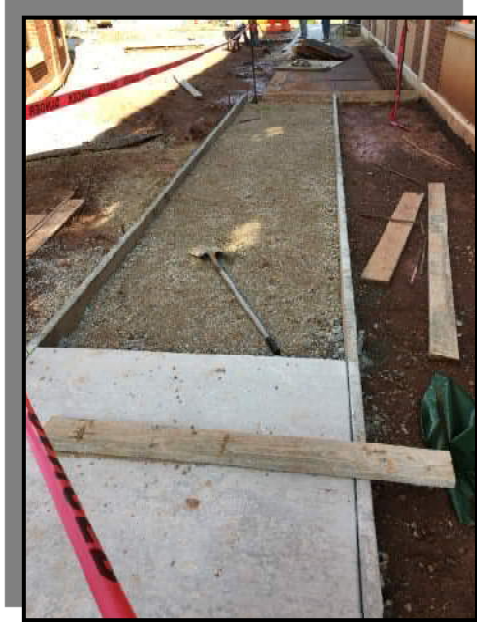
PICTURED RIGHT:
PLAZA PLANTER BED BRICK

PICTURED BELOW:
PLAZA FOAM AND DRAINAGE





EXTERIOR IMPROVEMENTS



PICTURED ABOVE:

SOUTH SIDE SIDEWALK FORMWORK

PICTURED RIGHT:

SOUTH SIDE SIDEWALK POURED

PICTURED BELOW:

EAST SIDE SITE GRADING





INTERIOR FRAMING, AND FINISHES



PICTURED ABOVE:

PAINTED BASEMENT COLUMN

PICTURED LEFT:

3RD FLOOR BATHROOM SINKS AND
FAUCETS

PICTURED BELOW LEFT:

SAMPLE CLASSROOM BACKLIT
COLUMN





FLOORING

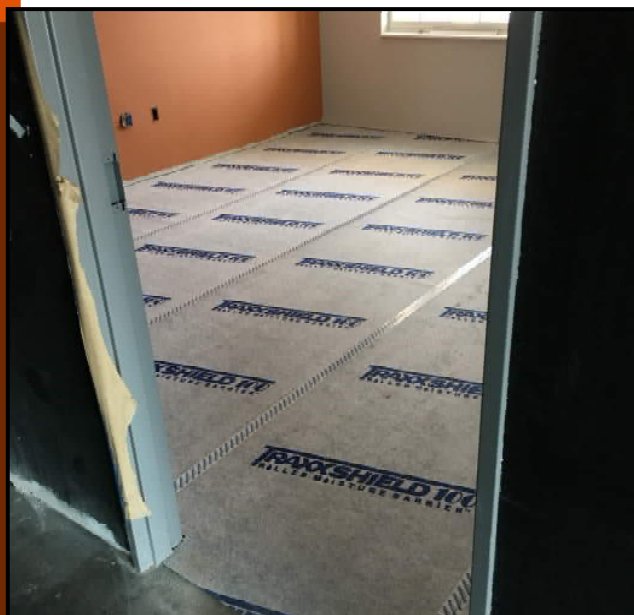


PICTURED ABOVE:
2ND FLOOR TERRAZZO POLISHED



PICTURED RIGHT:
4TH FLOOR INSTALLED CARPET

PICTURED BELOW:
3RD FLOOR CARPET MOISTURE
BARRIER





AERIAL PHOTOS



AUGUST 2017



APRIL 2015



MAY 2015



JUNE 2015



JULY 2015



AUGUST 2015



SEPTEMBER 2015



OCTOBER 2015



NOVEMBER 2015



DECEMBER 2015



AERIAL PHOTOS



JANUARY 2016



FEBRUARY 2016



MARCH 2016



APRIL 2016



MAY 2016



JUNE 2016



JULY 2016



AUGUST 2016



SEPTEMBER 2016



OCTOBER 2016



NOVEMBER 2016



DECEMBER 2016



JANUARY 2017



FEBRUARY 2017



MARCH 2017



AERIAL PHOTOS



APRIL 2017



MAY 2017



JUNE 2017



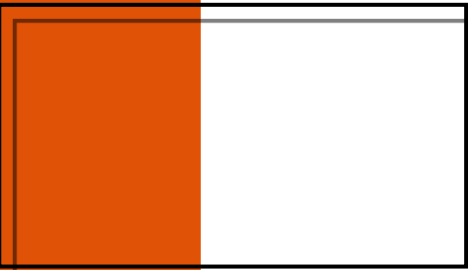
JULY 2017



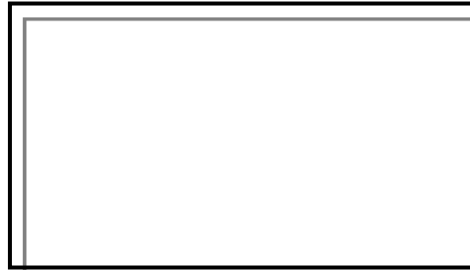
AUGUST 2017



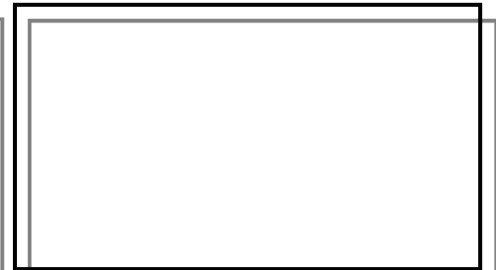
SEPTEMBER 2017



OCTOBER 2017



NOVEMBER 2017



DECEMBER 2017



JANUARY 2018



"The only thing better than recognizing a quality product is building one."

www.manhattanconstruction.com



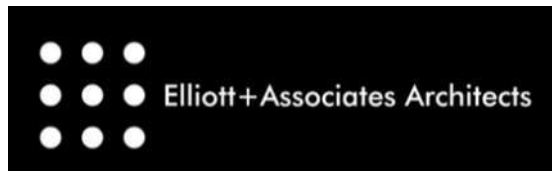
UPCOMING ACTIVITIES FOR SEPTEMBER

- ◆ CONT. CARPET AND LVT INSTALL ON 2ND FLOOR
- ◆ START WALL VINYL IN BASEMENT
- ◆ BEGIN PLAZA PAVERS
- ◆ CONT. GFRC INSTALLATION
- ◆ START DROPPING CEILING TILES IN THE BASEMENT
- ◆ CONT. POURING TERRAZZO ON FIRST FLOOR
- ◆ CONT. EXTERIOR CONCRETE
- ◆ CONT. EXTERIOR CIVIL GRADING

FOR A LIVE FEED OF THE PROJECT, VISIT:

[HTTP://SPEARS.OKSTATE.EDU/BUILDING/LIVE/](http://spears.okstate.edu/building/live/)

[HTTP://SPEARS.OKSTATE.EDU/BUILDING/](http://spears.okstate.edu/building/)



DETERMAN SCHEIRMAN, INC.
CONSULTING ENGINEERS



L R F P

Oklahoma State University,
Long Range Facilities Planning,



TM