



OSU SPEARS SCHOOL OF BUSINESS BUILDING

OKLAHOMA STATE UNIVERSITY



AUGUST PROGRESS REPORT

8.31.2016



MONTHLY OVERVIEW

- ◆ CONT. INTERIOR WALL FRAMING
- ◆ CONT. BASEMENT DUCTWORK/PLUMBING
- ◆ CONT. WEATHER BARRIER
- ◆ CONT. INSTALLING BRICK MASONRY
- ◆ CONT. ROUGH IN AND INSTALL OF DORMERS
- ◆ CONT. ROOF DECKING AND DETAIL
- ◆ CONT. WALL LAYOUT
- ◆ STARTED BASEMENT FIRE PROTECTION AND RISER INSTALL
- ◆ CONT. 4TH FLOOR MEP INSTALL

MONTHLY PROGRESS REPORT

PROGRESS REPORT: THIS AUGUST, WEATHER BARRIER CONTINUES ON THE INTERIOR RADIUS OF THE BUILDING. SHEATHING AND WEATHER BARRIER ARE NEARING COMPLETION ON THE EXTERIOR RADIUS. INTERIOR WALL LAYOUT HAS BEGUN AND FRAMING HAS FOLLOWED QUICKLY BEHIND BEGINNING ON THE 4TH FLOOR AND BASEMENT. BRICK MASONRY IS CONTINUING AROUND THE BUILDING, FINISHING OFF THE EXTERIOR SOUTH SIDE AND MAKING HEAD WAY AS SCAFFOLDS RISE ON THE SOUTH INTERIOR SIDE UP TO THE 3RD FLOOR TO FINISH MASONRY THERE. ROOF DECKING JUST COMPLETED AT THE END OF THE MONTH. DORMER INSTALL CONTINUES ON SOUTH SIDE. MEP BASEMENT ROUGH-IN IS UNDERWAY AND CONTINUING ON TO THE FOURTH FLOOR AND DOWNWARD.

AS CONSTRUCTION CONTINUES, MANHATTAN WILL ISSUE MONTHLY PROGRESS REPORTS THROUGHOUT THE CONSTRUCTION PROCESS. TYPICALLY, THESE REPORTS ARE GENERATED AND TRANSMITTED ON THE LAST DAY OF EACH MONTH. THESE REPORTS ARE MEANT TO SERVE AS A TOOL FOR OSU LONG RANGE FACILITIES PLANNING TO DOCUMENT PRODUCTION AND KEEP INTERESTED PARTIES UPDATED WITH PROGRESS WHOM WOULD NOT OTHERWISE BE INVOLVED ON A DAILY BASIS.

MANHATTAN IS PROUD TO PARTNER WITH OSU LONG RANGE FACILITIES PLANNING, SPEARS SCHOOL OF BUSINESS, AND ELLIOT AND ASSOCIATES ON THIS PROJECT.



DORMER INSTALL & WEATHERPROOFING



PICTURED ABOVE:

INSTALLATION OF DORMER

PICTURED LEFT & BELOW:

WEATHER BARRIER OF THE
SOUTH CHIMNEY AND SOUTH
SIDE INTERIOR RADIUS



BRICK MASONRY



PICTURED ABOVE:

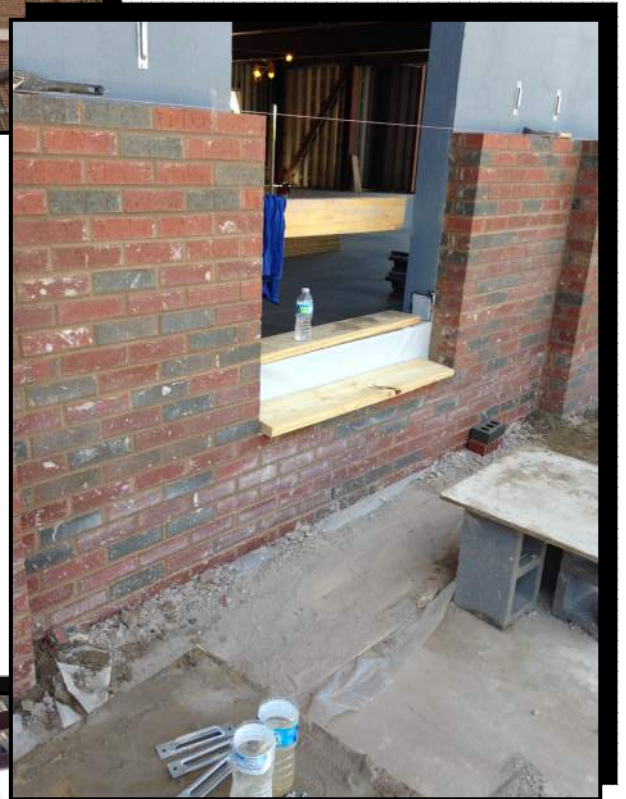
SOUTHEAST EXTERIOR BRICK MASONRY

PICTURED RIGHT:

2ND FLOOR SOUTH LOGGIA BALCONY
BRICK MASONRY

PICTURED BELOW:

SOUTH 1ST FLOOR VESTIBULE
BRICK MASONRY





CMU MECHANICAL WALL & DECKING



PICTURED ABOVE:
SOUTH DECKING DORMER
ROUGH IN

**PICTURED RIGHT AND
BELOW:**
NORTH BASEMENT CMU
MECHANICAL ROOM





INTERIOR FRAMING

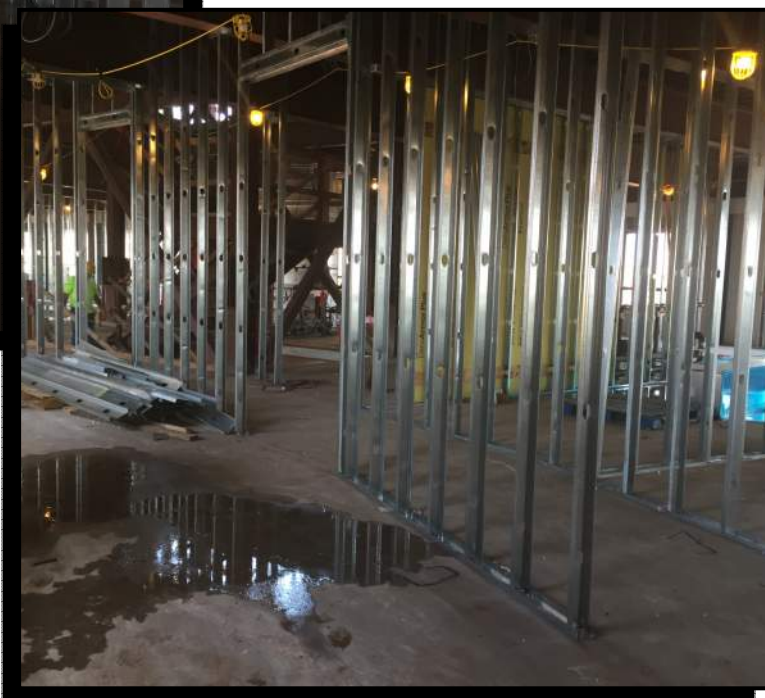


PICTURED ABOVE:

4TH FLOOR SOUTH FRAMING OF-
FICE LAYOUT

PICTURED LEFT & BELOW:

3RD FLOOR FRAMING
INSTALLATION





BASEMENT MEP INSTALLATION



PICTURED ABOVE:
BASEMENT FIRE LINE

**PICTURED RIGHT AND
BELOW:**

DUCTWORK INSTALLATION IN
THE BASEMENT





AERIAL PHOTO



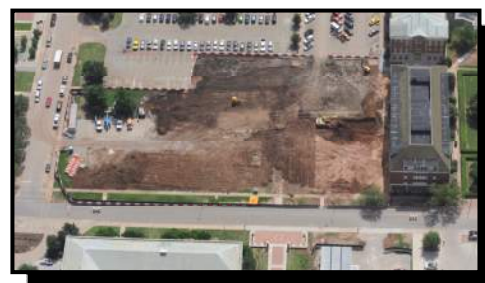
AUGUST 2016



APRIL 2015



MAY 2015



JUNE 2015



JULY 2015



AUGUST 2015



SEPTEMBER 2015



OCTOBER 2015



NOVEMBER 2015



DECEMBER 2015



AERIAL PHOTO



JANUARY 2016



FEBRUARY 2016



MARCH 2016



APRIL 2016



MAY 2016



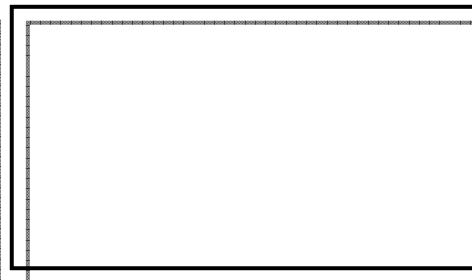
JUNE 2016



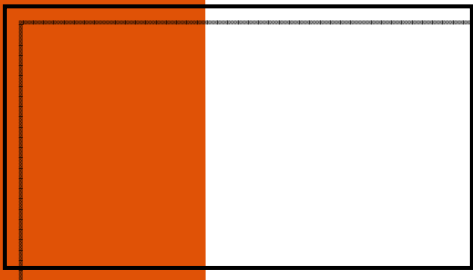
JULY 2016



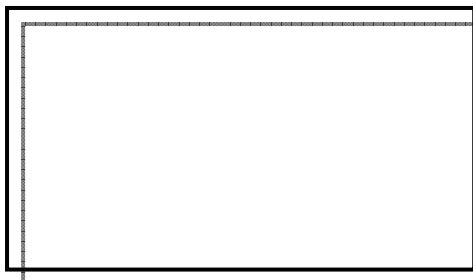
AUGUST 2016



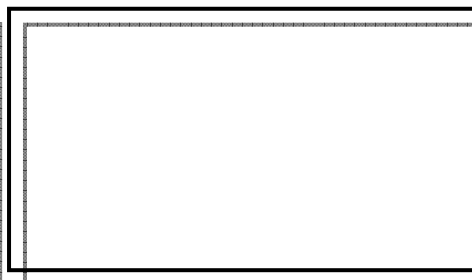
SEPTEMBER 2016



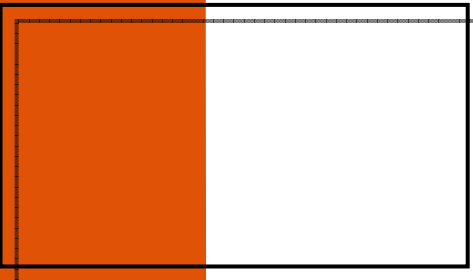
OCTOBER 2016



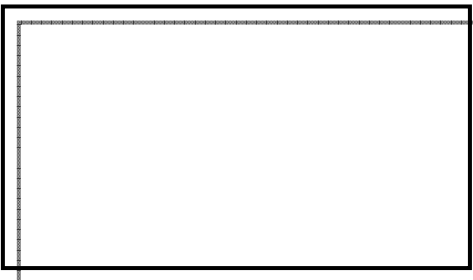
NOVEMBER 2016



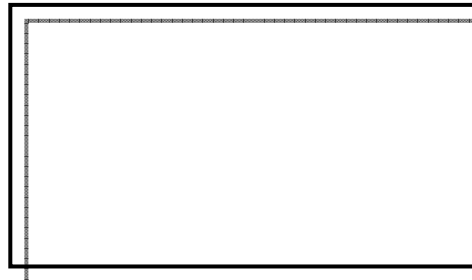
DECEMBER 2016



JANUARY 2017



FEBRUARY 2017



MARCH 2017



"The only thing better than recognizing a quality product is building one."

www.manhattanconstruction.com



UPCOMING ACTIVITIES FOR SEPTEMBER

- CONT. BASEMENT, 4TH FLOOR & 3RD FLOOR MEP
- COMPLETE EXTERIOR WALL FRAMING
- START LAYING ROOF SHINGLES
- COMPLETE WEATHER BARRIER ON EXTERIOR WALLS ON INTERIOR AND EXTERIOR RADIUS
- CONT. BRICK MASONRY
- CONT. DORMER INSTALLATION
- BEGIN INSTALLATION OF WINDOWS
- CONT. LAYING OUT BASEMENT, 2ND, 3RD, AND 4TH FLOOR WALLS

FOR A LIVE FEED OF THE PROJECT, VISIT:

[HTTP://SPEARS.OKSTATE.EDU/BUILDING/LIVE/](http://spears.okstate.edu/building/live/)

[HTTP://SPEARS.OKSTATE.EDU/BUILDING/](http://spears.okstate.edu/building/)



DETERMAN SCHEIRMAN, INC.
CONSULTING ENGINEERS



L R F P
Oklahoma State University,
Long Range Facilities Planning,



TM