



# OSU SPEARS SCHOOL OF BUSINESS BUILDING

OKLAHOMA STATE UNIVERSITY



## AUGUST PROGRESS REPORT

8.31.2015



### MONTHLY OVERVIEW

- COMPLETED INSTALLATION OF THE RETENTION SYSTEM
- COMPLETED EXCAVATION
- BID PACKAGE III IS OUT FOR BID
- INSTALLATION OF ELECTRICAL VAULT
- STARTED DRILLING AND POURING PIERS
- COMPLETED MORRILL AVE. PAINT STRIPING
- STARTED FORMING GRADE BEAMS AND FOUNDATIONS

## MONTHLY PROGRESS REPORT

AS CONSTRUCTION CONTINUES, MANHATTAN WILL ISSUE MONTHLY PROGRESS REPORTS THROUGHOUT THE CONSTRUCTION PROCESS. TYPICALLY, THESE REPORTS ARE GENERATED AND TRANSMITTED ON THE LAST DAY OF EACH MONTH. THESE REPORTS ARE MEANT TO SERVE AS A TOOL FOR OSU LONG RANGE FACILITIES PLANNING TO DOCUMENT PRODUCTION AND KEEP INTERESTED PARTIES UPDATED WITH PROGRESS WHOM WOULD NOT OTHERWISE BE INVOLVED ON A DAILY BASIS.

**PROGRESS REPORT:** DURING THE MONTH OF AUGUST THE EXCAVATION FOR THE NEW BUILDING & THE STREET STRIPING OF MORRILL AVE WAS COMPLETED. THE DRILLING AND POURING OF PIERS HAS BEGUN. WE ALSO Poured the SUMP PIT & FLOOR OF THE NORTH ELEVATOR PIT, AS WELL AS STARTED THE FORMING OF FOOTINGS & GRADE BEAMS. THE ELECTRICAL VAULTS NORTH OF MORRILL HALL HAVE ALSO BEEN INSTALLED.

MANHATTAN IS PROUD TO PARTNER WITH OSU LONG RANGE FACILITIES PLANNING, SPEARS SCHOOL OF BUSINESS, AND ELLIOT AND ASSOCIATES ON THIS PROJECT.

ISSUE NO.05



# PIER INSTALLATION



PICTURED: LITHKO INSTALLING DRILLED PIERS





# PIERS & FOOTINGS



**PICTURED ABOVE AND RIGHT:** EXCAVATED GRADE BEAMS AROUND STAIRS AT NORTH HALF OF BUILDING





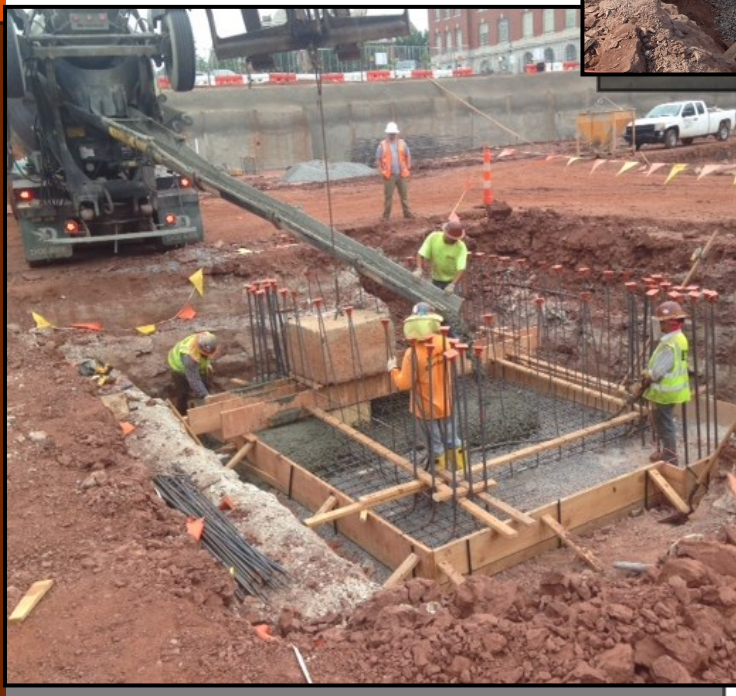
# ELEVATOR FOOTINGS



**PICTURED ABOVE:** EXCAVATION OF ELEVATOR PIT



**PICTURED RIGHT:** FORMING ELEVATOR PIT



**PICTURED LEFT:** POURING ELEVATOR PIT



# VAULT INSTALLATION



PICTURED: INSTALLATION OF ELECTRICAL VAULT NORTH OF MORRILL HALL

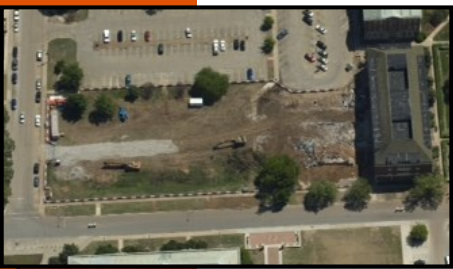




# AERIAL PHOTO



## AUGUST 2015



APRIL 2015



MAY 2015



JUNE 2015



JULY 2015



AUGUST 2015



SEPTEMBER 2015



"The only thing better than recognizing a quality product is building one."

www.manhattanconstruction.com



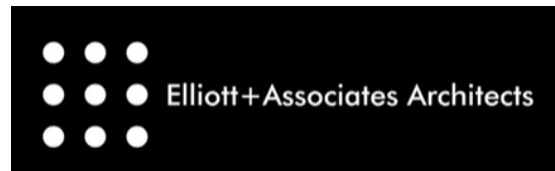
## UPCOMING ACTIVITIES

- FINISH DRILLING & POURING PIERS IN THE BASEMENT
- CONTINUE POURING FOOTINGS & GRADE BEAMS
- START & FINISH THE SOUTH ELEVATOR PIT & SUMP PIT
- INSTALL MEP WALL SLEEVES PRIOR TO WALL POURS
- START POURING FOUNDATION WALLS

FOR A LIVE FEED OF THE PROJECT, VISIT:

[HTTP://SPEARS.OKSTATE.EDU/BUILDING/LIVE/](http://spears.okstate.edu/building/live/)

[HTTP://SPEARS.OKSTATE.EDU/BUILDING/LIVE2/](http://spears.okstate.edu/building/live2/)



**DETERMAN SCHEIRMAN, INC.**  
CONSULTING ENGINEERS



**L R F P**

Oklahoma State University,  
Long Range Facilities Planning,



TM