



OSU SPEARS SCHOOL OF BUSINESS BUILDING

OKLAHOMA STATE UNIVERSITY



APRIL PROGRESS REPORT

4.28.2017



MONTHLY OVERVIEW

- ◆ CONT. INSULATING AND ROCKING WALLS
- ◆ CONT. MEPF INSTALL
- ◆ CONT. CURTAIN WALL INSTALL
- ◆ CONT. GFRC INSTALLATION

- ◆ CONT. 1ST COAT WALLS ON 2ND AND 3RD FLOOR
- ◆ CONT. INSTALL OF CRESCENT WINDOW
- ◆ CONT. TERRAZZO ON 3RD AND 4TH FLOOR
- ◆ CONT. EXTERIOR CONCRETE
- ◆ CONT. SITE GRADING

MONTHLY PROGRESS REPORT

PROGRESS REPORT: THIS APRIL, THE EXTERIOR OF THE PROJECT SITE CONTINUES TO CHANGE WITH THE SITE CONCRETE PLANTER BEDS BEING FORMED AND POURED ON THE WEST SIDE OF THE SITE, AND THE SITE GRADING CONTINUING ON THE NORTH SIDE. GFRC CONTINUES TO BE INSTALLED ON THE EXTERIOR. THE INTERIOR OF THE PROJECT MOVES ALONG WITH FINISHES CONTINUING ON THE 2ND, 3RD, AND 4TH FLOOR. TERRAZZO CONTINUES TO ON THE 4TH FLOOR AND MOVING DOWN TO THE 2ND FLOOR, WHILE ON THE 1ST FLOOR AND THE BASEMENT, FRAMING, DRYWALL, AND MUD AND TAPING CONTINUES TO PROGRESS.

AS CONSTRUCTION CONTINUES, MANHATTAN WILL ISSUE MONTHLY PROGRESS REPORTS THROUGHOUT THE CONSTRUCTION PROCESS. TYPICALLY, THESE REPORTS ARE GENERATED AND TRANSMITTED ON THE LAST DAY OF EACH MONTH. THESE REPORTS ARE MEANT TO SERVE AS A TOOL FOR OSU LONG RANGE FACILITIES PLANNING TO DOCUMENT PRODUCTION AND KEEP INTERESTED PARTIES UPDATED WITH PROGRESS WHOM WOULD NOT OTHERWISE BE INVOLVED ON A DAILY BASIS.

MANHATTAN IS PROUD TO PARTNER WITH OSU LONG RANGE FACILITIES PLANNING, SPEARS SCHOOL OF BUSINESS, AND ELLIOT AND ASSOCIATES ON THIS PROJECT.



CEILING



PICTURED ABOVE:

3RD FLOOR CORRIDOR CEILING
GRID

PICTURED LEFT:

3RD FLOOR PHD CLASSROOM CEILING
GRID

PICTURED BELOW:

4TH FLOOR CRYSTAL ROOM





GFRC INSTALLATION



PICTURED ABOVE:

NORTH EXTERIOR CHIMNEY GFRC

PICTURED RIGHT:

SOUTH EXTERIOR CHIMNEY GFRC

PICTURED BELOW:

INTERIOR GFRC COLUMN COVER





EXTERIOR IMPROVEMENTS



PICTURED ABOVE:

FORM AND POUR OF THE PLAZA STAGE

PICTURED RIGHT:

CONT. OF EIFS ON EXISTING BUILDING

PICTURED BELOW:

START OF PLANTER BED CONCRETE





INTERIOR FRAMING, AND FINISHES



PICTURED ABOVE:

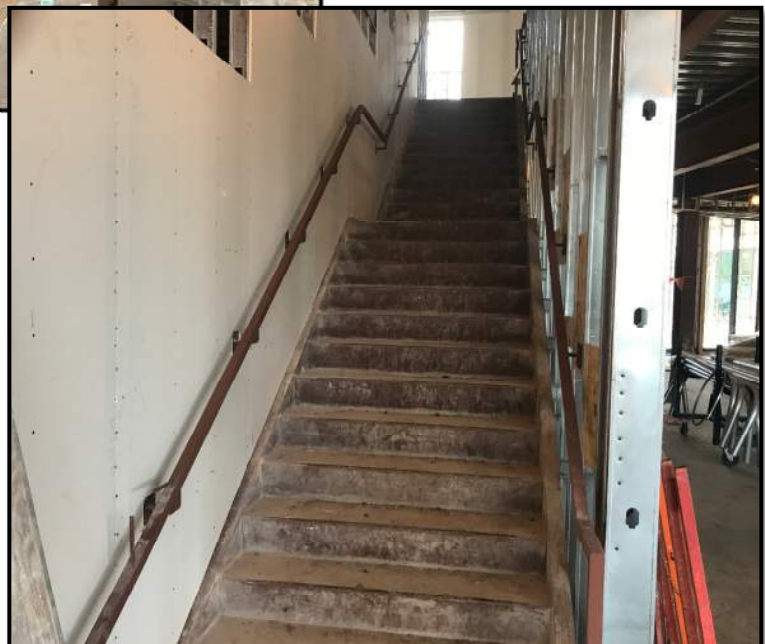
1ST FLOOR RADIUS WALL FRAMING

PICTURED LEFT:

SAMPLE CLASSROOM PROJECTION
SCREEN INSTALLATION

PICTURED BELOW:

1ST FLOOR CENTER STAIR FRAMING
AND HAND RAIL INSTALL





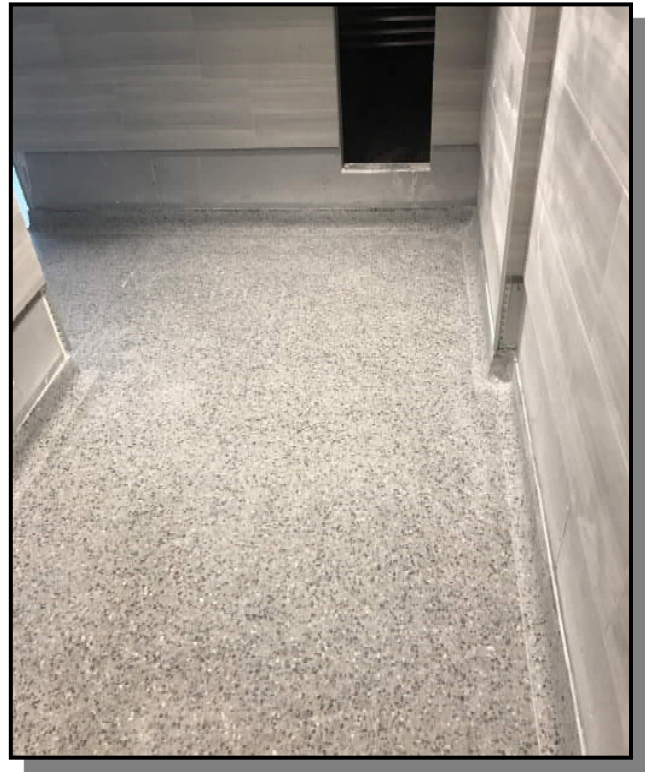
TERRAZZO



PICTURED ABOVE:
4TH FLOOR SOUTH LOUNGE 422

PICTURED RIGHT:
4TH FLOOR NORTH BATHROOMS

PICTURED BELOW:
4TH FLOOR LOBBY 400.04





AERIAL PHOTOS



APRIL 2017



APRIL 2015



MAY 2015



JUNE 2015



JULY 2015



AUGUST 2015



SEPTEMBER 2015



OCTOBER 2015



NOVEMBER 2015



DECEMBER 2015



AERIAL PHOTOS



JANUARY 2016



FEBRUARY 2016



MARCH 2016



APRIL 2016



MAY 2016



JUNE 2016



JULY 2016



AUGUST 2016



SEPTEMBER 2016



OCTOBER 2016



NOVEMBER 2016



DECEMBER 2016



JANUARY 2017



FEBRUARY 2017



MARCH 2017



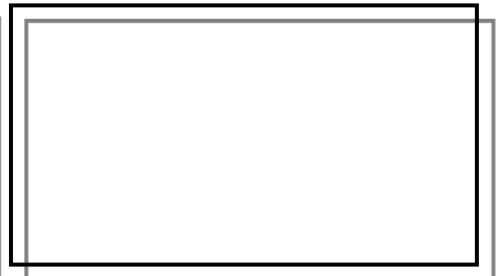
AERIAL PHOTOS



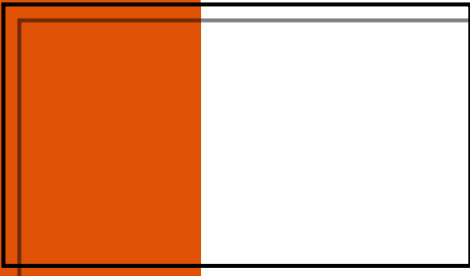
APRIL 2017



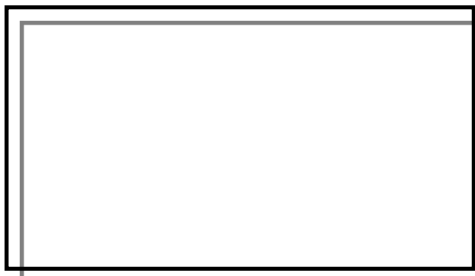
MAY 2017



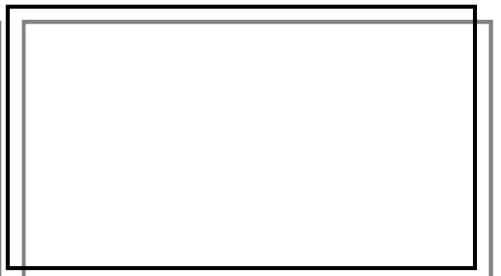
JUNE 2017



JULY 2017



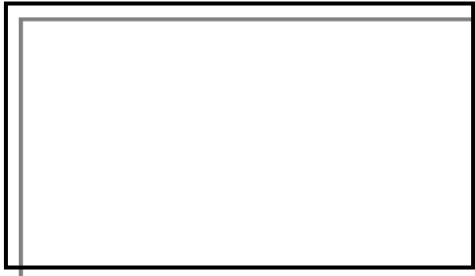
AUGUST 2017



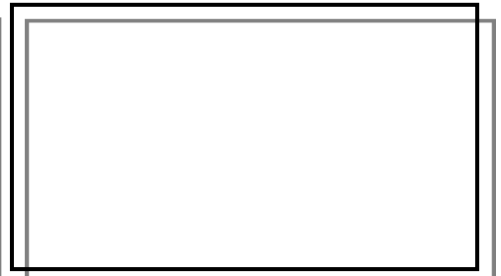
SEPTEMBER 2017



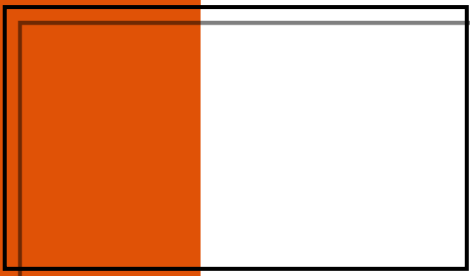
OCTOBER 2017



NOVEMBER 2017



DECEMBER 2017



JANUARY 2018



"The only thing better than recognizing a quality product is building one."

www.manhattanconstruction.com



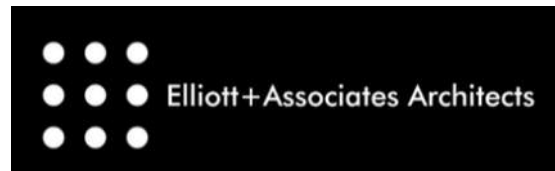
UPCOMING ACTIVITIES FOR MARCH

- CONT. MEPF INSTALL
- CONT. GFRC INSTALLATION
- CONT. INSULATING AND ROCKING WALLS
- CONT. LAYING CEILING GRID
- CONT. PRIME AND 1ST COAT PAINTING OF WALLS
- CONT. SITE CONCRETE
- CONT. SITEWORK
- CONT. TERRAZZO
- CONT. INTERIOR FINISHES

FOR A LIVE FEED OF THE PROJECT, VISIT:

[HTTP://SPEARS.OKSTATE.EDU/BUILDING/LIVE/](http://spears.okstate.edu/building/live/)

[HTTP://SPEARS.OKSTATE.EDU/BUILDING/](http://spears.okstate.edu/building/)



DETERMAN SCHEIRMAN, INC.
CONSULTING ENGINEERS



L R F P

Oklahoma State University,
Long Range Facilities Planning,



TM